

Product datasheet for RC208718

FANCL (NM_018062) Human Tagged ORF Clone

Product data:

Product Type:	Expression Plasmids
Product Name:	FANCL (NM_018062) Human Tagged ORF Clone
Tag:	Myc-DDK
Symbol:	FANCL
Synonyms:	FAAP43; PHF9; POG
Mammalian Cell Selection:	Neomycin
Vector:	pCMV6-Entry (PS100001)
E. coli Selection:	Kanamycin (25 ug/mL)
ORF Nucleotide Sequence:	>RC208718 ORF sequence Red=Cloning site Blue=ORF Green=Tags(s)

TTTTGTAATACGACTCACTATAGGGCGGCCGGAATTCGTCGACTGGATCCGGTACCGAGGAGATCTGCC
GCC**CGATCGC**C

ATGGCGGTGACGGAAGCGAGCCTGTTGCGCCAGTGCCCCCTGCTTCTGCCCCAGAACCGGTCGAAAACCG
TGTATGAGGGATTCATCTCGGCTCAGGGAAGAGACTTCCACCTTAGGATAGTGTTCCTGAAGATTTACA
ACTGAAGAATGCAAGATTATTATGTAGTTGGCAGCTGAGAACAATACTTAGTGGATACCATCGAATAGTA
CAACAGAGAATGCAGCACTCTCCTGATCTAATGAGCTTTATGATGGAGTTGAAGATGCTTTTGAAGTTG
CCTTAAAGAATAGACAAGAGCTGTATGCACTACCTCCTCCTCCCGATTCTACTCAAGCCTTATTGAAGA
GATAGGAACTCTTGGTTGGGATAAACTTGTGTATGCGGATACCTGCTTCAGTACCATCAAGTTAAAAGCA
GAAGATGCTTCTGGTAGAGAGCATTTAATCACTCTCAAGTTGAAGCAAAGTATCCTGCAGAATCACCAG
ATTATTTTGTGGATTTTCTGTTCCATTTTGTGCCTCCTGGACACCTCAGAGCTCCTTAATAAGCATTTA
TAGTCAGTTTTTGGCAGCAATAGAATCACTAAAGGCATTCTGGGATGTTATGGATGAAATCGATGAGAAG
ACCTGGTACTTGAGCCAGAAAACTCCACGGAGTGCAACAGCACGCAGAAATGCAATTAGGTAATAATG
TTCCATAAATATAGAGGTAGACCCAGGCATCCTACTATGCTTCTGAGTGCTTCTTCTTGGAGCTGA
CCATGTGGTAAAACCCCTGGGAATTAAGCTGAGCAGGAACATACATTTGTGGGATCCAGAAAATAGTGTG
TTACAAAATTTGAAAGATGTTTTAGAAATGATTTTCCAGCTCGTCTATCCTGGAAAAATCTGATTTTA
CTATGGATTGTGGAATTTGTTATGCTTATCAACTTGACGGTACCATTCTGATCAAGTGTGTGATAATTC
CCAGTGTGGACAACCTTTCCATCAAATATGCTTATATGAGTGGCTGAGAGGACTACTAAGTATAGACAG
AGTTTTAACATCATATTTGGTGAATGTCCATATTGTAGTAAGCCAATTACCTTAAAAATGTCTGGAAGGA
AACAC

ACGCGTACGCGGCCGCTCGAGCAGAAACTCATCTCAGAAGAGGATCTGGCAGCAATGATATCCTGGATT
ACAAGGATGACGACGATAAGGTTTAA



Protein Sequence: >RC208718 protein sequence
 Red=Cloning site Green=Tags(s)

MAVTEASLLRQCPLLLPQNRSKTVYEGFISAQGRDFHLRIVLPEDLQLKNARLLCSWQLRTILSGYHRIV
 QQRMQHSPDLMSFMMELKMLLEVALKNRQELYALPPPQFYSSLIEEIGTLGWDKLVYADTCFSTIKLKA
 EDASGREHLITLKLKAKYPAESP DYFVDFPVPFCASWTPQSSLISIIYSQFLAAIESLKAFWDMDEIDEK
 TWVLEPEKPPRSATARRIALGNNVSIINIEVDPRHPTMLPECFVLGADHVVKPLGIKLSRNIHLWDPENSV
 LQNLKDVLEIDFPARAILEK SDF TMDCGICYAYQLDGTIPDQVCDNSQCGQPFHQICLYEWL RGLLTSRQ
 SFNIIFGECPCYCKPITLKMSGRKH

TRTRPLEQKLISEEDLAANDILDYKDDDDKV

Chromatograms: https://cdn.origene.com/chromatograms/mk6091_d05.zip

Restriction Sites: SgfI-MluI

Cloning Scheme:



ACCN: NM_018062

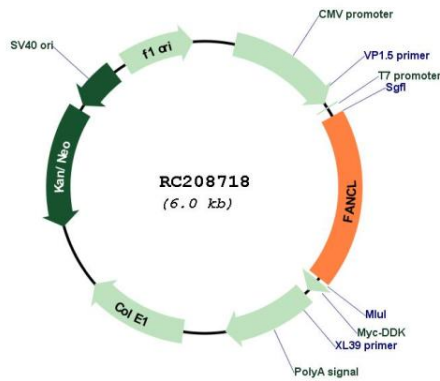
ORF Size: 1125 bp

OTI Disclaimer: Due to the inherent nature of this plasmid, standard methods to replicate additional amounts of DNA in E. coli are highly likely to result in mutations and/or rearrangements. Therefore, OriGene does not guarantee the capability to replicate this plasmid DNA. Additional amounts of DNA can be purchased from OriGene with batch-specific, full-sequence verification at a reduced cost. Please contact our customer care team at custsupport@origene.com or by calling 301.340.3188 option 3 for pricing and delivery.

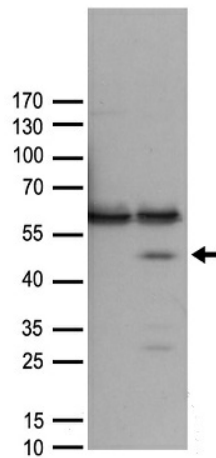
The molecular sequence of this clone aligns with the gene accession number as a point of reference only. However, individual transcript sequences of the same gene can differ through naturally occurring variations (e.g. polymorphisms), each with its own valid existence. This clone is substantially in agreement with the reference, but a complete review of all prevailing variants is recommended prior to use. [More info](#)

OTI Annotation:	This clone was engineered to express the complete ORF with an expression tag. Expression varies depending on the nature of the gene.
Components:	The ORF clone is ion-exchange column purified and shipped in a 2D barcoded Matrix tube containing 10ug of transfection-ready, dried plasmid DNA (reconstitute with 100 ul of water).
Reconstitution Method:	<ol style="list-style-type: none">1. Centrifuge at 5,000xg for 5min.2. Carefully open the tube and add 100ul of sterile water to dissolve the DNA.3. Close the tube and incubate for 10 minutes at room temperature.4. Briefly vortex the tube and then do a quick spin (less than 5000xg) to concentrate the liquid at the bottom.5. Store the suspended plasmid at -20°C. The DNA is stable for at least one year from date of shipping when stored at -20°C.
RefSeq:	NM_018062.4
RefSeq Size:	1738 bp
RefSeq ORF:	1128 bp
Locus ID:	55120
UniProt ID:	Q9NW38
Cytogenetics:	2p16.1
Protein Pathways:	Ubiquitin mediated proteolysis
MW:	42.9 kDa
Gene Summary:	<p>This gene encodes a ubiquitin ligase that is a member of the Fanconi anemia complementation group (FANC). Members of this group are related by their assembly into a common nuclear protein complex rather than by sequence similarity. This gene encodes the protein for complementation group L that mediates monoubiquitination of FANCD2 as well as FANCI. Fanconi anemia is a genetically heterogeneous recessive disorder characterized by cytogenetic instability, hypersensitivity to DNA crosslinking agents, increased chromosomal breakage, and defective DNA repair. Alternative splicing results in multiple transcript variants. [provided by RefSeq, May 2018]</p>

Product images:



Circular map for RC208718



HEK293T cells were transfected with the pCMV6-ENTRY control (Cat# [PS100001], Left lane) or pCMV6-ENTRY FANCL (Cat# RC208718, Right lane) cDNA for 48 hrs and lysed. Equivalent amounts of cell lysates (5 ug per lane) were separated by SDS-PAGE and immunoblotted with anti-FANCL antibody (Cat# [TA890015]). Positive lysates [LY426502] (100ug) and [LC426502] (20ug) can be purchased separately from OriGene.