

Product datasheet for **RC208712**

RIAM (APBB1IP) (NM_019043) Human Tagged ORF Clone

Product data:

Product Type:	Expression Plasmids
Product Name:	RIAM (APBB1IP) (NM_019043) Human Tagged ORF Clone
Tag:	Myc-DDK
Symbol:	RIAM
Synonyms:	INAG1; PREL1; RARP1; RIAM
Mammalian Cell Selection:	Neomycin
Vector:	pCMV6-Entry (PS100001)
E. coli Selection:	Kanamycin (25 ug/mL)



[View online »](#)

ORF Nucleotide Sequence:

>RC208712 ORF sequence
 Red=Cloning site Blue=ORF Green=Tags(s)

TTTTGTAATACGACTCACTATAGGGCGGCCGGGAATTCGTCGACTGGATCCGGTACCGAGGAGATCTGCC
 GCC**CGGATCGCC**

ATGGGTGAGTCAAGTGAAGACATAGACCAAATGTTTCAGCACTTTGCTGGGAGAGATGGATCTTCTGACTC
 AGAGTTTAGGAGTTGACTCTCCCTCCTGACCCTAATCCACCCAGAGCTGAATTTAACTACAGTGT
 GGGTTTTAAAGATTTAAATGAGTCTTAAATGCACTGGAAGACCAAGATTTAGATGCTCTCATGGCAGAT
 CTGGTAGCAGACATAAGTGAGGCTGAGCAGAGGACAATCCAGGCACAGAAAGAGTCTTGCAGAATCAAC
 ATCATTACAGCATCTCTACAAGCATCAATTTTCAGTGGTGCAGCCTCTCTTGGTTATGGAACAAATGTTGC
 TGCCACTGGTATCAGCCAATATGAGGATGACTTACCACCTCCACCAGCCGATCCTGTGTTAGACCTTCCA
 CTGCCACCACCACCTCCTGAACCTCTCTCTCAGGAAGAGGAAGAAGCCCAAGCCAAGGCTGATAAAATTA
 AGCTGGCGCTGGAAAACTGAAGGAGGCCAAGGTTAAGAAGCTCGTCGTAAGGTGCACATGAATGATAA
 CAGCACAAGTCACTGATGGTGGATGAGCGGCAGCTGGCCGAGATGTTCTGGACAACCTTTTCGAGAAA
 ACTCATTGTGACTGCAATGTAGACTGGTGTCTTTATGAAATCTACCCGGAAGTACAAATTGAGAGGTTTT
 TTGAAGACCATGAAAATGTTGTTGAAGTCTTATCAGACTGGACAAGAGACACAGAAAAATAAAATACTATT
 TTTGGAGAAAAGAGGAGAAATATGCTGTATTTAAAAACCCCAAGATTTCTACTTGGATAACAGAGGAAAA
 AAAGAAAGCAAGGAACTAATGAGAAAAATGAATGCTAAGAACAAGGAATCCTTACTTGGAGAAAGTTTCT
 GTGGAACATCTATCATTGTACCAGAACTGGAAGGAGCTCTTTATTTGAAAGAAGATGGAAGAAATCCTG
 GAAAAGGCGCTATTTCTTTACGGGCTTCTGGAATTTATTATGTACCCAAAGGAAAGACTAAGACATCT
 CGAGATCTGGCGTGTATACAGTTTGAATTTCAACATTTACTATGGGACTCAGCATAAAATGAAAT
 ATAAAGCGCCCACTGACTATTGCTTTGTTTTAAAGCACCCCAAAATTCAGAAGGAGTCCCAGTATATCAA
 GTATCTCTGCTGTGATGACACAAGAACCCTTAACCAAGTGGGTCATGGGAATACGGATAGCCAAGTATGGG
 AAGACTCTCTATGATAACTACCAGCGGGCTGTGGCAAAGGCTGGACTTGCCCTCTCGGTGGACAAACTTGG
 GGACAGTCAATGCAGCTGCACCAGCTCAGCCATCTACAGGACCTAAAACAGGCACCACCCAGCCCAATGG
 ACAGATCCCCAGGCTACACATTCTGTCAGTGTGTTCTCAAGAGGCCAGAGACATGTGAAACATCG
 AAGGATAAGAAGCCAGCCCTCGGGAACCACCACGACCCGGCAGTGCCCGGGCCCGCACGCCCCCAAGT
 CCAGCCTGCCCGCCCTCCGGTGGGAGGTCTCCGACACCAGCGGAGTCCCGCCACGCCCTCAA
 GGCCAAGGGCACAGGCGGCGGGGCTTGCCCGCCACCCGACGACTTCTGCGCGCCCGCCACCGCCG
 CGCCCTCGATGACCTGAGCTCCCGCCCGCCCGCCGACTTCATGGAGCCGCCCCAGACTTCTGTGC
 CCCC GCCCGCCGCTCGTACGCAGGATCGCGGGCTCAGAGCTGCCCGCCCGCCCGCCCGCCCGCC
 GCCCGCGCCCGCCCGTCCCGACTCCGCCAGGCCGCCCGCCCGCGGTGGCCAAGAGGCTCCTGTGCC
 CCCAAGAGGCAAGAGAACCAGGCCACCCGGCGGAGCAGGAGCGGGGAGCAAGATTTATGTCAGACC
 TCATGAAAGCTTTGCAAAAAGAGAGGCAACGTGTC

ACGGTACGCGGCCGCTCGAGCAGAACTCATCTCAGAAGAGGATCTGGCAGCAATGATATCCTGGATT
 ACAAGGATGACGACGATAAGGTTTAA

Protein Sequence: >RC208712 protein sequence
 Red=Cloning site Green=Tags(s)

MGESSEDIDQMFSTLLGEMDLLTQSLGVDLTPPPDPNPPRAEFNYSVGFKDLNESLNALEDQDLDALMAD
 LVADISEAEQRTIQAQKESLQNHHSASLQASIFSGAASLGYGTNVAATGISQYEDDLPPPPADPVL DLP
 LPPPPPEPLSQEEEEAAKADKIKLALALEKLKEAKVKKL VVKVHMNDNSTKSLMVDERQLARDVLDNLF EK
 THCDCNVDWCLYEIYPELQIERFFEDHENVVEVLSDWTRDTENKILFLEKEEKYAVFKNPQNFYLDNRGK
 KESKETNEKMNAKNKESLLEESFCGTSIIVPELEGALYLKEDGKKS WKRRYFLLRASGIYYVPKGKTKTS
 RDLACFIQFENVNIYYGTQHKMKYKAPTDYCFVLKHPQIQKESQYIKYLCDDTRTLNQWVMGIRIAKYG
 KTYLDNYQRAVAKAGLASRWTNLGTVNAAAPAQPSTGPKTGTTQPNGQIPQATHSVSAVLQEAQRHAETS
 KDKKPALGNHHPAVPRAPHAPKSSLP PPPVRRSSDTSGSPATPLKAKGTGGGGLPAPPDDFLPPPPPP
 PPLDDPELPPPPDFMEPPDFVPPPPSYAGIAGSELPPPPPPPPAPAPVPDSARPPPAVAKRPPVP
 PKRQENPGHPGGAGGGEQDFMSDLMKALQK KRGVNS

TRTRPLEQKLISEEDLAANDILDYKDDDDKV

Chromatograms: https://cdn.origene.com/chromatograms/mk6813_a04.zip

Restriction Sites: SgfI-MluI

Cloning Scheme:



ACCN: NM_019043

ORF Size: 1998 bp

OTI Disclaimer: The molecular sequence of this clone aligns with the gene accession number as a point of reference only. However, individual transcript sequences of the same gene can differ through naturally occurring variations (e.g. polymorphisms), each with its own valid existence. This clone is substantially in agreement with the reference, but a complete review of all prevailing variants is recommended prior to use. [More info](#)

OTI Annotation: This clone was engineered to express the complete ORF with an expression tag. Expression varies depending on the nature of the gene.

Components: The ORF clone is ion-exchange column purified and shipped in a 2D barcoded Matrix tube containing 10ug of transfection-ready, dried plasmid DNA (reconstitute with 100 ul of water).

Reconstitution Method:

1. Centrifuge at 5,000xg for 5min.
2. Carefully open the tube and add 100ul of sterile water to dissolve the DNA.
3. Close the tube and incubate for 10 minutes at room temperature.
4. Briefly vortex the tube and then do a quick spin (less than 5000xg) to concentrate the liquid at the bottom.
5. Store the suspended plasmid at -20°C. The DNA is stable for at least one year from date of shipping when stored at -20°C.

RefSeq: [NM_019043.4](#)

RefSeq Size: 2659 bp

RefSeq ORF: 2001 bp

Locus ID: 54518

UniProt ID: [Q7Z5R6](#)

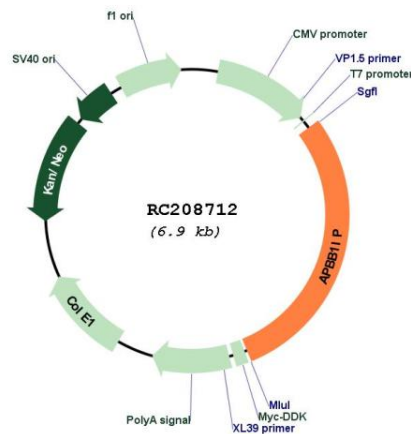
Cytogenetics: 10p12.1

Domains: RA, PH

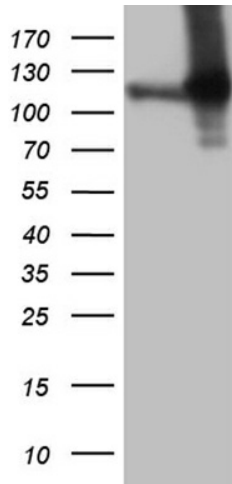
MW: 73.2 kDa

Gene Summary: Appears to function in the signal transduction from Ras activation to actin cytoskeletal remodeling. Suppresses insulin-induced promoter activities through AP1 and SRE. Mediates Rap1-induced adhesion.[UniProtKB/Swiss-Prot Function]

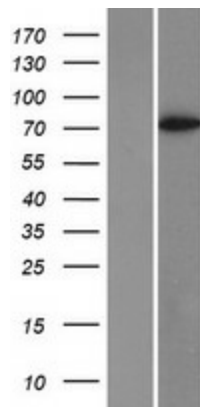
Product images:



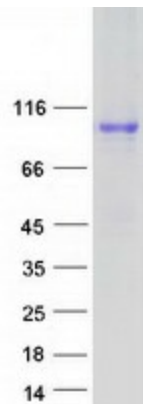
Circular map for RC208712



HEK293T cells were transfected with the pCMV6-ENTRY control (Cat# [PS100001], Left lane) or pCMV6-ENTRY APBB1IP (Cat# RC208712, Right lane) cDNA for 48 hrs and lysed. Equivalent amounts of cell lysates (5 ug per lane) were separated by SDS-PAGE and immunoblotted with anti-APBB1IP (Cat# [TA809230])(1:2000). Positive lysates [LY412750] (100ug) and [LC412750] (20ug) can be purchased separately from OriGene.



Western blot validation of overexpression lysate (Cat# [LY412750]) using anti-DDK antibody (Cat# [TA50011-100]). Left: Cell lysates from untransfected HEK293T cells; Right: Cell lysates from HEK293T cells transfected with RC208712 using transfection reagent MegaTran 2.0 (Cat# [TT210002]).



Coomassie blue staining of purified APBB1IP protein (Cat# [TP308712]). The protein was produced from HEK293T cells transfected with APBB1IP cDNA clone (Cat# RC208712) using MegaTran 2.0 (Cat# [TT210002]).