

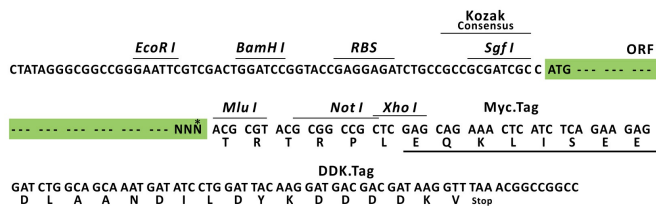
Product datasheet for RC208710L1

C3orf37 (HMCES) (NM_001006109) Human Tagged Lenti ORF Clone

Product data:

Product Type:	Expression Plasmids
Product Name:	C3orf37 (HMCES) (NM_001006109) Human Tagged Lenti ORF Clone
Tag:	Myc-DDK
Symbol:	C3orf37
Synonyms:	C3orf37; DC12; SRAPD1
Mammalian Cell Selection:	None
Vector:	pLenti-C-Myc-DDK (PS100064)
E. coli Selection:	Chloramphenicol (34 ug/mL)
ORF Nucleotide Sequence:	The ORF insert of this clone is exactly the same as(RC208710).
Restriction Sites:	SgfI-MluI
Cloning Scheme:	

Cloning sites used for ORF Shuttling:



* The last codon before the Stop codon of the ORF.

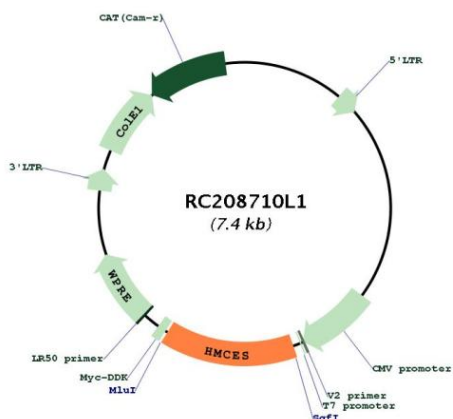
ACCN:	NM_001006109
ORF Size:	1062 bp



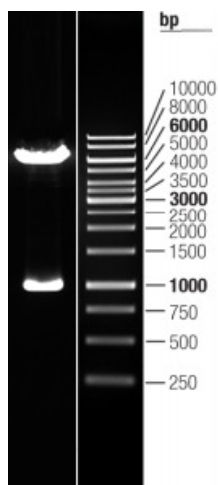
[View online »](#)

OTI Disclaimer:	The molecular sequence of this clone aligns with the gene accession number as a point of reference only. However, individual transcript sequences of the same gene can differ through naturally occurring variations (e.g. polymorphisms), each with its own valid existence. This clone is substantially in agreement with the reference, but a complete review of all prevailing variants is recommended prior to use. More info
OTI Annotation:	This clone was engineered to express the complete ORF with an expression tag. Expression varies depending on the nature of the gene.
Components:	The ORF clone is ion-exchange column purified and shipped in a 2D barcoded Matrix tube containing 10ug of transfection-ready, dried plasmid DNA (reconstitute with 100 ul of water).
Reconstitution Method:	<ol style="list-style-type: none">1. Centrifuge at 5,000xg for 5min.2. Carefully open the tube and add 100ul of sterile water to dissolve the DNA.3. Close the tube and incubate for 10 minutes at room temperature.4. Briefly vortex the tube and then do a quick spin (less than 5000xg) to concentrate the liquid at the bottom.5. Store the suspended plasmid at -20°C. The DNA is stable for at least one year from date of shipping when stored at -20°C.
RefSeq:	NM_001006109.1 , NP_001006109.1
RefSeq Size:	1809 bp
RefSeq ORF:	1065 bp
Locus ID:	56941
UniProt ID:	Q96FZ2
Cytogenetics:	3q21.3
MW:	40.6 kDa
Gene Summary:	Sensor of abasic sites in single-stranded DNA (ssDNA) required to preserve genome integrity by promoting error-free repair of abasic sites (PubMed:30554877). Acts as an enzyme that recognizes and binds abasic sites in ssDNA at replication forks and chemically modifies the lesion by forming a covalent cross-link with DNA (PubMed:30554877). The HMCEs DNA-protein cross-link is then degraded by the proteasome (PubMed:30554877). Promotes error-free repair of abasic sites by acting as a 'suicide' enzyme that is degraded, thereby protecting abasic sites from translesion synthesis (TLS) polymerases and endonucleases that are error-prone and would generate mutations and double-strand breaks (PubMed:30554877). Acts as a protease: mediates autocatalytic processing of its N-terminal methionine in order to expose the catalytic cysteine (By similarity). Specifically binds 5-hydroxymethylcytosine (5hmC)-containing DNA in stem cells (By similarity). May act as an endonuclease that specifically cleaves 5hmC-containing DNA; additional experiments are however required to confirm this activity in vivo (By similarity).[UniProtKB/Swiss-Prot Function]

Product images:



Circular map for RC208710L1



Double digestion of RC208710L1 using SgfI and MluI