

## Product datasheet for **RC208706**

### **P2Y10 (P2RY10) (NM\_014499) Human Tagged ORF Clone**

#### Product data:

Product Type:	Expression Plasmids
Product Name:	P2Y10 (P2RY10) (NM_014499) Human Tagged ORF Clone
Tag:	Myc-DDK
Symbol:	P2Y10
Synonyms:	LYPSR2; P2Y10
Mammalian Cell Selection:	Neomycin
Vector:	pCMV6-Entry (PS100001)
E. coli Selection:	Kanamycin (25 ug/mL)
ORF Nucleotide Sequence:	>RC208706 ORF sequence Red=Cloning site Blue=ORF Green=Tags(s)

TTTTGTAATACGACTCACTATAGGGCGGCCGGAATTCGTCGACTGGATCCGGTACCGAGGAGATCTGCC  
GCC**CGATCGCC**

ATGGCTAACCTTGACAAATACACTGAAACATTCAAGATGGGTAGCAACAGTACCAGCACTGCTGAGATTT  
ACTGTAATGTCACCTAATGTGAAATTTCAATACTCCCTCTATGCAACCACCTATATCCTCATATTCATTCC  
TGGTCTTCTGGCTAACAGTGCAGCCTTGTGGTCTGTGCCGCTTCATCAGCAAGAAAAATAAGCCATC  
ATTTTCATGATCAACCTCTCTGTGGCTGACCTTGCTCATGTATTATCTTTACCCCTCCGGATTTACTATT  
ACATCAGCCACCACTGGCCTTCCAGAGAGCCCTTGCCTGCTCTGCTTCTACCTGAAGTATCTCAACAT  
GTATGCCAGCATTGTTTCCTGACGTGCATCAGTCTTCAAAGGTGCTTTTTCTCCTCAAGCCCTTCAGG  
GCCAGAGACTGGAAGCGTAGGTACGATGTGGGCATCAGTCTGCCATCTGGATCGTTGTGGGGACTGCC  
GTTTGCCATTTCCCATCCTGAGAAGCACAGACTTAAACAACAAGTCCTGCTTTGCTGATCTTGGATA  
CAAGCAAATGAATGCAGTTGCGTTGGTCGGGATGATTACAGTTGCTGAGCTTGCAGGATTTGTGATCCCA  
GTGATCATCATCGCATGGTGTACCTGAAAACTACTATATCCTTGAGACAGCCACCAATGGCTTTCCAAG  
GGATCAGTGAGAGGCAGAAAGCACTGCGGATGGTGTTCATGTGTGCTGCAGTCTTCTTCATCTGCTTAC  
TCCCTATCATATTAACCTTATTTTTTACACCATGGTAAAGGAAACCATCATTAGCAGTTGCCCCGTTGTC  
CGAATCGCACTGTATTTCCACCCTTTTGCCTGTGCCTTGAAGTCTCTGCTGCCCTTTGGATCCAATTC  
TTTATTACTTTATGGCTTCAGAGTTTCGTGACCAACTATCCCCCATGGCAGTTCTGTGACCCGCTCCCG  
CCTCATGAGCAAGGAGAGTGGTTCATCAATGATTGGC

**ACGCGT**ACGCGGCCGCTCGAGCAGAACTCATCTCAGAAGAGGATCTGGCAGCAAATGATATCCTGGATT  
ACAAGGATGACGACGATAAGGTTTAA



[View online »](#)

**Protein Sequence:** >RC208706 protein sequence  
Red=Cloning site Green=Tags(s)

MANLDKYTETFKMGSNSTSTAEIYCNVTNVKFQYSLYATTYILIFIPGLLANSAALWLCRFISKKNKAI  
 IFMINLSVADLAHVLSLPLRIYYISHHWPFRALCLLCFYLYLNMYASICFLTCISLQRCFFLLKPF  
 ARDWKRRYDVGISAAIWI VVGTA CLPFPILRSTDLN N N N K S C F A D L G Y K Q M N A V A L V G M I T V A E L A G F V I P  
 V I I I A W C T W K T T I S L R Q P P M A F Q G I S E R Q K A L R M V F M C A A V F F I C F T P Y H I N F I F Y T M V K E T I I S S C P V V  
 R I A L Y F H P F C L C L A S L C L L D P I L Y Y F M A S E F R D Q L S R H G S S V T R S R L M S K E S G S S M I G

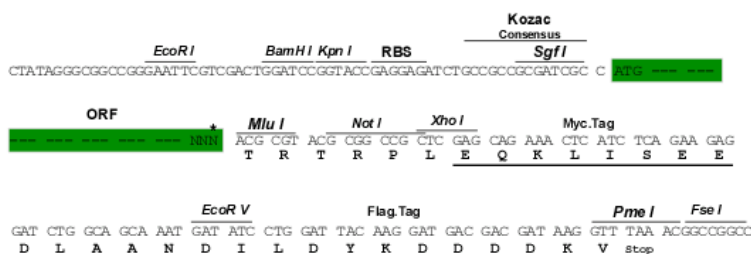
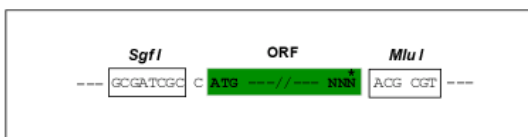
TRTRPLEQKLISEEDLAANDILDYKDDDDKV

**Chromatograms:** [https://cdn.origene.com/chromatograms/mk6091\\_d01.zip](https://cdn.origene.com/chromatograms/mk6091_d01.zip)

**Restriction Sites:** SgfI-MluI

**Cloning Scheme:**

Cloning sites used for ORF Shuttling:



\* The last codon before the Stop codon of the ORF

**ACCN:** NM\_014499

**ORF Size:** 1017 bp

**OTI Disclaimer:** The molecular sequence of this clone aligns with the gene accession number as a point of reference only. However, individual transcript sequences of the same gene can differ through naturally occurring variations (e.g. polymorphisms), each with its own valid existence. This clone is substantially in agreement with the reference, but a complete review of all prevailing variants is recommended prior to use. [More info](#)

**OTI Annotation:** This clone was engineered to express the complete ORF with an expression tag. Expression varies depending on the nature of the gene.

**Components:** The ORF clone is ion-exchange column purified and shipped in a 2D barcoded Matrix tube containing 10ug of transfection-ready, dried plasmid DNA (reconstitute with 100 ul of water).

**Reconstitution Method:**

1. Centrifuge at 5,000xg for 5min.
2. Carefully open the tube and add 100ul of sterile water to dissolve the DNA.
3. Close the tube and incubate for 10 minutes at room temperature.
4. Briefly vortex the tube and then do a quick spin (less than 5000xg) to concentrate the liquid at the bottom.
5. Store the suspended plasmid at -20°C. The DNA is stable for at least one year from date of shipping when stored at -20°C.

**RefSeq:** [NM\\_014499.4](#)

**RefSeq Size:** 1871 bp

**RefSeq ORF:** 1020 bp

**Locus ID:** 27334

**UniProt ID:** [O00398](#)

**Cytogenetics:** Xq21.1

**Domains:** 7tm\_1

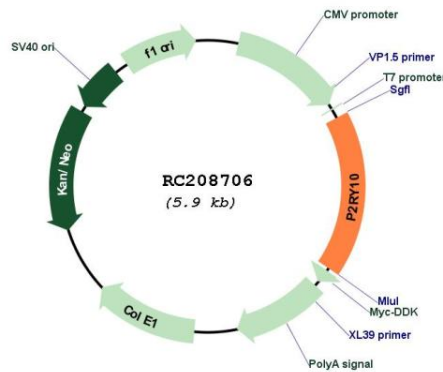
**Protein Families:** Druggable Genome, GPCR, Transmembrane

**Protein Pathways:** Neuroactive ligand-receptor interaction

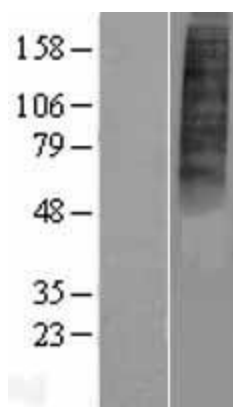
**MW:** 38.8 kDa

**Gene Summary:** The protein encoded by this gene belongs to the family of G-protein coupled receptors that are preferentially activated by adenosine and uridine nucleotides. There is a pseudogene for this gene nearby on chromosome X. Multiple alternatively spliced transcripts have been observed. [provided by RefSeq, Apr 2016]

**Product images:**



Circular map for RC208706



Western blot validation of overexpression lysate (Cat# [LY415234]) using anti-DDK antibody (Cat# [TA50011-100]). Left: Cell lysates from untransfected HEK293T cells; Right: Cell lysates from HEK293T cells transfected with RC208706 using transfection reagent MegaTran 2.0 (Cat# [TT210002]).