

## Product datasheet for RC208702

### MYG1 (NM\_021640) Human Tagged ORF Clone

#### Product data:

Product Type:	Expression Plasmids
Product Name:	MYG1 (NM_021640) Human Tagged ORF Clone
Tag:	Myc-DDK
Symbol:	MYG1
Synonyms:	C12orf10; Gamm1; MST024; MSTP024; MYG
Mammalian Cell Selection:	Neomycin
Vector:	pCMV6-Entry (PS100001)
E. coli Selection:	Kanamycin (25 ug/mL)
ORF Nucleotide Sequence:	>RC208702 ORF sequence Red=Cloning site Blue=ORF Green=Tags(s)

TTTTGTAATACGACTCACTATAGGGCGGCCGGAATTCGTCGACTGGATCCGGTACCGAGGAGATCTGCC  
GCC**CGATCGCC**

ATGGGACACCGCTTCTGCGCGGCTCTTAACGCTGCTGCTGCCGCCACCCCTGTATACCCGGCACC  
GCATGCTCGTCCAGAGTCCGTCGCCCCCAAAACGATCCCGCAGCAAACCTCATGGCACCGCCCGAAT  
CGGGACGCACAATGGCACCTTCCACTGCGACGAGGCATGGCATGCGCACTGCTTCGCTCCTGCCGGAG  
TACCGGGATGCAGAGATTGTGCGGACCCGGATCCCGAAAACTCGTTCCTGTGACATCGTGGTGGACG  
TGGGGGGCGAGTACGACCCTCGGAGACACCGATATGACCATCACAGAGGTCTTTCACAGAGACCATGAG  
CTCCCTGTCCCTGGGAAGCCGTGGCAGACCAAGCTGAGCAGTGCGGGACTCATCTATCTGCACTTCGGG  
CACAAGCTGCTGGCCAGTTGCTGGGCACTAGTGAAGAGGACAGCATGGTGGGCACCCCTCTATGACAAGA  
TGTATGAGAACTTTGTGGAGGAGGTGGATGCTGTGGACAATGGGATCTCCAGTGGGCAGAGGGGGAGCC  
TCGATATGCACTGACCACTACCCGTAGTGCACGAGTTGCTCGACTTAATCCTACCTGGAACCACCCCGAC  
CAAGACTGAGGCAGGGTTCAAGCGTGAATGGATCTGGTTCAAGAGGAGTTTCTGCAGAGATTAGATT  
TCTACCAACACAGCTGGCTGCCAGCCCGGCCTTGGTGAAGAGGCCCTTGCCAGCGATTCCAGGTGGA  
CCTGGGCTGTCCCCTCCAGTGGCCATCTCTTTGTTATCTACACTGACCAGGCTGGACAGTGGCGAATA  
AGTGTGTGCCCAAGGAGCCCACTCATTCCAAAGCCGGCTGCCCTGCCAGGCCATGGCGGGGTCTTCG  
GGACGAGGCCCTGGACCAGGTGAGTGGGATCCCTGGCTGCATCTTCGTCATGCAAGCGGCTTCATTGGC  
GGTCACCGCACCCGAGAGGGTGCCTTGAGCATGGCCCGTCCACCTTGCCCGAGCGCTCATACTCCAC  
AAATCTCC

**ACGCGT**ACGCGGCCGCTCGAGCAGAACTCATCTCAGAAGAGGATCTGGCAGCAAATGATATCTGGATT  
ACAAGGATGACGACGATAAGGTTTAA



[View online >](#)



**Reconstitution Method:**

1. Centrifuge at 5,000xg for 5min.
2. Carefully open the tube and add 100ul of sterile water to dissolve the DNA.
3. Close the tube and incubate for 10 minutes at room temperature.
4. Briefly vortex the tube and then do a quick spin (less than 5000xg) to concentrate the liquid at the bottom.
5. Store the suspended plasmid at -20°C. The DNA is stable for at least one year from date of shipping when stored at -20°C.

**RefSeq:** [NM\\_021640.2](#), [NP\\_067653.2](#)

**RefSeq Size:** 1215 bp

**RefSeq ORF:** 1131 bp

**Locus ID:** 60314

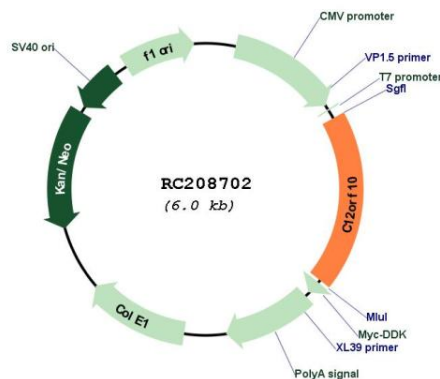
**UniProt ID:** [Q86UA3](#)

**Cytogenetics:** 12q13.13

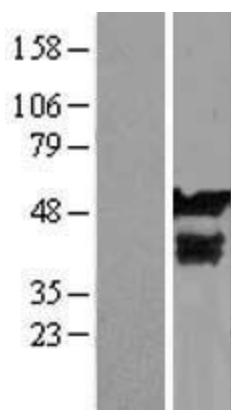
**MW:** 42.5 kDa

**Gene Summary:** 3'-5' RNA exonuclease which cleaves in situ on specific transcripts in both nucleus and mitochondrion. Involved in regulating spatially segregated organellar RNA processing, acts as a coordinator of nucleo-mitochondrial crosstalk (PubMed:31081026). In nucleolus, processes pre-ribosomal RNA involved in ribosome assembly and alters cytoplasmic translation. In mitochondrial matrix, processes 3'-termini of the mito-ribosomal and messenger RNAs and controls translation of mitochondrial proteins (Probable).[UniProtKB/Swiss-Prot Function]

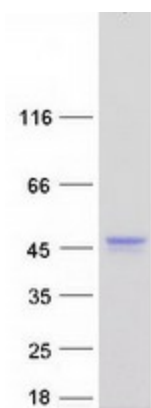
### Product images:



Circular map for RC208702



Western blot validation of overexpression lysate (Cat# [LY411950]) using anti-DDK antibody (Cat# [TA50011-100]). Left: Cell lysates from untransfected HEK293T cells; Right: Cell lysates from HEK293T cells transfected with RC208702 using transfection reagent MegaTran 2.0 (Cat# [TT210002]).



Coomassie blue staining of purified C12orf10 protein (Cat# [TP308702]). The protein was produced from HEK293T cells transfected with C12orf10 cDNA clone (Cat# RC208702) using MegaTran 2.0 (Cat# [TT210002]).