

Product datasheet for RC208701

Claudin 9 (CLDN9) (NM_020982) Human Tagged ORF Clone

Product data:

Product Type:	Expression Plasmids
Product Name:	Claudin 9 (CLDN9) (NM_020982) Human Tagged ORF Clone
Tag:	Myc-DDK
Symbol:	Claudin 9
Synonyms:	DFNB116
Mammalian Cell Selection:	Neomycin
Vector:	pCMV6-Entry (PS100001)
E. coli Selection:	Kanamycin (25 ug/mL)
ORF Nucleotide Sequence:	>RC208701 ORF sequence Red=Cloning site Blue=ORF Green=Tags(s)

TTTTGTAATACGACTCACTATAGGGCGCCGGGAATTCGTCGACTGGATCCGGTACCGAGGAGATCTGCCGCC**CGATCGCC**

ATGGCTTCGACCGGCTTAGAACTGCTGGGCATGACCCTGGCTGTGCTGGGCTGGCTGGGGACCCTGGTGTCTGCGCCCTGCCCTGTGGAAGGTGACCGCCTTCATCGGCAACAGCATCGTGGTGGCCAGGTGGTGTGGAGGGCTGTGGATGTCCTGCGTGGTGCAGAGCACGGGCCAGATGCAGTGCAAGGTGTACGACTCACTGCTGGCTCTGCCGAGGACCTGCAGGCCGCACGTGCCCTCTGTGTCATTGCCCTCCTGCTGGCCCTGCTTGGCTCCTGGTGGCCATCACAGGTGCCAGTGTACCACGTGTGGAGGACGAAGTGCCAAGGCCGTATCGTGCTCACCGCGGGGTATCCTCCTCGCCGGCATCCTGGTGTCTATCCCTGTGTGCTGGACGGCCACGCCATCATCCAGGACTTCTACAACCCCTGGTGGCTGAGGCCCTCAAGCGGGAGCTGGGGCCCTCCCTTACCTGGGCTGGGCGGCGGCTGCACTGCTTATGCTGGGCGGGGGCTCCTCTGCTGCACGTGCCCCCGCCAGGTCGAGCGGCCCGCGGACCTCGGCTGGGCTACTCCATCCCCTCCCGCTCGGGTGCATCTGGACTGGACAAGAGGGACTACGTG

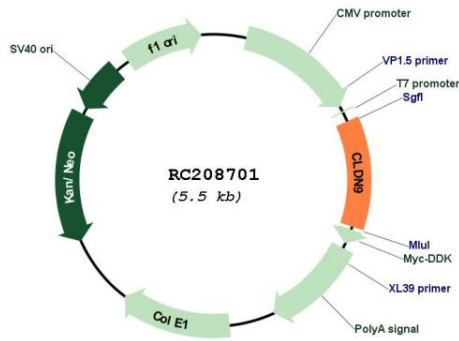
ACGCGTACGCGGCGGCTCGAGCAGAACTCATCTCAGAAGAGGATCTGGCAGCAAATGATATCCTGGATTACAAGGATGACGACGATAAGGTTTAA



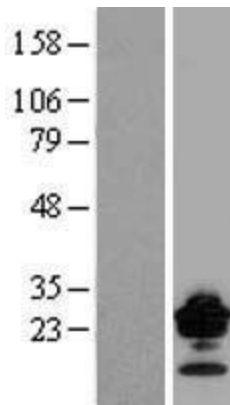
[View online »](#)

Components:	The ORF clone is ion-exchange column purified and shipped in a 2D barcoded Matrix tube containing 10ug of transfection-ready, dried plasmid DNA (reconstitute with 100 ul of water).
Reconstitution Method:	<ol style="list-style-type: none">1. Centrifuge at 5,000xg for 5min.2. Carefully open the tube and add 100ul of sterile water to dissolve the DNA.3. Close the tube and incubate for 10 minutes at room temperature.4. Briefly vortex the tube and then do a quick spin (less than 5000xg) to concentrate the liquid at the bottom.5. Store the suspended plasmid at -20°C. The DNA is stable for at least one year from date of shipping when stored at -20°C.
RefSeq:	NM_020982.4
RefSeq Size:	2139 bp
RefSeq ORF:	654 bp
Locus ID:	9080
UniProt ID:	O95484
Cytogenetics:	16p13.3
Protein Families:	Transmembrane
Protein Pathways:	Cell adhesion molecules (CAMs), Leukocyte transendothelial migration, Tight junction
MW:	22.8 kDa
Gene Summary:	This gene encodes a member of the claudin family. Claudins are integral membrane proteins and components of tight junction strands. Tight junction strands serve as a physical barrier to prevent solutes and water from passing freely through the paracellular space between epithelial or endothelial cell sheets, and also play critical roles in maintaining cell polarity and signal transductions. This protein is one of the entry cofactors for hepatitis C virus. Mouse studies revealed that this gene is required for the preservation of sensory cells in the hearing organ and the gene deficiency is associated with deafness. [provided by RefSeq, Jun 2010]

Product images:



Circular map for RC208701



Western blot validation of overexpression lysate (Cat# [LY412160]) using anti-DDK antibody (Cat# [TA50011-100]). Left: Cell lysates from untransfected HEK293T cells; Right: Cell lysates from HEK293T cells transfected with RC208701 using transfection reagent MegaTran 2.0 (Cat# [TT210002]).



Coomassie blue staining of purified CLDN9 protein (Cat# [TP308701]). The protein was produced from HEK293T cells transfected with CLDN9 cDNA clone (Cat# RC208701) using MegaTran 2.0 (Cat# [TT210002]).