

Product datasheet for **RC208699**

FIGNL1 (NM_001042762) Human Tagged ORF Clone

Product data:

Product Type:	Expression Plasmids
Product Name:	FIGNL1 (NM_001042762) Human Tagged ORF Clone
Tag:	Myc-DDK
Symbol:	FIGNL1
Mammalian Cell Selection:	Neomycin
Vector:	pCMV6-Entry (PS100001)
E. coli Selection:	Kanamycin (25 ug/mL)



[View online »](#)

ORF Nucleotide
Sequence:

>RC208699 ORF sequence
Red=Cloning site Blue=ORF Green=Tags(s)

TTTTGTAATACGACTCACTATAGGGCGGCCGGAATTCGTGACTGGATCCGGTACCGAGGAGATCTGCC
GCCGCGATCGCC

ATGCAGACCTCCAGCTCTAGATCTGTGCACCTGAGTGAATGGCAGAAGAATTACTTCGCAATTACATCTG
GCATATGTACCGACCGAAGGCAGATGCATACCGTGCACAGATATTACGCATTCAGTATGCATGGGCAAA
CTCTGAGATTTCCAGGTCTGTGCTACCAAACCTGTTCAAAAAATATGCAGAGAAATATTCTGCAATTATT
GATTCTGACAATGTTGAATCTGGGTTGAATAATTATGCAGAAAACATTTTAACTTTGGCAGGATCTCAAC
AAACAGATAGTGACAAGTGGCAGTCTGGATTGTCAATAAATAATGTTTTCAAAATGAGTAGTGTACAGAA
GATGATGCAAGCTGGCAAAAAATCAAAGACTCTCTGTTGGAACCTGCTCTTGCATCAGTGGTAATCCAT
AAGGAGGCCACTGTCTTTGATCTTCTAAATTTAGTGTGTTGTGGTAGTTCTCAAGAGAGTGACTCATTAC
CTAACTCAGCTCATGATCGAGACCGGACCAAGACTTCCCGGAGAGCAATCGTTTGAACCTCTTCAGAA
TGCCAGCCACCTATGGTGACTAACACTGCTAGGACTTGCCTACATTCTCAGCACCTGTAGGTGAGTCA
GCTACTGCAAAATTCATGTACACCATTGTTTGGAAATGTCAAAAAGGAAAATCACAGCTCTGCAAAAG
AAAACATAGGACTTAATGTGTTCTTATCTAACCAGTCTTGTTCCTGCTGCCTGTGAAAATCCACAGAG
GAAGTCTTTTTATGGTCTGGCACCATTGATGCACTTTCCAATCCAATACTGAATAAGGCTTGTAGTAAA
ACAGAAGATAATGGCCAAAGGAGGATAGCAGCCTGCCTACATTTAAAACCTGCAAAAAGAACAATTATGGG
TAGATCAGCAAAAAAGTACCACCAACCTCAGCGTGCATCAGGGTCTTCATATGGTGGTGTAAAAAGTC
TCTAGGAGCTAGTAGATCCCGAGGGATACTTGGAAAGTTGTTCTCCTATACCAAGCAAGATGGGGGA
GAGCAGAATGGAGGAATGCAATGTAAGCCTTATGGGGCAGGACCTACAGAACCAGCACATCCAGTTGATG
AGCGTCTGAAGAACTTGGAGCCAAGATGATTGAACTTATTATGAATGAGATTATGGATCATGGACCTCC
AGTAAATTGGGAAGATATTGCAGGAGTAGAATTTGCTAAAGCCACCATAAAGGAAATAGTTGTGTGGCCC
ATGTTGAGGCCAGACATCTTTACTGGTTTAAAGGGACCCCTAAAGGAATTTTGCTCTTTGGTCTCCTG
GGACTGGTAAAACCTAATTGGCAAGTGCATTGCTAGTCACTGCTGGGGCAACATTCTTTAGCATCTCTGC
TTCATCTTAACTTCTAATGGGTAGGTGAGGGGAGAAAATGGTCCGTGCATTGTTGCTGTTGCAAGG
TGTGAGCAACCAGCTGTGATATTTATTGACGAAATGATTCTTGTATCTCAACGGGGAGATGGTGAAGC
ATGAATCTTCTAGAAGGATAAAAAACAGAATTTTATGTTCAATTAGATGGAGCAACAACATCTTCTGAAGA
TCGTATCCTAGTGGTGGGAGCAACAATCGCCACAAGAAATGATGAGGCTGCCCGGAGAAGATTGGTG
AAAAGGCTTTATATCCCTCCAGAGCTTCCAGCCAGGAAACAGATAGTAATTAATCTAATGTCCAAG
AGCAGTGTTCCTCAGTGAAGAAGAAATGAAACAGATTGTACAGCAGTCTGATGCGTTTTTCAGGAGCAGA
CATGACACAGCTTTCAGGGAGGCTTCTCTTGGTCTATTTCGAGTTTACAAACTGCTGACATTGCTACC
ATAACACCGGATCAAGTTCGACCATAGCTTACATTGATTTTGAATGCTTTTGAAGTGTGCGACCTA
GTGTTTCTCAAAAAGATTTAGAGCTTTATGAAAACCTGGAACAAAACCTTTTGGTTGTGAAAAG

ACGCGTACGCGGCCGCTCGAGCAGAACTCATCTCAGAAGAGGATCTGGCAGCAATGATATCCTGGATT
ACAAGGATGACGACGATAAGGTTTAA

Protein Sequence: >RC208699 protein sequence
Red=Cloning site Green=Tags(s)

MQTSSRSVHLSWQKNYFAITSGICTGPKADAYRAQILRIQYAWANSEISQVCATKLFKKYAEKYSII
 DSDNVESGLNNAENIL TLAGSQQTSDSKWQSGLSINNVMKSSVQKMMQAGKFKDLSLLEPALASVVIH
 KEATVFDLPKFSVCGSSQESDSLNSAHDRDRDRTQDFPESNRLKLLQNAQPPMVTNTARTCPTFSAPVGES
 ATAKFHVTPLFGNVKKNHSSAKENIGLVFLSNQSCFPAACENPQRKSFYSGTIDALSNPILNKACSK
 TEDNGPKEDSSLPTFKTAKEQLWVDQKKYHQPRASGSSYGGVKKSLGASRSRILGKFVPPIPKQDGG
 EQNGMQCKPYGAGPTEPAHPVDERLKNLEPKMIELIMNEIMDHGPPVNWEDIAGVEFAKATIKEIVVWP
 MLRPDIFTGLRPPKGILLFGPPGTGKTLIGKCIASQSGATFFSISASSLTSKWVGEKEMVRALFAVAR
 CQQPAVIFIDEIDSLLSQRGDGEHESSRRIKTEFLVQLDGATTSSDRILVVGATNRPQEIIDEAARRLV
 KRLYIPLPEASARKQIVINLMSKEQCCLSEEEIEQIVQQSDAFSGADMTQLCREASLGPISRSLQTADIAT
 ITPDQVRPIAYIDFENAFRTVRPSVSPKDELEYENWNKTFGCGK

TRTRPLEQKLISEEDLAANDILDYKDDDDKV

Chromatograms: https://cdn.origene.com/chromatograms/mk6362_d09.zip

Restriction Sites: SgfI-MluI

Cloning Scheme:



ACCN: NM_001042762

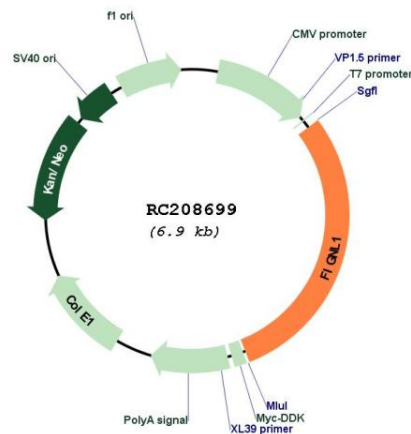
ORF Size: 2022 bp

OTI Disclaimer: The molecular sequence of this clone aligns with the gene accession number as a point of reference only. However, individual transcript sequences of the same gene can differ through naturally occurring variations (e.g. polymorphisms), each with its own valid existence. This clone is substantially in agreement with the reference, but a complete review of all prevailing variants is recommended prior to use. [More info](#)

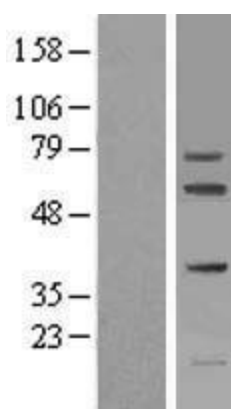
OTI Annotation: This clone was engineered to express the complete ORF with an expression tag. Expression varies depending on the nature of the gene.

Components:	The ORF clone is ion-exchange column purified and shipped in a 2D barcoded Matrix tube containing 10ug of transfection-ready, dried plasmid DNA (reconstitute with 100 ul of water).
Reconstitution Method:	<ol style="list-style-type: none"> 1. Centrifuge at 5,000xg for 5min. 2. Carefully open the tube and add 100ul of sterile water to dissolve the DNA. 3. Close the tube and incubate for 10 minutes at room temperature. 4. Briefly vortex the tube and then do a quick spin (less than 5000xg) to concentrate the liquid at the bottom. 5. Store the suspended plasmid at -20°C. The DNA is stable for at least one year from date of shipping when stored at -20°C.
RefSeq:	<u>NM_001042762.4</u>
RefSeq Size:	3554 bp
RefSeq ORF:	2025 bp
Locus ID:	63979
UniProt ID:	<u>Q6PIW4</u>
Cytogenetics:	7p12.2
MW:	74.1 kDa
Gene Summary:	This gene encodes a member of the AAA ATPase family of proteins. The encoded protein is recruited to sites of DNA damage where it plays a role in DNA double-strand break repair via homologous recombination. This protein has also been shown to localize to the centrosome and inhibit ciliogenesis, and may regulate the proliferation and differentiation of osteoblasts. [provided by RefSeq, Oct 2016]

Product images:



Circular map for RC208699



Western blot validation of overexpression lysate (Cat# [LY420807]) using anti-DDK antibody (Cat# [TA50011-100]). Left: Cell lysates from untransfected HEK293T cells; Right: Cell lysates from HEK293T cells transfected with RC208699 using transfection reagent MegaTran 2.0 (Cat# [TT210002]).