

## Product datasheet for **RC208696**

### PRR14 (NM\_024031) Human Tagged ORF Clone

#### Product data:

Product Type:	Expression Plasmids
Product Name:	PRR14 (NM_024031) Human Tagged ORF Clone
Tag:	Myc-DDK
Symbol:	PRR14
Mammalian Cell Selection:	Neomycin
Vector:	pCMV6-Entry (PS100001)
E. coli Selection:	Kanamycin (25 ug/mL)



[View online »](#)

**ORF Nucleotide Sequence:**

>RC208696 ORF sequence  
 Red=Cloning site Blue=ORF Green=Tags(s)

TTTTGTAATACGACTCACTATAGGGCGGCCGGGAATTCGTCGACTGGATCCGGTACCGAGGAGATCTGCC  
 GCCGCGATCGCC

ATGGACTTGCCCGGGACTCCAGCCCGCTGGCCAGCCGCTGTGTGCCCCAGCCTCTGACTCGAGCAT  
 TATGGGGAGCCAGGAGCCGAAACGGCCGAGGCTGCAGCTCCCGGGGCCCTTCTCCCCTGAAAAGGC  
 CTCTCGCGGGTCTGGCCGTGGTGTCTAGAAGATGTCATGGCTGTTACATGGTCCCGTGGTGCCTCA  
 AAGCAGACCTCCATACCACAGCACCACAGCTACCATCAGGATCCTGTCCACAGGCAGCCGCTGCCTCGC  
 CACCCCGGAGCCGGTGGTCTCGCAGGCCAGGCTCCCGACCCTCTGTGTTGTGTGCGAGCCCTT  
 GAGCCGCATCCACCGGACCTCTCCACCCTGAGGCGGCGATCAAGGACAACCCCTGGCCAGAGGAGGGC  
 CCTTCACAAAAGGTGGACCGGGCCCCAGCCACCCTGGTGGTGTGCTGGAAGACATCGCCAGTCTTA  
 GACCCCGCTGAGGGCTTCATTGATGAGACCCCAACTTCATCATCCAGCACAAGAGCTGAGCCCAT  
 GAGGATAGTTCGCCAGCCAACGCTCCACTGGGGACTAGAACCCCATCCAGCCATCTGCTCTGCCCT  
 GCAGACCTCTGGAGAGCCACCAACAGCCCGAGATCCTGCTCTGGAGCTCCCATCCACCCACCACCGT  
 CCAGCCTTTTACGCCCCGCTCAGTCCCTGGGGCTTGGCCCCGCTTCCGTTCCGTCCGCTCCAAGCT  
 GGAGAGCTTTGCTGACATCTTCTCACGCCAACAACCCACAGCCCCACCCCGTCCCCCAATG  
 AAGCTGGAGTTGAAGATCGCCATCTCAGAGGCCGAGCAGTCTGGGGCTGTGAGGGCACTGCGTCTGTCA  
 GCCCCCGCCCCAATCCGCCAGTGGCGAACTCAGGACCAACAATACCCAGCACTTCTCCCTAAGCCCTC  
 TCTGGGCCGAAGTACTCTGCCCTGATCTGGGGCCCCCTGGCCAGGTACCTGCACCTGGCCACCTGCT  
 CCACCCCAACCAAGCCGACCAGCCGCGCGGCGGACACTGTGGTGGTGGGAAATGGCCGAGCCCGC  
 CACCCCTCGGCCCTGTCTCCGAAAGAGGTCTTCCCTCTCGGAGGAGTGGGAGCCTCCCCTTCTCAC  
 CACATCTTGTCTGCACGGCATCCACTTCTTCTCCGAACAGCAGAACCCAGTTGGGTTCAACCAAA  
 GGAAGGAGCCAAGACCTCAAAGGACCAGGTGCTTTCAGAACCTGAGACCAAGACCATGGGAAAGTGT  
 CTCGATTCAGAATACGCAGAACCAGCCGCTCCTCAGCTAAACCTTACACCAATGGGACTGCCTCGACC  
 AATCAGGTTGAACAAGAAGGAGTTCAGCTTGAAGAAATTTACACCAACAAGAATTACCAATCACCCACA  
 ACCAGGAGGACCTTTGAGACCATCTTTGAGGAACCCGGGAGCGCAATGGGACTCTGATTTTACCAGCT  
 CAAGGAAGCTCCGGCGGGCTGTGGAATTCGGGACAGCAGCTTCTCGATCACGAAGACCGTCCCGTGG  
 GGTCCGGGCTGCAGGGGGCAGGACTGTTCTCCCAATGTGGCCCCAGCCCTGATGTGGCCCCCTGCTC  
 CAGCAGCGGCTGGAGGAGCTAGATGCCTTCTCCTGGAGGAAGAAACAGTATGATCGGGAGCAGCCCACT  
 GGACC

ACGCGTACGCGGCCGCTCGAGCAGAAACTCATCTCAGAAGAGGATCTGGCAGCAAATGATATCCTGGATT  
 ACAAGGATGACGACGATAAGGTTTAA

**Protein Sequence:**

>RC208696 protein sequence  
 Red=Cloning site Green=Tags(s)

MDLPGDSSPPGQPRQLCRQPLTRALWGARSPKRPRQLPGAPSPLEKASRRVLAVVLEDVMAVHMVPVVPV  
 KQTSIPQHSHYHQDPVHRQPPASPPRQAGWSSQARPPDPLCLCREPLSRIHRTSSTLRRRSRTTPGPEEG  
 PSQKVDRAPQPTLVVMLEDIASPRPPAEGFIDETPNFIIPAQRAEPMRIVRQPTPPPGLDEPPFPQSALP  
 ADPLESPPTAPDPALELPSTPPSSLLRPLSPWGLAPLFRSVRSKLESFADIFLTPNKTPQPPPPSPM  
 KLELKIASEAEQSGAAEGTASVSPRPPIRQWRTQDHNTALLPKPSLGRSYSCPDLGPPGPGTCTWPPA  
 PPQPSRPRRRHTVGGGEMARPPPPRCLRKEVFPLGGVGASPLTSSCSSTASTSSEPAEPLRGSTK  
 GKEPRASKDQVLEPETKTMGKVSFRIRRTPARPQLNLTMPGLPRPIRLNKKEFSLEEIYTNKNYSPT  
 TRRTFETIFEEPRERNGTLIFTSSRKLRAVEFRDSSLPRSRPRSRGVRAAGGRTVPPNVAPSPDVGPLL  
 QQRLEELDALLLEEETVDREQPHWT

TRTRPLEQKLISEEDLAANDILDYKDDDDKV

**Chromatograms:**

[https://cdn.origene.com/chromatograms/mk6361\\_b09.zip](https://cdn.origene.com/chromatograms/mk6361_b09.zip)

Restriction Sites: SgfI-MluI

Cloning Scheme:



ACCN: NM\_024031

ORF Size: 1755 bp

OTI Disclaimer: The molecular sequence of this clone aligns with the gene accession number as a point of reference only. However, individual transcript sequences of the same gene can differ through naturally occurring variations (e.g. polymorphisms), each with its own valid existence. This clone is substantially in agreement with the reference, but a complete review of all prevailing variants is recommended prior to use. [More info](#)

OTI Annotation: This clone was engineered to express the complete ORF with an expression tag. Expression varies depending on the nature of the gene.

Components: The ORF clone is ion-exchange column purified and shipped in a 2D barcoded Matrix tube containing 10ug of transfection-ready, dried plasmid DNA (reconstitute with 100 ul of water).

- Reconstitution Method:
1. Centrifuge at 5,000xg for 5min.
  2. Carefully open the tube and add 100ul of sterile water to dissolve the DNA.
  3. Close the tube and incubate for 10 minutes at room temperature.
  4. Briefly vortex the tube and then do a quick spin (less than 5000xg) to concentrate the liquid at the bottom.
  5. Store the suspended plasmid at -20°C. The DNA is stable for at least one year from date of shipping when stored at -20°C.

RefSeq: [NM\\_024031.5](#)

RefSeq Size: 2154 bp

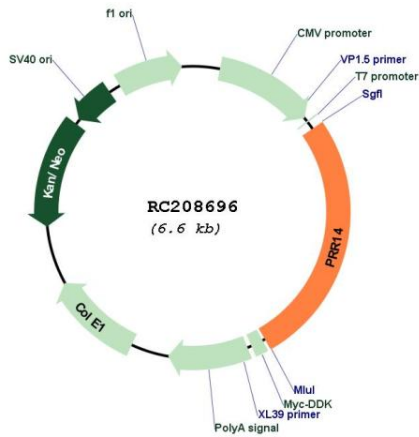
RefSeq ORF: 1758 bp

Locus ID: 78994

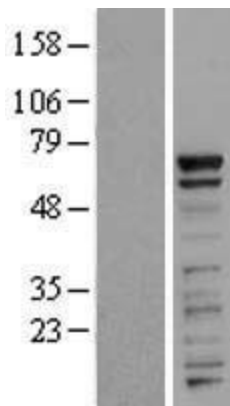
UniProt ID: [Q9BWN1](#)  
 Cytogenetics: 16p11.2  
 MW: 64.3 kDa

**Gene Summary:** The protein encoded by this gene tethers heterochromatin to the nuclear lamina scaffold by binding heterochromatin protein 1 (HP1) and the nuclear lamina. The tether is broken during mitosis and reforms quickly after mitosis, with the encoded protein first binding HP1 and then attaching to the nuclear lamina. This protein also has been shown to promote MyoD activity and skeletal myogenesis. Two transcript variants encoding the same protein have been found for this gene. [provided by RefSeq, Feb 2016]

**Product images:**



Circular map for RC208696



Western blot validation of overexpression lysate (Cat# [LY411408]) using anti-DDK antibody (Cat# [TA50011-100]). Left: Cell lysates from untransfected HEK293T cells; Right: Cell lysates from HEK293T cells transfected with RC208696 using transfection reagent MegaTran 2.0 (Cat# [TT210002]).