

Product datasheet for RC208695

CRELD2 (NM_024324) Human Tagged ORF Clone

Product data:

Product Type:	Expression Plasmids
Product Name:	CRELD2 (NM_024324) Human Tagged ORF Clone
Tag:	Myc-DDK
Symbol:	CRELD2
Mammalian Cell Selection:	Neomycin
Vector:	pCMV6-Entry (PS100001)
E. coli Selection:	Kanamycin (25 ug/mL)
ORF Nucleotide Sequence:	>RC208695 ORF sequence Red=Cloning site Blue=ORF Green=Tags(s)

TTTTGTAATACGACTCACTATAGGGCGGCCGGGAATTCGTCGACTGGATCCGGTACCGAGGAGATCTGCC
GCC**CGATCGCC**

ATGCGCTGCCGCGCCGGGCCGCGCTGGGGCTCCTGCCGTTCTGCTGCTGCTGCCGCCGCGCCGGAGG
CCGCCAAGAAGCCGACGCCCTGCCACCGGTGCCGGGGCTGGTGGACAAGTTAACCCAGGGGATGGTGGA
CACCGCAAAGAAGAACTTTGGCGCGGGAAACACGGCTTGGGAGGAAAAGACGCTGTCCAAGTACGAGTCC
AGCGAGATTCGCTGCTGGAGATCCTGGAGGGCTGTGCGAGAGCAGCGACTTCGAATGCAACCAGATGC
TAGAGGGCAGGAGGAGCACCTGGAGGCCTGGTGGCTGCAGTGAAGAGCGAATATCCTGACTTATTCGA
GTGGTTTTGTGTAAGACACTGAAAGTGTGCTGCTCTCCAGGAACCTACGGTCCCGACTGTCTCGCATGC
CAGGGCGGATCCCAGAGGCCCTGCAGCGGAATGGCCACTGCAGCGGAGATGGGAGCAGACAGGGCGACG
GGTCTGCCGGTGCCACATGGGGTACCAGGGCCCCTGTGCACTGACTGCATGGACGGCTACTTCAGCTC
GCTCCGGAACGAGACCCACAGCATCTGCACAGCCTGTGACGAGTCTGCAAGACGTGCTCGGGCCTGACC
AACAGAGACTGCGGCGAGTGTGAAGTGGCTGGTGTGACGAGGGCGCCTGTGTGGATGTGGACGAGT
GTGCGGCCGAGCCGCTCCCTGCAGCGCTGCGCAGTCTGTAAGAACGCCAACGGCTCTACACGTGCGA
AGAGTGTGACTCCAGCTGTGTGGCTGCACAGGGGAAGGCCAGGAACTGTAAGAGTGTATCTCTGGC
TACGCGAGGGAGCACGGACAGTGTGAGATGTGGACGAGTGCCTAGCAGAAAAAACCTGTGTGAGGA
AAAACGAAACTGCTACAATACTCCAGGGAGCTACGTCTGTGTGTCTGACGGCTTCGAAGGAACGGA
AGATGCCTGTGTGCCCGCCGAGAGGCTGAAGCCACAGAAGGAGAAGCCCGACACAGCTGCCCTCCCG
GAAGACCTG

ACGCGTACGCGGCCGCTCGAGCAGAACTCATCTCAGAAGAGGATCTGGCAGCAAATGATATCCTGGATT
ACAAGGATGACGACGATAAGGTTTAA



[View online »](#)

Protein Sequence: >RC208695 protein sequence
Red=Cloning site Green=Tags(s)

MRLPRRAALGLLPLLLLLPPAPEAAKKPTPCHRCRGLVDKFNQGMVDTAKKNFGGGNTAWEEKLSKYES
 SEIRLLEILEGLCESSDFECNQMLEAQEEHLEAWWLQLKSEYDPLFEWFCVKTLKVVCCSPGTYGPDCLAC
 QGGSQRPCSGNGHCSGDGSRQGDGSCRCHMGYQGFLCTDCMDGYFSSLRNETHSICTACDESKTCSGLT
 NRDCGECEVGVWLDGACVDVDECAAEPSPCAAQFCKNANGSYTCEECDSSCVGCTGEGPGNCKECSIG
 YAREHGQCADVDECALAEKTCVRKNENCYNTPGSYVVCVCPDGFEGTEDACVPPAEAEATEGESPTQLPSR
 EDL

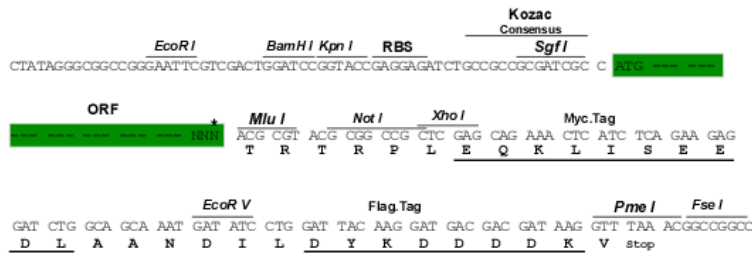
TRTRPLEQKLISEEDLAANDILDYKDDDDKV

Chromatograms: https://cdn.origene.com/chromatograms/mk6349_b08.zip

Restriction Sites: SgfI-MluI

Cloning Scheme:

Cloning sites used for ORF Shuttling:



* The last codon before the Stop codon of the ORF

ACCN: NM_024324

ORF Size: 1059 bp

OTI Disclaimer: The molecular sequence of this clone aligns with the gene accession number as a point of reference only. However, individual transcript sequences of the same gene can differ through naturally occurring variations (e.g. polymorphisms), each with its own valid existence. This clone is substantially in agreement with the reference, but a complete review of all prevailing variants is recommended prior to use. [More info](#)

OTI Annotation: This clone was engineered to express the complete ORF with an expression tag. Expression varies depending on the nature of the gene.

Components: The ORF clone is ion-exchange column purified and shipped in a 2D barcoded Matrix tube containing 10ug of transfection-ready, dried plasmid DNA (reconstitute with 100 ul of water).

Reconstitution Method:

1. Centrifuge at 5,000xg for 5min.
2. Carefully open the tube and add 100ul of sterile water to dissolve the DNA.
3. Close the tube and incubate for 10 minutes at room temperature.
4. Briefly vortex the tube and then do a quick spin (less than 5000xg) to concentrate the liquid at the bottom.
5. Store the suspended plasmid at -20°C. The DNA is stable for at least one year from date of shipping when stored at -20°C.

RefSeq: [NM_024324.2](#), [NP_077300.2](#)

RefSeq Size: 1449 bp

RefSeq ORF: 1062 bp

Locus ID: 79174

UniProt ID: [Q6UXH1](#)

Cytogenetics: 22q13.33

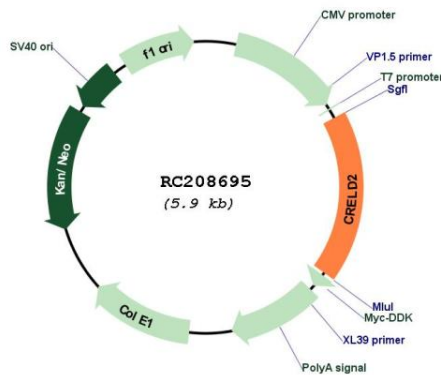
Domains: EGF_CA, EGF, EGF, FU

Protein Families: Druggable Genome, Secreted Protein

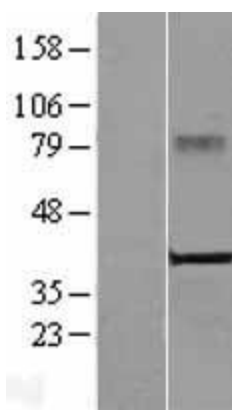
MW: 38.1 kDa

Gene Summary: May regulate transport of alpha4-beta2 neuronal acetylcholine receptor.[UniProtKB/Swiss-Prot Function]

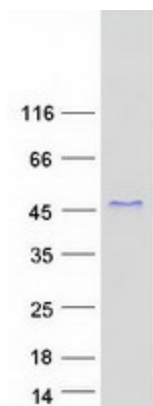
Product images:



Circular map for RC208695



Western blot validation of overexpression lysate (Cat# [LY411304]) using anti-DDK antibody (Cat# [TA50011-100]). Left: Cell lysates from untransfected HEK293T cells; Right: Cell lysates from HEK293T cells transfected with RC208695 using transfection reagent MegaTran 2.0 (Cat# [TT210002]).



Coomassie blue staining of purified CRELD2 protein (Cat# [TP308695]). The protein was produced from HEK293T cells transfected with CRELD2 cDNA clone (Cat# RC208695) using MegaTran 2.0 (Cat# [TT210002]).