

Product datasheet for **RC208691**

DLC1 (NM_182643) Human Tagged ORF Clone

Product data:

Product Type:	Expression Plasmids
Product Name:	DLC1 (NM_182643) Human Tagged ORF Clone
Tag:	Myc-DDK
Symbol:	DLC1
Synonyms:	ARHGAP7; HP; p122-RhoGAP; STARD12
Mammalian Cell Selection:	Neomycin
Vector:	pCMV6-Entry (PS100001)
E. coli Selection:	Kanamycin (25 ug/mL)
ORF Nucleotide Sequence:	>RC208691 ORF sequence Red=Cloning site Blue=ORF Green=Tags(s)

TTTTGTAATACGACTCACTATAGGGCGCCGGGAATTCGTCGACTGGATCCGGTACCGAGGAGATCTGCC
GCC**CGATCGCC**

ATGTCTGTAGCTATCAGAAAGAGAAGCTGGGAAGAACATGTGACCCACTGGATGGGACAGCCTTTAATT
CTGATGATCGTAACACAGCATGTCATCATGGACTAGTAGCTGACAGCTTGACAGCAAGTATGGAAAAAGA
TGCAACTCTAAATGTGGACCGCAAAGAGAAGTGTGTTTCACTACCTGACTGCTGTCATGGATCAGAGCTG
AGAGATTTTCTGGGAGCCAATGGTTCATCTTCAAAGGATGTGGACGAAAATGACAGCCATGAAGGTG
AAGATCAGTTTTCTTCTGGAAGCCAGCACAGAAACACTAGTGCATGTTTCTGATGAGGATAACAATGC
TGATTTATGCCTTACAGATGATAAACAGGTTTTAAATACCAAGGGCAGAAAACATCAGGCCAACATATG
ATCCAAGGAGCAGGCTCCTTAGAAAAGGCACTGCCCATCATACAAAGTAACCAAGTTTCTCTAACTCCT
GGGGAATAGCTGGTGAAGTGAATAGCACTGGTAAAAGAAAGTGGGAGAGAAAAGTACTGACTCTAT
AAGTAAAAGCCTGGAGCTTTGCAATGAAATAAGCTTAAGTAAAATAAAGATGCACCCAAAGTAAATGCA
GTGGATACTTTGAACGTGAAAGATATTGCACCTGAGAAACAATTGCTTAACTCTGCTGTAATTGCTCAGC
AACGAAGGAAACCTGACCCCTAAAGATGAAAATGAAAGAAGCACCTGCAATGTAGTACAAGATGAGTT
CTTGATACTCCTTGACAAAACAGAGGACTGCCATTATTAACAGATTTTGAAGCTGCCTTCTGCAG
CCTCCTTCTGCCCAATGGAATGTCAGCTGAAAATGGCCTGGAGAAGAGTGGTTTTTCAACATCAA
ACAAAAGTCCACCAAGGTCAAGGCAGAAGATGGCATGCAGTGTTTACAATTAAGGAGACCTGGCCAC
CCAGGAACCCACAGATAACCAAGTCAGACTTCGTAAGAGAAAGGAAATAAGAGAAGATCGAGATAGGGCG
CGGCTGGACTCCATGGTCTGCTGATTATGAACTGGACCAGCTTGATCAGGACATAGAAAATGCCTCA
GCACCAGCTCCTCCTCAGGCACACCAACCAACCTGCGGCGGCACGTTCTGATCTGGAATCAGGATC
TGAAAGTGGAGCAGATACCATTTAGTAAATCAGACACGAGTAAATTTGTCTTCTGACACTGAGTCCACG
GACCTCCATCTTCCACTCCAGTAGCCAATTTGGAACCAACCAAGACTACGGCTATTCAAGGTATTT
CAGAGAAGGAAAAGGCTGAAATGAAGCCAAGGAAGCTTGTGATTGGCTACGGGCAACTGGTTTCCCCCA
GTATGCACAGCTTATGAAGATTTCTGTTCCCATCGATATTTCTTGGTCAAGAGAGAGCATGATTTT



[View online »](#)

TTGGACAGAGATGCCATTGAGGCTCTATGCAGGCGTCTAAATACTTTAAACAAATGTGCGGTGATGAAGC
TAGAAATTAGTCCTCATCGGAAACGAAGTGACGATTGACAGCAGGATGAGCCTTGTGCCATCAGTGGCAA
ATGGACTTTCAAAGGGACAGCAAGAGGTGGTCCCGGCTTGAAGAGTTTGTATGTCTTTCTCCAAAAACA
GACCTGGTCCCTGGGTCCTCAGCAGACTCCCACCCGAAGGACGGCCCCAGCCCCGGAGGCACGCTGATGG
ACCTCAGCGAGCGCCAGGAGGTGTCTCCGTCCGACGCTCAGCAGCACTGGCAGCCTCCCAGCCACGC
TCCCCCAGCGAGGATGCTGCCACCCCCGACTAACTCCGTATCAGCGTTTGTCTCCAGCAACTTG
GCAGGCAATGACGACTCTTTCGGCAGCCTGCCCTCTCCAAGGAACTGTCAGCTCAGCTTCAGCTATGA
AAGGCCACGAAAAAAGTCCAAGTCCAAGACGCGCAGTCTGCTGAAACGGATGGAGAGCCTGAAGCTCAA
GAGCTCCCATCACAGCAAGCACAAAGCGCCCTCAAAGCTGGGTTGATCATCAGCGGGCCCATCTTGCAA
GAGGGGATGGATGAGGAGAAGCTGAAGCAGCTCAACTGCGTGGAGATCTCCGCCCTCAATGGCAACCGCA
TCAACGTCCCATGGTACGAAAGAGGAGCGTTTCAAACCTCACGCAGACCAGCAGCAGCAGCAGCCAGTC
GGAGACCAGCAGCGCGTCAACAGCCAGCCCTGTTACGAGGACCCGGAGCCTCAGTGCGTGCAACAAG
CGGGTGGCATGTACTTAGAGGGCTTCGATCCTTTCAATCAGTCAACATTAACAACGTGGTGGAGCAGA
ACTTTAAGAACCGGAGAGCTACCCGGAGGACAGGTGTTCTACATCCCTGAAGATCACAAGCCTGGCAC
TTTCCCCAAAGCTCTACCAATGGCAGTTTCTCCCCTCGGGGAATAACGGCTCTGTGAAGTGGAGGACG
GGAAGCTTCCACGGCCCTGGCCACATCAGCCTCAGGAGGAAAAACAGTAGCGACGCCCAAGGAACTGA
AGAGACGCAATTCTCCAGCTCCATGAGCAGCCGCTGAGCATCTACGACAACGTGCCGGCTCCATCCT
CTACTCCAGTTGAGGGGACCTGGCGGATCTGGAGAACGAGGACATCTTCCCCGAGCTGGACGACATCCTC
TACCACGTGAAGGGGATGACGCGGATAGTCAATCAGTGGTGGGAGAGTTTCTGATGAGGGAGATTCGG
ACTCAGCCCTGGACTCGGTCTCTCCCTGCCCGTCTCTCCAAAACAGATACACCTGGATGTGGACAACGA
CCGAACCACACCCAGCGACCTGGACAGCACAGGCAACTCCCTGAATGAACCGGAAGGCCCTCCGAGATC
CCGAAAGAAGGGATTCTGGGGTGGGGCTTCCCTAACAGGTCCAACAGGCACCGACTGAGATGGCACA
GTTTCCAGAGCTCACATCGGCCAAGCCTCAACTGTATCACTACAGATTAAGTCCAGTCTGTGGCCCA
GATGAACCTGCTGCAGAAATACTCACTCCTAAAGCTAACGGCCCTGCTGGAGAAAATACACACCTTCTAAC
AAGCATGGTTTTAGTGGGCCGTGCCAAGTTCATGAAGAGGATCAAGGTTCCAGACTACAAGGACCGGA
GTGTGTTTGGGGTCCCACTGACGGTCAACGTGCAGCGCACAGGACAACCGTTGCCTCAGAGCATCCAGCA
GGCCATGCGATACCTCCGGAACCATGTTTGGATCAGGTTGGGCTCTTCCAGAAAATCGGGGGTCAAGTCC
CGGATTCAGGCTCTGCGCCAGATGAATGAAGGTGCCATAGACTGTGTCAACTACGAAGGACAGTCTGCTT
ATGACGTGGCAGACATGCTGAAGCAGTATTTTCGAGATCTTCTGAGCCACTAATGACGAACAACTCTC
GGAAACCTTTCTACAGATCTACCAATATGTGCCAAGGACCAGCGCTGCAGGCCATCAAGGCTGCCATC
ATGCTGCTGCCTGACGAGAACCAGGAGGTTCTGCAGACCTGCTTTATTTCTGAGCGATGTCACAGCAG
CCGTAAGAAAACAGATGACCCCAACCAACCTGGCCGTGTGCTTAGCGCCTTCCCTCTCCATCTCAA
CACCTGAAGAGAGAGAATTCCTCTCCAGGGTAAATGCAAGAAAAACAAAGTTTGGGCAACCCAGATCAG
AAAGATTTGAATGAAAACCTAGCTGCCACTCAAGGGCTGGCCATATGATCGCCGAGTGCAAGAAGCTTT
TCCAGGTTCCCGAGGAAATGAGCCGATGTGTAATTCCTATACCGAACAAGAGCTGAAGCCCTCACTCT
GGAAGCACTCGGGCACCTGGGTAATGATGACTCAGCTGACTACCAACACTTCTCCAGGACTGTGTGGAT
GGCCTGTTTAAAGAAGTCAAAGAGAAGTTTAAAGGCTGGGTCAGTACTCCACTTCGGAGCAGGCTGAGC
TGTCCTATAAGAAGGTGAGCGAAGGACCCCTCTGAGGCTTTGGAGGTCAGTATTGAAGTCCCTGCTGT
GCCAGAGGAAATCTTAAAGCGCCTACTTAAAGAACAGCACCTCTGGGATGTAGACCTGTTGGATTCAAAA
GTGATCGAAATCTGGACAGCCAACTGAAATTTACCAGTATGTCCAAAACAGTATGGCACCTCATCCTG
CTCGAGACTACGTTGTTTAAAGAACCTGGAGGACTAATTTACCCAAAGGAGCCTGTGCCCTTTACTAAC
CTCTGTGGATCACGATCGCGCACCTGTGGTGGTGTGAGGGTAAATGTGCTCTTGTCCAGGTATTTGATT
GAACCCTGTGGGCCAGGAAAATCCAAACTCACCTACATGTGCAGAGTTGACTTAAGGGGCCACATGCCAG
AATGGTACACAAAATCTTTTGGACATTTGTGTGCAGCTGAAGTTGTAAAGATCCGGGATTCCTCAGTAA
CCAGAACACTGAAACCAAGACACCAAATCTAGG

ACGCGTACGCGGCCGCTCGAGCAGAACTCATCTCAGAAGAGGATCTGGCAGCAATGATATCCTGGATT
ACAAGGATGACGACGATAAGGTTTAA

Protein Sequence:

>RC208691 protein sequence
 Red=Cloning site Green=Tags(s)

```

MSVAIRKRSWEEHVTHWMGQPFNSDDRNTACHHGLVADSLQASMEKDATLNVDRKEKCVSLPDCCHGSEL
RDFPGRPMGHL SKDVDENDSHEGEDQFLSLEASTETLVHVSDEDNADLCLTDDKQVLNTQGOKTSGQHM
IQGAGSLEKALPIIQSNQVSSNSWGIAGETELALVKEGGERKVTDSISKSELCNEISLSEIKDAPKVNA
VDTLNVKDIAPKQLLNSAVIAQRRKDPDPKDENERSTCNVVDQDEFDLPCTNRGLPLLKTDGFSCLLQ
PPSCPNGMSAENGLEKSGFSQHQNKSPPKVKAEDGMQCLQLKETLATQEPDQVRLRKRKEIREDRDRA
RLDSMVLILIMKLDQLDQDIENALSTSSSPSGTPTNLRRHVPDLESGSESGADTISVNQTRVNLSSDTEST
DLPSSPTVANSQTKPKTTAIQGISEKEKAEIEAKEACDWLRATGFPQYAQLYEDFLFPIDISLVKREHDF
LDRDAIEALCRRNLNLNCAVMKLEISPHRKRSDSDSEDEPCAISGKWFQRDSKRWSRLEEFDFVSPKQ
DLVPGSPDDSHPKDGPSPGGTMDL SERQEVSSVRSLSSTGSLPSHAPPSEDAATPRTNSVIVSVCSSNL
AGNDDSFGLSPKELSSF SFSMKGHEKTA KSKTRSL LKRMESLKLKSSHHSKHKAPSKLGLIISGPILQ
EGMDEEKLKQLNCVEISALNGRINVPVVRKRSVSNSTQTS SSSSQSETSSAVSTSPVTRTRLSACNK
RVGMYLEGFDPFNQSTFNNVVEQNFKNRESYPEDTVFYIPEDHKPGTFPKAL TNGSFSPSGNNGSVNWRT
GSFHGPGHISLRRENSDSPKELKRRNSSSSMSRLSIYDNPVGSILYSSGDLADLENE DIFPELDDIIL
YHVKGMQRIVNQWSEKFSDEGSDSALDSVSPCSPSPKQIHLDVDNDRTPSDL DSTGNLSNEPEEPSEI
PERRDSGVGASL TRSNRHLRWHSFQSSHRPSLNSVSLQINCQSAVQM NLLQKYSLLKL TALLEKYTPSN
KHGFSWAVPKFMKRIKVPDYKDRSVFVGPLTVNVQRTGQPLPQSIQQAMRYLRNHCLDQVGLFRKSGVKS
RIQALRQMNEGAIDCVNYEGQSAYDVADMLKQYFRDLPEPLMTNKLSETFLQIYQYVPKDQRLQAIKAAI
MLLPDENREVLQTL LYFLSDVTA AVKENQMTPTNLAVCLAPSLFHLNLT LKRENSSPRVMQRKQSLGKPDQ
KDLNENLAATQGLAHMIAECKKLFQVPEEMSRCRNSYTEQELKPLTLEALGHLGNDD SADYQHFLQDCVD
GLFKEVKEKFKGWVSYSTSEQAELSYKKVSEGPLRLRWSVIEVPAVPEEILKRLLKEQHLWDV DLDLDSK
VIEILDSQTEIYQYVQNSMAPHPARDYVLRTRWRTNLPKGACALLLTSVDH DRAPVVGVRVNVLLSRYLI
EPCGPGKSKLTYMCRVDLRGHMPEWYTKSFGHLCAA EVVKIRDSFSNQNTETKDTKSR
    
```

TRTRPLEQKLISEEDLAANDILDYKDDDDKV

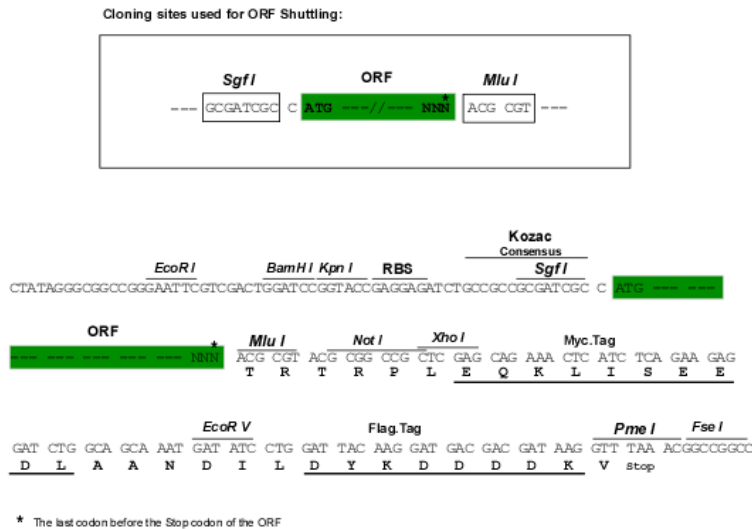
Chromatograms:

https://cdn.origene.com/chromatograms/mk6716_e05.zip

Restriction Sites:

SgfI-MluI

Cloning Scheme:

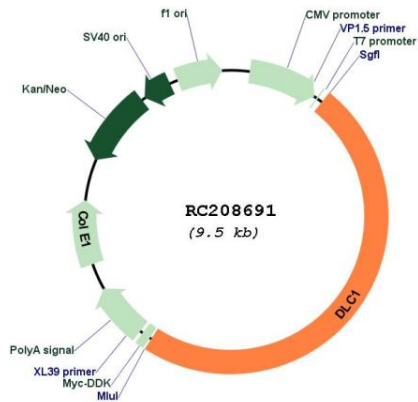


ACCN:

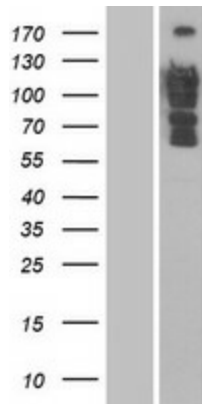
NM_182643

ORF Size:	4584 bp
OTI Disclaimer:	The molecular sequence of this clone aligns with the gene accession number as a point of reference only. However, individual transcript sequences of the same gene can differ through naturally occurring variations (e.g. polymorphisms), each with its own valid existence. This clone is substantially in agreement with the reference, but a complete review of all prevailing variants is recommended prior to use. More info
OTI Annotation:	This clone was engineered to express the complete ORF with an expression tag. Expression varies depending on the nature of the gene.
Components:	The ORF clone is ion-exchange column purified and shipped in a 2D barcoded Matrix tube containing 10ug of transfection-ready, dried plasmid DNA (reconstitute with 100 ul of water).
Reconstitution Method:	<ol style="list-style-type: none">1. Centrifuge at 5,000xg for 5min.2. Carefully open the tube and add 100ul of sterile water to dissolve the DNA.3. Close the tube and incubate for 10 minutes at room temperature.4. Briefly vortex the tube and then do a quick spin (less than 5000xg) to concentrate the liquid at the bottom.5. Store the suspended plasmid at -20°C. The DNA is stable for at least one year from date of shipping when stored at -20°C.
RefSeq:	NM_182643.3
RefSeq Size:	7479 bp
RefSeq ORF:	4587 bp
Locus ID:	10395
UniProt ID:	Q96QB1
Cytogenetics:	8p22
MW:	170.6 kDa
Gene Summary:	This gene encodes a GTPase-activating protein (GAP) that is a member of the rhoGAP family of proteins which play a role in the regulation of small GTP-binding proteins. GAP family proteins participate in signaling pathways that regulate cell processes involved in cytoskeletal changes. This gene functions as a tumor suppressor gene in a number of common cancers, including prostate, lung, colorectal, and breast cancers. Multiple transcript variants due to alternative promoters and alternative splicing have been found for this gene.[provided by RefSeq, Apr 2010]

Product images:



Circular map for RC208691



Western blot validation of overexpression lysate (Cat# [LY405427]) using anti-DDK antibody (Cat# [TA50011-100]). Left: Cell lysates from untransfected HEK293T cells; Right: Cell lysates from HEK293T cells transfected with RC208691 using transfection reagent MegaTran 2.0 (Cat# [TT210002]).