

Product datasheet for **RC208688L2V**

EPB41L5 (NM_020909) Human Tagged ORF Clone Lentiviral Particle

Product data:

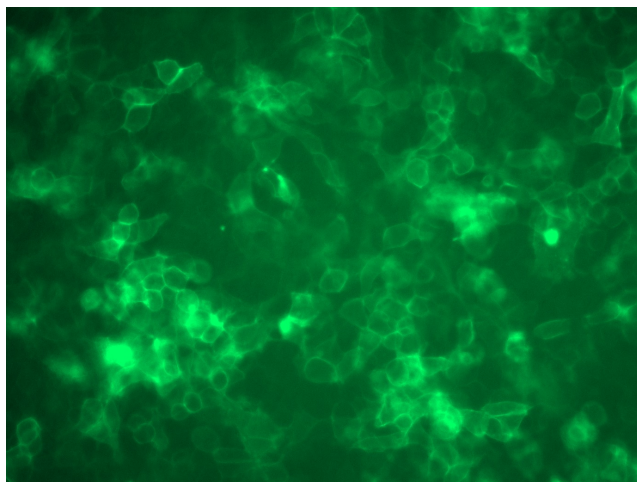
Product Type:	Lentiviral Particles
Product Name:	EPB41L5 (NM_020909) Human Tagged ORF Clone Lentiviral Particle
Symbol:	EPB41L5
Synonyms:	BE37; LULU; LULU1; YMO1; YRT
Mammalian Cell Selection:	None
Vector:	pLenti-C-mGFP (PS100071)
Tag:	mGFP
ACCN:	NM_020909
ORF Size:	2199 bp
ORF Nucleotide Sequence:	The ORF insert of this clone is exactly the same as(RC208688).
OTI Disclaimer:	The molecular sequence of this clone aligns with the gene accession number as a point of reference only. However, individual transcript sequences of the same gene can differ through naturally occurring variations (e.g. polymorphisms), each with its own valid existence. This clone is substantially in agreement with the reference, but a complete review of all prevailing variants is recommended prior to use. More info
OTI Annotation:	This clone was engineered to express the complete ORF with an expression tag. Expression varies depending on the nature of the gene.
RefSeq:	NM_020909.2
RefSeq Size:	6621 bp
RefSeq ORF:	2202 bp
Locus ID:	57669
UniProt ID:	Q9HCM4
Cytogenetics:	2q14.2
Domains:	B41
MW:	81.9 kDa



[View online »](#)

Gene Summary: May contribute to the correct positioning of tight junctions during the establishment of polarity in epithelial cells.[UniProtKB/Swiss-Prot Function]

Product images:



[RC208688L2] was used to prepare Lentiviral particles using [TR30037] packaging kit. HEK293T cells were transduced with RC208688L2V particle to overexpress human EPB41L5-mGFP fusion protein.