

Product datasheet for **RC208684**

RPAIN (NM_001033002) Human Tagged ORF Clone

Product data:

Product Type:	Expression Plasmids
Product Name:	RPAIN (NM_001033002) Human Tagged ORF Clone
Tag:	Myc-DDK
Symbol:	RPAIN
Synonyms:	HRIP; RIP
Mammalian Cell Selection:	Neomycin
Vector:	pCMV6-Entry (PS100001)
E. coli Selection:	Kanamycin (25 ug/mL)
ORF Nucleotide Sequence:	>RC208684 ORF sequence Red=Cloning site Blue=ORF Green=Tags(s)

TTTTGTAATACGACTCACTATAGGGCGGCCGGAATTCGTCGACTGGATCCGGTACCGAGGAGATCTGCC
GCC**CGATCGCC**

ATGGCGGAGTCGTTGAGGTCTCCGCGCCGCTCCCTGTACAACTGGTGGGCTCGCCGCTTGAAAGAGG
CTTTCGGCAGAGATGCCTGGAGAGAATGAGAAACAGCCGGGACAGGCTCCTAACAGGTACCGCCAGGC
TGAAGCAGTGGCCAGGAATTCTCAGAACAGCTTTCTAGTTCAAGAGGTGATGGAAGAAGAGTGAAT
GCTTTCAGTCAGTGGAGAATTGTCCAGAAGACTTGGCTCAGTTGGAGGAGCTGATAGACATGGCTGTGC
TGGAGGAAATTAACAGGAGCTGATCAAGCAAGAGCAGTCCATCATCAGCGAGTATGAGAAGAGCTTGCA
GTTTGATGAAAAGTGTCTCAGCATCATGCTGGCTGAGTGGGAGGCAAACCACTCATCTGTCCTGTATGT
ACAAAGTACAACCTGAGAATCACAAGCGGTGTGGTGGTGTGTCAGTGTGGCCTGTCCATCCCATCTCATT
CTTCTGAGTTGACAGAGCAGAAGCTTCGTGCCTGTTTAGAGGGTAGTATAAATGAGCACAGTGCACATTG
TCCCCACACACTGAATTTTCAGTCACTGGAGGAACAGAAGAAAAGTCCAGTCTTCTCATGAGCTGTCTG
GCCTGTGATACTTGGGCTGTGATCCTC

ACGCGTACGCGGCGCTCGAGCAGAACTCATCTCAGAAGAGGATCTGGCAGCAAATGATATCCTGGATT
ACAAGGATGACGACGATAAGGTTTAA



[View online »](#)

Protein Sequence: >RC208684 protein sequence
Red=Cloning site Green=Tags(s)

MAESLRSPRRSL YKLVGSPWPKEAFRQRCLERMNRSDRLLNRYRQAGSSGPGNSQNSFLVQEVMEEEWN
 ALQSVENCPEDLAQLEELIDMAVLEEIQQELIKQEQSIISEYEKSLQFDEKCLSIMLAEWANPLICPVC
 TKYNLRITSGVVVCQGLSIPSHSELTEQKLRACLEGSINEHSAHCPTPEFSVTGGTEEKSSLLMSCL
 ACDTWAVIL

TRTRPLEQKLISEEDLAANDILDYKDDDDKV

Chromatograms: https://cdn.origene.com/chromatograms/mk6361_h10.zip

Restriction Sites: SgfI-MluI

Cloning Scheme:



ACCN: NM_001033002

ORF Size: 657 bp

OTI Disclaimer: The molecular sequence of this clone aligns with the gene accession number as a point of reference only. However, individual transcript sequences of the same gene can differ through naturally occurring variations (e.g. polymorphisms), each with its own valid existence. This clone is substantially in agreement with the reference, but a complete review of all prevailing variants is recommended prior to use. [More info](#)

OTI Annotation: This clone was engineered to express the complete ORF with an expression tag. Expression varies depending on the nature of the gene.

Components: The ORF clone is ion-exchange column purified and shipped in a 2D barcoded Matrix tube containing 10ug of transfection-ready, dried plasmid DNA (reconstitute with 100 ul of water).

Reconstitution Method:

1. Centrifuge at 5,000xg for 5min.
2. Carefully open the tube and add 100ul of sterile water to dissolve the DNA.
3. Close the tube and incubate for 10 minutes at room temperature.
4. Briefly vortex the tube and then do a quick spin (less than 5000xg) to concentrate the liquid at the bottom.
5. Store the suspended plasmid at -20°C. The DNA is stable for at least one year from date of shipping when stored at -20°C.

RefSeq: [NM_001033002.3](#)

RefSeq Size: 1679 bp

RefSeq ORF: 660 bp

Locus ID: 84268

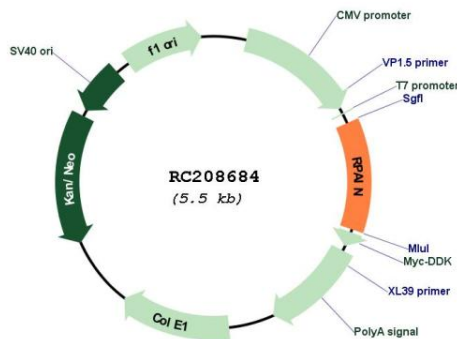
UniProt ID: [Q86UA6](#)

Cytogenetics: 17p13.2

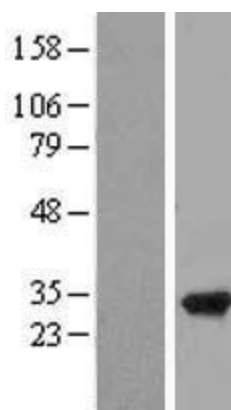
MW: 24.8 kDa

Gene Summary: Mediates the import of RPA complex into the nucleus, possibly via some interaction with importin beta. Isoform 2 is sumoylated and mediates the localization of RPA complex into the PML body of the nucleus, thereby participating in RPA function in DNA metabolism. [UniProtKB/Swiss-Prot Function]

Product images:



Circular map for RC208684



Western blot validation of overexpression lysate (Cat# [LY422337]) using anti-DDK antibody (Cat# [TA50011-100]). Left: Cell lysates from untransfected HEK293T cells; Right: Cell lysates from HEK293T cells transfected with RC208684 using transfection reagent MegaTran 2.0 (Cat# [TT210002]).