

Product datasheet for **RC208681**

ZNF394 (NM_032164) Human Tagged ORF Clone

Product data:

Product Type:	Expression Plasmids
Product Name:	ZNF394 (NM_032164) Human Tagged ORF Clone
Tag:	Myc-DDK
Symbol:	ZNF394
Synonyms:	ZKSCAN14; ZSCAN46
Mammalian Cell Selection:	Neomycin
Vector:	pCMV6-Entry (PS100001)
E. coli Selection:	Kanamycin (25 ug/mL)



[View online »](#)

ORF Nucleotide Sequence:

>RC208681 ORF sequence
 Red=Cloning site Blue=ORF Green=Tags(s)

TTTTGTAATACGACTCACTATAGGGCGGCCGGAATTCGTCGACTGGATCCGGTACCGAGGAGATCTGCC
 GCC**CGGATCGCC**

ATGAATCCAGCTTGACCGCCAGAGGCGCGGAGTGACGCCAGTTGGGACCCTGGGTGATGGCTGCGA
 GGTCCAAGGACGCGCGCGCTCCCAACGCGACGGACTTTTGCCCGTGAAAGTGGAGGAAGACTCACCCGG
 AAGTTGGGAGCCCAACTATCCCGCGCTTCGCGGACCCCGAAACTTCTCGACTGCACTTTAGGCAGCTG
 CGTTACCAGGAGGTGGCTGGACCGAAGAGGCGCTGAGCCGCTCCGAGAAGTCTGTCGTCGGTGGCTGA
 GACCCGAGCTGCTCTCAAGGAGCAGATCCTGGAGCTGCTGGTGTGGAGCAGTTCTCACCATCTGCC
 CGAGGAGCTTCAAGCCTGGGTGCGAGAGCACTGCCAGAGAGCGGGGAGGAGCGGTGGCCGTGGTGGC
 GCTCTGCAGCGAGCGCTCGATGGAACCTCATCCAGGGGATGGTACTTTCGAGGACACGGCTGTGTCTC
 TAACCTGGGAGGAGTGGGAGCGCTGGACCCAGCAGGAGGACTTCTGCAGAGAGAGTGCAGAGAAGGA
 TTCGGGAGCACAGTTCGCCGAGTTTGGAAAGCAGAGTGAGAAACAAAGAGTTGATTCCAATGCAACAA
 ATTTTAGAAGAAGCGGAGCCACAGGGGCAACTACAAGAAGCGTTCAGGGGAAGCGCCCTGTTTTCTA
 AGTGTGGCAGTACCCATGAGGACAGGGTGGAAAAGCAGTCCGGAGACCCCTTGCCCTGAAACTGAAAA
 TTCTCCTGAAGCAGAAGGACTCAACAGCATCTCAGATGTCAATAAGAATGGTTCCATAGAAGGGGAAGC
 TCTAAAAATAATGAATTGCAGAACAGTCCAGGTGTTCCAACCTTGTCTATGTCAGCACATCCCGAAAAG
 CAGAGAGGCCACTGACAGTGGAGAACCGGGAACAAGTCAAGCAAAGTTTCCACATGGTGACGTGGCA
 CGTGCTGAAACCTCACAAGTCTGACAGTGGAGACAGTTTCCATCATTCCAGCCTTTTGGAGCCAGAGG
 CAGCTCCATGAAGAAAGACCTTATAAATGTGGTAACTGTGGGAAGAGTTTCAAACAACGCTTGACCTCT
 TTAGACACAGAGAATCCACACAGGTGAGAAACCTATGGCTGCCAAGAATGTGGGAAAAGCTTCAGCCA
 GAGTGCTGCCCTGACCAAGCACAGAGGACACACAGGCGAGAAGCCGTACACCTGTCTGAAATGTGGG
 GAGCGCTTCAGGAGAATTCACACCTAAATCGTCATCAAAGTACCCACAGTAGAGACAAACATTTTAAAT
 GTGAGGAATGCGGGAAACCTGTCATATTTCCAACCTTTTGTAGACATCAGAGACTACATAAAGGGGAAAG
 ACCCTATAAGTGTGAAGAATGCGAGAAGAGCTTCAAACAGCGCTCTGACCTCTTAAACACCACAGAATC
 CACTGGGAGAAAGCCCTATGGATGTTCCGTCTGTGGGAAACGCTTCAATCAGAGTGAACCCCTCATT
 AACACCAGAGAATTCACACTGGGAAAAGCCTTACAAATGTCTTGAATGTGGGAAAGATTTAGACAAAG
 TACACACCTTATCCGACACCAAAGAATTCATCAAATAAAGTGTGTGGCTGGGCGTGGTGGCTCACGC
 CTA

ACGCGTACGCGGCGCTCGAGCAGAACTCATCTCAGAAGAGGATCTGGCAGCAAATGATATCCTGGATT
 ACAAGGATGACGACGATAAGGTTTAA

Protein Sequence:

>RC208681 protein sequence
 Red=Cloning site Green=Tags(s)

MNSSLTAQRRGSDAELGPWVMAARSKDAAPSQRDGLLPVKVEEDSPGSWEPNYPASPDPETSRLHFRQL
 RYQEVAGPEEALSRLRELRRWLRPPELLSKEQILELLVLEQFLTILPEELQAWVREHCPESGEEAVAVVR
 ALQRALDGTSSQGMVTFEDTAVSLTWEWERLDPARRDFCRESAQKDSGSTVPPSLESRVENKELIPMQQ
 ILEEAEPQGLQEAFAQKRPLFSKCGSTHEDRVEKQSGDPLPLKLENSPEAEGLNSISDVNKNKGSIEGED
 SKNNELQNSARCSNLVLCQHIPKAERPTDSEEHGNKCKQSFHMVTVHVLKPHKSDSGDSFHSSLFETQR
 QLHEERPYPKCGNCGKSFQKRSDFRHRQRIHTGEKPYGCQECGKSFQSAALTKHQRTHTEKPYTCLKCG
 ERFRQNSHLNRHQSTHSRDKHFKCEECGETCHISNLFRHQRLHKGEPYKCEECEKSFQKRSDFKHHRH
 HTGEKPYGCSVCKRFNQSATLIKHQRIHTGEKPYKLECGERFRQSTHLIRHQRIHQNKVLSAGRGGSR
 L

TRTRPLEQKLISEEDLAANDILDYKDDDDKV

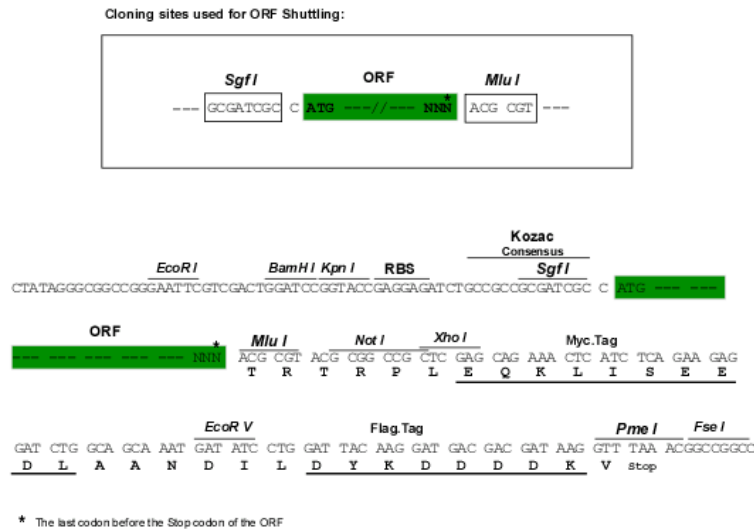
Chromatograms:

https://cdn.origene.com/chromatograms/mk6198_f03.zip

Restriction Sites:

Sgfl-Mlul

Cloning Scheme:



ACCN: NM_032164

ORF Size: 1683 bp

OTI Disclaimer: The molecular sequence of this clone aligns with the gene accession number as a point of reference only. However, individual transcript sequences of the same gene can differ through naturally occurring variations (e.g. polymorphisms), each with its own valid existence. This clone is substantially in agreement with the reference, but a complete review of all prevailing variants is recommended prior to use. [More info](#)

OTI Annotation: This clone was engineered to express the complete ORF with an expression tag. Expression varies depending on the nature of the gene.

Components: The ORF clone is ion-exchange column purified and shipped in a 2D barcoded Matrix tube containing 10ug of transfection-ready, dried plasmid DNA (reconstitute with 100 ul of water).

Reconstitution Method:

1. Centrifuge at 5,000xg for 5min.
2. Carefully open the tube and add 100ul of sterile water to dissolve the DNA.
3. Close the tube and incubate for 10 minutes at room temperature.
4. Briefly vortex the tube and then do a quick spin (less than 5000xg) to concentrate the liquid at the bottom.
5. Store the suspended plasmid at -20°C. The DNA is stable for at least one year from date of shipping when stored at -20°C.

RefSeq: [NM_032164.4](#)

RefSeq Size: 2259 bp

RefSeq ORF: 1686 bp

Locus ID: 84124

UniProt ID: [Q53GI3](#)

Cytogenetics: 7q22.1

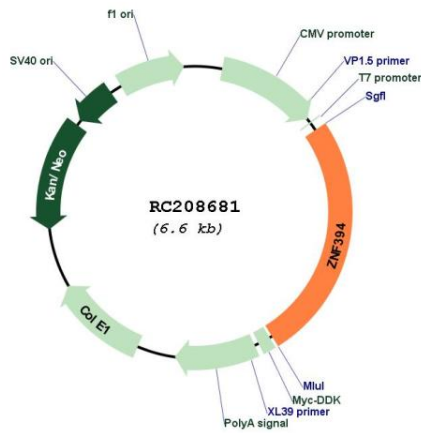
Domains: KRAB, LER, zf-C2H2

Protein Families: Transcription Factors

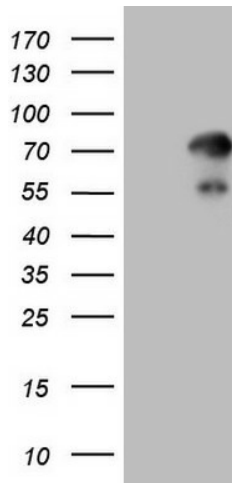
MW: 64.3 kDa

Gene Summary: The protein encoded by this gene is a zinc finger protein that inhibits the transcription of mitogen-activated protein kinase signaling pathways. The encoded protein may be involved in cardiac function. [provided by RefSeq, Sep 2016]

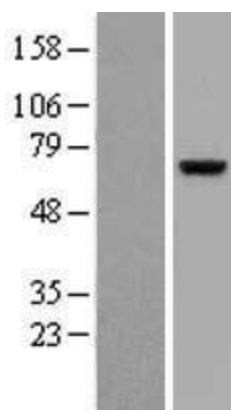
Product images:



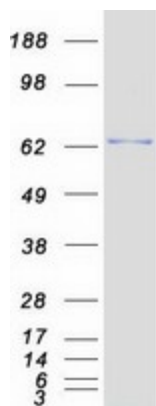
Circular map for RC208681



HEK293T cells were transfected with the pCMV6-ENTRY control (Cat# [PS100001], Left lane) or pCMV6-ENTRY ZNF394 (Cat# RC208681, Right lane) cDNA for 48 hrs and lysed. Equivalent amounts of cell lysates (5 ug per lane) were separated by SDS-PAGE and immunoblotted with anti-ZNF394 (Cat# [TA808930])(1:2000). Positive lysates [LY403147] (100ug) and [LC403147] (20ug) can be purchased separately from OriGene.



Western blot validation of overexpression lysate (Cat# [LY403147]) using anti-DDK antibody (Cat# [TA50011-100]). Left: Cell lysates from untransfected HEK293T cells; Right: Cell lysates from HEK293T cells transfected with RC208681 using transfection reagent MegaTran 2.0 (Cat# [TT210002]).



Coomassie blue staining of purified ZNF394 protein (Cat# [TP308681]). The protein was produced from HEK293T cells transfected with ZNF394 cDNA clone (Cat# RC208681) using MegaTran 2.0 (Cat# [TT210002]).