

Product datasheet for RC208672

SERTAD3 (NM_203344) Human Tagged ORF Clone

Product data:

Product Type: Expression Plasmids
Product Name: SERTAD3 (NM_203344) Human Tagged ORF Clone
Tag: Myc-DDK
Symbol: SERTAD3
Synonyms: RBT1
Mammalian Cell Selection: Neomycin
Vector: pCMV6-Entry (PS100001)
E. coli Selection: Kanamycin (25 ug/mL)
ORF Nucleotide Sequence: >RC208672 ORF sequence
 Red=Cloning site Blue=ORF Green=Tags(s)

TTTTGTAATACGACTCACTATAGGGCGGCCGGAATTCGTCGACTGGATCCGGTACCGAGGAGATCTGCC
 GCC**CGATCGCC**

ATGGTGGGAGGCTTGAAGAGGAAACACTCTGATTTGGAAGAGGAGGAGGAGGTGGGAGTGGAGTCCAG
 CAGGCCTTCAGAGCTACCAGCAAGCCCTGCTCCGCATCTCCCTAGACAAAGTCCAGCGCAGCCTGGGCC
 CCGAGCACCCAGCCTCCGAGGCATGTCTCATCCATAACACCCTCCAACAGCTGCAGGCTGCATTTCG
 CTGGCTCCGCCCCTGCCCTGCCCCCGAGCCCCTCTTCTGGGCGAGGAGGATTTCTCCCTGTCAGCCA
 CCATTGGCTCTATCCTCAGGGAGCTGGACACCTCCATGGATGGGACTGAGCCCCCTCAGAATCCAGTGAC
 TCCCTTGGCCTCCAGAATGAAGTGCCACCCAGCCTGATCCAGTCTTCTAGAAGCTCTGAGCTCCCGG
 TACTTGGGGACTCTGGCCTGGATGACTTCTTTCTGGACATTGACACATCTGCGGTAGAAAAGGAGCCTG
 CACGGGCCACCAGAGCCTCCTCACACCTCTTCTGTGCCCCAGGTTCTTGGGAGTGAATGAAGTGA
 TCACATCATGAAATCATTCTGGGGTCC

ACGCGTACGCGGCCGCTCGAGCAGAACTCATCTCAGAAGAGGATCTGGCAGCAATGATATCCTGGATT
 ACAAGGATGACGACGATAAGGTTTAA

Protein Sequence: >RC208672 protein sequence
 Red=Cloning site Green=Tags(s)

MVGGLKRKHSDEEEERWESPAGLQSYQQALLRISLDKVRSLGPRAPSLRRHVLIHNTLQQLQAALR
 LAPAPALPPEPLFLGEEDFSLSATIGSILRELDTSMDGTEPPQNPVTPGLQNEVPPQDPVFLEALSSR
 YLGDSDLDDFFLDIDTSAVEKEPARAPPEPPHNLFCAPGSWEWNELDHIMEIILGS

TRTRPLEQKLISEEDLAANDILDYKDDDDKV



[View online »](#)

Chromatograms: https://cdn.origene.com/chromatograms/mk6362_h10.zip

Restriction Sites: SgfI-MluI

Cloning Scheme:



ACCN: NM_203344

ORF Size: 588 bp

OTI Disclaimer: The molecular sequence of this clone aligns with the gene accession number as a point of reference only. However, individual transcript sequences of the same gene can differ through naturally occurring variations (e.g. polymorphisms), each with its own valid existence. This clone is substantially in agreement with the reference, but a complete review of all prevailing variants is recommended prior to use. [More info](#)

OTI Annotation: This clone was engineered to express the complete ORF with an expression tag. Expression varies depending on the nature of the gene.

Components: The ORF clone is ion-exchange column purified and shipped in a 2D barcoded Matrix tube containing 10ug of transfection-ready, dried plasmid DNA (reconstitute with 100 ul of water).

Reconstitution Method:

1. Centrifuge at 5,000xg for 5min.
2. Carefully open the tube and add 100ul of sterile water to dissolve the DNA.
3. Close the tube and incubate for 10 minutes at room temperature.
4. Briefly vortex the tube and then do a quick spin (less than 5000xg) to concentrate the liquid at the bottom.
5. Store the suspended plasmid at -20°C. The DNA is stable for at least one year from date of shipping when stored at -20°C.

RefSeq: [NM_203344.3](#)

RefSeq Size: 1416 bp

RefSeq ORF: 591 bp

Locus ID: 29946

UniProt ID: [Q9UJW9](#)

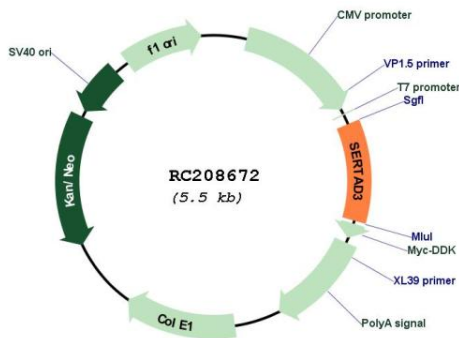
Cytogenetics: 19q13.2

Protein Families: Transcription Factors

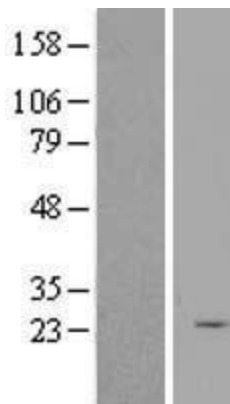
MW: 21.8 kDa

Gene Summary: The protein encoded by this gene was identified in a yeast two-hybrid assay employing the second subunit of human replication protein A as bait. It is localized to the nucleus and its expression is significantly higher in cancer cell lines compared to normal cell lines. This protein has also been shown to be a strong transcriptional co-activator. Alternative splicing has been observed at this locus and two variants, both encoding the same protein, have been identified. [provided by RefSeq, Jul 2008]

Product images:



Circular map for RC208672



Western blot validation of overexpression lysate (Cat# [LY404404]) using anti-DDK antibody (Cat# [TA50011-100]). Left: Cell lysates from untransfected HEK293T cells; Right: Cell lysates from HEK293T cells transfected with RC208672 using transfection reagent MegaTran 2.0 (Cat# [TT210002]).