

Product datasheet for RC208668

HS1BP3 (NM_022460) Human Tagged ORF Clone

Product data:

Product Type:	Expression Plasmids
Product Name:	HS1BP3 (NM_022460) Human Tagged ORF Clone
Tag:	Myc-DDK
Symbol:	HS1BP3
Synonyms:	ETM2; HS1-BP3
Mammalian Cell Selection:	Neomycin
Vector:	pCMV6-Entry (PS100001)
E. coli Selection:	Kanamycin (25 ug/mL)
ORF Nucleotide Sequence:	>RC208668 ORF sequence Red=Cloning site Blue=ORF Green=Tags(s)

TTTTGTAATACGACTCACTATAGGGCGGCCGGAATTCGTCGACTGGATCCGGTACCGAGGAGATCTGCC
GCC**CGGATCGCC**

ATGCAGTCCCCGGCGGTGCTCGTCACCTCCAGGCGACTTCAGAATGCCACACTGGCCTCGACCTGACTG
TGCCCCAGCACCAGGAGGTACGGGGCAAGATGATGTCTGGACACGTGGAGTACCAGATCCTGGTGGTGAC
CCGTCTGGCTGCGTTCAAGTCGGCCAAGCACAGGCCCGAGGATGTCGTCCAGTTCCTGGTCTCCAAAAG
TACAGCGAGATTGAGGAGTTTTACCAGAACTGAGCAGTCGTTATGCAGCAGCCAGCCTCCCCCACTAC
CCAGGAAGTCTGTTTGTGGGAGTCTGACATCCGGGAGAGGAGCCGTGTTCAATGAGATCCTGCG
CTGTGTCTCCAAGGATGCCGAGTTGGCAGGCAGCCAGAGCTGTAGAGTTCCTTAGTACCAGATCCCCA
GGGCTGCAGGGCTCACCAGCAGAGATTCTCTGTCTGGATGGCACAGACAGTCAGACAGGGAATGATG
AAGAGGCTTTCGACTTTTTTGGAGGCAAGACCAAGTGGCAGAAGAGGGTCCGCCCTCCAGAGCCTGAA
GGGCGAGGATGCTGAGGAATCCTTGGAGGAGGAGGAAGCGCTGGACCCTCTGGGCATTATGCGCTCCAAG
AAGCCAAGAAACATCCCAAAGTGGCCGTGAAAGCCAAGCCCTCGCCCCGGCTCACCATCTTTGACGAGG
AGGTGGACCCTGATGAGGGGCTCTTTGGCCCGGCAGGAAGCTGTCTCCACAGGACCCTCGGAGGACGT
GTCATCCATGGACCCCTGAAGCTATTTGATGATCCTGACCTCGCGGGGCCATCCCCCTGGGTGACTCC
CTCCTGCTGCCGCGCCTGTGAGAGTGGAGGGCCACACCCAGCCTCAGCCACAGGAGGACGCTCCAAGG
AACTGTTCCAGAGTTGAAGAGGACTTGGACCAGATTCTGAACCTGGGAGCTGAGCCCAAACCCAAGCCCCA
GCTTAAGCCAAGCCACCAGTGGCAGCTAAGCCGGTGATACCCAGAAAACCAGCTGTTCCCCCAAAGCG
GGCCCGCTGAAGCTGTGGCTGGGCAGCAGAAGCCGAGGAGCAGATCCAAGCCATGGACGAGATGGACA
TCTTGAGTACATCCAGGACCAGATACACCAGCCAGGCCACCCCAAGCCTCTTC

ACGCGTACGCGGCCGCTCGAGCAGAACTCATCTCAGAAGAGGATCTGGCAGCAATGATATCCTGGATT
ACAAGGATGACGACGATAAGGTTTAA



[View online »](#)

Protein Sequence: >RC208668 protein sequence
Red=Cloning site Green=Tags(s)

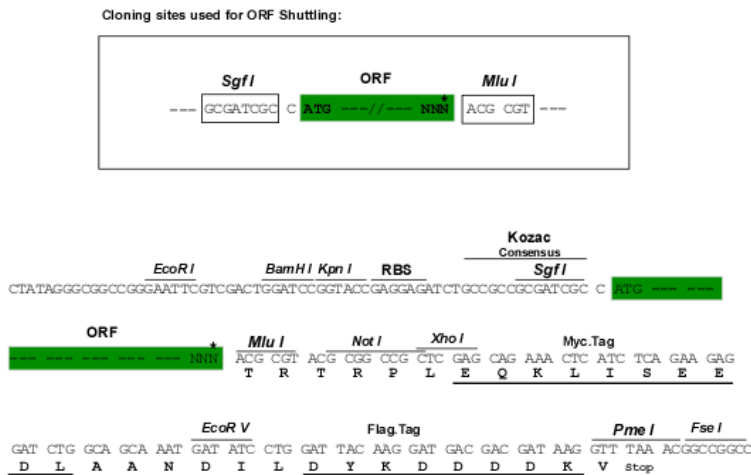
MQSPAVLVTSRRLQNAHTGLDL TVPQHQEVRGKMMSGHVEYQIL VVTRLAAFKSAKHPEDVVQFLVSKK
 YSEIEEFYQKLSRYAAASL PPLPRKLV FVGEDIRERRAVFNEILRCVSKDAELAGSPELLEFLGTRSP
 GAAGLTSRDSSVLDGTDSTGNDEEAFDFEEQDQVAEEGPPVQSLKGEDAEESLEEEEEALDPLGIMRSK
 KPCKHPKVAVKAKPSPRLTIFDEEVDPEGLFGPGRKLSPOQDSEDVSSMDPLKLFDDPDLGGAIPLGDS
 LLLPAACESGGPTPSLSHRDASKELFRVEEDLDQILNLGAEPKPKPQLKPKPPVAAKPVIPRKPVPVPPKA
 GPAEAVAGQQKPQEIQIAMDMDILQYIQDHDTPAQATPSLF

TRTRPLEQKLISEEDLAANDILDYKDDDDKV

Chromatograms: https://cdn.origene.com/chromatograms/mk6361_e05.zip

Restriction Sites: SgfI-MluI

Cloning Scheme:



* The last codon before the Stop codon of the ORF

ACCN: NM_022460

ORF Size: 1176 bp

OTI Disclaimer: The molecular sequence of this clone aligns with the gene accession number as a point of reference only. However, individual transcript sequences of the same gene can differ through naturally occurring variations (e.g. polymorphisms), each with its own valid existence. This clone is substantially in agreement with the reference, but a complete review of all prevailing variants is recommended prior to use. [More info](#)

OTI Annotation: This clone was engineered to express the complete ORF with an expression tag. Expression varies depending on the nature of the gene.

Components: The ORF clone is ion-exchange column purified and shipped in a 2D barcoded Matrix tube containing 10ug of transfection-ready, dried plasmid DNA (reconstitute with 100 ul of water).

Reconstitution Method:

1. Centrifuge at 5,000xg for 5min.
2. Carefully open the tube and add 100ul of sterile water to dissolve the DNA.
3. Close the tube and incubate for 10 minutes at room temperature.
4. Briefly vortex the tube and then do a quick spin (less than 5000xg) to concentrate the liquid at the bottom.
5. Store the suspended plasmid at -20°C. The DNA is stable for at least one year from date of shipping when stored at -20°C.

RefSeq: [NM_022460.4](#)

RefSeq Size: 2403 bp

RefSeq ORF: 1179 bp

Locus ID: 64342

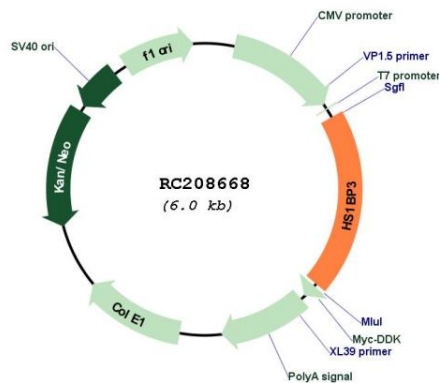
UniProt ID: [Q53T59](#)

Cytogenetics: 2p24.1

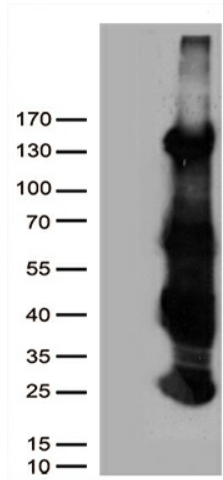
MW: 42.8 kDa

Gene Summary: The protein encoded by this gene shares similarity with mouse Hs1bp3, an Hcls1/Hs1-interacting protein that may be involved in lymphocyte activation. [provided by RefSeq, Jul 2008]

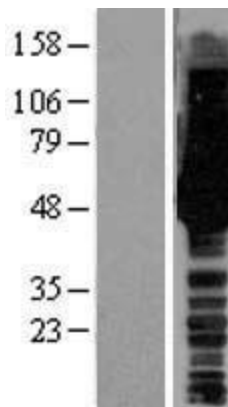
Product images:



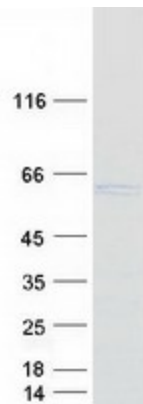
Circular map for RC208668



HEK293T cells were transfected with the pCMV6-ENTRY control (Cat# [PS100001], Left lane) or pCMV6-ENTRY HS1BP3 (Cat# RC208668, Right lane) cDNA for 48 hrs and lysed. Equivalent amounts of cell lysates (5 ug per lane) were separated by SDS-PAGE and immunoblotted with anti-HS1BP3 (Cat# [TA811411])(1:5000). Positive lysates [LY411675] (100ug) and [LC411675] (20ug) can be purchased separately from OriGene.



Western blot validation of overexpression lysate (Cat# [LY411675]) using anti-DDK antibody (Cat# [TA50011-100]). Left: Cell lysates from untransfected HEK293T cells; Right: Cell lysates from HEK293T cells transfected with RC208668 using transfection reagent MegaTran 2.0 (Cat# [TT210002]).



Coomassie blue staining of purified HS1BP3 protein (Cat# [TP308668]). The protein was produced from HEK293T cells transfected with HS1BP3 cDNA clone (Cat# RC208668) using MegaTran 2.0 (Cat# [TT210002]).