

Product datasheet for **RC208666**

ROR beta (RORB) (NM_006914) Human Tagged ORF Clone

Product data:

Product Type:	Expression Plasmids
Product Name:	ROR beta (RORB) (NM_006914) Human Tagged ORF Clone
Tag:	Myc-DDK
Symbol:	ROR beta
Synonyms:	bA133M9.1; EIG15; NR1F2; ROR-BETA; RZR-BETA; RZRB
Mammalian Cell Selection:	Neomycin
Vector:	pCMV6-Entry (PS100001)
E. coli Selection:	Kanamycin (25 ug/mL)



[View online »](#)

ORF Nucleotide Sequence:

>RC208666 ORF sequence
 Red=Cloning site Blue=ORF Green=Tags(s)

TTTTGTAATACGACTCACTATAGGGCGGCCGGAATTCGTCGACTGGATCCGGTACCGAGGAGATCTGCC
 GCC**CGATCGCC**

ATGCGAGCACAAATTGAAGTGATACCATGCAAAATTTGTGGCGATAAGTCCTCTGGGATCCACTACGGAG
 TCATCACATGTGAAGGCTGCAAGGGATTCTTTAGGAGGAGCCAGCAGAACAATGCTTCTTATTCTGCC
 AAGGCAGAGAAACTGTTTAATTGACAGAACGAACAGAAACCGTTGCCAACTGCCGACTGCAGAAGTGT
 CTTGCCCTAGGAATGTCAAGAGATGCTGTGAAGTTGGGAGAATGTCCAAGAAGCAAAGGACAGCCTGT
 ATGCTGAGGTGCAGAAGCACCAGCAGCGGCTGCAGGAACAGCGGCAGCAGAGTGGGGAGGCAGAAGC
 CCTTGCCAGGGTGTACAGCAGCAGCATTAGCAACGGCCTGAGCAACCTGAACAACGAGACCAGCGGCACT
 TATGCCAACGGGCAGTCATTGACCTGCCCAAGTCTGAGGGTTATTACAACGTCGATTCCGGTCAGCCGT
 CCCCTGATCAGTCAGGACTTGACATGACTGGAATCAAACAGATAAAGCAAGAACCATCTATGACCTCAC
 ATCCGTACCCAATTGTTTACCTATAGCTCTTTCAACAATGGGCAGTTAGCACCAGGGATAACCATGACT
 GAAATCGACCGAATTGCACAGAACATCATTAAAGTCCCATTGGAGACATGCAATACACCATGGAAGAGC
 TGCACCAGCTGGCGTGGCAGACCCACACCTATGAAGAAATTAAGCATATCAAAGCAAGTCCAGGGAAGC
 ACTGTGGCAACAATGTGCCATCCAGATCACTCACGCCATCCAATACGTGGTGGAGTTTGCAGGCGGATA
 ACAGGCTTCATGGAGCTCTGTCAAAATGATCAAATCTACTTCTGAAGTCAGGTTGCTTGGAAAGTGGTTT
 TAGTGAGAATGTGCCGTGCCCTTCAACCCATTAACAACACTGTTCTGTTTGAAGGAAAATATGGAGGAAT
 GCAAAATGTTCAAAGCCTTAGGTTCTGATGACCTAGTGAATGAAGCATTGACTTTGCAAAGAATTTGTGT
 TCCTTGACAGTGCACCGAGGAGATCGCTTTGTTCTCATCTGCTGTTCTGATATCTCCAGACCGAGCCT
 GGCTTATAGAACAAGGAAAGTCCAGAAGCTTCAGGAAAAAATTTATTTTGCACCTCAACATGTGATTCA
 GAAGAATCACCTGGATGATGAGACCTTGGCAAAGTTAATAGCCAAGATACCAACCATCACGGCAGTTTGC
 AACTTGACGGGGAAGCTGCAGGTATTTAAGCAATCTCATCCAGAGATAGTGAATACACTGTTTCCTC
 CGTTATACAAGGAGCTCTTAATCCTGACTGTGCCACCGCTGCAAA

ACGCGTACGCGGCCGCTCGAGCAGAAACTCATCTCAGAAGAGGATCTGGCAGCAAATGATATCCTGGATT
 ACAAGGATGACGACGATAAGGTTTAA

Protein Sequence:

>RC208666 protein sequence
 Red=Cloning site Green=Tags(s)

MRAQIEVIPCKICGDKSSGIHYGVITCEGCKGFFRRSQNNASYSQPRQRNCLIDRTNRRNCQHRLQKC
 LALGMSRDAVKFGRMSKKQRDSL YAEVQKHQRLQEQRQQSGEAEALARVYSSISNGLSNLNNETSQT
 YANGHVIDLPKSEGYYNVDSGQSPDQSGLDMTGIKQIKQEPIDLTSPVNLFTYSSFNNGQLAPGITMT
 EIDRIAQNIKSHLETCQYTMELHQLAWQHTHYEIEIKAYQSKSREALWQCAIQITHAIQYVVEFAKRI
 TGFMELCQNDQILLKSGCLEVVLVRCRAFNPLNNTVLFEGKYGGMQMFKALGSDDLVNEAFDFAKNLC
 SLQLTEEEIALFSSAVLISPDRAWLIEPRKVQKLQEKIYFALQHVLIQKNHLDDETLAKLIAKIPTITAVC
 NLHGEKLVQFKQSHPEIVNTLFPPLYKELFNPDCATGCK

TRTRPLEQKLISEEDLAANDILDYKDDDDKV

Chromatograms:

https://cdn.origene.com/chromatograms/mk6133_a03.zip

Restriction Sites:

Sgfl-Mlul

Cloning Scheme:


ACCN: NM_006914

ORF Size: 1377 bp

OTI Disclaimer: The molecular sequence of this clone aligns with the gene accession number as a point of reference only. However, individual transcript sequences of the same gene can differ through naturally occurring variations (e.g. polymorphisms), each with its own valid existence. This clone is substantially in agreement with the reference, but a complete review of all prevailing variants is recommended prior to use. [More info](#)

OTI Annotation: This clone was engineered to express the complete ORF with an expression tag. Expression varies depending on the nature of the gene.

Components: The ORF clone is ion-exchange column purified and shipped in a 2D barcoded Matrix tube containing 10ug of transfection-ready, dried plasmid DNA (reconstitute with 100 ul of water).

Reconstitution Method:

1. Centrifuge at 5,000xg for 5min.
2. Carefully open the tube and add 100ul of sterile water to dissolve the DNA.
3. Close the tube and incubate for 10 minutes at room temperature.
4. Briefly vortex the tube and then do a quick spin (less than 5000xg) to concentrate the liquid at the bottom.
5. Store the suspended plasmid at -20°C. The DNA is stable for at least one year from date of shipping when stored at -20°C.

Note: Plasmids are not sterile. For experiments where strict sterility is required, filtration with 0.22um filter is required.

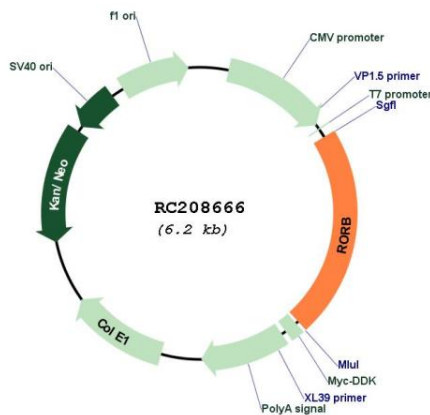
RefSeq: [NM_006914.4](#)

RefSeq Size: 3604 bp

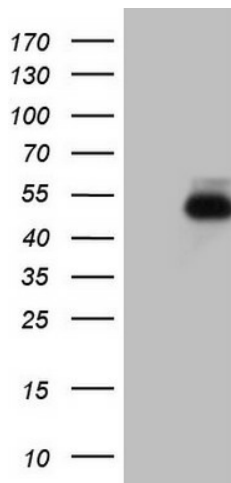
RefSeq ORF: 1380 bp

Locus ID: 6096

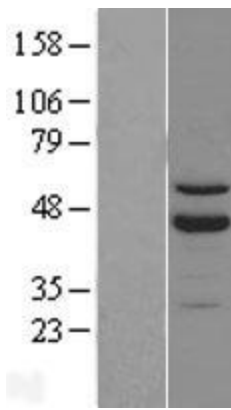
Cytogenetics: 9q21.13
Domains: HOLI, zf-C4
Protein Families: Druggable Genome, Nuclear Hormone Receptor, Transcription Factors
MW: 52.1 kDa
Gene Summary: The protein encoded by this gene is a member of the NR1 subfamily of nuclear hormone receptors. It is a DNA-binding protein that can bind as a monomer or as a homodimer to hormone response elements upstream of several genes to enhance the expression of those genes. The encoded protein has been shown to interact with NM23-2, a nucleoside diphosphate kinase involved in organogenesis and differentiation, and to help regulate the expression of some genes involved in circadian rhythm. [provided by RefSeq, Feb 2014]

Product images:


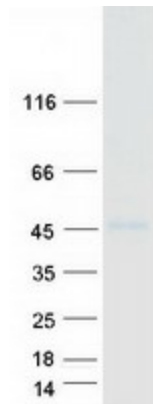
Circular map for RC208666



HEK293T cells were transfected with the pCMV6-ENTRY control (Cat# [PS100001], Left lane) or pCMV6-ENTRY RORB (Cat# RC208666, Right lane) cDNA for 48 hrs and lysed. Equivalent amounts of cell lysates (5 ug per lane) were separated by SDS-PAGE and immunoblotted with anti-RORB (Cat# [TA806996])(1:2000). Positive lysates [LY402058] (100ug) and [LC402058] (20ug) can be purchased separately from OriGene.



Western blot validation of overexpression lysate (Cat# [LY402058]) using anti-DDK antibody (Cat# [TA50011-100]). Left: Cell lysates from untransfected HEK293T cells; Right: Cell lysates from HEK293T cells transfected with RC208666 using transfection reagent MegaTran 2.0 (Cat# [TT210002]).



Coomassie blue staining of purified RORB protein (Cat# [TP308666]). The protein was produced from HEK293T cells transfected with RORB cDNA clone (Cat# RC208666) using MegaTran 2.0 (Cat# [TT210002]).