

Product datasheet for **RC208665**

AP2 gamma (TFAP2C) (NM_003222) Human Tagged ORF Clone

Product data:

Product Type:	Expression Plasmids
Product Name:	AP2 gamma (TFAP2C) (NM_003222) Human Tagged ORF Clone
Tag:	Myc-DDK
Symbol:	AP2 gamma
Synonyms:	AP2-GAMMA; ERF1; hAP-2g; TFAP2G
Mammalian Cell Selection:	Neomycin
Vector:	pCMV6-Entry (PS100001)
E. coli Selection:	Kanamycin (25 ug/mL)



[View online »](#)

ORF Nucleotide Sequence:

>RC208665 ORF sequence
 Red=Cloning site Blue=ORF Green=Tags(s)

TTTTGTAATACGACTCACTATAGGGCGGCCGGAATTCGTCGACTGGATCCGGTACCGAGGAGATCTGCC
 GCC**CGCATCGCC**

ATGTTGTGAAAAATAACCGATAATGTCAAGTACGAAGAGGACTGCGAGGATCGCCACGACGGGAGCAGCA
 ATGGGAATCCGCGGGTCCCCACCTCTCCTCCGCGGGCAGCACCTCTACAGCCCGCGCCACCCCTCTC
 CCACACTGGAGTCGCGGAATATCAGCCGCCACCCTACTTTCCCCCTCCCTACCAGCAGCTGGCCTACTCC
 CAGTCGGCCGACCCTACTCGCATCTGGGGGAAGCGTACGCCCGCCCATCAACCCCTGCACCAGCCGG
 CGCCACAGGCAGCCAGCAGCAGGCCTGGCCCGGCCAGAGCCAGGAGGGAGCGGGGCTGCCCTCGCA
 CCACGGGCGCCCGCCGGCCTACTGCCCCACCTCTCCGGGCTGGAGGCGGGCGCGGTGAGCGCCCGCAGG
 GATGCCTACCGCCGCTCCGACCTGCTGCTGCCCCACGCACACGCCCTGGATGCCGCGGCCTGGCCGAGA
 ACCTGGGGCTCCACGACATGCCTCACCAGATGGACGAGGTGCAGAATGTCGACGACCAGCACCTGTTGCT
 GCACGATCAGACAGTCAATCGCAAAGTCCCATTTCATGACCAAGAACCCTCTGAACCTCCCCTGTCAG
 AAGGAGCTGGTGGGGGCCGTAATGAACCCCACTGAGGTCTTCTGCTCAGTCCCTGGAAGATTGTCGCTCC
 TCAGCTCTACGTCTAAATACAAAGTGACAGTGGCTGAAGTACAGAGGCGACTGTCCCCACCTGAATGCTT
 AAATGCCTCGTTACTGGGAGGTGTTCTCAGAAGAGCCAAATCGAAAAATGGAGGCCGGTCTTGCGGGAG
 AAGTTGGACAAGATTGGGTTGAATCTTCCGGCCGGGAGGCGGAAAGCCGCTCATGTGACTCTCCTGACAT
 CCTTAGTAGAAGGTGAAGCTGTTCAATTTGGCTAGGGACTTTGCCTATGTCTGTGAAGCCGAATTTCTAG
 TAAACCAAGTGGCAGAATATTTAACAGACCTCATCTTGGAGGACGAAATGAGATGGCAGCTAGGAAGAAC
 ATGCTATTGGCGGCCAGCAACTGTGTAAGAATTCACAGAACTTCTCAGCCAAGACCCGGACCCCCATG
 GGACCAAGCAGGCTCGCCCAAGTCTTGGAGACGAACATACAGAACTGCTTGTCTCATTTCAGCCTGATTAC
 CCACGGGTTTGGCAGCCAGGCCATCTGTGCCGCGGTGTCTGCCCTGCAGAACTACATCAAAGAAGCCCTG
 ATTGTCATAGACAAATCTACATGAACCTGGAGACCAGAGTCCAGCTGATTCTAACAAAACCCTGGAGA
 AAATGGAGAAACACAGGAAA

ACGCGTACGCGGCCGCTCGAGCAGAAACTCATCTCAGAAGAGGATCTGGCAGCAAATGATATCCTGGATT
 ACAAGGATGACGACGATAAGGTTTAA

Protein Sequence:

>RC208665 protein sequence
 Red=Cloning site Green=Tags(s)

MLWKITDNVKEYEEDCEDRHDGSSNGNPRVPHLSSAGQHL YSPAPPLSHTGVAEYQPPPYFPPPYQLAYS
 QSADPYSHLGEAYAAAINPLHQAPTGSQQQAWPGRQSQEGAGLPSHHGRPAGLLPHLSGLEAGAVSARR
 DAYRRSDLLLPHAHALDAAGLAENLGLHDMPHQMDEVQNVDDQHLLLDQTVIRKGPISMTKNPLNLP
 KELVGAVMNPTEVFCVPGRLSLLSSTSKYKVTVAEVQRRLSPPECLNASLLGGVLRRAKSKNGGRSLRE
 KLDKIGLNL PAGRRAAHVTLTSLVEGEAVHLARDFAYVCEAEFSPKPAEYLTRPHLGGRNEMAARKN
 MLLAAQQLCKEFTTELLSQDRTPHGTSRLAPVLETNIQNCLSHFSLITHGFGSQAICAAVSALQNYIKEAL
 IVIDKSYMNPQSPADSNKTLEKMEKHK

TRTRPLEQKLISEEDLAANDILDYKDDDDKV

Chromatograms:

https://cdn.origene.com/chromatograms/mk6769_e12.zip

Restriction Sites:

Sgfl-Mlul

Cloning Scheme:


ACCN: NM_003222

ORF Size: 1350 bp

OTI Disclaimer: Due to the inherent nature of this plasmid, standard methods to replicate additional amounts of DNA in E. coli are highly likely to result in mutations and/or rearrangements. Therefore, OriGene does not guarantee the capability to replicate this plasmid DNA. Additional amounts of DNA can be purchased from OriGene with batch-specific, full-sequence verification at a reduced cost. Please contact our customer care team at custsupport@origene.com or by calling 301.340.3188 option 3 for pricing and delivery.

The molecular sequence of this clone aligns with the gene accession number as a point of reference only. However, individual transcript sequences of the same gene can differ through naturally occurring variations (e.g. polymorphisms), each with its own valid existence. This clone is substantially in agreement with the reference, but a complete review of all prevailing variants is recommended prior to use. [More info](#)

OTI Annotation: This clone was engineered to express the complete ORF with an expression tag. Expression varies depending on the nature of the gene.

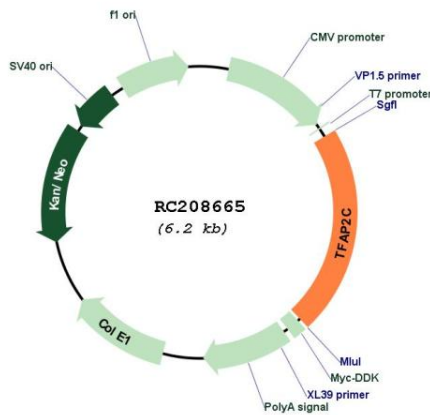
Components: The ORF clone is ion-exchange column purified and shipped in a 2D barcoded Matrix tube containing 10ug of transfection-ready, dried plasmid DNA (reconstitute with 100 ul of water).

- Reconstitution Method:**
1. Centrifuge at 5,000xg for 5min.
 2. Carefully open the tube and add 100ul of sterile water to dissolve the DNA.
 3. Close the tube and incubate for 10 minutes at room temperature.
 4. Briefly vortex the tube and then do a quick spin (less than 5000xg) to concentrate the liquid at the bottom.
 5. Store the suspended plasmid at -20°C. The DNA is stable for at least one year from date of shipping when stored at -20°C.

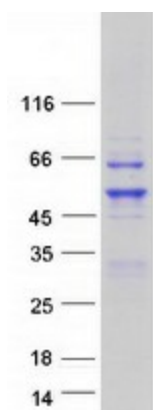
RefSeq: [NM_003222.4](#)
RefSeq Size: 2895 bp
RefSeq ORF: 1353 bp
Locus ID: 7022
UniProt ID: [Q92754](#)
Cytogenetics: 20q13.31
Domains: TF_AP-2
Protein Families: Druggable Genome, Transcription Factors
MW: 49.2 kDa

Gene Summary: The protein encoded by this gene is a sequence-specific DNA-binding transcription factor involved in the activation of several developmental genes. The encoded protein can act as either a homodimer or heterodimer with other family members and is induced during retinoic acid-mediated differentiation. It plays a role in the development of the eyes, face, body wall, limbs, and neural tube. [provided by RefSeq, Jul 2008]

Product images:



Circular map for RC208665



Coomassie blue staining of purified TFAP2C protein (Cat# [TP308665]). The protein was produced from HEK293T cells transfected with TFAP2C cDNA clone (Cat# RC208665) using MegaTran 2.0 (Cat# [TT210002]).