

## Product datasheet for **RC208664**

### EIF4EBP2 (NM\_004096) Human Tagged ORF Clone

#### Product data:

**Product Type:** Expression Plasmids  
**Product Name:** EIF4EBP2 (NM\_004096) Human Tagged ORF Clone  
**Tag:** Myc-DDK  
**Symbol:** EIF4EBP2  
**Synonyms:** 4EBP2; PHASII  
**Mammalian Cell Selection:** Neomycin  
**Vector:** pCMV6-Entry (PS100001)  
**E. coli Selection:** Kanamycin (25 ug/mL)  
**ORF Nucleotide Sequence:** >RC208664 ORF sequence  
 Red=Cloning site Blue=ORF Green=Tags(s)

TTTTGTAATACGACTCACTATAGGGCGGCCGGAATTCGTCGACTGGATCCGGTACCGAGGAGATCTGCC  
 GCC**CGATCGCC**

ATGTCCTCGTCAGCCGGCAGCGCCACCAGCCCAGCCAGAGCCGCGCCATCCCCACCCGACCGTGGCCA  
 TCAGCGACGCCGCGCAGCTACCTCATGACTATTGCACCACGCCCGGGGGGACGCTCTTCTCCACCACACC  
 GGGAGGAACCTCGAATCATTTATGACAGAAAGTTTCTGTTGGATCGTCGCAATTCTCCATGGCTCAGACC  
 CCACCCCTGCCACCTGCCAATATCCCAGGAGTCACTAGCCCTGGCACCTAATTGAAGACTCCAAAGTAG  
 AAGTAAACAATTTGAACAACCTTGAACAATCAGCAGGAAACATGCAGTTGGGGATGATGCTCAGTTCGA  
 GATGGACATC

**ACGCGT**ACGCGGCCGCTCGAGCAGAAACTCATCTCAGAAGAGGATCTGGCAGCAAATGATATCCTGGATT  
 ACAAGGATGACGACGATAAGGTTTAA

**Protein Sequence:** >RC208664 protein sequence  
 Red=Cloning site Green=Tags(s)

MSSSAGSGHQPSQSRAIPTRTVAISDAAQLPHDYCTTPGGTLFSTTPGGTRIIYDRKFLLDRRNSPMAQT  
 PPCHLPNIPGVTSPTGLIEDSKVEVNNLNNLNNHDKHAYGDDAQFEMDI

**TR**TRPLEQKLISEEDLAANDILDYKDDDDKV

**Chromatograms:** [https://cdn.origene.com/chromatograms/mk6091\\_h07.zip](https://cdn.origene.com/chromatograms/mk6091_h07.zip)

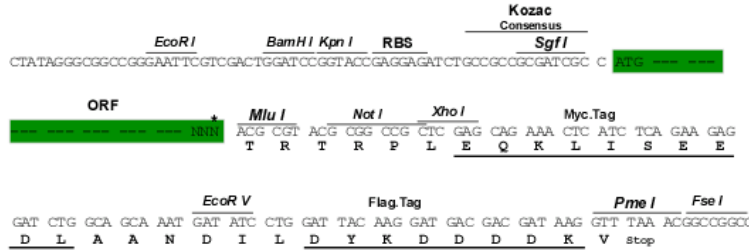
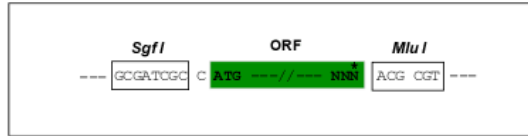
**Restriction Sites:** SgfI-MluI



[View online »](#)

**Cloning Scheme:**

Cloning sites used for ORF Shuttling:



\* The last codon before the Stop codon of the ORF

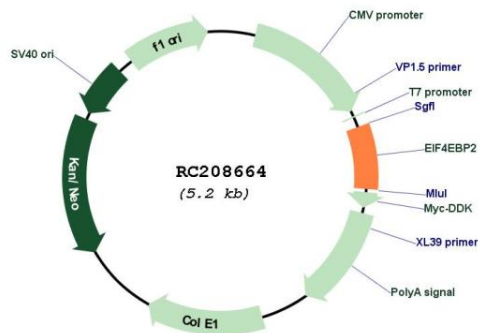
- ACCN:** NM\_004096
- ORF Size:** 360 bp
- OTI Disclaimer:** The molecular sequence of this clone aligns with the gene accession number as a point of reference only. However, individual transcript sequences of the same gene can differ through naturally occurring variations (e.g. polymorphisms), each with its own valid existence. This clone is substantially in agreement with the reference, but a complete review of all prevailing variants is recommended prior to use. [More info](#)
- OTI Annotation:** This clone was engineered to express the complete ORF with an expression tag. Expression varies depending on the nature of the gene.
- Components:** The ORF clone is ion-exchange column purified and shipped in a 2D barcoded Matrix tube containing 10ug of transfection-ready, dried plasmid DNA (reconstitute with 100 ul of water).
- Reconstitution Method:**
  1. Centrifuge at 5,000xg for 5min.
  2. Carefully open the tube and add 100ul of sterile water to dissolve the DNA.
  3. Close the tube and incubate for 10 minutes at room temperature.
  4. Briefly vortex the tube and then do a quick spin (less than 5000xg) to concentrate the liquid at the bottom.
  5. Store the suspended plasmid at -20°C. The DNA is stable for at least one year from date of shipping when stored at -20°C.
- Note:** Plasmids are not sterile. For experiments where strict sterility is required, filtration with 0.22um filter is required.
- RefSeq:** [NM\\_004096.5](#)
- RefSeq Size:** 7531 bp
- RefSeq ORF:** 363 bp

**Locus ID:** 1979  
**UniProt ID:** [Q13542](#)  
**Cytogenetics:** 10q22.1

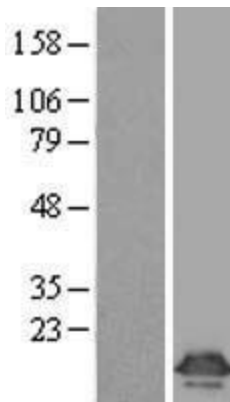
**Protein Families:** Transcription Factors  
**MW:** 12.9 kDa

**Gene Summary:** This gene encodes a member of the eukaryotic translation initiation factor 4E binding protein family. The gene products of this family bind eIF4E and inhibit translation initiation. However, insulin and other growth factors can release this inhibition via a phosphorylation-dependent disruption of their binding to eIF4E. Regulation of protein production through these gene products have been implicated in cell proliferation, cell differentiation and viral infection. [provided by RefSeq, Oct 2008]

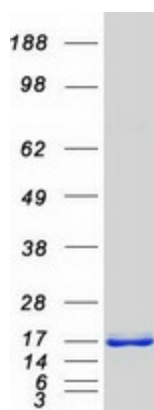
**Product images:**



Circular map for RC208664



Western blot validation of overexpression lysate (Cat# [LY418216]) using anti-DDK antibody (Cat# [TA50011-100]). Left: Cell lysates from untransfected HEK293T cells; Right: Cell lysates from HEK293T cells transfected with RC208664 using transfection reagent MegaTran 2.0 (Cat# [TT210002]).



Coomassie blue staining of purified EIF4EBP2 protein (Cat# [TP308664]). The protein was produced from HEK293T cells transfected with EIF4EBP2 cDNA clone (Cat# RC208664) using MegaTran 2.0 (Cat# [TT210002]).