

Product datasheet for **RC208663**

LEF1 (NM_016269) Human Tagged ORF Clone

Product data:

Product Type:	Expression Plasmids
Product Name:	LEF1 (NM_016269) Human Tagged ORF Clone
Tag:	Myc-DDK
Symbol:	LEF1
Synonyms:	LEF-1; TCF1ALPHA; TCF7L3; TCF10
Mammalian Cell Selection:	Neomycin
Vector:	pCMV6-Entry (PS100001)
E. coli Selection:	Kanamycin (25 ug/mL)
ORF Nucleotide Sequence:	>RC208663 ORF sequence Red=Cloning site Blue=ORF Green=Tags(s)

TTTTGTAATACGACTCACTATAGGGCGGCCGGGAATTCGTCGACTGGATCCGGTACCGAGGAGATCTGCC
GCC**CGATCGCC**

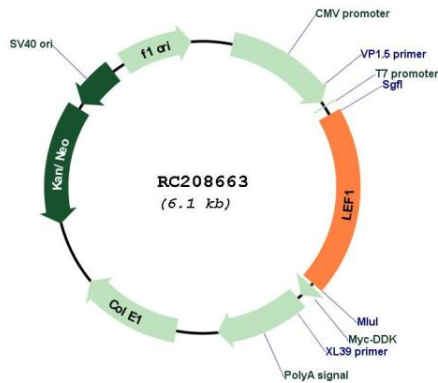
ATGCCCAACTCTCCGGAGGAGGTGGCGGCGCGGGGGGACCCGGAACCTCTGCGCCACGGACGAGATGA
TCCCTTCAAGGACGAGGGCGATCCTCAGAAGGAAAAGATCTTCGCCGAGATCAGTCATCCCGAAGAGGA
AGGCGATTTAGCTGACATCAAGTCTTCTTGGTGAACGAGTCTGAAATCATCCCGCCAGCAACGGACAC
GAGGTGGCCAGACAAGCACAAACCTCTCAGGAGCCCTACCACGACAAGGCCAGAGAACACCCCGATGACG
GAAAGCATCCAGATGGAGGCCTCTACAACAAGGGACCCTCTACTCGAGTTATTCGGGTACATAATGAT
GCCAAATATGAATAACGACCCATACATGTCAAATGGATCTCTTTCTCACCCATCCCGAGAACATCAAAT
AAAGTGCCCGTGGTGCAGCCATCCCATGCGGTCCATCCTCTACCCCCCTCATCACTTACAGTGACGAGC
ACTTTTCTCCAGGATCACACCCGTACACATCCCATCAGATGTCAACTCCAAACAAGGCATGTCCAGACA
TCCTCCAGCTCCTGATATCCCTACTTTTATCCCTTGTCTCCGGGTGGTGTGGACAGATCACCCCACT
CTTGGCTGGCAAGGTGAGCCTGTATATCCCATCACGGGTGGATTGAGCAACCCATCCCATCCTCACTGT
CAGTCGACACTTCCATGTCCAGGTTTTCCCATCATATGATTCCCGGTCTCCTGGTCCCCACACAACCTGG
CATCCCTCATCCAGCTATTGTAACACCTCAGGTCAAACAGGAACATCCCCACACTGACAGTGACCTAATG
CACGTGAAGCCTCAGCATGAACAGAGAAAAGGAGCAGGAGCCAAAAGACCTCACATTAAGAAGCCTCTGA
ATGCTTTTATGTTATACATGAAAGAAATGAGAGCGAATGTCGTTGCTGAGTGTACTCTAAAAGAAAAGTGC
AGCTATCAACCAGATTCTTGGCAGAAGGTGGCATGCCCTCTCCCGTGAAGAGCAGGCTAAATATTATGAA
TTAGCACGGAAAAGAAAGACAGCTACATATGCAGCTTTATCCAGGCTGGTCTGCAAGAGACAATTATGGTA
AGAAAAAGAAGAGGAAGAGAGAGAACTACAGGAATCTGCATCAGGTACAGGTCCAAGAATGACAGCTGC
CTACATC

ACGCGTACGCGGCCGCTCGAGCAGAAACTCATCTCAGAAGAGGATCTGGCAGCAAATGATATCCTGGATT
ACAAGGATGACGACGATAAGGTTTAA

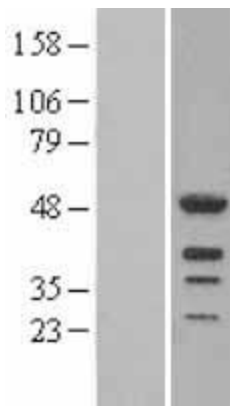


Reconstitution Method:	<ol style="list-style-type: none">1. Centrifuge at 5,000xg for 5min.2. Carefully open the tube and add 100ul of sterile water to dissolve the DNA.3. Close the tube and incubate for 10 minutes at room temperature.4. Briefly vortex the tube and then do a quick spin (less than 5000xg) to concentrate the liquid at the bottom.5. Store the suspended plasmid at -20°C. The DNA is stable for at least one year from date of shipping when stored at -20°C.
Note:	Plasmids are not sterile. For experiments where strict sterility is required, filtration with 0.22um filter is required.
RefSeq:	NM_016269.5
RefSeq Size:	3620 bp
RefSeq ORF:	1200 bp
Locus ID:	51176
UniProt ID:	Q9UJU2
Cytogenetics:	4q25
Domains:	HMG
Protein Families:	Adult stem cells, Druggable Genome, ES Cell Differentiation/IPS, Transcription Factors
Protein Pathways:	Acute myeloid leukemia, Adherens junction, Arrhythmogenic right ventricular cardiomyopathy (ARVC), Basal cell carcinoma, Colorectal cancer, Endometrial cancer, Melanogenesis, Pathways in cancer, Prostate cancer, Thyroid cancer, Wnt signaling pathway
MW:	44.2 kDa
Gene Summary:	This gene encodes a transcription factor belonging to a family of proteins that share homology with the high mobility group protein-1. The protein encoded by this gene can bind to a functionally important site in the T-cell receptor-alpha enhancer, thereby conferring maximal enhancer activity. This transcription factor is involved in the Wnt signaling pathway, and it may function in hair cell differentiation and follicle morphogenesis. Mutations in this gene have been found in somatic sebaceous tumors. This gene has also been linked to other cancers, including androgen-independent prostate cancer. Alternative splicing results in multiple transcript variants. [provided by RefSeq, Oct 2009]

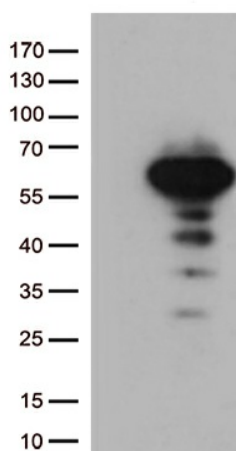
Product images:



Circular map for RC208663



Western blot validation of overexpression lysate (Cat# [LY402529]) using anti-DDK antibody (Cat# [TA50011-100]). Left: Cell lysates from untransfected HEK293T cells; Right: Cell lysates from HEK293T cells transfected with RC208663 using transfection reagent MegaTran 2.0 (Cat# [TT210002]).



HEK293T cells were transfected with the pCMV6-ENTRY control (Cat# [PS100001], Left lane) or pCMV6-ENTRY LEF1 (Cat# RC208663, Right lane) cDNA for 48 hrs and lysed. Equivalent amounts of cell lysates (5 ug per lane) were separated by SDS-PAGE and immunoblotted with anti-LEF1 (Cat# [TA812988])(1:500). Positive lysates [LY402529] (100ug) and [LC402529] (20ug) can be purchased separately from OriGene.