

Product datasheet for **RC208662**

CPEB1 (NM_030594) Human Tagged ORF Clone

Product data:

Product Type:	Expression Plasmids
Product Name:	CPEB1 (NM_030594) Human Tagged ORF Clone
Tag:	Myc-DDK
Symbol:	CPEB1
Synonyms:	CPE-BP1; CPEB; CPEB-1; h-CPEB; hCPEB-1
Mammalian Cell Selection:	Neomycin
Vector:	pCMV6-Entry (PS100001)
E. coli Selection:	Kanamycin (25 ug/mL)



[View online »](#)

ORF Nucleotide Sequence:

>RC208662 ORF sequence
 Red=Cloning site Blue=ORF Green=Tags(s)

TTTTGTAATACGACTCACTATAGGGCGGCCGGGAATTCGTCGACTGGATCCGGTACCGAGGAGATCTGCC
 GCC**CGCATCGCC**

ATGGCGTTCCCGCTGGAAGAAGAAGCAGGAAGGATAAAAGATTGCTGGGACAACCAGGAAGCACCTGCTC
 TCTCCACGTGTAGTAATGCCAATATCTTTGGAAGGATAAATGCCATATTGGATAATTCTCTGGATTCAG
 TAGAGTCTGCACTACACCTATAAACCGAGGAATTCATGATCATTGTCAGACTTCCAGGACTCTGAAGAA
 ACAGTTACAAGCAGGATGCTTTTCCCAACCTCTGCGCAAGAATCTCCCGTGGCCTCCAGATGCAAATG
 ACTTGTGCCTTGGCTGCAGTCCCTCAGTCTGACAGGCTGGGACCGACCCTGGAGCACCCAGGACTCAGA
 TTCCTCAGCCCAGAGCAGCACACTCGGTACTGAGCATGCTCCATAACCCACTGGGAAATGCTCCTAGGA
 AAACCCCTTGGCTTCTGCCTCTGGATCCCCTGGGTCTGACTTGGTGGACAAGTTCCAGCACCCCT
 CAGTTAGAGGATCAGCCTGGACACCCGCCCATCCTGGACTCTCGATCTAGCAGCCCTCTGACTCAGA
 CACCAGTGGCTCAGCTCTGGATCAGATCATCTCTCAGATTTGATTTCAAGCCTTCGATTTCTCCACCT
 CTGCCCTTCTGTCTCTGTCCAGGGGTGGTCCCAGAGACCCTTTAAAGATGGGGGTAGGGTCTCGGATGG
 ACCAAGAGCAAGCTGCTCTTGTGCACTACTCCCTCCCAACCAAGTGGTCAAAGAGATGGCCAGGAGC
 TTCTGTGTGGCCATCCTGGGACCTCCTCGAAGCTCCCAAAGACCCCTTCAGCATAGAGAGAGAGGCCAGG
 CTGCACCACAAGCTGCAGCTGTGAATGAAGCCACCTGTACCTGGAGTGGCCAGCTTCTCCCGGAACT
 ATAAGAACCCATCTACTCTTGAAGGTGTTTCTAGGAGGTGTTCTTGGGATATTACAGAAGCTGGATT
 AGTTAACACCTTCCGTGTTTTGGCTCTTTGAGTGTGGAGTGGCCTGGTAAGGATGGCAAGCATCCCCGG
 TGCTCTCCAAAGGATATGTGTATCTGGTCTTGAAGTGAAGTGAAGTGAAGTGAAGTGAAGTGAAGTGAAG
 GCTCTCATGACCCGCTGAGCCAGATGGCCTGAGTGAATATTATTCAAGATGTCCAGCCGAAGGATGCG
 CTGCAAGGAGGTGCAAGTATCCCTGGGTATTAGCCGACAGTAACTTTGTCGGAGCCCATCTCAGAGG
 CTTGACCCAGCAGGACGGTGTGTGCGGTGCTCTGCATGGAATGCTAAATGCTGAGGCCCTGGCAGCCA
 TCTTGAACGACCTATTTGGTGGAGTGGTGTATGCCGGATTGACACAGATAAGCACAAGTATCCCATTGG
 TTCTGGTGTGACTTTCAATAACCAACGGAGTTACCTGAAAGCAGTCAGCGCTGCTTTTGTGGAGATC
 AAAACCACCAAGTTCACAAAGAAGTTCAGATTGACCCCTACCTAGAAGATTCTCTGTGCATATCTGCA
 GTTCTCAGCCTGGTCTTTCTTGTGCGAGATCAGGTCTGCTTCAAACTTCTGCCGGAGCTGCTGGCA
 CTGGCGGCACAGCATGGAGGGCCTGCGCCACCACGCCCTGATGCGGAACCAGAAGAACCAGATTCC
 AGC

ACGCGTACGCGGCCGCTCGAGCAGAAACTCATCTCAGAAGAGGATCTGGCAGCAAATGATATCCTGGATT
 ACAAGGATGACGACGATAAGGTTTAA

Protein Sequence:

>RC208662 protein sequence
 Red=Cloning site Green=Tags(s)

MAFPLEEEAGRIKDCWDNQEAPALSTCSNANIFRRINAILDNSLDFSRVCTTPINRGIHDHLPDFQDSEE
 TVTSRMLFPTSAQESSRGLPDANDLCLGLQSLSLTGWDRPWSTQSDSSAQSSHVSLSMLHNPLGNVLG
 KPPLSFLPLDPLGSDLVDKFPAPSVRGSRLDTRPILDSRSSPSDSDTSGFSSGSDHLSLISLRI SPP
 LPFLSLSGGGPRDPLKMGVGSRMDQEAALAAVTPSPTSASKRWPASVWPSWDLLEAPKDPFSIEREAR
 LHRQAAAVNEATCTWSGQLPPRNYKNPIYSCKVFLGGVPWDITEAGLVNTRVFGSLSVEWPGDKGKHP
 CPPKGYVYLVFELEKSVRSLAQACSHDPLSPDGLSEYFYMSSRRMRCKEVQVIPWVLADSNFVRSFSQR
 LDPSRTVFGALHGMLNAEALAILNDLFGGVVYAGIDTDKHKYPIGSGRVTFNQRSYLKAVSAAFVEI
 KTTKFTKKVQIDPYLEDLCHICSSQPGPFFCRDQVCFKYFCRSCWHRHSMGLRHHSPLMRNQKNRDS
 S

TRTRPLEQKLISEEDLAANDILDYKDDDDKV

Chromatograms:

https://cdn.origene.com/chromatograms/mk6361_f10.zip

Restriction Sites:

Sgfl-Mlul

Cloning Scheme:


ACCN: NM_030594

ORF Size: 1683 bp

OTI Disclaimer: The molecular sequence of this clone aligns with the gene accession number as a point of reference only. However, individual transcript sequences of the same gene can differ through naturally occurring variations (e.g. polymorphisms), each with its own valid existence. This clone is substantially in agreement with the reference, but a complete review of all prevailing variants is recommended prior to use. [More info](#)

OTI Annotation: This clone was engineered to express the complete ORF with an expression tag. Expression varies depending on the nature of the gene.

Components: The ORF clone is ion-exchange column purified and shipped in a 2D barcoded Matrix tube containing 10ug of transfection-ready, dried plasmid DNA (reconstitute with 100 ul of water).

- Reconstitution Method:**
1. Centrifuge at 5,000xg for 5min.
 2. Carefully open the tube and add 100ul of sterile water to dissolve the DNA.
 3. Close the tube and incubate for 10 minutes at room temperature.
 4. Briefly vortex the tube and then do a quick spin (less than 5000xg) to concentrate the liquid at the bottom.
 5. Store the suspended plasmid at -20°C. The DNA is stable for at least one year from date of shipping when stored at -20°C.

Note: Plasmids are not sterile. For experiments where strict sterility is required, filtration with 0.22um filter is required.

RefSeq: [NM_030594.5](#)

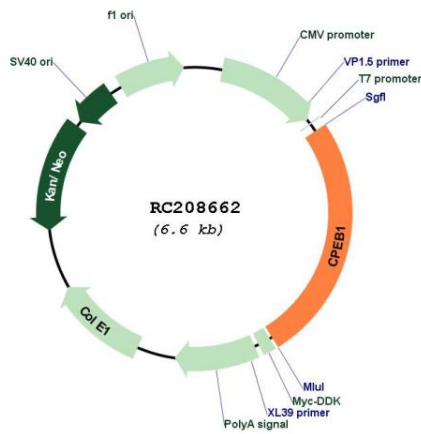
RefSeq Size: 3241 bp

RefSeq ORF: 1686 bp

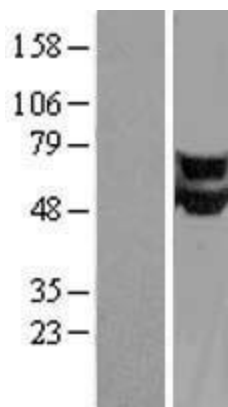
Locus ID: 64506

UniProt ID: [Q9BZB8](#)
Cytogenetics: 15q25.2
Protein Pathways: Dorso-ventral axis formation, Oocyte meiosis, Progesterone-mediated oocyte maturation
MW: 62.1 kDa
Gene Summary: This gene encodes a member of the cytoplasmic polyadenylation element binding protein family. This highly conserved protein binds to a specific RNA sequence, called the cytoplasmic polyadenylation element, found in the 3' untranslated region of some mRNAs. The encoded protein functions in both the cytoplasm and the nucleus. It is involved in the regulation of mRNA translation, as well as processing of the 3' untranslated region, and may play a role in cell proliferation and tumorigenesis. Alternative splicing results in multiple transcript variants. [provided by RefSeq, Jan 2014]

Product images:



Circular map for RC208662



Western blot validation of overexpression lysate (Cat# [LY410792]) using anti-DDK antibody (Cat# [TA50011-100]). Left: Cell lysates from untransfected HEK293T cells; Right: Cell lysates from HEK293T cells transfected with RC208662 using transfection reagent MegaTran 2.0 (Cat# [TT210002]).