

Product datasheet for **RC208660**

MTMR14 (NM_001077526) Human Tagged ORF Clone

Product data:

Product Type:	Expression Plasmids
Product Name:	MTMR14 (NM_001077526) Human Tagged ORF Clone
Tag:	Myc-DDK
Symbol:	MTMR14
Synonyms:	C3orf29
Mammalian Cell Selection:	Neomycin
Vector:	pCMV6-Entry (PS100001)
E. coli Selection:	Kanamycin (25 ug/mL)



[View online »](#)

ORF Nucleotide Sequence:

>RC208660 ORF sequence
 Red=Cloning site Blue=ORF Green=Tags(s)

TTTTGTAATACGACTCACTATAGGGCGGCCGGGAATTCGTCGACTGGATCCGGTACCGAGGAGATCTGCC
 GCC**CGCATCGCC**

ATGGCCGGCGCTCGGGCCGCCGCCCGCTGCCTCGGCGGGTCTCGGCCTCTTCAGGCAACCAGCCG
 CTCAGGAGCTGGGGCTTGGGGAGCTGCTGGAGGATTCTCCCGACTCAGTACCGGGCCAAGGATGGCAG
 CGGGACCGCGGCTCTAAGGTTGAGCGCATTGAGAAGAGATGTCTGGAGCTGTTTGGCCGAGACTACTGT
 TTCAGCGTGATTCCAAACACGAATGGGGATATCTGTGGCCACTATCCCGGCACATCGTGTCTCGGAGT
 ATGAGAGTTCTGAGAAGGAGAAAGACACGTTTGGAGTACCGTACAGGTGAGCAAGTTGCAAGACCTCAT
 CCACCGCAGCAAGATGGCCCGTGCAGAGGACGGTTTGTCTGCCAGTAATCCTGTTCAAGGGCAAGCAC
 ATTTGCAGGTGGCCCACTGGCTGGATGGGGAGAGCTGTATGGACGCTCAGGCTACAATATTTTTTCT
 CAGGGGGTGCAGATGATGCTGGCAGATGTGGAGGACGTCACGGAGGAGACTGTGCTCTTCAAGTGG
 TGACACGCATCTTTTGAAGGTCAGAGGCTATGACATCAAGCTGCTTCGATACCTGTCAAGTCAATAC
 ATCTGTGACCTGATGGTGGAGAACAAGAAGGTGAAGTTTGGCATGAATGTAACTCCTCTGAGAAGTGG
 ACAAAGCCAGCGCTATGCCGACTTCACTCTCCTCTCCATCCCGTATCCAGGCTGTGAATTTTTCAAGGA
 ATATAAGATCGGGATTACATGGCAGAAGGGCTCATATTTAACTGGAAGCAGGACTACGTTGATGCCCA
 TTGAGCATCCCGACTTCTGACTCACTCTGAAACATTGACTGGAGCCAGTATCAGTGTGGGACTG
 TGCAACAAACACAAAACCTGAAGCTGCTGCTTCTTAGTTAACAGTGATGACAGCGGGCTGCT
 GGTACTGTATCTCAGGCTGGGATCGGACCCCTCTCATCTCCCTCTGCGCCTTCTTGTGGGCT
 GATGGGCTCATCCACACGTCCTGAAGCCACTGAGATCCTCTACCTCACTGTGGCCTATGACTGGTTC
 TCTTCGGGCACATGTTGGTAGATCGGCTCAGCAAAGGGGAGGAGATTTTCTTCTTCAATTTTTT
 GAAGCATATTACCTCCGAGGAGTTCTCTGCTCTGAAGACCAGAGGAGGAAGAGTTTGCCAGCCGGGAT
 GGAGGCTTACCCTGGAAGACATCTGCATGCTGAGACGAAAGGACCGTGGCAGCACCACCAGCCTTGGCA
 GCGACTTCTCCCTGGTATGGAGAGTTCCCGAGGACCACTGGGAGCTTACCTATGAGGCCGTGGAGCT
 GGTCCCAGCAGGAGCGCAACTCAGGCAGCTTGGAGGAAGAGCCACTCATCTCTCCACAGAGTGCCTC
 TGGAACCGGCCACAACCCTCAGAGGACCGCTTGCCTTCCAGCAGGGGCTGGCGGAAGCCAGGTCTTCCA
 GCTCCTTCTCAAACCATTCTGATAACTTTTTCAGGATGGGTAGCAGTCCCCTGGAGGTCCCAAACC
 CAGGCTTGAGCCCTGAGTATCGAGAGACTCGGCTGCAGGAGGTGCGCTCAGCCTTCTTGGCTGCGTAC
 AGCAGCACAGTGGGGCTTCGGGCAGTAGCCCCAGTCTTCCGGTGCCATCGGGGCCTGCTGGAGCAAT
 TTGCCCGTGGTGTGGACTCCGGAGCATCAGCAGCAATGCCTT

ACGCGTACGCGGCCGCTCGAGCAGAAACTCATCTCAGAAGAGGATCTGGCAGCAAATGATATCCTGGATT
 ACAAGGATGACGACGATAAGGTTTAA

Protein Sequence:

>RC208660 protein sequence
 Red=Cloning site Green=Tags(s)

MAGARAAAAASAGSSASSGNQPPQELGLGELLEEFSTQYRAKDGSGTGGSKVERIEKRCLLEFGRDYC
 FSVIPNTNGDIGHYPRHIVFLEYESSEKEKDTFESTVQVSKLQDLIHRSKMARCRGRFVCPVILFKGKH
 ICRSATLAGWELYGRSGYNYFFSGGADDAWADVEDVTEEDCALRSGDTHLFDKVRGYDIKLLRYLSVKY
 ICDLMVENKVKFGMNVTSSEKVDKAQRYADFTLLSIPYPGCEFFKEYKDRDYMAEGLIFNWKQDYVDAP
 LSIPDFLTHSLNIDWSQYQCWDLVQQTQNYLKLKLLSLVNSDDSGLLVHCISGWDRTPFLISLLRSLWA
 DGLIHTSLKPTEILYLTVAYDWFLFGHMLVDRLSKGEEIFFFCFNFLKHITSEEFSAKLTQRRKSLPARD
 GGFTELEDICMLRRKDRGTTSLGSDFLVMESPPGATGSFTYEAVELVPAGAPTQAARWKSHPSSPQSVL
 WNRQPSEDRLPSQQGLAEARSSSSSSNSDNNFFRMGSSPLEVPKPRLAALSDRETRLQEVRSFAFLAAY
 SSTVGLRAVAPSPSGAIGGLLEQFARGVGLRSISSNAL

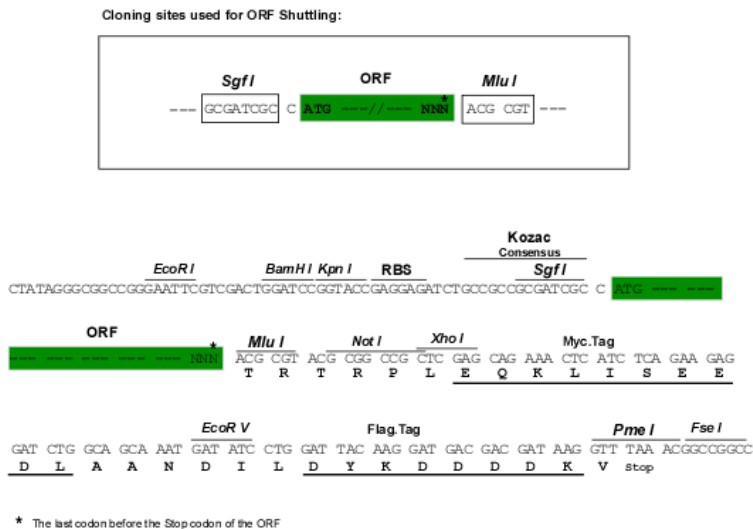
TRTRPLEQKLISEEDLAANDILDYKDDDDKV

Chromatograms:

https://cdn.origene.com/chromatograms/mk6760_a04.zip

Restriction Sites: SgfI-MluI

Cloning Scheme:



ACCN: NM_001077526

ORF Size: 1794 bp

OTI Disclaimer: The molecular sequence of this clone aligns with the gene accession number as a point of reference only. However, individual transcript sequences of the same gene can differ through naturally occurring variations (e.g. polymorphisms), each with its own valid existence. This clone is substantially in agreement with the reference, but a complete review of all prevailing variants is recommended prior to use. [More info](#)

OTI Annotation: This clone was engineered to express the complete ORF with an expression tag. Expression varies depending on the nature of the gene.

Components: The ORF clone is ion-exchange column purified and shipped in a 2D barcoded Matrix tube containing 10ug of transfection-ready, dried plasmid DNA (reconstitute with 100 ul of water).

Reconstitution Method:

1. Centrifuge at 5,000xg for 5min.
2. Carefully open the tube and add 100ul of sterile water to dissolve the DNA.
3. Close the tube and incubate for 10 minutes at room temperature.
4. Briefly vortex the tube and then do a quick spin (less than 5000xg) to concentrate the liquid at the bottom.
5. Store the suspended plasmid at -20°C. The DNA is stable for at least one year from date of shipping when stored at -20°C.

RefSeq: [NM_001077526.3](#)

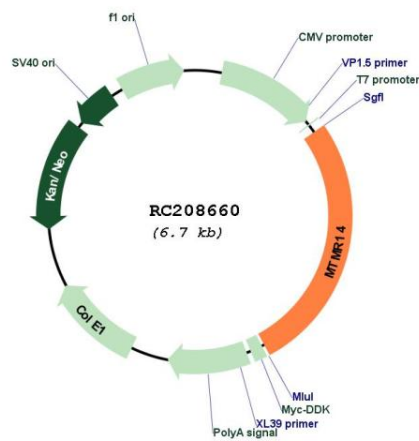
RefSeq Size: 2380 bp

RefSeq ORF: 1797 bp

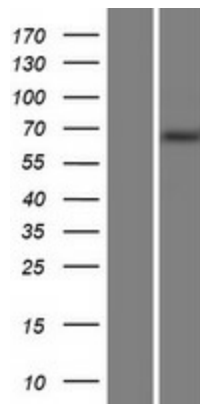
Locus ID: 64419

UniProt ID: [Q8NCE2](#)
Cytogenetics: 3p25.3
Protein Families: Druggable Genome, Phosphatase, Secreted Protein
MW: 66.7 kDa
Gene Summary: This gene encodes a myotubularin-related protein. The encoded protein is a phosphoinositide phosphatase that specifically dephosphorylates phosphatidylinositol 3,5-biphosphate and phosphatidylinositol 3-phosphate. Mutations in this gene are correlated with autosomal dominant centronuclear myopathy. Alternate splicing results in multiple transcript variants. A pseudogene of this gene is found on chromosome 18.[provided by RefSeq, Apr 2010]

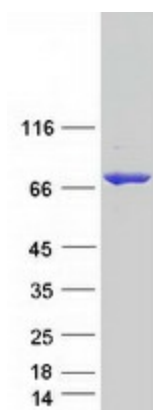
Product images:



Circular map for RC208660



Western blot validation of overexpression lysate (Cat# [LY421458]) using anti-DDK antibody (Cat# [TA50011-100]). Left: Cell lysates from untransfected HEK293T cells; Right: Cell lysates from HEK293T cells transfected with RC208660 using transfection reagent MegaTran 2.0 (Cat# [TT210002]).



Coomassie blue staining of purified MTMR14 protein (Cat# [TP308660]). The protein was produced from HEK293T cells transfected with MTMR14 cDNA clone (Cat# RC208660) using MegaTran 2.0 (Cat# [TT210002]).