

Product datasheet for **RC208651**

POLR1H (NM_170783) Human Tagged ORF Clone

Product data:

Product Type: Expression Plasmids
Product Name: POLR1H (NM_170783) Human Tagged ORF Clone
Tag: Myc-DDK
Symbol: POLR1H
Synonyms: A12.2; HTEX-6; HTEX6; hZR14; Rpa12; tctex-6; TCTEX6; TEX6; ZNRD1; ZR14
Mammalian Cell Selection: Neomycin
Vector: pCMV6-Entry (PS100001)
E. coli Selection: Kanamycin (25 ug/mL)
ORF Nucleotide Sequence: >RC208651 ORF sequence
 Red=Cloning site Blue=ORF Green=Tags(s)

TTTTGTAATACGACTCACTATAGGGCGGCCGGAATTCGTCGACTGGATCCGGTACCGAGGAGATCTGCC
 GCC**CGATCGCC**

ATGTCTGTGATGGACCTCGCCAATACTTGCTCCAGCTTTCAGTCGGACCTGGATTCTGTTTCAGATTGCG
 GCTCGGTCCTGCCTGCCCCGGGGCTCAGGATACGGTACCTGTATTGCTGTGGCTTCAACATCAACGT
 TCGGGACTTTGAGGGGAAGGTTGTGAAGACTTCGGTTGTGTTCCACCAACTGGGGACAGCCATGCATG
 TCGGTGGAGGAAGGGCTGAGTGCCAGGGACCTGTGGTTGACAGGCGCTGCCCTCGATGTGGTCATGAAG
 GAATGGCATAACCACACCAGACAAATGCGTTCAGCCGATGAAGGGCAAAGTCTTCTACACCTGTACCAA
 CTGCAAGTTCAGGAGAAGGAAGACTCT

ACGCGTACGCGGCCGCTCGAGCAGAAACTCATCTCAGAAGAGGATCTGGCAGCAAATGATATCCTGGATT
 ACAAGGATGACGACGATAAGGTTTAA

Protein Sequence: >RC208651 protein sequence
 Red=Cloning site Green=Tags(s)
 MSVMDLANTCSSFQSDLDFCSDCGSVLPLPGAQDTVTCIRCGFNINVRDFEGKVVKTSVVFHQLGTAMP
 SVEEGPECQGPVDRRCPRCGHEGMAYHTRQMRSADEGQTVFYTCTNCKFQEKEDS

TRTRPLEQK**L**ISEEDLAANDILDYKDDDDKV

Chromatograms: https://cdn.origene.com/chromatograms/mk6266_g12.zip

Restriction Sites: SgfI-MluI



[View online »](#)

Cloning Scheme:



ACCN: NM_170783

ORF Size: 378 bp

OTI Disclaimer: The molecular sequence of this clone aligns with the gene accession number as a point of reference only. However, individual transcript sequences of the same gene can differ through naturally occurring variations (e.g. polymorphisms), each with its own valid existence. This clone is substantially in agreement with the reference, but a complete review of all prevailing variants is recommended prior to use. [More info](#)

OTI Annotation: This clone was engineered to express the complete ORF with an expression tag. Expression varies depending on the nature of the gene.

Components: The ORF clone is ion-exchange column purified and shipped in a 2D barcoded Matrix tube containing 10ug of transfection-ready, dried plasmid DNA (reconstitute with 100 ul of water).

- Reconstitution Method:**
1. Centrifuge at 5,000xg for 5min.
 2. Carefully open the tube and add 100ul of sterile water to dissolve the DNA.
 3. Close the tube and incubate for 10 minutes at room temperature.
 4. Briefly vortex the tube and then do a quick spin (less than 5000xg) to concentrate the liquid at the bottom.
 5. Store the suspended plasmid at -20°C. The DNA is stable for at least one year from date of shipping when stored at -20°C.

Note: Plasmids are not sterile. For experiments where strict sterility is required, filtration with 0.22um filter is required.

RefSeq: [NM_170783.4](#)

RefSeq Size: 885 bp

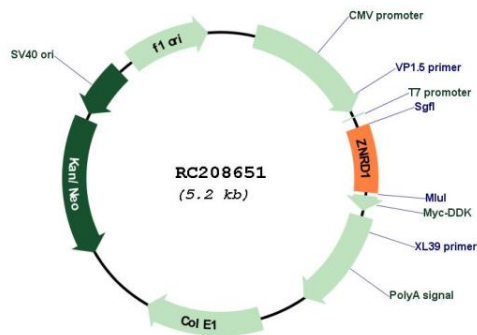
RefSeq ORF: 381 bp

Locus ID: 30834
UniProt ID: [Q9P1U0](#)
Cytogenetics: 6p22.1

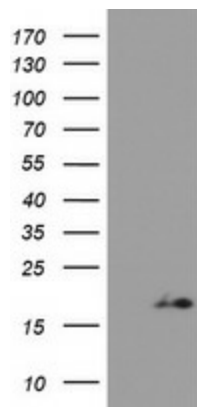
Protein Families: Transcription Factors
Protein Pathways: Metabolic pathways, Purine metabolism, Pyrimidine metabolism, RNA polymerase
MW: 13.9 kDa

Gene Summary: This gene encodes a DNA-directed RNA polymerase I subunit. The encoded protein contains two potential zinc-binding motifs and may play a role in regulation of cell proliferation. The encoded protein may be involved in cancer and human immunodeficiency virus progression. Alternative splicing results in multiple transcript variants. [provided by RefSeq, Jul 2013]

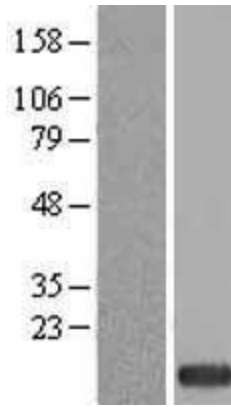
Product images:



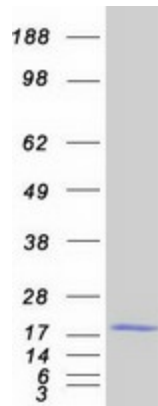
Circular map for RC208651



HEK293T cells were transfected with the pCMV6-ENTRY control (Cat# [PS100001], Left lane) or pCMV6-ENTRY ZNRD1 (Cat# RC208651, Right lane) cDNA for 48 hrs and lysed. Equivalent amounts of cell lysates (5 ug per lane) were separated by SDS-PAGE and immunoblotted with anti-ZNRD1 (Cat# [TA505067]). Positive lysates [LY406880] (100ug) and [LC406880] (20ug) can be purchased separately from OriGene.



Western blot validation of overexpression lysate (Cat# [LY406880]) using anti-DDK antibody (Cat# [TA50011-100]). Left: Cell lysates from untransfected HEK293T cells; Right: Cell lysates from HEK293T cells transfected with RC208651 using transfection reagent MegaTran 2.0 (Cat# [TT210002]).



Coomassie blue staining of purified ZNRD1 protein (Cat# [TP308651]). The protein was produced from HEK293T cells transfected with ZNRD1 cDNA clone (Cat# RC208651) using MegaTran 2.0 (Cat# [TT210002]).