

Product datasheet for **RC208647**

FAM113A (PCED1A) (NM_022760) Human Tagged ORF Clone

Product data:

Product Type:	Expression Plasmids
Product Name:	FAM113A (PCED1A) (NM_022760) Human Tagged ORF Clone
Tag:	Myc-DDK
Symbol:	FAM113A
Synonyms:	bA12M19.1; C20orf81; FAM113A
Mammalian Cell Selection:	Neomycin
Vector:	pCMV6-Entry (PS100001)
E. coli Selection:	Kanamycin (25 ug/mL)



[View online »](#)

ORF Nucleotide Sequence:

>RC208647 ORF sequence
 Red=Cloning site Blue=ORF Green=Tags(s)

TTTTGTAATACGACTCACTATAGGGCGGCCGGGAATTCGTCGACTGGATCCGGTACCGAGGAGATCTGCC
 GCC**CGGATCGCC**

ATGGTCTTCTGTCTGTCTGAGCGAGGAGCCGCGCCGCCCGCTGCGAAGCGACATGGTCCACTTCCAGGCCT
 CGGAAGTCCAGCAGCTGCTACACAACAAGTTCGTGGTCATCTTGGGGACTCCATTAGAGGGCTGTGTA
 CAAGGACCTGGTCTTCTGCTCCAGAAAGACTCACTGCTCACAGCTGCCAGCTGAAAGCCAAGGGGAG
 CTGAGCTTTGAACAGGACCAGCTGGTGGCTGGGGCCAGCTGGGCGAGCTGCACAACGGGACACAGTATC
 GTGAGGTCGCCAGTTCTGCTCGGGCTCTGGCCACCACCTTGTCGCTTCTACTTCTCACTCGTGTTTA
 CTCCGAGTACCTGAGGATGTTCTGGAAGAGCTGACATATGGACCTGCCCGGACCTGGTATCATCAAC
 TCCTGCCTCTGGGATCTCTCCAGATATGGTCGCTCAATGGAGAGCTACCGGGAGAACCTGGAGCGGG
 TGTTTGTGCGCATGGACCAAGTATTGCCAGACTCTGCCTGCTGGTGTGGAACATGGCGATGCCCTCGG
 GGACGTATCACTGGGGTTTCTCCTGCCAGAGCTCCAGCCCTGGCAGGCTCCCTGCGCGGGGATGTG
 GTTGAAGGGAACCTTACAGTGTACGCTGGCCGGGGACCACTGCTTTGATGTCTAGACCTCCACTTTC
 ACTTCCGGCATGCAGTACAGCACCGTATCGGGATGGTGTCCACTGGGACCAGCATGCACACCGCCACCT
 CTCACACCTGTTCTGACCCATGTGGCTGACGCCTGGGGCGTGGAGCTGCCAAGCGTGGTATCCCCCT
 GACCCGTGGATTGAGGACTGGGCAGAGATGAATCATCCATTCCAGGGAAGCCATAGGCAGACCCAGACT
 TCGGGGAGCACCTGGCCTTGCTCCACCCCCACCTTCTTCTTGCCTCCTCCATGCCTTTTCCCTACCC
 GCTTCTCAGCCCTGCCACCTCCCCTCTCCACCCCTGCCAGGATACCCCTTTTTTCCAGGCCAG
 CCCTTCCACCCCATGAATTCTCAACTATAATCCAGTGGAGACTTCTCGATGCCACCCCACTTAGGAT
 GTGGCCCTGGAGTGAACCTTGTGCTGGCCCTTGCACCTCCAATCCCTGGCCCTAATCCCATGGTCA
 GCACTGGGGCCAGTGGTCCACCGGGGATGCCACGCTATGTTCCCTAACAGCCCTACCATGTGCGGAGA
 ATGGGGGGCCCTGCAGGCAGCGCTCAGACACTCAGAGAGACTGATCCACATACAACTGGACAGAC
 GCCTCCTGCCATTGGGGACATGGCCTGGG

ACGCGTACGCGGCCGCTCGAGCAGAACTCATCTCAGAAGAGGATCTGGCAGCAAATGATATCCTGGATT
 ACAAGGATGACGACGATAAGGTTTAA

Protein Sequence:

>RC208647 protein sequence
 Red=Cloning site Green=Tags(s)

MVFCLSSEEP RRPLRSDMVHFQASEVQQLLHNKFVVILGDSIQRAVYKDLVLLLQKDSLLTAAQLKAKGE
 LSFEQDQLVAGGQLGELHNGTQYREVRQFCSGSGHHLVRFYFLTRVYSEYLEEDVLEELTYGPAPDLVIIN
 SCLWDL SRYGRCSMESYRENLERVVRMDQVLPDSCLLVWNMAMPLGERITGGFLLPELQPLAGSLRRDV
 VEGNFYSATLAGDHCDFVLDLHFHFRHAVQHRHRDGVHWDQHHRHL SHLLLTHVADAWGVELPKRGYPP
 DPWIEDWAEMNHPFQGSHRQTPDFGEHLALLPPPPSSLPPMPFPYPLPQPSPPLFPPLPQDTPFFPGQ
 PFPPEFFNYNPVEDFSMPHLLGCGPVNFVPGPLPPP IPGPNPHGQHWGPVVHRGMPRYVPNSPYHVR
 MGGPCRQLRHSERLIHTYKLD RPPAHS GTWPG

TRTRPLEQKLISEEDLAANDILDYKDDDDKV

Chromatograms:

https://cdn.origene.com/chromatograms/mk6361_h08.zip

Restriction Sites:

Sgfl-Mlul

Cloning Scheme:


ACCN: NM_022760

ORF Size: 1362 bp

OTI Disclaimer: The molecular sequence of this clone aligns with the gene accession number as a point of reference only. However, individual transcript sequences of the same gene can differ through naturally occurring variations (e.g. polymorphisms), each with its own valid existence. This clone is substantially in agreement with the reference, but a complete review of all prevailing variants is recommended prior to use. [More info](#)

OTI Annotation: This clone was engineered to express the complete ORF with an expression tag. Expression varies depending on the nature of the gene.

Components: The ORF clone is ion-exchange column purified and shipped in a 2D barcoded Matrix tube containing 10ug of transfection-ready, dried plasmid DNA (reconstitute with 100 ul of water).

- Reconstitution Method:**
1. Centrifuge at 5,000xg for 5min.
 2. Carefully open the tube and add 100ul of sterile water to dissolve the DNA.
 3. Close the tube and incubate for 10 minutes at room temperature.
 4. Briefly vortex the tube and then do a quick spin (less than 5000xg) to concentrate the liquid at the bottom.
 5. Store the suspended plasmid at -20°C. The DNA is stable for at least one year from date of shipping when stored at -20°C.

RefSeq: [NM_022760.6](#)

RefSeq Size: 2041 bp

RefSeq ORF: 1365 bp

Locus ID: 64773

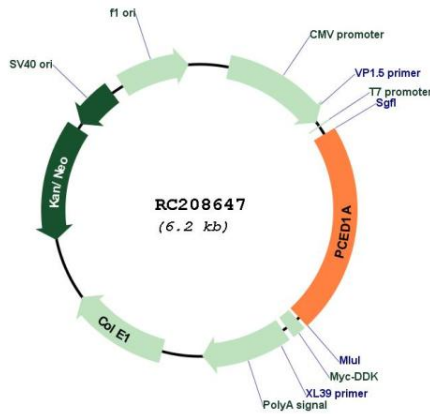
UniProt ID: [Q9H1Q7](#)

Cytogenetics: 20p13

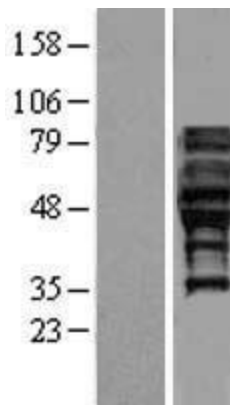
MW: 51.8 kDa

Gene Summary: The protein encoded by this gene is a member of the GDSL/SGNH superfamily. Members of this family are hydrolytic enzymes with esterase and lipase activity and broad substrate specificity. This protein belongs to the Pmr5-Cas1p-esterase subfamily in that it contains the catalytic triad comprised of serine, aspartate and histidine and lacks two conserved regions (glycine after strand S2 and GxND motif). A pseudogene of this gene has been identified on the long arm of chromosome 2. Alternative splicing results in multiple transcript variants that encode different protein isoforms. [provided by RefSeq, Sep 2012]

Product images:



Circular map for RC208647



Western blot validation of overexpression lysate (Cat# [LY411578]) using anti-DDK antibody (Cat# [TA50011-100]). Left: Cell lysates from untransfected HEK293T cells; Right: Cell lysates from HEK293T cells transfected with RC208647 using transfection reagent MegaTran 2.0 (Cat# [TT210002]).