

Product datasheet for **RC208643**

APOL3 (NM_145639) Human Tagged ORF Clone

Product data:

Product Type:	Expression Plasmids
Product Name:	APOL3 (NM_145639) Human Tagged ORF Clone
Tag:	Myc-DDK
Symbol:	APOL3
Synonyms:	apoL-III; APOLIII; CG12_1; CG121
Mammalian Cell Selection:	Neomycin
Vector:	pCMV6-Entry (PS100001)
E. coli Selection:	Kanamycin (25 ug/mL)
ORF Nucleotide Sequence:	>RC208643 ORF sequence Red=Cloning site Blue=ORF Green=Tags(s)

TTTTGTAATACGACTCACTATAGGGCGGCCGGAATTCGTCGACTGGATCCGGTACCGAGGAGATCTGCC
GCC**CGGATCGCC**

ATGGACTCAGAAAAGAAACGCTTTACTGAAGAGGCCACCAATACTTCCGGGAGAGAGTCAGCCCAGTGC
ATCTGCAAATCCTGCTGACTAACAATGAAGCCTGGAAGAGATTCGTGACTGCGGCTGAATTGCCAGGGA
TGAGGCAGATGCTCTACGAAGCTCTGAAGAAGCTTAGAACATATGCAGCTATTGAGGACGAATATGTG
CAGCAGAAAGATGAGCAGTTTAGGGAATGGTTTTGAAAGAGTTCCCCAAGTCAAGAGGAAGATCCAGG
AGTCCATAGAAAAGCTTCGTGCCCTTGCAAATGGTATTGAAGAGGTCCACAGAGGCTGCACCATCTCAA
TGTGGTGTCCAGCTCCACTGGCGCTGCCTCTGGCATCATGTCCCTTGCTGGTCTTGTGGCACCATT
ACAGCAGGGACGAGTCTGGCCCTTACTGCAGCTGGGGTAGGGCTGGGAGCAGCGTCTGCTGTGACTGGGA
TCACCACCAGCATCGTGGAGCACTCATACACATCATCAGCAGAAGCTGAAGCCAGCAGGCTGACTGCAAC
CAGCATTGACCGATTGAAGGATTTAAGGAAGTTATGCGTGACATCACACCCAACCTACTTTCCCTTCTT
AATAATTATTACGAAGCCACACAAACCATTGGGAGTGAATCCGTGCCATCAGGCAAGCCAGAGCCAGGG
CCCAGCTCCCTGTGACCACCTGGCGAATCTCAGCTGGAAGTGGTGGTCAAGCAGAGAGAACGATTGCAGG
CACCACCCGGGCAGTGAGCAGAGGAGCCCGGATCCTGAGTGCACCACTCAGGCATCTTCTTGCAGTG
GATGTGGTCAACCTTGTATACGAGTCAAAGCACTTGCATGAGGGGCAAAGTCTGCATCTGCTGAGGAGC
TGAGGCGCAGGCTCAGGAGCTGGAGGAGAATCTAATGGAGCTCACTCAGATCTATCAGCGTCTGAATCC
ATGCCATACCCAC

ACGCGTACGCGGCCGCTCGAGCAGAACTCATCTCAGAAGAGGATCTGGCAGCAAATGATATCCTGGATT
ACAAGGATGACGACGATAAGGTTTAA



[View online »](#)

Protein Sequence: >RC208643 protein sequence
Red=Cloning site Green=Tags(s)

MDSEKKRFTEEATKYFRERVSPVHLQILLTNNEAWKRFVTAELPRDEADALYEALKKLRTYAAIEDEYV
 QQKDEQFREWFLKEFPQVKRKIQESIEKLRALANGIEEVHRGCTISNVVSSSTGAASGIMSLAGLVLAPF
 TAGTSLALTAAGVGLGAASAVTGITTSIVEHSYSSAEAEASRLTATSIDRLKVFKEVMRDITPNLLSLL
 NNYYEATQTIGSEIRAIRQARARARLPVTTWRISAGSGGQAERTIAGTTRAVSRGARILSATTSGIFLAL
 DVVNLVYESKHLHEGAKSASAEELRRQAQLEENLMELTQIYQRLNPCHTH

TRTRPLEQKLISEEDLAANDILDYKDDDDKV

Chromatograms: https://cdn.origene.com/chromatograms/mk6366_e05.zip

Restriction Sites: SgfI-MluI

Cloning Scheme:



ACCN: NM_145639

ORF Size: 993 bp

OTI Disclaimer: The molecular sequence of this clone aligns with the gene accession number as a point of reference only. However, individual transcript sequences of the same gene can differ through naturally occurring variations (e.g. polymorphisms), each with its own valid existence. This clone is substantially in agreement with the reference, but a complete review of all prevailing variants is recommended prior to use. [More info](#)

OTI Annotation: This clone was engineered to express the complete ORF with an expression tag. Expression varies depending on the nature of the gene.

Components: The ORF clone is ion-exchange column purified and shipped in a 2D barcoded Matrix tube containing 10ug of transfection-ready, dried plasmid DNA (reconstitute with 100 ul of water).

Reconstitution Method:

1. Centrifuge at 5,000xg for 5min.
2. Carefully open the tube and add 100ul of sterile water to dissolve the DNA.
3. Close the tube and incubate for 10 minutes at room temperature.
4. Briefly vortex the tube and then do a quick spin (less than 5000xg) to concentrate the liquid at the bottom.
5. Store the suspended plasmid at -20°C. The DNA is stable for at least one year from date of shipping when stored at -20°C.

RefSeq: [NM_145639.2](#)

RefSeq Size: 2215 bp

RefSeq ORF: 996 bp

Locus ID: 80833

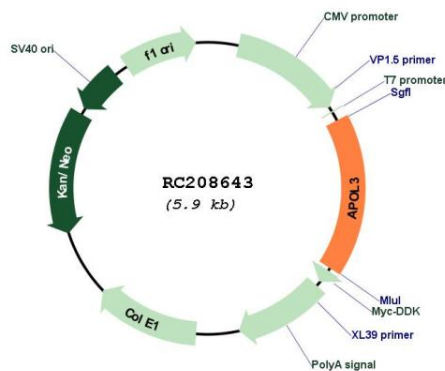
UniProt ID: [O95236](#)

Cytogenetics: 22q12.3

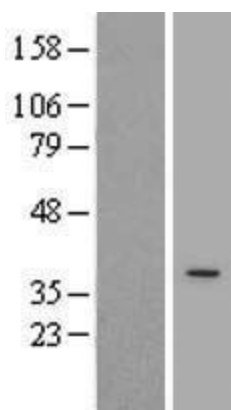
MW: 36.5 kDa

Gene Summary: This gene is a member of the apolipoprotein L gene family, and it is present in a cluster with other family members on chromosome 22. The encoded protein is found in the cytoplasm, where it may affect the movement of lipids, including cholesterol, and/or allow the binding of lipids to organelles. In addition, expression of this gene is up-regulated by tumor necrosis factor-alpha in endothelial cells lining the normal and atherosclerotic iliac artery and aorta. Alternative splicing results in multiple transcript variants. [provided by RefSeq, Mar 2015]

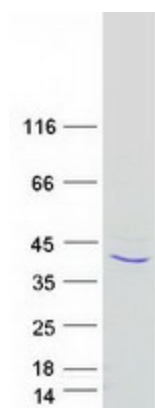
Product images:



Circular map for RC208643



Western blot validation of overexpression lysate (Cat# [LY410766]) using anti-DDK antibody (Cat# [TA50011-100]). Left: Cell lysates from untransfected HEK293T cells; Right: Cell lysates from HEK293T cells transfected with [RC218012] using transfection reagent MegaTran 2.0 (Cat# [TT210002]).



Coomassie blue staining of purified APOL3 protein (Cat# [TP308643]). The protein was produced from HEK293T cells transfected with APOL3 cDNA clone (Cat# RC208643) using MegaTran 2.0 (Cat# [TT210002]).