

Product datasheet for **RC208639**

APCDD1 (NM_153000) Human Tagged ORF Clone

Product data:

Product Type:	Expression Plasmids
Product Name:	APCDD1 (NM_153000) Human Tagged ORF Clone
Tag:	Myc-DDK
Symbol:	APCDD1
Synonyms:	B7323; DRAPC1; FP7019; HHS; HTS; HYPT1
Mammalian Cell Selection:	Neomycin
Vector:	pCMV6-Entry (PS100001)
E. coli Selection:	Kanamycin (25 ug/mL)



[View online »](#)

ORF Nucleotide Sequence:

>RC208639 ORF sequence
 Red=Cloning site Blue=ORF Green=Tags(s)

TTTTGTAATACGACTCACTATAGGGCGGCCGGAATTCGTCGACTGGATCCGGTACCGAGGAGATCTGCC
 GCC**CGGATCGCC**

ATGTCCTGGCCGCGCCCTCTGCTCAGATACCTGTTCCCGGCCCTCTGCTTACGGGCTGGGAGAGG
 GTTCTGCCCTCCTTCATCCAGACAGCAGGTCTCATCCTAGGTCCTTAGAGAAAAGTGCCTGGAGGGCTTT
 TAAGGAGTCACAGTGCCATCACATGCTCAAACATCTCCACAATGGTGCAAGGATCACAGTGCAGATGCCA
 CCTACAATCGAGGGCCACTGGGTCTCCACAGGCTGTGAAGTAAGGTGAGGCCAGAGTTCATCACAAAGT
 CCTACAGATTCTACCACAATAACACCTTCAAGGCCTACCAATTTTATTATGGCAGCAACCGGTGCACAAA
 TCCCACTTATACTCTCATCATCCGGGGCAAGATCCGCCTCCGCCAGGCCTCTGGATCATCCGAGGGGGC
 ACGGAAGCCGACTACCAGCTGCACAACGTCCAGGTGATCTGCCACACAGAGGGCGGTGGCCGAGAAGCTCG
 GCCAGCAGGTGAACCGCACATGCCCGGGCTTCTCGCAGACGGGGTCCCTGGGTGCAGGACGTGGCCTA
 TGACCTCTGGCGAGAGGAGAACGGCTGTGAGTGCACCAAGGCCGTGAACCTTGGCATGCATGAATTCAG
 CTATCCGGGTGGAGAAGCAGTACCTTACCACAACCTCGACCACCTGGTCGAGGAGCTCTCTTGGTG
 ACATTCACACTGATGCCACCCAGAGGATGTTCTACCGGCCCTCCAGTTACCAGCCCCCTCTGCAGATGC
 CAAGAACCACGACCATGCCTGCATCGCCTGTGGATCATCTATCGGTGAGACGAGCACCACCTCCCATC
 CTGCCCCAAAGGCAGACCTGACCATCGGCCTGCACGGGGAGTGGGTGAGCCAGCGCTGTGAGGTGGCC
 CCGAAGTCTCTTCTCACCCGCCACTTCTTCCATGACAACAACAACACCTGGGAGGGCCACTACTA
 CCACTACTCAGACCCGGTGTGCAAGCACCCACCTTCTCCATCTACGCCGGGGCCGCTACAGCCGGCC
 GTCCTCTCGTCCAGGGTATGGGAGCCAGGATTCGTGTTCAAAGTGAATCACATGAAGTCCACCCCA
 TGGATGCGGGCACAGCCTCACTGCTCAAGTCTTCAACGGGAATGAGTGGGGGGCCGAGGGCTCCTGGCA
 GGTGGGCATCCAGCAGGATGTGACCCACCAATGGCTGCGTGGCCCTGGGCATCAAACCTCACACG
 GAGTACGAGATCTTCAAATGGAACAGGATGCCCGGGGGCGCTATCTGCTGTTCAACGGTCAGAGGCCCA
 GCGACGGTCCAGCCAGACAGGCCAGAGAAGAGGCCACGTCCTACCAGATGCCCTTGGTCCAGTGTGC
 CTCCTCTCGCCGAGGGCAGAGGACCTCGCAGAAGACAGTGAAGCAGCCTGTATGGCCGGGCCCTGGG
 AGGCACACCTGGTCCCTGCTGCTGGCTGCCTGCCTGTCCCTCTGCTGCATTGGAACATCCGCA
 GA

ACGCGTACGCGGCCGCTCGAGCAGAAACTCATCTCAGAAGAGGATCTGGCAGCAAATGATATCCTGGATT
 ACAAGGATGACGACGATAAGGTTTAA

Protein Sequence:

>RC208639 protein sequence
 Red=Cloning site Green=Tags(s)

MSWPRLLLLRYLFPALLLHGLGEGSALLHPDSRSHPRSLEKSAWRAFKESQCHHMLKHLHNGARITVQMP
 PTIEGHVSTGCEVRSGPEFITRSYRFYHNNTFKAYQFYGNSRCTNPTYTLIIRGKIRLRQASWIIRGG
 TEADYQLHNVQVICHTEAVAELKQQVNRTPGFLADGGPWVQDVAYDLWREENGCECTKAVNFAMHELQ
 LIRVEKQYLHNLHDLVEELFLGDIHTDATQRMFYRPSYQPPLQNAKNHDHACIACRIIYRSDEHHPPI
 LPPKADLTIGLHGEWVSQRCEVRPEVFLTRHFIFHDNNNTWEGHYHYSDPVCKHPTFSIYARGRYSRG
 VLSSRVMGTEFVFKVNHMKVTPMDAATASLLNVFNENECGAEGSWQVGIQQDVTHTNGCVLGIKLPHT
 EYEIFKMEQDARGRYLLFNGQRPSDSSPDRPEKRATSYQMPLVQCASSPRAEDLAEDSGSSLYGRAPG
 RHTWSLLLLAALACLVPLLHWNIRR

TRTRPLEQKLISEEDLAANDILDYKDDDDKV

Chromatograms:

https://cdn.origene.com/chromatograms/mk6070_h11.zip

Restriction Sites:

Sgfl-MluI

Cloning Scheme:


ACCN: NM_153000

ORF Size: 1542 bp

OTI Disclaimer: The molecular sequence of this clone aligns with the gene accession number as a point of reference only. However, individual transcript sequences of the same gene can differ through naturally occurring variations (e.g. polymorphisms), each with its own valid existence. This clone is substantially in agreement with the reference, but a complete review of all prevailing variants is recommended prior to use. [More info](#)

OTI Annotation: This clone was engineered to express the complete ORF with an expression tag. Expression varies depending on the nature of the gene.

Components: The ORF clone is ion-exchange column purified and shipped in a 2D barcoded Matrix tube containing 10ug of transfection-ready, dried plasmid DNA (reconstitute with 100 ul of water).

- Reconstitution Method:**
1. Centrifuge at 5,000xg for 5min.
 2. Carefully open the tube and add 100ul of sterile water to dissolve the DNA.
 3. Close the tube and incubate for 10 minutes at room temperature.
 4. Briefly vortex the tube and then do a quick spin (less than 5000xg) to concentrate the liquid at the bottom.
 5. Store the suspended plasmid at -20°C. The DNA is stable for at least one year from date of shipping when stored at -20°C.

RefSeq: [NM_153000.5](#)

RefSeq Size: 2579 bp

RefSeq ORF: 1545 bp

Locus ID: 147495

UniProt ID: [Q8I025](#)

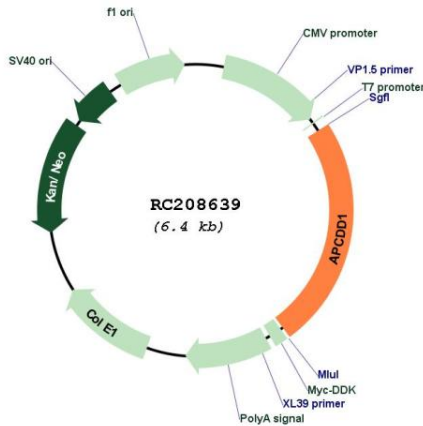
Cytogenetics: 18p11.22

Protein Families: Transmembrane

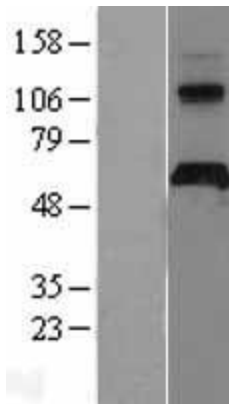
MW: 58.8 kDa

Gene Summary: This locus encodes an inhibitor of the Wnt signaling pathway. Mutations at this locus have been associated with hereditary hypotrichosis simplex. Increased expression of this gene may also be associated with colorectal carcinogenesis.[provided by RefSeq, Sep 2010]

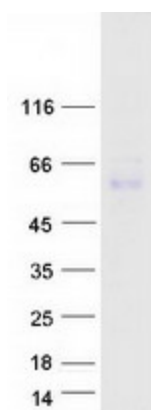
Product images:



Circular map for RC208639



Western blot validation of overexpression lysate (Cat# [LY403498]) using anti-DDK antibody (Cat# [TA50011-100]). Left: Cell lysates from untransfected HEK293T cells; Right: Cell lysates from HEK293T cells transfected with RC208639 using transfection reagent MegaTran 2.0 (Cat# [TT210002]).



Coomassie blue staining of purified APCDD1 protein (Cat# [TP308639]). The protein was produced from HEK293T cells transfected with APCDD1 cDNA clone (Cat# RC208639) using MegaTran 2.0 (Cat# [TT210002]).