

Product datasheet for **RC208635**

N4BP3 (NM_015111) Human Tagged ORF Clone

Product data:

Product Type:	Expression Plasmids
Product Name:	N4BP3 (NM_015111) Human Tagged ORF Clone
Tag:	Myc-DDK
Symbol:	N4BP3
Synonyms:	LZTS4
Mammalian Cell Selection:	Neomycin
Vector:	pCMV6-Entry (PS100001)
E. coli Selection:	Kanamycin (25 ug/mL)



[View online »](#)

ORF Nucleotide Sequence:

>RC208635 ORF sequence
 Red=Cloning site Blue=ORF Green=Tags(s)

TTTTGTAATACGACTCACTATAGGGCGGCCGGAATTCGTCGACTGGATCCGGTACCGAGGAGATCTGCC
 GCC**CGCATCGCC**

ATGGCCACAGCCCAGGCCCTGCTGGCATTGCCATGGGCAGCGTGGGCAGCCTGTTGGAACGGCAGGACT
 TCTCCCTGAAGAGCTGCGGGCGGCACTTGCCGGGTCTCGGGGCTCCCGCCAGCCTGATGGGCTCCTCCG
 GAAGGGCTTGGGCCAGCGTGAGTTCCTCAGCTACCTGCACCTCCCAAGAAGGACAGCAAGACCAAG
 AACACCAAGCGGGCCCTCGGAACGAGCCTGCCGACTATGCCACCTCTACTACCGGGAACATTCTCGCG
 CGGGTGACTTCAGCAAGCCTCGCTGCCAGAACGGGTGCTTTGACAAGTGCCGATTGCCCCCTCAGT
 GTTCAAGCCTACGGCGGCAACGGGAAAGGTTCTATCCATGCAAAGCCTGGCGTCCACAAAGGCCAG
 AAGCTGTGGCGCAGCAATGGCAGCCTGCACACGCTGGCCTGCCACCCGCCCTGAGCCCCGGGCCCCAGG
 CCAGCCAGGCCCGGCACAGCTGCTGCACGCCCTCAGCCTAGATGAGGGCGGCCCTGAGCCCAGGCCAG
 CCTGTCCGACTCCTCCAGTGGGGTAGTTTTGGTTCGAGTCTGGTACTGGCCCTAGCCCCTCAGCTCC
 TCCTTGGCCACCTTAACCACCTCGGGGCTCCCTGGACCGGCCCTCAAGGACCAAGGAGGCTGGGC
 CACCAGCTGTGCTGAGCTGCCTGCCGAGCCACACCCCTACGAGTTCCTGCTCCTGCTGCCGAGGA
 AATGGGAGCCGTGCTGCCGAGACCTGTGAGGAGCTCAAGAGGGGCTTGGCGATGAGGACGGCTCCAAC
 CCCTTACGCAGGTGCTGGAGGAGCGCCAGCGGCTGTGGCTGGCTGAGCTGAAGCGCCTGTATGTGGAGC
 GGCTGCACGAGGTGACCCAGAAGGCTGAGCGCAGCGAGCGCAACCTCCAGCTGCAGCTGTTTATGGCTCA
 GCAGGAGCAGCGGCCCTGCGCAAGGAGCTGCGGGCTCAGCAGGGCTGGCTCCGGAGCCTCGGGCCCC
 GGCACCTCCCAGAGGCTGACCCAGTGCACGACCAGAGGAGGAAGCCCGATGGGAGGTGTGCCAGAAGA
 CAGCAGAGATTAGCCTCTTGAAGCAGCAGCTGCGTGAAGCCAGCGGAACTGGCCAGAAGCTGGCGGA
 GATCTTCACTGAAGACACAACCTTCGGGCGAGCCGGGCAAGGCCAGGCTCAGGACGCAGAGCTGGTC
 CGGCTGCGCAGGCTGTGCGCAGCCTGCAGGAGCAGGCCCTCGGGAGGAAGCCAGGCAGCTGTGAGA
 CTGATGACTGCAAGAGCAGGGGCTGCTAGGGGAGGCAGGAGGCAGCGAGGCCAGAGACAGTGTGAGCA
 GCTGCGGGCTGAGCTGCTGCAGGAGCGACTTCGGGGCCAGGAGCAGGCGCTGCGCTTTGAGCAGGAGCGG
 CGGACTTGGCAGGAGGAGAAGGAGCGGTGCTGCGCTACCAGCGGGAGATCCAGGGAGGGTACATGGACA
 TGTACC CGCAACCAGGCACTGGAGCAGGAAGTGCGGGCACTGCGGGAGCCCCCACACCTGGAGTCC
 CCGGCTCGAGTCTCAAGATC

ACGCGTACGCGGCCGCTCGAGCAGAAACTCATCTCAGAAGAGGATCTGGCAGCAAATGATATCCTGGATT
 ACAAGGATGACGACGATAAGGTTTAA

Protein Sequence:

>RC208635 protein sequence
 Red=Cloning site Green=Tags(s)

MATAPGPAGIAMGSVGSLLERQDF SPEELRAALAGSRGRQPDGLLRKGLGQREFLSYLHLPKKDKSKSTK
 NTKRAPRNEPADYATLYREHSRAGDFSKTSLPERGRFDKCRIRPSVFKPTAGNGKGF LSMQSLASHKGQ
 KLWRSNGSLHTLACHPPLSPGPQASQARAQLLHALSLDEGGPEPEPSLSDSSSGSFGRSPGTGSPFSS
 SLGHLNHLGGSLDRASQGPKEAGPPAVLSCLPEPPPPYEFSCSSAEEMGAVLPETCEELKRGLGDEGDSN
 PFTQVLEERQRLWLAELKRLYVERLHEVTQKAERSERNLQLQLFMAQQEQRRLRKELRAQQGLAPEPRAP
 GTLPEADPSARPEEEARWEVCQKTAEISLLKQQLREAQAE LAQKLAEIFSLKTQLRGSRAQAQAQDAELV
 RLREAVRSLQEAPREEAPGSCE TDDCKSRGLLGEAGGSEARDSAEQLRAELLQERLRGQEALRFEQER
 RTWQEEKERVLRVQREIQGGYMDMYRRNQALEQELRALREPPTPWSPRLESSKI

TRTRPLEQKLI SEEDLAANDILDYKDDDDKV

Chromatograms:

https://cdn.origene.com/chromatograms/mk6671_d11.zip

Restriction Sites:

Sgfl-Mlul

Cloning Scheme:


ACCN: NM_015111

ORF Size: 1632 bp

OTI Disclaimer: The molecular sequence of this clone aligns with the gene accession number as a point of reference only. However, individual transcript sequences of the same gene can differ through naturally occurring variations (e.g. polymorphisms), each with its own valid existence. This clone is substantially in agreement with the reference, but a complete review of all prevailing variants is recommended prior to use. [More info](#)

OTI Annotation: This clone was engineered to express the complete ORF with an expression tag. Expression varies depending on the nature of the gene.

Components: The ORF clone is ion-exchange column purified and shipped in a 2D barcoded Matrix tube containing 10ug of transfection-ready, dried plasmid DNA (reconstitute with 100 ul of water).

Reconstitution Method:

1. Centrifuge at 5,000xg for 5min.
2. Carefully open the tube and add 100ul of sterile water to dissolve the DNA.
3. Close the tube and incubate for 10 minutes at room temperature.
4. Briefly vortex the tube and then do a quick spin (less than 5000xg) to concentrate the liquid at the bottom.
5. Store the suspended plasmid at -20°C. The DNA is stable for at least one year from date of shipping when stored at -20°C.

RefSeq Size: 5987 bp

RefSeq ORF: 1635 bp

Locus ID: 23138

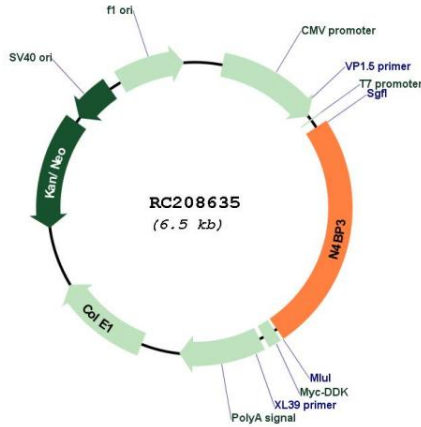
UniProt ID: [O15049](#)

Cytogenetics: 5q35.3

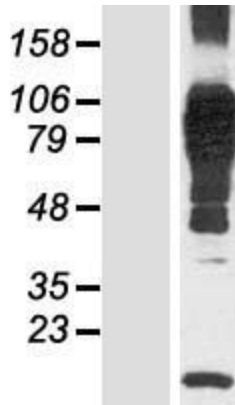
MW: 60.4 kDa

Gene Summary: Plays a role in axon and dendrite arborization during cranial nerve development. May also be important for neural crest migration and early development of other anterior structures including eye, brain and cranial cartilage.[UniProtKB/Swiss-Prot Function]

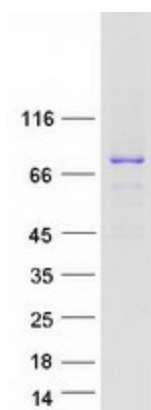
Product images:



Circular map for RC208635



Western blot validation of overexpression lysate (Cat# [LY414797]) using anti-DDK antibody (Cat# [TA50011-100]). Left: Cell lysates from untransfected HEK293T cells; Right: Cell lysates from HEK293T cells transfected with RC208635 using transfection reagent MegaTran 2.0 (Cat# [TT210002]).



Coomassie blue staining of purified N4BP3 protein (Cat# [TP308635]). The protein was produced from HEK293T cells transfected with N4BP3 cDNA clone (Cat# RC208635) using MegaTran 2.0 (Cat# [TT210002]).