

Product datasheet for **RC208630**

ZNF513 (NM_144631) Human Tagged ORF Clone

Product data:

Product Type:	Expression Plasmids
Product Name:	ZNF513 (NM_144631) Human Tagged ORF Clone
Tag:	Myc-DDK
Symbol:	ZNF513
Synonyms:	HMFT0656; RP58; Zfp513
Mammalian Cell Selection:	Neomycin
Vector:	pCMV6-Entry (PS100001)
E. coli Selection:	Kanamycin (25 ug/mL)



[View online »](#)

ORF Nucleotide Sequence:

>RC208630 representing NM_144631
 Red=Cloning site Blue=ORF Green=Tags(s)

TTTTGTAATACGACTCACTATAGGGCGGCCGGAATTCGTCGACTGGATCCGGTACCGAGGAGATCTGCC
 GCC**CGGATCGCC**

ATGCCCGAAGGAAGCAAAGCCACCCGACGCCGCTGAAATGCGAGGGGTCAAAGTGGATACTGAAGACT
 CCCTCGACGAAGGACCCGGGGCCCTGGTATTGGAGAGTATTTGCTACTAGGCCAGGATCTGGAGTTTGA
 GGAGGAAGAGGAAGAGGAGGAAGGCGACGGCAACAGTGACCAGCTCATGGGCTTCGAGAGAGACTCGGAA
 GGAGACTCTCTGGGGGCCAGGCCTGGGCTTCCCTATGGGCTGAGCGACGATGAGTCTGGGGCGGCCGGG
 CACTAAGTGGGAGAGTGAAGTTGAGGAGCCAGCCAGGGGTCCAGGGGAGGCCAGGGGTGAGAGGCCAGG
 CCCAGCCTGCCAGCTGTGTGGGGGGCCGACAGGTGAGGGGCCGTGTTGTGGGGCAGGAGGGCCGGGTGGG
 GGGCCCTGCTGCCCCACGGCTACTGTACTCATGCCCTCTGCACCTTCGTGTCCACTACTCGAGCC
 ACCTGAAGCGGCACATGCAGACACACAGCGGAGAGAAGCCGTTCCGCTGTGGCCGCTGCCCTACGCCCT
 AGCCCAGCTCGTCAACCTGACACGACATACCCGCACCCACTGGCGAGAAGCCCTACCGCTGTCCCAC
 TGCCCTTTGCCTGCAGCAGCCTGGGCAACCTGAGGCGGCATCAGCGTACCCACGAGGGCCCCCCTACTC
 CTCCTGCCCGACCTGTGGCTTCCGCTGCTGTACTCCACGACCAGCCCGGCTCCAGTCCCACAGAGCA
 GGAGGGGGCGGTGCCCGGCGACCTGAAGATGCTCTGCTCCTTCCAGATTTGAGCCTCCATGTGCCACCA
 GGTGGTGCCAGTTTCTGCCAGACTGTGGGCGAGCTGCGGGGTGAAGGGGAGGGCCCTGCGGGACTGGAT
 CAGAACCCTGCCAGAGCTGCTATTCCTTGGACTGCCGGGCTGTGGACAAGAGCTGGAGGAGGGTGA
 GGGTAGTCGGCTGGGAGCTGCCATGTGTGGGCGTGCATGCGAGGAGAGGCTGGAGGGGTGCCAGTGGG
 GGGCCCCAGGGCCCCAGTGACAAAGCCTTTCCTGTAGCCTCTGCCCTTTGCCACTCACTATCCCAACC
 ACCTGGCCCCGCACATGAAGACACACAGTGGTGAAGAAGCCCTTCGCTGCGCCCGCTGCTTATGCCCTC
 TGCTCATCTGGATAACCTGAAACGGCACCCAGCGGTCCATACAGGAGAGAAGCCCTACAAGTGCCCCCTC
 TGCCCTTATGCCTGTGGCAATCTGGCAACCTCAAGCGTCATGGTCGCATCCACTCTGGTGAACAACCTT
 TTCGGTGTAGCCTTTGCAACTACAGCTGCAACCAGAGCATGAACCTCAAACGTCACATGTGCGGCACAC
 AGGCGAGAAGCCCTTCCGCTGTGCCACCTGCGCCTATACCACGGGCCACTGGGACAACATAAAGCGCCAC
 CAGAAGGTGCATGGCCACGGTGGGGCAGGAGGGCCTGGTCTCTCTGCCTCTGAGGGCTGGCCCCACCTC
 ATAGCCACCCCTCTGTTTTGAGCTCTCGGGGCCACCAGCCCTGGGGACTGCTGGCAGCCGGCTGTCCA
 CACAGACTCATCC

ACGCGTACGCGGCCGCTCGAGCAGAAACTCATCTCAGAAGAGGATCTGGCAGCAAATGATATCCTGGATT
 ACAAGGATGACGACGATAAGGTTTAA

Protein Sequence:

>RC208630 representing NM_144631
 Red=Cloning site Green=Tags(s)

MPRRKQSHPPVKCEGVKVDTEDSLDEPGALVLESDLLLGQDLEFEFEFEFEFEEDGNSDQLMGFERDSE
 GDLSLGARPLPYGLSDDES GGRALSAESEVEEPARGPGEARGERPACQLCGGPTGEGPCCGAGGPGG
 GPLLPPRLLYSRLCTFVSHYSSHLKRHMQTHSGEKPFRCGRCPYASAQLVNLTRHTRHTGKPYRCPH
 CPFACSSLGNLRRHQRTHAGPPTPPCPTCFRCCTPRPARPPSPTEQEGAVPRRPEDALLLPDL SLHVPP
 GGASFLPDCGQLRGEGLCGTGEPLPELLFPWTCRGGQEELEEGESRLGAAMCGRMRGEAGGGASG
 GPQGPSDKGFACSLCPFATHYPNHLARHMKTHSGEKPFRCARCPYASAHLNLRKHQRVHTGKPYKCP
 CPYACGNLANLRHGRHSGDKPFRCSLCNYSQSMNLKRHMLRHTGKPFRCATCAYTTGHWDNYKRH
 QKVHGGGAGGPGLSASEGWAPPHSPSVLSSRPPALGTAGSRAVHTDSS

TRTRPLEQKLI SEEDLAANDILDYKDDDDKV

Chromatograms:

https://cdn.origene.com/chromatograms/mk8113_h03.zip

Restriction Sites:

Sgfl-Mlul

Cloning Scheme:

ACCN: NM_144631

ORF Size: 1623 bp

OTI Disclaimer: The molecular sequence of this clone aligns with the gene accession number as a point of reference only. However, individual transcript sequences of the same gene can differ through naturally occurring variations (e.g. polymorphisms), each with its own valid existence. This clone is substantially in agreement with the reference, but a complete review of all prevailing variants is recommended prior to use. [More info](#)

OTI Annotation: This clone was engineered to express the complete ORF with an expression tag. Expression varies depending on the nature of the gene.

Components: The ORF clone is ion-exchange column purified and shipped in a 2D barcoded Matrix tube containing 10ug of transfection-ready, dried plasmid DNA (reconstitute with 100 ul of water).

- Reconstitution Method:**
1. Centrifuge at 5,000xg for 5min.
 2. Carefully open the tube and add 100ul of sterile water to dissolve the DNA.
 3. Close the tube and incubate for 10 minutes at room temperature.
 4. Briefly vortex the tube and then do a quick spin (less than 5000xg) to concentrate the liquid at the bottom.
 5. Store the suspended plasmid at -20°C. The DNA is stable for at least one year from date of shipping when stored at -20°C.

RefSeq: [NM_144631.6](#)
RefSeq Size: 2168 bp

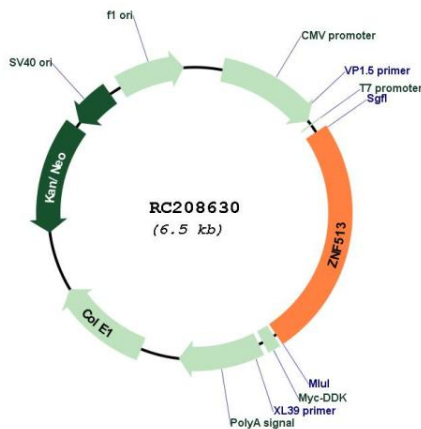
RefSeq ORF: 1626 bp

Locus ID: 130557

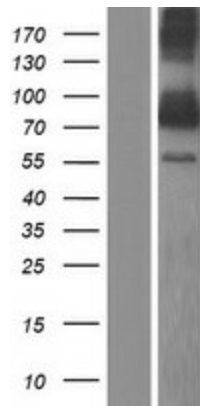
UniProt ID: [Q8N8E2](#)

Cytogenetics: 2p23.3
Domains: zf-C2H2
Protein Families: Transcription Factors
MW: 57.9 kDa
Gene Summary: The protein encoded by this gene is a possible transcriptional regulator involved in retinal development. Defects in this gene can be a cause of autosomal-recessive retinitis pigmentosa. Two transcript variants encoding different isoforms have been found for this gene. [provided by RefSeq, Mar 2011]

Product images:



Circular map for RC208630



Western blot validation of overexpression lysate (Cat# [LY408261]) using anti-DDK antibody (Cat# [TA50011-100]). Left: Cell lysates from untransfected HEK293T cells; Right: Cell lysates from HEK293T cells transfected with RC208630 using transfection reagent MegaTran 2.0 (Cat# [TT210002]).