

Product datasheet for RC208623

LRATD1 (NM_145175) Human Tagged ORF Clone

Product data:

Product Type:	Expression Plasmids
Product Name:	LRATD1 (NM_145175) Human Tagged ORF Clone
Tag:	Myc-DDK
Symbol:	LRATD1
Synonyms:	FAM84A; NSE1; PP11517
Mammalian Cell Selection:	Neomycin
Vector:	pCMV6-Entry (PS100001)
E. coli Selection:	Kanamycin (25 ug/mL)
ORF Nucleotide Sequence:	>RC208623 ORF sequence Red=Cloning site Blue=ORF Green=Tags(s)

TTTTGTAATACGACTCACTATAGGGCGGCCGGAATTCGTCGACTGGATCCGGTACCGAGGAGATCTGCC
GCC**CGATCGCC**

ATGGGCAACCAACTGGACCGCATCACCCACCTCAACTACAGCGAGTTGCCACAGGGGACCCGTCGGGGA
TTGAAAAGGACGAACTGCGGGTCGGGGTTGCCTACTTCTTCTCGGATGATGAGGAAGACCTGGACGAACG
CGGGCAGCCCGACAAGTTTGGCGTGAAGCCCCCGGGTTGCACCCCTGCCCGGAGAGCCCCAGCCGC
CACCACCACCTGCTGCACCAGCTGGTCTCAACGAGACTCAGTTTTCCGCCTTCGGGGCCAGGAAT
GCATCTTTTCAAAGTGAGCGGTGGCCCTCAGGGCGCCGACCTAAGCGTCTACGCGGTACCGCGTGC
AGCGCTCTGCGAACC CGCGACCTGCTGGAGCTGCTGTGGCTGCAGCCCGCGCGGAGCCGCCCGCC
GCCCGCACTGGGCCGTCTACGTGGGCGGCGGGCAGATCATCCACCTGCACCAAGGCGAGATCCGCCAGG
ACAGCCTGTATGAGGCGGGCGCGCCAACGTGGGCGGGTGGTGAATAGCTGGTACCGCTACCGCCCGCT
GGTGGCCGAGCTGGTGGTGCAGAACGCCTGCGGCCACCTGGGCCTCAAGAGCGAGGAGATCTGCTGGACG
AACTCGGAGAGCTTCGCCGCTGGTGGCCTTTGGCAAGCGGGAGTTCAAGGCGGGAGGGGAGGTGCCGG
CAGGCACGCAGCCCCGAGCAGCAGTACTATCTCAAGGTGCACCTGGGAGAGAACAAGGTCCACACCGC
CAGGTTTACAGCCTGGAAGACCTATCCGCGAGAAGCGCCGTATCGACGCCAGCGGCCGCTGCGAGTG
CTCCAGGAGCTCGCCGACCTCGTGGACGACAAGGAG

ACGCGTACGCGGGCCGCTCGAGCAGAAACTCATCTCAGAAGAGGATCTGGCAGCAAATGATATCTGGATT
ACAAGGATGACGACGATAAGGTTTAA



[View online »](#)

Protein Sequence: >RC208623 protein sequence
Red=Cloning site Green=Tags(s)

MGNQLDRITHLNYSELPTGDPGSGIEKDELRVGVAYFFSDDEEDLDERGQDPDKFGVKAPPGCTPCPESPSR
 HHHHLLHQLVLNETQFSAFRGQECIFSKVSGGPQGADLSVYAVTALPALCEPGDLELLWLQPAPEPPAP
 APHWAVYVGGGQI IHLHQGEIRQDSL YEAGAANVGRVNSWYRYRPLVAELVVQNACGHLGLKSEEICWT
 NSESFAAWCRFGKREFKAGGEVPAGTQPPQQYYLKVHLGENKVHTARFHSLEDLIREKRRIDASGRLRV
 LQELADLVDDKE

TRTRPLEQKLISEEDLAANDILDYKDDDDKV

Chromatograms: https://cdn.origene.com/chromatograms/mk6552_h06.zip

Restriction Sites: SgfI-MluI

Cloning Scheme:



ACCN: NM_145175

ORF Size: 876 bp

OTI Disclaimer: The molecular sequence of this clone aligns with the gene accession number as a point of reference only. However, individual transcript sequences of the same gene can differ through naturally occurring variations (e.g. polymorphisms), each with its own valid existence. This clone is substantially in agreement with the reference, but a complete review of all prevailing variants is recommended prior to use. [More info](#)

OTI Annotation: This clone was engineered to express the complete ORF with an expression tag. Expression varies depending on the nature of the gene.

Components: The ORF clone is ion-exchange column purified and shipped in a 2D barcoded Matrix tube containing 10ug of transfection-ready, dried plasmid DNA (reconstitute with 100 ul of water).

Reconstitution Method:

1. Centrifuge at 5,000xg for 5min.
2. Carefully open the tube and add 100ul of sterile water to dissolve the DNA.
3. Close the tube and incubate for 10 minutes at room temperature.
4. Briefly vortex the tube and then do a quick spin (less than 5000xg) to concentrate the liquid at the bottom.
5. Store the suspended plasmid at -20°C. The DNA is stable for at least one year from date of shipping when stored at -20°C.

RefSeq: [NM_145175.4](#)

RefSeq Size: 6366 bp

RefSeq ORF: 879 bp

Locus ID: 151354

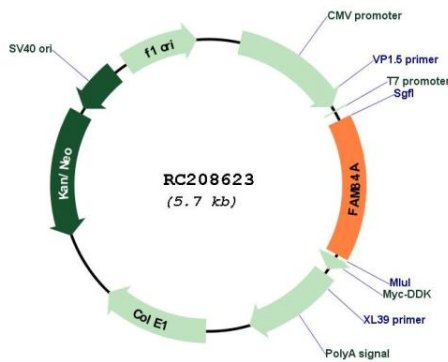
UniProt ID: [Q96KN4](#)

Cytogenetics: 2p24.3

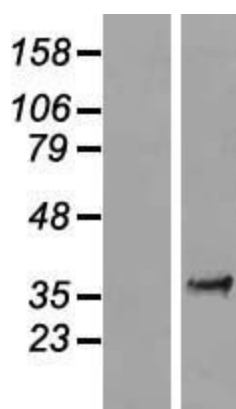
MW: 32.5 kDa

Gene Summary: May play a role in cell morphology and motility.[UniProtKB/Swiss-Prot Function]

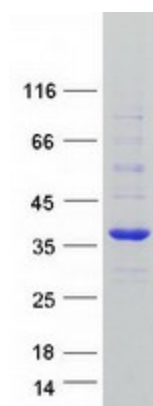
Product images:



Circular map for RC208623



Western blot validation of overexpression lysate (Cat# [LY408037]) using anti-DDK antibody (Cat# [TA50011-100]). Left: Cell lysates from untransfected HEK293T cells; Right: Cell lysates from HEK293T cells transfected with RC208623 using transfection reagent MegaTran 2.0 (Cat# [TT210002]).



Coomassie blue staining of purified LRATD1 protein (Cat# [TP308623]). The protein was produced from HEK293T cells transfected with LRATD1 cDNA clone (Cat# RC208623) using MegaTran 2.0 (Cat# [TT210002]).