

Product datasheet for RC208620

CITED4 (NM_133467) Human Tagged ORF Clone

Product data:

Product Type: Expression Plasmids
Product Name: CITED4 (NM_133467) Human Tagged ORF Clone
Tag: Myc-DDK
Symbol: CITED4
Mammalian Cell Selection: Neomycin
Vector: pCMV6-Entry (PS100001)
E. coli Selection: Kanamycin (25 ug/mL)
ORF Nucleotide Sequence: >RC208620 representing NM_133467
 Red=Cloning site Blue=ORF Green=Tags(s)

TTTTGTAATACGACTCACTATAGGGCGGCCGGAATTCGTCGACTGGATCCGGTACCGAGGAGATCTGCC
 GCC**CGATCGCC**

ATGGCCGACCACCTGATGCTCGCCGAGGGCTACCGCTGGTGCAGAGGCCCGCTCCGCCGCGGCCGCC
 ATGGCCCTCATGCGCTCCGGACTCTGCCCGCTACGCGGGCCCGGCCTGGACAGTGGCTGAGGCCGCG
 GGGGGCTCCGCTGGGGCCGCCGCCGCCGCCCAACCCGGGGCCCTGGCGTACGGGGCTTCGGGCCGCC
 TCCTCCTCCAGCCCTTCCGGCCGTGCCTCCGCCGGCCGGGCATCGCGCACCTGCAGCCTGTGGCGA
 CGCCGTACCCCGCCGCGCGGCCGCCGCCCAACGCTCCGGGAGGCCCCCGGGCCCGCAGCCGCCGCC
 AAGCGCCGACGCCCGCCGCCGCCGCCGCCGACGCCCTGGGCGGCATGGACGCCGAACCTCATCGACGAGGAG
 GCGCTGACGTGCTGGAGCTGGAGCTCGGGCTGCACCGCTGCGCGAGCTGCCCGAGCTTCTCTGGGCC
 AGAGCGAGTTCGACTGCTTCTCGGACTTGGGGTCCGCGCCGCCGCCGGCTCCGTGAGCTGC

ACGCGTACGCGGCCGCTCGAGCAGAACTCATCTCAGAAGAGGATCTGGCAGCAAATGATATCTGGATT
 ACAAGGATGACGACGATAAGGTTTAA

Protein Sequence: >RC208620 representing NM_133467
 Red=Cloning site Green=Tags(s)
 MADHMLAEGYRLVQRPPSAAAAHGPHALRTLPPYAGPGLDSGLRPRGAPLGP PPPRQPGALAYGAFGPP
 SSFQPPAVPPPAAGIAHLQPVATPYPGRAAPPNAPGGPPGPQPAPSAAAPPPPAHALGGMDAELIDEE
 ALTSLELELGLHRVRELPELFLGQSEFDCFSDLGSAPPAGSVSC

TRTRPLEQKLISEEDLAANDILDYKDDDDKV

Chromatograms: https://cdn.origene.com/chromatograms/mk8113_h02.zip
Restriction Sites: Sgfl-MluI



[View online »](#)

Cloning Scheme:


ACCN: NM_133467

ORF Size: 552 bp

OTI Disclaimer: Due to the inherent nature of this plasmid, standard methods to replicate additional amounts of DNA in E. coli are highly likely to result in mutations and/or rearrangements. Therefore, OriGene does not guarantee the capability to replicate this plasmid DNA. Additional amounts of DNA can be purchased from OriGene with batch-specific, full-sequence verification at a reduced cost. Please contact our customer care team at custsupport@origene.com or by calling 301.340.3188 option 3 for pricing and delivery.

The molecular sequence of this clone aligns with the gene accession number as a point of reference only. However, individual transcript sequences of the same gene can differ through naturally occurring variations (e.g. polymorphisms), each with its own valid existence. This clone is substantially in agreement with the reference, but a complete review of all prevailing variants is recommended prior to use. [More info](#)

OTI Annotation: This clone was engineered to express the complete ORF with an expression tag. Expression varies depending on the nature of the gene.

Components: The ORF clone is ion-exchange column purified and shipped in a 2D barcoded Matrix tube containing 10ug of transfection-ready, dried plasmid DNA (reconstitute with 100 ul of water).

- Reconstitution Method:**
1. Centrifuge at 5,000xg for 5min.
 2. Carefully open the tube and add 100ul of sterile water to dissolve the DNA.
 3. Close the tube and incubate for 10 minutes at room temperature.
 4. Briefly vortex the tube and then do a quick spin (less than 5000xg) to concentrate the liquid at the bottom.
 5. Store the suspended plasmid at -20°C. The DNA is stable for at least one year from date of shipping when stored at -20°C.

RefSeq: [NM_133467.3](#)

RefSeq Size: 1312 bp

RefSeq ORF: 555 bp

Locus ID: 163732

UniProt ID: [Q96RK1](#)

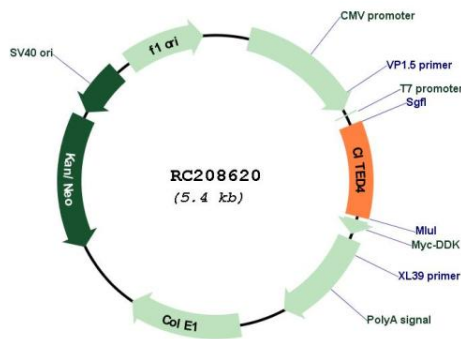
Cytogenetics: 1p35-p34

Protein Families: Transcription Factors

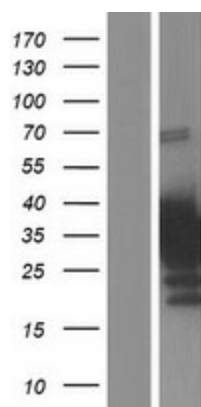
MW: 18.4 kDa

Gene Summary: The protein encoded by this intronless gene belongs to the CITED family of transcriptional coactivators that bind to several proteins, including CREB-binding protein (CBP) and p300, via a conserved 32 aa C-terminal motif, and regulate gene transcription. This protein also interacts with transcription factor AP2 (TFAP2), and thus may function as a co-activator for TFAP2. Hypermethylation and transcriptional downregulation of this gene has been observed in oligodendroglial tumors with deletions of chromosomal arms 1p and 19q, and associated with longer recurrence-free and overall survival of patients with oligodendroglial tumors. [provided by RefSeq, Aug 2011]

Product images:



Circular map for RC208620



Western blot validation of overexpression lysate (Cat# [LY408804]) using anti-DDK antibody (Cat# [TA50011-100]). Left: Cell lysates from untransfected HEK293T cells; Right: Cell lysates from HEK293T cells transfected with RC208620 using transfection reagent MegaTran 2.0 (Cat# [TT210002]).