

## Product datasheet for RC208617

### TRAPPC2 (NM\_001011658) Human Tagged ORF Clone

#### Product data:

**Product Type:** Expression Plasmids  
**Product Name:** TRAPPC2 (NM\_001011658) Human Tagged ORF Clone  
**Tag:** Myc-DDK  
**Symbol:** TRAPPC2  
**Synonyms:** hYP38334; MIP2A; SEDL; SEDT; TRAPPC2P1; TRS20; ZNF547L  
**Mammalian Cell Selection:** Neomycin  
**Vector:** pCMV6-Entry (PS100001)  
**E. coli Selection:** Kanamycin (25 ug/mL)  
**ORF Nucleotide Sequence:** >RC208617 ORF sequence  
 Red=Cloning site Blue=ORF Green=Tags(s)

TTTTGTAAACGACTCACTATAGGGCGGCCGGAATTCGTCGACTGGATCCGGTACCGAGGAGATCTGCC  
 GCCCGCATCGCC

ATGTCTGGGAGCTTCTACTTTGTAATTGTTGGCCACCATGATAATCCAGTTTTTGAAATGGAGTTTTTGC  
 CAGCTGGGAAGGCAGAATCCAAAGACGACCATCGTCATCTGAACCATTCATAGCTCATGCTGCTCTCGA  
 CCTCGTAGATGAGAACATGTGGCTATCGAACAACATGTACTTGAAACTGTGGACAAGTTCAACGAGTGG  
 TTTGTGTCGGCATTGTCACTGCGGGGCATATGAGGTTTATTATGCTTCATGACATAAGACAAGAAGATG  
 GAATAAAGAACTTCTTTACTGATGTTTATGATTTATATATAAAGTTTTCAATGAATCCATTTTATGAACC  
 CAATTCTCCTATTCGATCAAGTGCATTTGACAGAAAAGTTCAGTTTCTTGGAAGAAACACCTTTTAAGC

ACGCGTACGCGGCCGCTCGAGCAGAACTCATCTCAGAAGAGGATCTGGCAGCAAATGATATCCTGGATT  
 ACAAGGATGACGACGATAAGGTTTAA

**Protein Sequence:** >RC208617 protein sequence  
 Red=Cloning site Green=Tags(s)

MSGSFYFVIVGHHDNPVFEMEFLPAGKAESKDDHRHLNQFIAHAALDLVDENMWLSNNMYLKTVDFKNEW  
 FVSFAFVTAGHMRIFIMLHDIRQEDGIKNFFTDVYDLYIKFSMPNPFYEPNSPIRSSAFDRKVQLGKKHLLS

TRTRPLEQKLISEEDLAANDILDYKDDDDKV

**Chromatograms:** [https://cdn.origene.com/chromatograms/mk6553\\_f06.zip](https://cdn.origene.com/chromatograms/mk6553_f06.zip)

**Restriction Sites:** SgfI-MluI


[View online »](#)

**Cloning Scheme:**


**ACCN:** NM\_001011658

**ORF Size:** 420 bp

**OTI Disclaimer:** The molecular sequence of this clone aligns with the gene accession number as a point of reference only. However, individual transcript sequences of the same gene can differ through naturally occurring variations (e.g. polymorphisms), each with its own valid existence. This clone is substantially in agreement with the reference, but a complete review of all prevailing variants is recommended prior to use. [More info](#)

**OTI Annotation:** This clone was engineered to express the complete ORF with an expression tag. Expression varies depending on the nature of the gene.

**Components:** The ORF clone is ion-exchange column purified and shipped in a 2D barcoded Matrix tube containing 10ug of transfection-ready, dried plasmid DNA (reconstitute with 100 ul of water).

**Reconstitution Method:**

1. Centrifuge at 5,000xg for 5min.
2. Carefully open the tube and add 100ul of sterile water to dissolve the DNA.
3. Close the tube and incubate for 10 minutes at room temperature.
4. Briefly vortex the tube and then do a quick spin (less than 5000xg) to concentrate the liquid at the bottom.
5. Store the suspended plasmid at -20°C. The DNA is stable for at least one year from date of shipping when stored at -20°C.

**Note:** Plasmids are not sterile. For experiments where strict sterility is required, filtration with 0.22um filter is required.

**RefSeq:** [NM\\_001011658.4](#)

**RefSeq Size:** 2869 bp

**RefSeq ORF:** 423 bp

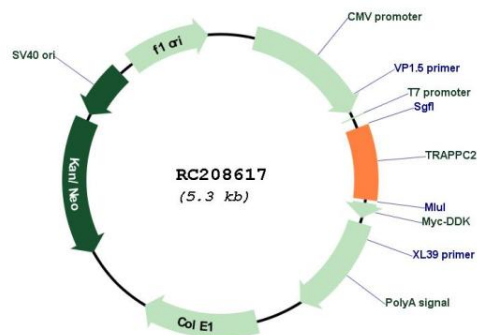
Locus ID: 6399  
 UniProt ID: [P0DI81](#)  
 Cytogenetics: Xp22.2

Protein Families: Druggable Genome, Transcription Factors

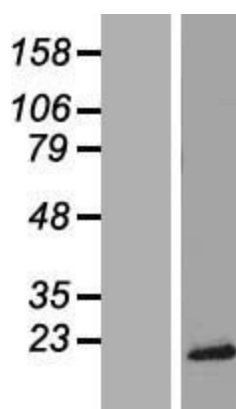
MW: 16.4 kDa

**Gene Summary:** The protein encoded by this gene is thought to be part of a large multi-subunit complex involved in the targeting and fusion of endoplasmic reticulum-to-Golgi transport vesicles with their acceptor compartment. In addition, the encoded protein can bind c-myc promoter-binding protein 1 and block its transcriptional repression capability. Mutations in this gene are a cause of spondyloepiphyseal dysplasia tarda (SED). A processed pseudogene of this gene is located on chromosome 19, and other pseudogenes are found on chromosomes 8 and Y. Alternatively spliced transcript variants have been found for this gene. [provided by RefSeq, Mar 2010]

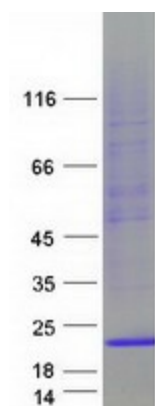
## Product images:



Circular map for RC208617



Western blot validation of overexpression lysate (Cat# [LY415200]) using anti-DDK antibody (Cat# [TA50011-100]). Left: Cell lysates from untransfected HEK293T cells; Right: Cell lysates from HEK293T cells transfected with [RC224275] using transfection reagent MegaTran 2.0 (Cat# [TT210002]).



Coomassie blue staining of purified TRAPPC2 protein (Cat# [TP308617]). The protein was produced from HEK293T cells transfected with TRAPPC2 cDNA clone (Cat# RC208617) using MegaTran 2.0 (Cat# [TT210002]).