

Product datasheet for RC208605

CCR1 (NM_001295) Human Tagged ORF Clone

Product data:

Product Type:	Expression Plasmids
Product Name:	CCR1 (NM_001295) Human Tagged ORF Clone
Tag:	Myc-DDK
Symbol:	CCR1
Synonyms:	CD191; CKR-1; CKR1; CMKBR1; HM145; MIP1aR; SCYAR1
Mammalian Cell Selection:	Neomycin
Vector:	pCMV6-Entry (PS100001)
E. coli Selection:	Kanamycin (25 ug/mL)
ORF Nucleotide Sequence:	>RC208605 ORF sequence Red=Cloning site Blue=ORF Green=Tags(s)

TTTTGTAATACGACTCACTATAGGGCGGCCGGAATTCGTCGACTGGATCCGGTACCGAGGAGATCTGCC
GCC**CGATCGCC**

ATGGAACTCCAAACACCACAGAGGACTATGACACGACCACAGAGTTTGACTATGGGGATGCAACTCCGT
GCCAGAAGGTGAACGAGAGGGCCTTTGGGGCCCAACTGCTGCCCCCTCTGTACTCCTTGGTATTTGTCAT
TGGCCTGGTTGAAACATCCTGGTGGTCTGGTCTTGTGCAATACAAGAGGCTAAAAACATGACCAGC
ATCTACCTCCTGAACCTGGCCATTTCTGACCTGCTTCTCTGTTACGCTTCCCTTCTGGATCGACTACA
AGTTGAAGGATGACTGGGTTTTTGGTGATGCCATGTGTAAGATCCTCTCTGGGTTTTATTACACAGGCTT
GTACAGCGAGATCTTTTTCATCATCCTGCTGACGATTGACAGGTACCTGGCCATCGTCCACGCCGTGTTT
GCCTTGGCGGCACGGACCGTCACTTTTGGTGTCATCACCAGCATCATATTTGGGCCCTGGCCATCTTGG
CTTCCATGCCAGGCTTATACTTTTCCAAGACCAATGGGAATTCCTCACCACACCTGCAGCCTTCACTT
TCCTCACGAAAGCCTACGAGAGTGAAGCTGTTTCAGGCTCTGAAACTGAACCTCTTTGGGCTGGTATTG
CCTTTGTTGGTCATGATCATCTGCTACACAGGGATTATAAAGATTCTGCTAAGACGACCAATGAGAAGA
AATCCAAAGCTGTCCGTTTGATTTTGTGTCATGATCATCTTTTTCTCTTTGGACCCCTACAATTT
GACTATACTTATTTCTGTTTTCCAAGACTTCTGTTCACCCATGAGTGTGAGCAGAGCAGACATTTGGAC
CTGGCTGTGCAAGTGACGGAGGTGATCGCTACACGCACTGCTGTGCAACCCAGTGATCTACGCCCTCG
TTGGTGAGAGGTTCCGGAAGTACCTGCGCAGTTGTTCCACAGGCGTGTGGCTGTGCACCTGGTTAAATG
GCTCCCTTCTCTCCGTGGACAGGCTGGAGAGGGTCAGCTCCACATCTCCCTCCACAGGGGAGCATGAA
CTCTCTGCTGGGTTT

ACGCGTACGCGGCCGCTCGAGCAGAACTCATCTCAGAAGAGGATCTGGCAGCAATGATATCCTGGATT
ACAAGGATGACGACGATAAGGTTTAA



[View online »](#)

Protein Sequence: >RC208605 protein sequence
Red=Cloning site Green=Tags(s)

METPNNTTEDYDTTTEFDYGDATPCQKVNERAFGAQLLPPLYSLVFVIGLVGNILVVLVLVQYKRLKNMTS
 IYLLNLAI SDLLFLFTLPFWIDYKLDKDDWVFGDAMCKILSGFYTGLYSEIFFIILLTIDRYLAIHVAVF
 ALRARTVTFGVITSIIWALAILASMPGLYFSKTQWEFTHHTCSLHFPHESLREWKLQALKLNLFGGLVL
 PLLVMIICYGTGIKILLRRPNEKSKAVRLIFVIMIIFFLFWTPYNLTILISVFQDFLFTHCEQSRHLD
 LAVQVTEVIAYTHCCVNPVIYAFVGERFRKYLRQLFHRRYAVHLVKWLPFLSVDRLERVSSTSPSTGEHE
 LSAGF

TRTRPLEQKLISEEDLAANDILDYKDDDDKV

Chromatograms: https://cdn.origene.com/chromatograms/mk6125_b06.zip

Restriction Sites: SgfI-MluI

Cloning Scheme:



ACCN: NM_001295

ORF Size: 1065 bp

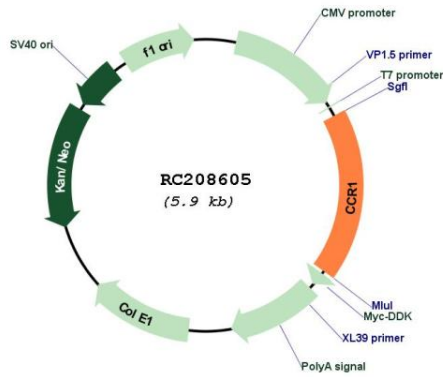
OTI Disclaimer: The molecular sequence of this clone aligns with the gene accession number as a point of reference only. However, individual transcript sequences of the same gene can differ through naturally occurring variations (e.g. polymorphisms), each with its own valid existence. This clone is substantially in agreement with the reference, but a complete review of all prevailing variants is recommended prior to use. [More info](#)

OTI Annotation: This clone was engineered to express the complete ORF with an expression tag. Expression varies depending on the nature of the gene.

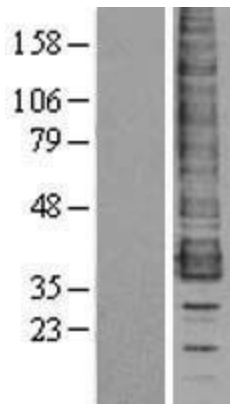
Components: The ORF clone is ion-exchange column purified and shipped in a 2D barcoded Matrix tube containing 10ug of transfection-ready, dried plasmid DNA (reconstitute with 100 ul of water).

Reconstitution Method:	<ol style="list-style-type: none">1. Centrifuge at 5,000xg for 5min.2. Carefully open the tube and add 100ul of sterile water to dissolve the DNA.3. Close the tube and incubate for 10 minutes at room temperature.4. Briefly vortex the tube and then do a quick spin (less than 5000xg) to concentrate the liquid at the bottom.5. Store the suspended plasmid at -20°C. The DNA is stable for at least one year from date of shipping when stored at -20°C.
Note:	Plasmids are not sterile. For experiments where strict sterility is required, filtration with 0.22um filter is required.
RefSeq:	NM_001295.3
RefSeq Size:	2690 bp
RefSeq ORF:	1068 bp
Locus ID:	1230
UniProt ID:	P32246
Cytogenetics:	3p21.31
Domains:	7tm_1
Protein Families:	Druggable Genome, GPCR, Transmembrane
Protein Pathways:	Chemokine signaling pathway, Cytokine-cytokine receptor interaction
MW:	41.2 kDa
Gene Summary:	This gene encodes a member of the beta chemokine receptor family, which is predicted to be a seven transmembrane protein similar to G protein-coupled receptors. The ligands of this receptor include macrophage inflammatory protein 1 alpha (MIP-1 alpha), regulated on activation normal T expressed and secreted protein (RANTES), monocyte chemoattractant protein 3 (MCP-3), and myeloid progenitor inhibitory factor-1 (MPIF-1). Chemokines and their receptors mediated signal transduction are critical for the recruitment of effector immune cells to the site of inflammation. Knockout studies of the mouse homolog suggested the roles of this gene in host protection from inflammatory response, and susceptibility to virus and parasite. This gene and other chemokine receptor genes, including CCR2, CCRL2, CCR3, CCR5 and CCXCR1, are found to form a gene cluster on chromosome 3p. [provided by RefSeq, Jul 2008]

Product images:



Circular map for RC208605



Western blot validation of overexpression lysate (Cat# [LY400517]) using anti-DDK antibody (Cat# [TA50011-100]). Left: Cell lysates from untransfected HEK293T cells; Right: Cell lysates from HEK293T cells transfected with RC208605 using transfection reagent MegaTran 2.0 (Cat# [TT210002]).