

## Product datasheet for **RC208602**

### GPC1 (NM\_002081) Human Tagged ORF Clone

#### Product data:

|                           |   |
|---------------------------|---|
| Product Type:             | Expression Plasmids                     |
| Product Name:             | GPC1 (NM_002081) Human Tagged ORF Clone |
| Tag:                      | Myc-DDK                                 |
| Symbol:                   | GPC1                                    |
| Synonyms:                 | glypican                                |
| Mammalian Cell Selection: | Neomycin                                |
| Vector:                   | pCMV6-Entry (PS100001)                  |
| E. coli Selection:        | Kanamycin (25 ug/mL)                    |



[View online »](#)

**ORF Nucleotide Sequence:**

>RC208602 ORF sequence  
 Red=Cloning site Blue=ORF Green=Tags(s)

TTTTGTAATACGACTCACTATAGGGCGGCCGGAATTCGTCGACTGGATCCGGTACCGAGGAGATCTGCC  
 GCC**CGATCGCC**

ATGGAGCTCCGGGCCGAGGCTGGTGGCTGCTATGTGCGGCCGACGCGCTGGTCGCCTGCGCCCGGGG  
 ACCCGGCCAGCAAGAGCCGGAGCTGCGGCGAGGTCGCCAGATCTACGGAGCCAAGGCTTCAGCCTGAG  
 CGACGTGCCCCAGGCGGAGATCTCGGGTGAACCTGCGGATCTGTCCCCAGGGTACACCTGCTGCACC  
 AGCGAGATGGAGGAGAACCCTGGCCAACCGAGCCATGCCGAGCTGGAGACCGCGCTCCGGGACAGCAGCC  
 GCGTCTCGAGGCCATGCTTGCCACCCAGCTGCGCAGCTTCGATGACCACTTCCAGCACCTGCTGAACGA  
 CTCGGAGCGGACGCTGCAGGCCACCTTCCCGGCCCTTCGGAGAGCTGTACACGCAGAACGCGAGGGCC  
 TTCGGGACCTGTACTCAGAGCTGCGCCTGTACTACCGCGGTGCCAACCTGCACCTGGAGGAGACGCTGG  
 CCGAGTCTGGGCCCGCTGCTCGAGCGCTCTTCAAGCAGCTGCACCCAGCTGCTGCTGCCTGATGA  
 CTACCTGGACTGCCTGGCAAGCAGGCCGAGGCGCTGCGGCCCTTCGGGGAGGCCCGAGAGAGCTGCGC  
 CTGCGGGCCACCCGTGCCTTCGTGGCTGCTCGCTCCTTTGTGCAGGGCCTGGGCGTGGCCAGCGAGCTGG  
 TCCGAAAGTGGCTCAGGTCCCCCTGGGCCCGAGTGTCTCGAGAGCTGTCATGAAGCTGGTCTACTGTGC  
 TCACTGCCTGGGAGTCCCGGCGCCAGGCCCTGCCCTGACTATTGCCAAATGTGCTCAAGGGTGCCTT  
 GCCAACAGGCCGACCTGGACGCCGAGTGGAGAACCTCCTGGACTCCATGGTGTCTATCACCGACAAGT  
 TCTGGGTACATCGGGTGTGGAGAGTGTATCGGCAGCGTGCACACGTGGCTGGCGGAGGCCATCAACGC  
 CCTCCAGGACAACAGGGACACGCTCACGGCAAGGTATCCAGGGCTGCGGGAACCCCAAGTCAACCC  
 CAGGGCCCTGGCCTGAGGAGAAGCGGCCCGGGCAAGCTGGCCCGGGGAGAGGCCACCTTCAGGCA  
 CGCTGGAGAAGCTGGTCTCTGAAGCCAAGGCCAGCTCCGCGAGTCCAGGACTTCTGGATCAGCCTCCC  
 AGGGACACTGTGCAGTGAGAAGATGGCCCTGAGCACTGCCAGTGTGACCGCTGCTGGAACGGGATGGCC  
 AGAGGCCGGTACCTCCCCGAGGTATGGGTGACGGCCTGGCCAACCAGATCAACAACCCCGAGGTGGAGG  
 TGGACATACCAAGCCGGACATGACCATCCGGCAGCAGATCATGCAGCTGAAGATCATGACCAACCGGCT  
 GCGCAGCGCTACAACGGCAACGACGTGGACTTCCAGGACGCCAGTACGACGGCAGCGGCTCGGGCAGC  
 GGTGATGGCTGTCTGGATGACCTCTGCGGCCGGAAGGTACAGCAGGAAGAGCTCCAGCTCCCGGACGCCCT  
 TGACCCATGCCCTCCAGGCCTGTCAGAGCAGGAAGGACAGAAGACCTCGGCTGCCAGCTGCCCCAGCC  
 CCCGACCTTCTCTGCCCTCCTCTTCTCTGGCCCTTACAGTAGCCAGGCCCGCGGTGGCGG

**ACGCGT**ACGCGGCCGCTCGAGCAGAAACTCATCTCAGAAGAGGATCTGGCAGCAAATGATATCCTGGATT  
 ACAAGGATGACGACGATAAGGTTTAA

**Protein Sequence:**

>RC208602 protein sequence  
 Red=Cloning site Green=Tags(s)

MELRARGWLLCAAALVACARGDPASKSRSCGEVRQIYGAKGFSLSVDPQAEISGEHLRIPCQGYTCTCT  
 SEMEENLANRSHAELETALRDSSRVLQAMLATQLRSFDDHFQHLNDSERTLQATFPGAFGELYTQNARA  
 FRDLYSELRLYYRGANLHLEETLAEFWARLLERLFKQLHPQLLLPDDYLDCLGKQAEALRPFGEAPREL  
 LRATRAFVAARSFVQGLGVASDVVRKVAQVPLGPECSRAVMKLVYCAHCLGVPGARPCPDYCRNLVKGCL  
 ANQADLDAEWRNLLDSMVLITDKFWGTSVGSVHTWLAEAINALQDNRTLAKVIQGCNPKVNP  
 QGPGPEEKRRRGLAPRERPPSGTLEKLVSEAKAQLRDVQDFWISLPGTLCSEKMALSTASDDRCWNGMA  
 RGRYLPEVMGDGLANQINNPEVEVDITKPDMTIRQQIMQLKIMTNRLRSAYNGNDVDFQDASDDGSGSGS  
 GDGCLDDLGRKVSRSKSSSRTPLTHALPGLSEQEQKTSAAASCPQPPTFLLPLLLFLALTVARPRWR

**TR**TRPLEQKLISEEDLAANDILDYKDDDDKV

**Chromatograms:**

[https://cdn.origene.com/chromatograms/mk6246\\_e11.zip](https://cdn.origene.com/chromatograms/mk6246_e11.zip)

**Restriction Sites:**

Sgfl-MluI

Cloning Scheme:



ACCN: NM\_002081

ORF Size: 1674 bp

OTI Disclaimer: The molecular sequence of this clone aligns with the gene accession number as a point of reference only. However, individual transcript sequences of the same gene can differ through naturally occurring variations (e.g. polymorphisms), each with its own valid existence. This clone is substantially in agreement with the reference, but a complete review of all prevailing variants is recommended prior to use. [More info](#)

OTI Annotation: This clone was engineered to express the complete ORF with an expression tag. Expression varies depending on the nature of the gene.

Components: The ORF clone is ion-exchange column purified and shipped in a 2D barcoded Matrix tube containing 10ug of transfection-ready, dried plasmid DNA (reconstitute with 100 ul of water).

Reconstitution Method:

1. Centrifuge at 5,000xg for 5min.
2. Carefully open the tube and add 100ul of sterile water to dissolve the DNA.
3. Close the tube and incubate for 10 minutes at room temperature.
4. Briefly vortex the tube and then do a quick spin (less than 5000xg) to concentrate the liquid at the bottom.
5. Store the suspended plasmid at -20°C. The DNA is stable for at least one year from date of shipping when stored at -20°C.

RefSeq: [NM\\_002081.1](#), [NP\\_002072.1](#)

RefSeq Size: 3686 bp

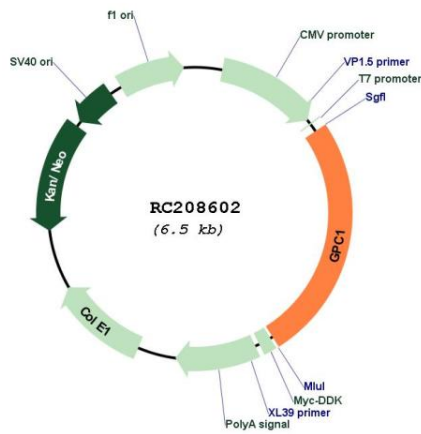
RefSeq ORF: 1677 bp

Locus ID: 2817

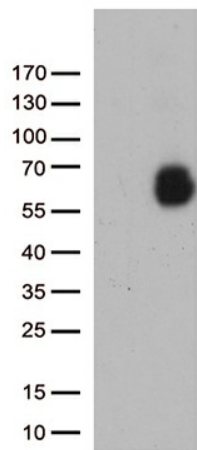
UniProt ID: [P35052](#)

**Cytogenetics:** 2q37.3  
**Domains:** Glypican  
**Protein Families:** Druggable Genome  
**MW:** 61.7 kDa  
**Gene Summary:** Cell surface heparan sulfate proteoglycans are composed of a membrane-associated protein core substituted with a variable number of heparan sulfate chains. Members of the glypican-related integral membrane proteoglycan family (GRIPS) contain a core protein anchored to the cytoplasmic membrane via a glycosyl phosphatidylinositol linkage. These proteins may play a role in the control of cell division and growth regulation. [provided by RefSeq, Jul 2008]

**Product images:**



Circular map for RC208602



HEK293T cells were transfected with the pCMV6-ENTRY control (Cat# [PS100001], Left lane) or pCMV6-ENTRY GPC1 (Cat# RC208602, Right lane) cDNA for 48 hrs and lysed. Equivalent amounts of cell lysates (5 ug per lane) were separated by SDS-PAGE and immunoblotted with anti-GPC1 (Cat# [TA812439])(1:500).