

Product datasheet for **RC208595**

TRP1 (TYRP1) (NM_000550) Human Tagged ORF Clone

Product data:

Product Type:	Expression Plasmids
Product Name:	TRP1 (TYRP1) (NM_000550) Human Tagged ORF Clone
Tag:	Myc-DDK
Symbol:	TRP1
Synonyms:	b-PROTEIN; CAS2; CATB; GP75; OCA3; TRP; TRP1; TYRP
Mammalian Cell Selection:	Neomycin
Vector:	pCMV6-Entry (PS100001)
E. coli Selection:	Kanamycin (25 ug/mL)



[View online »](#)

ORF Nucleotide Sequence:

>RC208595 ORF sequence
 Red=Cloning site Blue=ORF Green=Tags(s)

TTTTGTAATACGACTCACTATAGGGCGGCCGGAATTCGTCGACTGGATCCGGTACCGAGGAGATCTGCC
 GCC**CGCATCGCC**

ATGAGTGTCTCTAAACTCCTCTCTCTGGGCTGTATCTTCTCCCTTGCTACTTTTTTCAGCAGGCCCGGG
 CTAATTCCTCAAGACAGTGTGCCACTGTTGAGGCTTTGAGAAGTGGTATGTGTTGCCAGACCTGTCCCC
 TGTGTCTGGGCTGGGACAGACCCTGTGGCTCATCATCAGGAGGGGCAGATGTGAGGCAGTACTGCA
 GACTCCCGGCCCCACAGCCCTCAGTATCCCATGATGGCAGAGATGATCGGGAGGTCTGGCCCTTGCCT
 TCTTCAATAGGACATGCTACTGCAACGGCAATTTCTCAGGACACAACGTGGGACGTGCCGTCTGGCTG
 GAGAGGAGCTGCCTGTGACCAGAGGTTCTCATAGTCAGGAGAAATCTTCTGGACTTAAGTAAAGAAGAA
 AAGAACCCTTTGTCCGGGCCCTGGATATGGCAAAGCGCACAACCTCACCTTTATTTGTCATTGCCACCA
 GGAGATCAGAAGAAATACTGGGGCCAGATGGCAACACGCCACAATTTGAGAACATTTCCATTTAACTA
 CTTTGTGGACACACTATTACTCAGTCAAAAAGACTTTCTTGGGGTAGGACAGGAAAGCTTTGGTGAA
 GTGGATTTCTCTCATGAGGGACCAGTTTTCTCATGACAGGTACCACCTCCTGCGTCTGGAGAAAG
 ACATGCAGGAAATGTTGCAAGAGCCTTCTTCTCCCTTCTTACTGGAATTTGCAACGGGGAAAAATGT
 CTGTGATATCTGCACGGATGACTTGATGGGATCCAGAAGCAACTTTGATTCCACTCTAATAAGCCCAAC
 TCTGTCTTTTCTCAATGGCGAGTGGTCTGTGACTCCTTGGAAAGATTATGATACCTGGGAACACTTTGTA
 ACAGCACCGAGGATGGGCCAATTAGGAGAAATCCAGCTGGAAATGTGGCCAGACCAATGGTGAACGCTCT
 TCCTGAACCACAGGATGTCGCTCAGTGCCTTGAAGTTGGTTTATTTGACACGCCTCCTTTTTATTCCAAC
 TCTACAAACAGTTTCCGAAACACAGTGAAGGTTACAGTGACCCACGGGAAAGTATGACCTGCTGTTTC
 GAAGTCTTCACAATTTGGCTCATCTATTCTGAATGGAACAGGGGGACAAACCCATTTGTCTCAAATGA
 TCCTATTTTGTCTCCTGCACACCTTACAGATGCAGTCTTTGATGAATGGCTGAGGAGATACAATGCT
 GATATATCCACATTTCCATTGGAATGCCCCTATTGGACATAATAGACAATACAACATGGTGCATTCT
 GGCCCCAGTCACCAACACAGAAATGTTTGTACTGCTCCAGACAACCTGGGATACACTTATGAAATTCA
 ATGGCCAAGTCGGGAGTTTGTGTACTGAGATAATTGCCATAGCAGTAGTTGGCGCTTTGTACTGGTT
 GCACTCATTTTGGGACTGCTTCTATCTGATTCGTCGCCAGACGAGTATGGATGAAGCTAACGACCTC
 TCCTCACTGATCAGTATCAATGCTATGCTGAAGAATATGAAAACTCCAGAACTCAATCAGTCTGTGGT
 C

ACGCGTACGCGGCCGCTCGAGCAGAAACTCATCTCAGAAGAGGATCTGGCAGCAAATGATATCCTGGATT
 ACAAGGATGACGACGATAAGGTTTAA

Protein Sequence:

>RC208595 protein sequence
 Red=Cloning site Green=Tags(s)

MSAPKLLSLGCIFFPLLLFQQARAQFPRQCATVEALRSGMCCPDLSPVSGPGTDRCGSSSRGRCEAVTA
 DSRPHSPQYPHDGRDDREWPLRFFNRTHCNGNFSGHNCGTCRPGWRGAACDQRLIVRRNLLDLKSEE
 KNHFVRLDMAKRTTHPLFVIATRRSEEILGPDGNTQPENISIIYNYFVWTHYYSVKKFTLGVGQESFGE
 VDFSHEGPAFLTWHRYHLLRLEKDMQEMLQEPSFSLPYWNFATGKNVCDICTDDLMSRSNFDSTLISPN
 SVFSQWRVVCDSLEDYDTLGTLCNSTEDGPIRRNPAGNVARPMVQRLPEPQDVAQCLEVLFDTPPFYSN
 STNSFRNTVEGYSPTGKYDPAVRSLHNLHLFLNGTGGQTHLSPNDPIFVLLHTFTDAVFDEWLRRYNA
 DISTFPLENAPIGHNRRQYNMVFPVPPVNTNEMFVTAPDNLGYTYEIQWPSREFSVPEIIAIAVVGALLLV
 ALIFGTASYLIRARRSMDEANQPLLTDQYQCYAEEYEKLNPNQSVV

TRTRPLEQKLISEEDLAANDILDYKDDDDKV

Chromatograms:

https://cdn.origene.com/chromatograms/mk6149_c10.zip

Restriction Sites:

Sgfl-MluI

Cloning Scheme:


ACCN: NM_000550

ORF Size: 1611 bp

OTI Disclaimer: The molecular sequence of this clone aligns with the gene accession number as a point of reference only. However, individual transcript sequences of the same gene can differ through naturally occurring variations (e.g. polymorphisms), each with its own valid existence. This clone is substantially in agreement with the reference, but a complete review of all prevailing variants is recommended prior to use. [More info](#)

OTI Annotation: This clone was engineered to express the complete ORF with an expression tag. Expression varies depending on the nature of the gene.

Components: The ORF clone is ion-exchange column purified and shipped in a 2D barcoded Matrix tube containing 10ug of transfection-ready, dried plasmid DNA (reconstitute with 100 ul of water).

- Reconstitution Method:**
1. Centrifuge at 5,000xg for 5min.
 2. Carefully open the tube and add 100ul of sterile water to dissolve the DNA.
 3. Close the tube and incubate for 10 minutes at room temperature.
 4. Briefly vortex the tube and then do a quick spin (less than 5000xg) to concentrate the liquid at the bottom.
 5. Store the suspended plasmid at -20°C. The DNA is stable for at least one year from date of shipping when stored at -20°C.

RefSeq: [NM_000550.3](#)

RefSeq Size: 2876 bp

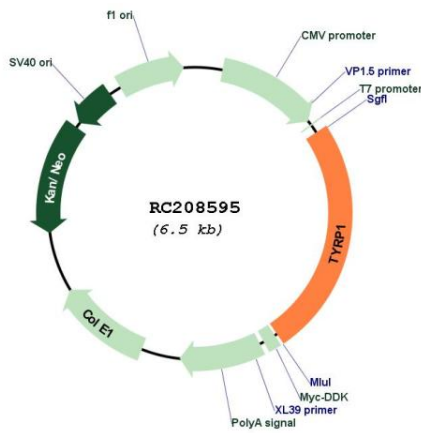
RefSeq ORF: 1614 bp

Locus ID: 7306

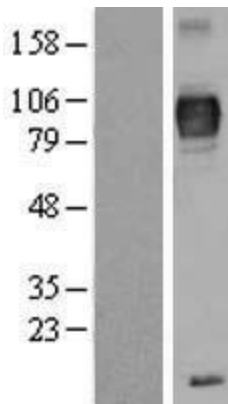
UniProt ID: [P17643](#)

Cytogenetics: 9p23
Domains: tyrosinase
Protein Families: Druggable Genome, Transmembrane
Protein Pathways: Melanogenesis, Metabolic pathways, Tyrosine metabolism
MW: 60.7 kDa
Gene Summary: This gene encodes a melanosomal enzyme that belongs to the tyrosinase family and plays an important role in the melanin biosynthetic pathway. Defects in this gene are the cause of rufous oculocutaneous albinism and oculocutaneous albinism type III. [provided by RefSeq, Mar 2009]

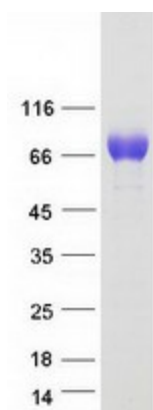
Product images:



Circular map for RC208595



Western blot validation of overexpression lysate (Cat# [LY400187]) using anti-DDK antibody (Cat# [TA50011-100]). Left: Cell lysates from untransfected HEK293T cells; Right: Cell lysates from HEK293T cells transfected with RC208595 using transfection reagent MegaTran 2.0 (Cat# [TT210002]).



Coomassie blue staining of purified TYRP1 protein (Cat# [TP308595]). The protein was produced from HEK293T cells transfected with TYRP1 cDNA clone (Cat# RC208595) using MegaTran 2.0 (Cat# [TT210002]).