

Product datasheet for **RC208575**

CPA4 (NM_016352) Human Tagged ORF Clone

Product data:

Product Type:	Expression Plasmids
Product Name:	CPA4 (NM_016352) Human Tagged ORF Clone
Tag:	Myc-DDK
Symbol:	CPA4
Synonyms:	CPA3
Mammalian Cell Selection:	Neomycin
Vector:	pCMV6-Entry (PS100001)
E. coli Selection:	Kanamycin (25 ug/mL)



[View online »](#)

ORF Nucleotide
Sequence:

>RC208575 ORF sequence
Red=Cloning site Blue=ORF Green=Tags(s)

TTTTGTAATACGACTCACTATAGGGCGGCCGGAATTCGTCGACTGGATCCGGTACCGAGGAGATCTGCC
GCCGCGATCGCC

ATGAGGTGGATACTGTTTCATTGGGGCCCTTATTGGGTCCAGCATCTGTGGCCAAGAAAAATTTTTGGGG
ACCAAGTTTTGAGGATTAATGTCAGAAAATGGAGACGAGATCAGCAAATTGAGTCAACTAGTGAATTCAAA
CAACTTGAAGCTCAATTTCTGGAATCTCCCTCCTCCTCAATCGGCCTGTGGATGTCCTGGTCCCCTCT
GTCAGTCTGCAGGCATTTAAATCCTTCCTGAGATCCCAGGGCTTAGAGTACGCAGTGACAATTGAGGACC
TGCAGGCCCTTTAGACAATGAAGATGATGAAATGCAACACAATGAAGGGCAAGAACGGAGCAGTAATA
CTTCAACTACGGGGCTTACCATTCCCTGGAAGCTATTTACCACGAGATGGACAACATTGCCGCAGACTTT
CCTGACCTGGCGAGGAGGTGAAGATTGGACATTCGTTTAAAACCGGCCGATGTATGTACTGAAGTTCA
GCACTGGGAAAGCGGTGAGGCGGCCGCGCTTTGGCTGAATGCAGGCATCCATCCCGAGAGTGGATCTC
CCAGGCCACTGCAATCTGGACGCAAGGAAGATTGTATCTGATTACCAGAGGGATCCAGCTATCACCTCC
ATCTTGGAGAAAAATGGATATTTTCTTGTTCCTGTGGCCAATCCTGATGGATATGTGTATACTCAAACCT
AAAACCGATTATGGAGGAAGACGCGTCCCAGAAATCCTGGAAGCTCCTGCATTGGTGCTGACCCAAATAG
AACTGGAACGCTAGTTTTGCAGGAAAGGGAGCCAGCAGCAACCCCTTGCTCCGAAGTGTACCATGGACCC
CACGCCAATTCGGAAGTGGAGGTGAAATCAGTGGTAGATTTTCATCAAAAAACATGGGAATTTCAAGGGCT
TCATCGACCTGCACAGCTACTCGCAGCTGCTGTATCCATATGGGTAATCAGTCAAAAAGGCCCCAGA
TGCCGAGGAATCGACAAGGTGGCGAGGCTTGGCCAAAGCTCTGGCTTCTGTGTGGGCACTGAGTAC
CAAGTGGGTCCCACCTGCACCACTGTCTATCCAGCTAGCGGGAGCAGCATCGACTGGGCGTATGACAACG
GCATCAAAATTTGCATTCACATTTGAGTTGAGAGATACCGGGACTTATGGCTTCTCCTGCCAGCTAACCA
GATCATCCCCTGCAGAGGAGACGTGGCTGGGGCTGAAGACCATCATGGAGCATGTGCGGGACAACCTC
TAC

ACGCGTACGCGGCCGCTCGAGCAGAACTCATCTCAGAAGAGGATCTGGCAGCAAATGATATCCTGGATT
ACAAGGATGACGACGATAAGGTTTAA

Protein Sequence:

>RC208575 protein sequence
Red=Cloning site Green=Tags(s)

MRWILFIGALIGSSICGQEKFFGDQVLRINVRNGDEISKLSQLVNSNNLKNLFWKSPSSFNRPVDLVP
VSLQAFKSFRLSQGLEAVTIEDLQALLDNEDDEMQHNEGQERSNNFNFGAYHSLEAIYHEMDNIAADF
PDLARRVKIGHSFENRPMYVLKFTGKGVRRPAVWLNAGIHSREWISQATAIWTARKIVSDYQRDPAITS
ILEKMDIFLLPVANPDGYVYTQTQNLWRKTRSRNPGSSCIGADPNRNWNASFAGKGASDNPCSEVYHGP
HANSEVEVKSVVDFIQKHGNFKGFIDLHSYSQLLMYPYGYSVKKAPDAEELDKVARLAAKALASVSGTEY
QVGPTCTTYPASGSSIDWAYDNGIKFAFTFELRDTGTYGFLLPANQIIPTAEETWLGLKTIMEHVRDNL
Y

TRTRPLEQKLISEEDLAANDILDYKDDDDKV

Chromatograms:

https://cdn.origene.com/chromatograms/mk6149_h07.zip

Restriction Sites:

SgfI-MluI

Cloning Scheme:


ACCN: NM_016352

ORF Size: 1263 bp

OTI Disclaimer: The molecular sequence of this clone aligns with the gene accession number as a point of reference only. However, individual transcript sequences of the same gene can differ through naturally occurring variations (e.g. polymorphisms), each with its own valid existence. This clone is substantially in agreement with the reference, but a complete review of all prevailing variants is recommended prior to use. [More info](#)

OTI Annotation: This clone was engineered to express the complete ORF with an expression tag. Expression varies depending on the nature of the gene.

Components: The ORF clone is ion-exchange column purified and shipped in a 2D barcoded Matrix tube containing 10ug of transfection-ready, dried plasmid DNA (reconstitute with 100 ul of water).

Reconstitution Method:

1. Centrifuge at 5,000xg for 5min.
2. Carefully open the tube and add 100ul of sterile water to dissolve the DNA.
3. Close the tube and incubate for 10 minutes at room temperature.
4. Briefly vortex the tube and then do a quick spin (less than 5000xg) to concentrate the liquid at the bottom.
5. Store the suspended plasmid at -20°C. The DNA is stable for at least one year from date of shipping when stored at -20°C.

RefSeq: [NM_016352.4](#)

RefSeq Size: 2817 bp

RefSeq ORF: 1266 bp

Locus ID: 51200

UniProt ID: [Q9UI42](#)

Cytogenetics: 7q32.2

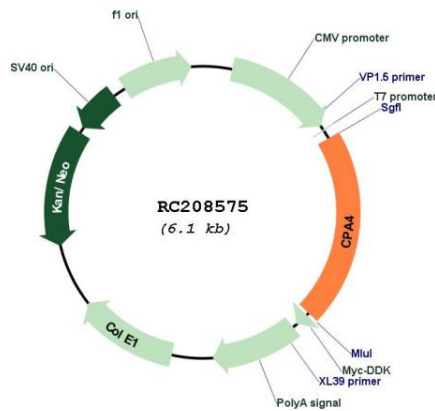
Domains: Zn_carbOpept, Propep_M14

Protein Families: Druggable Genome, Protease, Secreted Protein

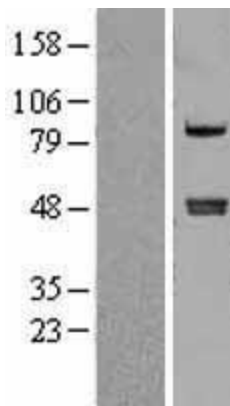
MW: 47.4 kDa

Gene Summary: This gene is a member of the carboxypeptidase A/B subfamily, and it is located in a cluster with three other family members on chromosome 7. Carboxypeptidases are zinc-containing exopeptidases that catalyze the release of carboxy-terminal amino acids, and are synthesized as zymogens that are activated by proteolytic cleavage. This gene could be involved in the histone hyperacetylation pathway. It is imprinted and may be a strong candidate gene for prostate cancer aggressiveness. [provided by RefSeq, Jul 2008]

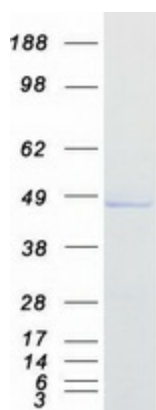
Product images:



Circular map for RC208575



Western blot validation of overexpression lysate (Cat# [LY402543]) using anti-DDK antibody (Cat# [TA50011-100]). Left: Cell lysates from untransfected HEK293T cells; Right: Cell lysates from HEK293T cells transfected with RC208575 using transfection reagent MegaTran 2.0 (Cat# [TT210002]).



Coomassie blue staining of purified CPA4 protein (Cat# [TP308575]). The protein was produced from HEK293T cells transfected with CPA4 cDNA clone (Cat# RC208575) using MegaTran 2.0 (Cat# [TT210002]).