

Product datasheet for RC208570

SLC2A4RG (NM_020062) Human Tagged ORF Clone

Product data:

Product Type: Expression Plasmids
Product Name: SLC2A4RG (NM_020062) Human Tagged ORF Clone
Tag: Myc-DDK
Symbol: SLC2A4RG
Synonyms: GEF; HDBP-1; HDBP1; Si-1-2; Si-1-2-19
Mammalian Cell Selection: Neomycin
Vector: pCMV6-Entry (PS100001)
E. coli Selection: Kanamycin (25 ug/mL)
ORF Nucleotide Sequence: >RC208570 representing NM_020062
 Red=Cloning site Blue=ORF Green=Tags(s)

TTTTGTAATACGACTCACTATAGGGCGGCCGGAATTCGTCGACTGGATCCGGTACCGAGGAGATCTGCC
 GCC**CGATCGCC**

ATGGAGCGCCCCCGCCCCGCGCCGCGGGACCCAGTGCCTGCGGGCCGAGGCGCGTGGCTGC
 GCGCGGAGGGTCCGGGGCCGCGCCGCGCCCGTACGGTGCCACGCCCGCAGGGCTCTTCCGTGGG
 CGGCGGCTTCGCGGGCTTGGAGTTCGCGCGGCCGAGGAGTCGGAGCCGCGGGCTCGGACCTGGGGCC
 CCCCAGCGTGGACGGGGCGCGGGCGGGCCCGGACTCCGTCGGCGCACATCCCCGTCCAGCGCAGA
 GAGCCACCCAGAAAAGCCCGCTGGACGAGGTCATGGCTGCCCTTACAAGCCTGTCCACCAG
 CCCTCTCCTTCTGGGGCCCGGTTGCAGCCTTCAGCCAGAGCCTGGCCTGGAGCCTGGAAGGAGGCC
 CTGGTGGGCCCCAGGCAGCTACAGCAGCAGCAACAGTGGAGACTGGGATGGGACCTGGCCAGTG
 ACCAGTCTCTCCGTCCACCCCGTACCCCACTGCCCCCGAGGCAGCCACTTCTGTGGGGAGCC
 CACCCTGAGAAAAGGAAGAGCCCGGCCAGGTCATGTTCCAGTGTCTGTGGAAGAGTGGCGGAAGGTG
 CTGAGCACGGCGTCGGCGATGCAGAGACACATCCGCTGGTGCACCTGGGAGGCAGGCAGAGCCTGAGC
 AGAGTGATGGTGAGGAGGACTTCTACTACAGAGCTGGATGTTGGTGTGGACACGCTGACCGACGGGT
 GTCCAGCCTGACTCCAGTGTCCCCACGGCCTCCATGCCGCTGCCTCCCCGCTGGAGCTGCCAGAG
 CTGCTGGAGCCCCAGCCCTGCCTAGTCCCTGCGGCGCCTGCCCGCCCTGCCCGCCCCCTGTCC
 TGAGCACCGTTGCTAACCCCAAGTCTGTACAGTGACCGTGTCTACCAGGGCTGCCTGACGCCCGCCCG
 CCTGGAGCCGAGCCACGGAGTTCGGAGCCTGCCACCCGCTTGTCTCCAGGATCGGAGTACCCTG
 AGGAAGCCCGCGGCGACGCGAAGAAGTCCCGAAGGTGTATGGCATGGAGCGCCGGGACCTCTGGTGA
 CAGCCTGCCGCTGGAAGAAAGCTGCCAGCGGTTCTGGAC

ACGCGTACGCGGCCGCTCGAGCAGAACTCATCTCAGAAGAGGATCTGGCAGCAATGATATCCTGGATT
 ACAAGGATGACGACGATAAGGTTTAA



[View online >](#)

Protein Sequence: >RC208570 representing NM_020062
 Red=Cloning site Green=Tags(s)

MERPPPPRAAGRDPSSALRAEAPWLRRAEGPGPRAAPVTVPPTPPQGSSVGGGFAGLEFARPQSEPRASDLGA
 PRTWTGAAAGPRTPSAHIPVPAQRATPGKARLDEVMAAALSTLSPLLLGAPVAAFSPEPGLEPWKEA
 LVRPPGSYSSSSNSGDWGDWLDASDQSSPSTPSPPLPPEAAHFLFGEPTLRKRKSPAQVMFQCLWKSCGKV
 LSTASAMQRHIRLVHLGRQAEPEQSDGEEDFYYTELDVGVDTLTDGLSSLTPVSPTASMPPAFPRLELPE
 LLEPPALPSPLRPPAPPLPPPVLSTVANPQSCHSDRVYQGLTPARLEPQTEVGACPPALSSRIGVTL
 RKPRGDAKKCRKVYGMERRDLWCTACRWKKACQRFLD

TRTRPLEQKLISEEDLAANDILDYKDDDDKV

Chromatograms: https://cdn.origene.com/chromatograms/mg2822_b01.zip

Restriction Sites: SgfI-MluI

Cloning Scheme:



* The last codon before the Stop codon of the ORF

ACCN: NM_020062

ORF Size: 1161 bp

OTI Disclaimer: The molecular sequence of this clone aligns with the gene accession number as a point of reference only. However, individual transcript sequences of the same gene can differ through naturally occurring variations (e.g. polymorphisms), each with its own valid existence. This clone is substantially in agreement with the reference, but a complete review of all prevailing variants is recommended prior to use. [More info](#)

OTI Annotation: This clone was engineered to express the complete ORF with an expression tag. Expression varies depending on the nature of the gene.

Components: The ORF clone is ion-exchange column purified and shipped in a 2D barcoded Matrix tube containing 10ug of transfection-ready, dried plasmid DNA (reconstitute with 100 ul of water).

Reconstitution Method:

1. Centrifuge at 5,000xg for 5min.
2. Carefully open the tube and add 100ul of sterile water to dissolve the DNA.
3. Close the tube and incubate for 10 minutes at room temperature.
4. Briefly vortex the tube and then do a quick spin (less than 5000xg) to concentrate the liquid at the bottom.
5. Store the suspended plasmid at -20°C. The DNA is stable for at least one year from date of shipping when stored at -20°C.

RefSeq: [NM_020062.4](#)

RefSeq Size: 2296 bp

RefSeq ORF: 1164 bp

Locus ID: 56731

UniProt ID: [Q9NR83](#)

Cytogenetics: 20q13.33

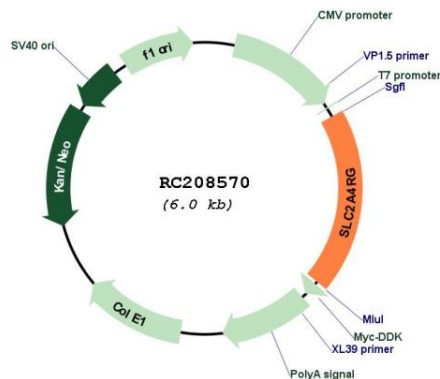
Domains: zf-C2H2

Protein Families: Transcription Factors

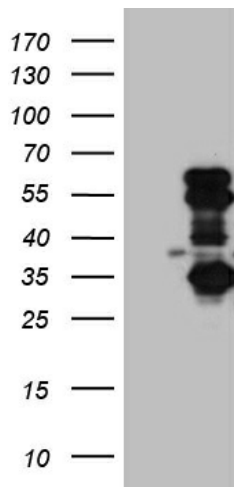
MW: 41.1 kDa

Gene Summary: The protein encoded by this gene is a nuclear transcription factor involved in the activation of the solute carrier family 2 member 4 gene. The encoded protein interacts with another transcription factor, myocyte enhancer factor 2, to activate transcription of this gene. [provided by RefSeq, Jul 2008]

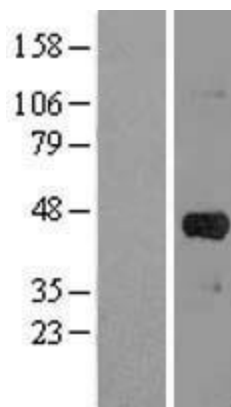
Product images:



Circular map for RC208570



HEK293T cells were transfected with the pCMV6-ENTRY control (Cat# [PS100001], Left lane) or pCMV6-ENTRY SLC2A4RG (Cat# RC208570, Right lane) cDNA for 48 hrs and lysed. Equivalent amounts of cell lysates (5 ug per lane) were separated by SDS-PAGE and immunoblotted with anti-SLC2A4RG (Cat# [TA810378])(1:2000). Positive lysates [LY412651] (100ug) and [LC412651] (20ug) can be purchased separately from OriGene.



Western blot validation of overexpression lysate (Cat# [LY412651]) using anti-DDK antibody (Cat# [TA50011-100]). Left: Cell lysates from untransfected HEK293T cells; Right: Cell lysates from HEK293T cells transfected with RC208570 using transfection reagent MegaTran 2.0 (Cat# [TT210002]).