

Product datasheet for **RC208569**

PRDM14 (NM_024504) Human Tagged ORF Clone

Product data:

Product Type:	Expression Plasmids
Product Name:	PRDM14 (NM_024504) Human Tagged ORF Clone
Tag:	Myc-DDK
Symbol:	PRDM14
Synonyms:	PFM11
Mammalian Cell Selection:	Neomycin
Vector:	pCMV6-Entry (PS100001)
E. coli Selection:	Kanamycin (25 ug/mL)



[View online »](#)

ORF Nucleotide Sequence:

>RC208569 ORF sequence
 Red=Cloning site Blue=ORF Green=Tags(s)

TTTTGTAATACGACTCACTATAGGGCGGCCGGAATTCGTCGACTGGATCCGGTACCGAGGAGATCTGCC
 GCC**CGGATCGCC**

ATGGCTCTACCCCGCCAAGTGAGGCCGTGCCTCAGGACAAGGTGTGCTACCCCGCGGAGAGCAGCCCGC
 AGAACCTGGCCGGTACTACACGCCTTTCCCGTCTATGGACACTACAGAAACAGCCTGGCCACCGTGGA
 GGAAGACTTCCAACCTTTCCGGCAGCTGGAGGCCGACGCTGTGCTGCCCGCCATGCCCCCTTCCCT
 TTCCGGATGGCGCCTCCCTTGTGAGCCCGGTCTGGCCTACAGAGGGAGCCTCTCTACGATCTGCCCT
 GGTACAGCAAGCTGCCACCGTGTACCAATTCCCCACGTCCCCAGGGAAGTGCCGCCCTTCTGAGCAG
 CAGCCACGAGTACGCGGGTGCCAGCAGTGAAGATCTGGGCCACCAATCATTGGTGGCACAACGAGAGT
 GGCCCGTGTGTGACCTGACACTTTAATCCACCGCCCTGCGGATGCTTCTCTGTTACCTGAGGGGC
 TGAGGACCTCCAGTTATTACCTTGTCTACCCAGCAAGCAGTCAAGGATGGTCCCAAACCTCCAACCA
 AGAAGGGAAGTCCCTGCTCGTTCAGTTACCGAGGAGGACCTGCACTTCGTTCTGTACGGGGTCACT
 CCCAGCCTGGAGACCCAGCCAGCCTGCACCATGCGATTTACGGCCTCCTGGTCCCCCAGACAGCTCTG
 GATCTGATTCTTCTCAAACCTCTGGATGAAGACTCCCTTCAACTTCCAGAAGGTCTATGCCTCATGCA
 GACGGTGTGGTGAAGTCCCACATTTTGGTGTGTTCTGCAGTAGTTTTATCGCCAAAGGAGTCAAGTTT
 GGGCCCTTTCAAGGTAAGTGGTCAATGCCAGTGAAGTGAAGACCTACGGAGACAATTCTGTGATGTGGG
 AGATCTTTGAAGTGGTCAATTTGAGCCACTTTATAGATGGAAAAGGAGGTACGGGAACTGGATGTCCTA
 TGTCAACTGTGCCCGCTTCCCAAGGAGCAGAACCTAGTTGTGTGCAGTGTCAAGGGCATAATTTTAT
 GAGAGCTGCAAAGAGATTCATCAGAACCAAGAGCTCCTTGTGTGGTATGGAGACTGCTATGAGAAATTC
 TGGATATTCTGTGAGCCTTCAAGTACACAGCCGGGGAAGCAGCCATCTGGGCCCTCTGAAGAGTCTGC
 AGAAGGCTACAGATGTGAAAGATGTGGGAAGTATTTACCTACAATATTACAGAGATAAGCACCTCAAG
 TACACCCCTGTGTGGACAAGGGCGATAGGAAATTTCCCTGTTCTCTGCAAACGATCCTTTGAGAAGC
 GGGACCGCTTCGGATCCACATTCTTATGTTTATGAGAAGCACCAGCCTCACAAGTGTCTACATGTGG
 GAAATGTTTCTCTCAGTCTTCCAGCCTAAACAAACACATGCGAGTCCACTCTGGAGACAGACCATAACAG
 TGTGTGTATTGTACTAAGAGTTACAGCCTCCAGCATACTCCGCACACACATCAGGCAGCACTCCGGGG
 AGAAGCCCTTCAAATGCAAGTACTGTGGTAAATCTTTGCATCCCATGCTGCCATGACAGCCATGTCCG
 GCGTTCACACAAGGAGGACGATGGCTGCTCATGCAGCATCTGTGGGAAAATCTTCTCAGATCAAGAAACA
 TTCTACTCCACATGAAGTTTCATGAAGACTAC

ACGCGTACGCGGCCGCTCGAGCAGAAACTCATCTCAGAAGAGGATCTGGCAGCAAATGATATCCTGGATT
 ACAAGGATGACGACGATAAGGTTTAA

Protein Sequence:

>RC208569 protein sequence
 Red=Cloning site Green=Tags(s)

MALPRPSEAVPQDKVCYPPESSPQNLAAYYTPFPSYGHYRNSLATVEEDFQFRQLEAAASAAPAMPPFP
 FRMAPLLSPGLGLQREPLYDLWPYSKLPPWYPIPHVPREVPPFLSSSHEYAGASSEDLGHQIIGGDNES
 GPCCGPDTLIPPPPADASLLPEGLRTSPLLPCSPSKQSEDGPKPSNQEKGSPARFQFTEEDLHFLVYGV
 PSLEHPASLHHAISGLLVPPDSSGSDSLPQTLDEDSLQLEGLCLMQTVFGEVPHFVFCSSFIAGKVR
 GPFQGVVNAASEVKTYGDNVSMWEIFEDGHLSHFIDGKGGTGNWMSYVNCARFPKEQNLVAVQCQGHIF
 YTPCVDKGDRKFPKSLCKRSFEKRDRLRIHILHVHEKHPKHCSTCGKCFSQSSSLNKHMRVHSGDRPYQ
 CVYCTKRFTASSILRTHIRQHSGEKPFKCYCGKSFASHAAHDSHVRRSHKEDDGCSCSICGKIFSDQET
 FYSHMKFHEDY

TRTRPLEQKLISEEDLAANDILDYKDDDDKV

Chromatograms:

https://cdn.origene.com/chromatograms/mk6149_a03.zip

Restriction Sites:

Sgfl-Mlul

Cloning Scheme:


ACCN: NM_024504

ORF Size: 1713 bp

OTI Disclaimer: The molecular sequence of this clone aligns with the gene accession number as a point of reference only. However, individual transcript sequences of the same gene can differ through naturally occurring variations (e.g. polymorphisms), each with its own valid existence. This clone is substantially in agreement with the reference, but a complete review of all prevailing variants is recommended prior to use. [More info](#)

OTI Annotation: This clone was engineered to express the complete ORF with an expression tag. Expression varies depending on the nature of the gene.

Components: The ORF clone is ion-exchange column purified and shipped in a 2D barcoded Matrix tube containing 10ug of transfection-ready, dried plasmid DNA (reconstitute with 100 ul of water).

- Reconstitution Method:**
1. Centrifuge at 5,000xg for 5min.
 2. Carefully open the tube and add 100ul of sterile water to dissolve the DNA.
 3. Close the tube and incubate for 10 minutes at room temperature.
 4. Briefly vortex the tube and then do a quick spin (less than 5000xg) to concentrate the liquid at the bottom.
 5. Store the suspended plasmid at -20°C. The DNA is stable for at least one year from date of shipping when stored at -20°C.

RefSeq: [NM_024504.4](#)

RefSeq Size: 2344 bp

RefSeq ORF: 1716 bp

Locus ID: 63978

UniProt ID: [Q9GZV8](#)

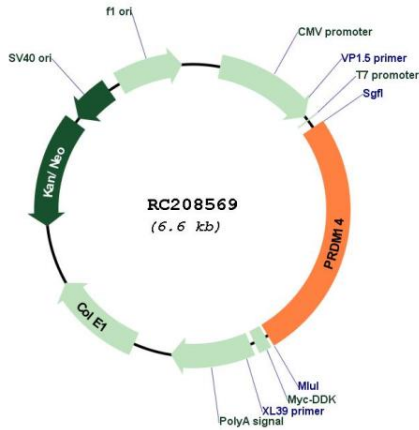
Cytogenetics: 8q13.3

Protein Families: Transcription Factors

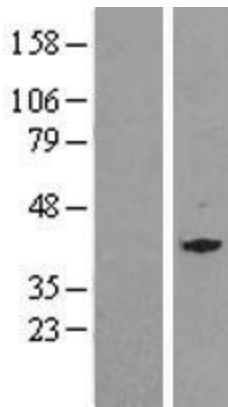
MW: 64.1 kDa

Gene Summary: This gene encodes a member of the PRDI-BF1 and RIZ homology domain containing (PRDM) family of transcriptional regulators. The encoded protein may possess histone methyltransferase activity and plays a critical role in cell pluripotency by suppressing the expression of differentiation marker genes. Expression of this gene may play a role in breast cancer. [provided by RefSeq, Dec 2011]

Product images:



Circular map for RC208569



Western blot validation of overexpression lysate (Cat# [LY402995]) using anti-DDK antibody (Cat# [TA50011-100]). Left: Cell lysates from untransfected HEK293T cells; Right: Cell lysates from HEK293T cells transfected with RC208569 using transfection reagent MegaTran 2.0 (Cat# [TT210002]).