

## Product datasheet for **RC208565**

### **FAM83A (NM\_032899) Human Tagged ORF Clone**

#### **Product data:**

Product Type:	Expression Plasmids
Product Name:	FAM83A (NM_032899) Human Tagged ORF Clone
Tag:	Myc-DDK
Symbol:	FAM83A
Synonyms:	BJ-TSA-9
Mammalian Cell Selection:	Neomycin
Vector:	pCMV6-Entry (PS100001)
E. coli Selection:	Kanamycin (25 ug/mL)



[View online »](#)

**ORF Nucleotide Sequence:**

>RC208565 ORF sequence  
 Red=Cloning site Blue=ORF Green=Tags(s)

TTTTGTAATACGACTCACTATAGGGCGGCCGGAATTCGTCGACTGGATCCGGTACCGAGGAGATCTGCC  
 GCC**CGGATCGCC**

ATGAGCCGGTCAAGGCACCTGGCAAAATCCGGAAGCGTCTGGAAGATGTCAAGAGCCAGTGGTCCGGC  
 CAGCCAGGGCTGACTTTAGTGACAACGAGAGTGCCCGGCTGGCCACGACGCCCTTTGGATGGGGTTT  
 TGAAGCCTACTGGCGGTGCTCAGCCAGGAAGGCGAGGTGGACTTCTTGTCTCGGTGGAGGCCAGTAC  
 ATCCAGGCCAGGCCAGGGAGCCCCGTGTCCCCAGACACCCTGGGAGGGGCGGAAGCAGGCCCTAAGG  
 GACTGGACTCCAGCTCCCTACAGTCCGGCACCTACTTCCCTGTGGCCTCAGAGGGCAGCGAGCCGCCCT  
 ACTGCACAGCTGGGCCTCAGCTGAGAAGCCCTACCTGAAGGAAAAATCCAGCGCCACTGTGTACTTCCAG  
 ACCGTCAAGCACAACAACATCAGAGACCTCGTCCGCCGCTGCATACCCGGACTAGCCAGGTCTGGTCA  
 TCCTGATGGATGTGTTACGGATGTGGAGATCTTCTGTGACATTCTAGAGGCAGCCAACAAGCGTGGGGT  
 GTTCGTTTGTGTCTCCTGGACCAGGGAGGTGAAGCTTCCAGGAGATGTGTGACAAAGTCCAGATC  
 TCTGACAGTCACCTCAAGAACATTTCCATCCGGAGTGTGAAGGAGAGATATACTGTGCCAAGTCAGGCA  
 GGAAATTCGCTGGCCAAATCCGGGAGAAGTTCATCATCTCGGACTGGAGATTTGTCTGTCTGGATCTTA  
 CAGCTTACCTGGCTCTGCGGACACGTGCACCGGAACATCCTCTCCAAGTTCACAGGCCAGGCGGTGGAG  
 CTGTTTACGAGGAGTTCGCCACCTCTACGCCTCCTCCAAGCCTGTGATGGGCCTGAAGTCCCCCGGGC  
 TGGTCGCCCCCGTCCCGCCCGGAGCAGCCCGGCCAATGGCCGCCTTAGCAGCAGCAGTGGTCCGCCAG  
 TGACCGCACGTCCTCAACCCCTCAGCGGCCGCTCGGCAGGCAGCCACCCCGGTACCCGAAGTGTGTCC  
 GCGTCTCAGGGCCCTGTAGCCCCGCGGCCACACCCGCCTCCACCCCGCCGGTCCAGCCCCACCAAG  
 GCCCTTGGGGAGCCCCGAGTCCCAGGCCACCTCTCCCGCGGCCCCACGACGGCCCGCCCGCGCTGT  
 CTACAGCAACCTGGGGGCTACAGGCCACGCGGCTGCAGCTGGAGCAGCTGGGCCTGGTCCGAGGCTG  
 ACTCAACCTGGAGGCCCTTCTGCAGGCTCCCTCACTTC

**ACGCGT**ACGCGGCCGCTCGAGCAGAACTCATCTCAGAAGAGGATCTGGCAGCAATGATATCCTGGATT  
 ACAAGGATGACGACGATAAGGTTTAA

**Protein Sequence:**

>RC208565 protein sequence  
 Red=Cloning site Green=Tags(s)

MSRSRHLGKIRKRELDVKSQWVRPARADFSDNESARLATDALLDGGSEAYWRVLSQEGEVDFLSSVEAQY  
 IQAQAREPPCPPDTLGGAEAGPKGLDSSSLQSGTYFPVASEGSEPALHLSWASAEKPYLKEKSSATVYFQ  
 TVKHNNIRDLVRRICITRISQVLVILMDVFTDVEIFCDILEAANKRGVFCVLLDQGGVKLFQEMCDKQVI  
 SDSHLKNI SIRVEGEIYCAKSGRKFAGQIREKFIISDWRFLVSGSYSFTWLCGHVHRNILSKFTGQAVE  
 LFDEEFRHLYASSKPVMLKSPRLVAPVPPGAAPANGRLSSSSGSASDRSSNPFSGRSAGSHPGTRSVS  
 ASSGPCSPAAPHPPPPRFQPHQGPWAPSPQAHLSPRPHDGPAAVYSNLGAYRPTRLQLEQLGLVPRL  
 TPTWRPFLQASPHF

**TR**TRPLEQKLISEEDLAANDILDYKDDDDKV

**Chromatograms:**

[https://cdn.origene.com/chromatograms/mk6553\\_c06.zip](https://cdn.origene.com/chromatograms/mk6553_c06.zip)

**Restriction Sites:**

Sgfl-Mlul

**Cloning Scheme:**


**ACCN:** NM\_032899

**ORF Size:** 1302 bp

**OTI Disclaimer:** The molecular sequence of this clone aligns with the gene accession number as a point of reference only. However, individual transcript sequences of the same gene can differ through naturally occurring variations (e.g. polymorphisms), each with its own valid existence. This clone is substantially in agreement with the reference, but a complete review of all prevailing variants is recommended prior to use. [More info](#)

**OTI Annotation:** This clone was engineered to express the complete ORF with an expression tag. Expression varies depending on the nature of the gene.

**Components:** The ORF clone is ion-exchange column purified and shipped in a 2D barcoded Matrix tube containing 10ug of transfection-ready, dried plasmid DNA (reconstitute with 100 ul of water).

**Reconstitution Method:**

1. Centrifuge at 5,000xg for 5min.
2. Carefully open the tube and add 100ul of sterile water to dissolve the DNA.
3. Close the tube and incubate for 10 minutes at room temperature.
4. Briefly vortex the tube and then do a quick spin (less than 5000xg) to concentrate the liquid at the bottom.
5. Store the suspended plasmid at -20°C. The DNA is stable for at least one year from date of shipping when stored at -20°C.

**RefSeq:** [NM\\_032899.6](#), [NP\\_116288.2](#)

**RefSeq Size:** 4596 bp

**RefSeq ORF:** 1305 bp

**Locus ID:** 84985

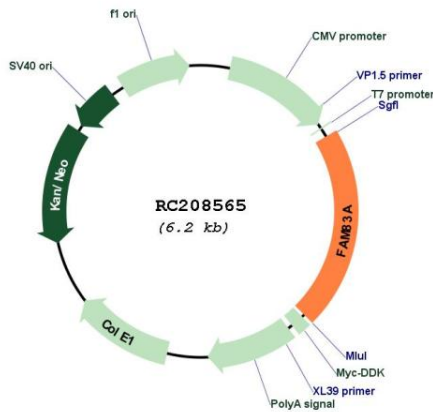
**UniProt ID:** [Q86UY5](#)

**Cytogenetics:** 8q24.13

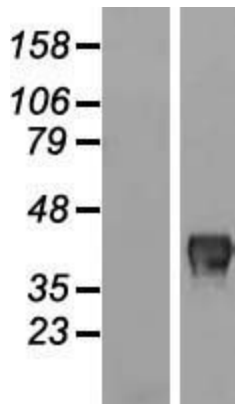
**MW:** 47.5 kDa

**Gene Summary:** Probable proto-oncogene that functions in the epidermal growth factor receptor/EGFR signaling pathway. Activates both RAS/MAPK and PI3K/AKT/TOR signaling cascades downstream of EGFR. Required for the RAS/MAPK signaling cascade activation upon EGFR stimulation, it also activates both signaling cascades independently of EGFR activation. [UniProtKB/Swiss-Prot Function]

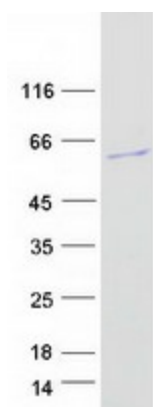
**Product images:**



Circular map for RC208565



Western blot validation of overexpression lysate (Cat# [LY409861]) using anti-DDK antibody (Cat# [TA50011-100]). Left: Cell lysates from untransfected HEK293T cells; Right: Cell lysates from HEK293T cells transfected with RC208565 using transfection reagent MegaTran 2.0 (Cat# [TT210002]).



Coomassie blue staining of purified FAM83A protein (Cat# [TP308565]). The protein was produced from HEK293T cells transfected with FAM83A cDNA clone (Cat# RC208565) using MegaTran 2.0 (Cat# [TT210002]).