

## Product datasheet for RC208561

### WNT10A (NM\_025216) Human Tagged ORF Clone

#### Product data:

|                           |   |
|---------------------------|---|
| Product Type:             | Expression Plasmids   |
| Product Name:             | WNT10A (NM_025216) Human Tagged ORF Clone                                   |
| Tag:                      | Myc-DDK   |
| Symbol:                   | WNT10A  |
| Synonyms:                 | OIDD; SSPS; STHAG4  |
| Mammalian Cell Selection: | Neomycin  |
| Vector:                   | pCMV6-Entry (PS100001)  |
| E. coli Selection:        | Kanamycin (25 ug/mL)  |
| ORF Nucleotide Sequence:  | >RC208561 representing NM_025216<br>Red=Cloning site Blue=ORF Green=Tags(s) |

TTTTGTAATACGACTCACTATAGGGCGGCCGGAATTCGTCGACTGGATCCGGTACCGAGGAGATCTGCC  
GCC**CGATCGCC**

ATGGGCAGCGCCACCCTCGCCCTGGCTGCGGCTCCGACCCAGCCCCAGCCGCGGCCAGCGCTCTGGG  
TGCTCCTGTTCTTCTACTGCTGCTGGCTGCCATGCCAGGTCAGCACCCAATGACATTCTGGACCT  
CCGCTCCCCCGGAGCCCGTGTCAATGCCAACACAGTGTGCCTAACATTGCCAGGCTGAGCCGGCGG  
CAGATGGAGGTGTGTGCGTCACTGATGTGGCTGCCTCAGCCATACAGGGCATCCAGATCGCCATCC  
ACGAATGCCAACCAATTCAGGGACCAGCGCTGGAAGTCTCAAGCCTGGAGACTCGCAACAAGATCCC  
CTATGAGAGTCCCATCTTCAGCAGAGGTTCCGAGAGAGCGCTTTTGCCTACGCCATCGCAGCAGCTGGC  
GTGGTGCACGCCGTGTCCAATGCGTGTGCCCTGGGCAAAGTGAAGGCCTGTGGCTGTGATGCGTCCCGGC  
GAGGGGACGAGGAGGCCTTCCGTAGGAAGTGCACCGCTTACAAGTGGATGCACTGCAGCGTGGTAAGGG  
CCTGAGCCATGGGGTCCCGAACACCCAGCCCTGCCACAGCCAGCCAGGCCTGCAGGACTCCTGGGAG  
TGGGGCGGCTGCAGCCCCGACATGGGCTTCGGGGAGCGCTTTTCTAAGGACTTTCTGGACTCCCGGGAGC  
CTCACAGAGACATCCACGCGAGAATGAGGCTTCACAACAACCGAGTTGGGAGGCAGGCAGTGTGGAGAA  
CATGCGGGGAAAGTCAAGTGCCACGGCACGTCAGGCAGCTGCCAGCTCAAGACGTGCTGGCAGGTGACG  
CCCGAGTCCGACCCGTGGGGCGCTGCTGCGCAGCCGCTTCCACCGCGCCAGCTATCCGGCCGCACA  
ACCGCAACGGCGGCCAGCTGGAGCCGGGCCAGCGGGGGCACCCCTCGCCGGCTCCGGGCGCTCCCGGGCC  
GCGCCGACGGGCCAGCCCCGCGACCTGCTACTTCGAAAAGTCTCCGACTTCTGCGAGCGCAGGCCG  
CGCCTGGACTCGGCGGGCACCCTGGGCCGCTGTGCAACAAGAGCAGCGCCGGCTCGGATGGCTGCGGCA  
GCATGTGCTGCGGCCGCGCCACAACATCCTGCGCCAGACGCGCAGCGAGCGCTGCCACTGCCGCTTCCA  
CTGGTGTGTTCTGTTGCTGCGAAGAGTGCCGCATACCGAGTGGGTGACGCTGTGCAAG

**ACGCGT**ACGCGGCCGCTCGAGCAGAAACTCATCTCAGAAGAGGATCTGGCAGCAAATGATATCCTGGATT  
ACAAGGATGACGACGATAAGGTTTAA



[View online »](#)

**Protein Sequence:** >RC208561 representing NM\_025216  
Red=Cloning site Green=Tags(s)

MGSAHPRPWLRLRPQPQPRPALWVLLFFLLLLAAAMP RSAPNDILDRLPPEPVLNANTVCLTLPGLSRR  
 QMEV CVRHPDVAA SAIQGIQIAIHECQHFRDQRWNCSSLETRNKIPYESP IFSRGFRESAFAYAIAAAG  
 VVHAVSNACALGKLKACGCDASRRGDEEAFRRK LHLRLQDALQRGKGLSHGVPEHPALPTASPLQDSWE  
 WGGCSPDMGFGERFSKDFLDSREPHRDIHARMRLHNNRVGRQAVMENMRRKCKCHGTS GSCQLKTCWQVT  
 PEFRTV GALLRSRFRATLIRPHNRNGQL EPGPAGAPSPAGAPGPRRRASPADLVYFEKSPDFCEREP  
 RLDSAGTVGRLCNKSSAGSDGCGSMCCGRGHNILRQTRSERCHCRFHWCFFVCEECRITWVSVCK

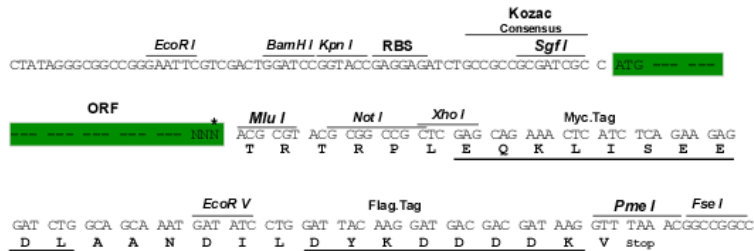
TRTRPLEQKLISEEDLAANDILDYKDDDDKV

**Chromatograms:** [https://cdn.origene.com/chromatograms/mg2636\\_h01.zip](https://cdn.origene.com/chromatograms/mg2636_h01.zip)

**Restriction Sites:** SgfI-MluI

**Cloning Scheme:**

Cloning sites used for ORF Shuttling:



\* The last codon before the Stop codon of the ORF

**ACCN:** NM\_025216

**ORF Size:** 1251 bp

**OTI Disclaimer:** The molecular sequence of this clone aligns with the gene accession number as a point of reference only. However, individual transcript sequences of the same gene can differ through naturally occurring variations (e.g. polymorphisms), each with its own valid existence. This clone is substantially in agreement with the reference, but a complete review of all prevailing variants is recommended prior to use. [More info](#)

**OTI Annotation:** This clone was engineered to express the complete ORF with an expression tag. Expression varies depending on the nature of the gene.

**Components:** The ORF clone is ion-exchange column purified and shipped in a 2D barcoded Matrix tube containing 10ug of transfection-ready, dried plasmid DNA (reconstitute with 100 ul of water).

**Reconstitution Method:**

1. Centrifuge at 5,000xg for 5min.
2. Carefully open the tube and add 100ul of sterile water to dissolve the DNA.
3. Close the tube and incubate for 10 minutes at room temperature.
4. Briefly vortex the tube and then do a quick spin (less than 5000xg) to concentrate the liquid at the bottom.
5. Store the suspended plasmid at -20°C. The DNA is stable for at least one year from date of shipping when stored at -20°C.

**RefSeq:** [NM\\_025216.3](#)

**RefSeq Size:** 2375 bp

**RefSeq ORF:** 1254 bp

**Locus ID:** 80326

**UniProt ID:** [Q9GZT5](#)

**Cytogenetics:** 2q35

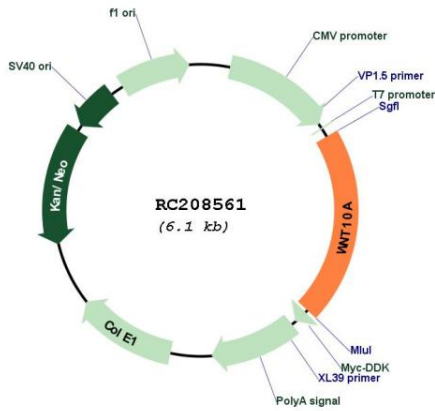
**Protein Families:** Secreted Protein, Transmembrane

**Protein Pathways:** Basal cell carcinoma, Hedgehog signaling pathway, Melanogenesis, Pathways in cancer, Wnt signaling pathway

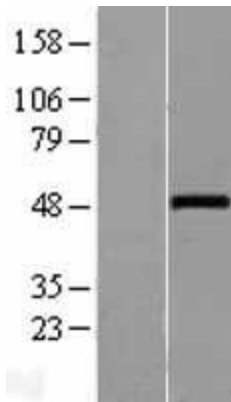
**MW:** 42.4 kDa

**Gene Summary:** The WNT gene family consists of structurally related genes which encode secreted signaling proteins. These proteins have been implicated in oncogenesis and in several developmental processes, including regulation of cell fate and patterning during embryogenesis. This gene is a member of the WNT gene family. It is strongly expressed in the cell lines of promyelocytic leukemia and Burkitt's lymphoma. In addition, it and another family member, the WNT6 gene, are strongly coexpressed in colorectal cancer cell lines. The gene overexpression may play key roles in carcinogenesis through activation of the WNT-beta-catenin-TCF signaling pathway. This gene and the WNT6 gene are clustered in the chromosome 2q35 region. [provided by RefSeq, Jul 2008]

Product images:



Circular map for RC208561



Western blot validation of overexpression lysate (Cat# [LY403062]) using anti-DDK antibody (Cat# [TA50011-100]). Left: Cell lysates from untransfected HEK293T cells; Right: Cell lysates from HEK293T cells transfected with RC208561 using transfection reagent MegaTran 2.0 (Cat# [TT210002]).