

Product datasheet for RC208559

Eph receptor B4 (EPHB4) (NM_004444) Human Tagged ORF Clone

Product data:

Product Type:	Expression Plasmids
Product Name:	Eph receptor B4 (EPHB4) (NM_004444) Human Tagged ORF Clone
Tag:	Myc-DDK
Symbol:	Eph receptor B4
Synonyms:	CMAVM2; HFASD; HTK; LMPHM7; MYK1; TYRO11
Mammalian Cell Selection:	Neomycin
Vector:	pCMV6-Entry (PS100001)
E. coli Selection:	Kanamycin (25 ug/mL)
ORF Nucleotide Sequence:	>RC208559 representing NM_004444 Red=Cloning site Blue=ORF Green=Tags(s)

TTTTGTAATACGACTCACTATAGGGCGGCCGGAATTCGTCGACTGGATCCGGTACCGAGGAGATCTGCC
GCC**CGATCGCC**

ATGGAGCTCCGGGTGCTGCTCTGCTGGGCTTCGTTGGCCGACGCTTTGGAAGAGACCCTGCTGAACACAA
AATTGGAACTGCTGATCTGAAGTGGGTGACATTCCTCAGGTGGACGGGCAGTGGGAGAACTGAGCGG
CCTGGATGAGGAACAGCACAGCGTGCACCTACGAAGTGTGTGACGTGCAGCGTGCCCCGGCCAGGCC
CACTGGCTTCGCACAGGTTGGTCCCACGGCGGGCGCCGTCCACGTGTACGCCACGCTGCGCTTACCA
TGCTCGAGTGCCTGTCCCTGCCTCGGGCTGGGCGCTCCTGCAAGGAGACCTTCACCGTCTTACTATGA
GAGCGATGCGGACACGGCCACGGCCCTCACGCCAGCCTGGATGGAGAACCCTACATCAAGTGGACACG
GTGGCCGCGGAGCATCTACCCGGAAGCGCCCTGGGGCCGAGGCCACCGGAAGGTGAATGTCAAGACGC
TGCGTCTGGGACCCTCAGCAAGGCTGGCTTCTACCTGGCCTTCCAGGACCAGGGTGCCTGCATGGCCCT
GCTATCCTGCACCTCTTCTACAAAAAGTGCGCCAGCTGACTGTGAACCTGACTCGATTCCCGGAGACT
GTGCTCGGGAGCTGGTTGTGCCGTGGCCGTAGCTGCGTGGTGGATGCCGTCCCCGCCCTGGCCCCA
GCCCCAGCCTCTACTGCCGTGAGGATGGCCAGTGGGCCGAACAGCCGGTACGGGCTGCAGCTGTGCTCC
GGGTTTCGAGGCAGCTGAGGGGAACACCAAGTCCGAGCCTGTGCCAGGGCACCTCAAGCCCCGTCA
GGAGAAGGTCCTGCCAGCCATGCCAGCCAATAGCCACTTAACACCATTTGGATCAGCCGTCTGCCAGT
GCCGCGTCGGGTACTTCCGGGCACGCACAGACCCCGGGGTGCACCCTGCACCACCCTCCTTCGGCTCC
GCGGAGCGTGGTTTCCCGCCTGAACGGCTCCTCCCTGCACCTGGAATGGAGTGCCCCCTGGAGTCTGGT
GGCCGAGAGGACCTCACCTACGCCCTCCGCTGCCGGGAGTGCCGACCCGGAGGCTCCTGTGCGCCCTGCG
GGGAGACCTGACTTTTGACCCCGGCCCGGGACCTGGTGGAGCCCTGGTGGTGGTTCGAGGGCTACG
TCCTGACTTACCTATACCTTTGAGGTCACTGCATTGAACGGGTATCCTCCTTAGCCACGGGGCCCGTC
CCATTTGAGCCTGTCAATGTCACCACTGACCGAGAGGTACCTCCTGCAGTGTCTGACATCCGGGTGACGC
GGTCTCACCCAGCAGCTTGAGCCTGGCCTGGGCTGTTCCCGGGCACCCAGTGGGGCTGTGCTGGACTA
CGAGGTCAAATACCATGAGAAGGGCGCCGAGGGTCCCAGCAGCGTGCGGTTCTGAAGACGTCAGAAAAC



[View online »](#)

CGGGCAGAGCTGCGGGGCTGAAGCGGGGAGCCAGCTACCTGGTGCAGGTACGGGCGCGCTCTGAGGCCG
 GCTACGGGCCCTTCGGCCAGGAACATCACAGCCAGACCCAACTGGATGAGAGCGAGGGCTGGCGGGAGCA
 GCTGGCCCTGATTGCGGGCACGGCAGTCGTGGGTGTGGTCTGGTCTGGTGGTCAATTGTGGTCGCGATT
 CTCTGCCTCAGGAAGCAGAGCAATGGGAGAGAAGCAGAATATTCGGACAAACACGGACAGTATCTCATCG
 GACATGGTACTAAGGTCTACATCGACCCCTTCACTTATGAAGACCCTAATGAGGCTGTGAGGGAATTTGC
 AAAAGAGATCGATGTCTCTACGTCAAGATTGAAGAGGTGATTGGTGCAGGTGAGTTTGGCGAGGTGTGT
 CGGGGGCGGCTCAAGGCCAGGGAAGAAGAGAGCTGTGTGGCAATCAAGACCCTGAAGGGTGGCTACA
 CGGAGCGGCAGCGCGTGAATTTCTGAGCGAGGCTCCATCATGGCCAGTTCGAGCACCCCAATATCAT
 CCGCCTGGAGGGCGTGGTACCAACAGCATGCCCGTCATGATTCTCACAGAGTTCATGGAGAACGGCGCC
 CTGGACTCCTTCTGCGGCTAAACGACGGACAGTTCACAGTCATCCAGCTCGTGGGCATGCTGCGGGGCA
 TCGCCTCGGGCATGCGGTACCTTGCCGAGATGAGCTACGTCCACCAGACCTGGCTGCTCGCAACATCT
 AGTCAACAGCAACCTCGTCTGCAAAGTGTCTGACTTTGGCCTTTCCCGATTCTGGAGGAGAACTTTCC
 GATCCCACCTACACGAGTCCCTGGGAGAAAGATTCCCATCCGATGGACTGCCCGGAGGCCATTGCCT
 TCCGGAAGTTCACCTCCGCCAGTGATGCCTGGAGTACGGGATTGTGATGTGGGAGGTGATGTCATTTGG
 GGAGAGGCGTACTGGGACATGAGCAATCAGGACGTGATCAATGCCATTGAACAGGACTACCGGCTGCC
 CGCCCCCAGACTGTCCCACCTCCCTCCACCAGCTCATGTGGACTGTTGGCAGAAAGACCGGAATGCC
 GGCCCCGCTTCCCCAGGTGGTACGCGCCCTGGACAAGATGATCCGGAACCCCGCCAGCCTCAAATCGT
 GGCCCGGAGAAATGGCGGGGCTCACACCTCTCTGGACCAGCGGCAGCCTCACTACTAGCTTTTGGC
 TCTGTGGGCGAGTGGCTTCGGGCATCAAAATGGGAAGATACGAAGAAAGTTTCGAGCCGCTGGCTTTG
 GCTCCTTCGAGCTGGTACGCCAGATCTCTGCTGAGGACCTGCTCCGAATCGGAGTCACTCTGGCGGGACA
 CCAGAAGAAAATCTTGGCCAGTGTCCAGCACATGAAGTCCAGGCCAAGCCGGGAACCCCGGTGGGACA
 GGAGGACCGGCCCGCAGTAC

ACGCGTACGCGGCGCTCGAGCAGAACTCATCTCAGAAGAGGATCTGGCAGCAAATGATATCCTGGATT
 ACAAGGATGACGACGATAAGTTTAA

Protein Sequence:

>RC208559 representing NM_004444
 Red=Cloning site Green=Tags(s)

MELRVLLCWASLAAALEETLLNKTLETADLKWVTFPQVDGQWEELSGLDEEQHSVRTYEVCVQVRAPGQA
 HWLRTGWVPRRGAVHVYATLRF TMLECLSLPRAGRSCKETFTVFYVESDADTATALTPAWMENPYIKVDT
 VAAEHL TRKRPGA EATGKVNKTLRLGPLSKAGFYLA FQDQGACMALLSLHLFYKKAQLTVNLTRFPET
 VPREL VVPVAGSCVVDVAVPAGPSPSLYCREGQWAEQPV TGCSCAPGFEEAEGNTKCRACAQGTFFKPLS
 GEGSCQPCPANSNNTIGSAVCQCRVGYFRARTDPRGAPCTTPPSAPRSVVSRLNGSSLHLEWSAPLESG
 GREDLTYALRCRECRPGGSCAPCGDLTFDPGPRDLVEPWWVVRGLRPFDTYTFEVTALNGVSSLATGPV
 PFEPVNVTTDREVPVAVSDIRVTRSSPSSLAWAVPRAPSGAVLDYEVKYHEKGAEGPSSVRFLKTSN
 RAELRGLKRGASYLVQVRARSEAGYGFQGEHHSQTQLDESEGWREQLAL IAGTAVVGVVLLVVIIVAV
 LCLRKQSNGREAEYSKDHQYLIGHGTVYIDPFTYEDPNEAVREFAKEIDVSYVKEIEVIGAGEFGEVC
 RGRLKAPGKKECVAIKTLKGGYTERQRREFLSEASIMGQFEHPNIIIRLEGVVTNSMPVMILTEFMENGA
 LDSFLRLNDGQFTVIQLVGLRGIASGMRYLAEMSYVHRDLAARNILVNSNLVCKVSDFGLSRFLSENS
 DPTYTSSLGGKIPIRWTAPEAIAFRKFTSASDAWSYGIVMWEVMSFGERPYWMSNQDVINAIEQDYRLP
 PPPDCPTSLHQLMLDCWQKDRNARPRFPQVVSALDKMIRNPASLKI VARENGGASHPLLDQRQPHYSAFG
 SVGEWLRAIKMGRYEESFAAGFGSFELVSQISAEDLLRIGVTLAGHQKKILASVQHMSQAKPGTGGT
 GGPAPQY

TRTRPLEQKLI SEEDLAANDILDYKDDDDKV

Chromatograms:

https://cdn.origene.com/chromatograms/mg2997_g04.zip

Restriction Sites:

Sgfl-MluI

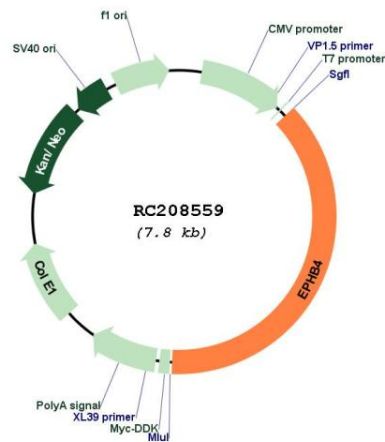
RefSeq ORF: 2964 bp
Locus ID: 2050
UniProt ID: [P54760](#)
Cytogenetics: 7q22.1
Domains: pkinase, EPH_lbd, TyrKc, SAM, S_TKc, FN3
Protein Families: Druggable Genome, Protein Kinase, Transmembrane

Protein Pathways: Axon guidance

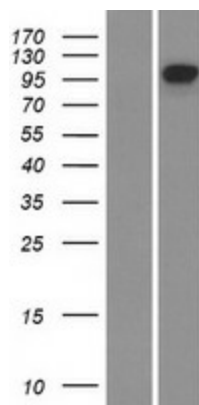
MW: 108.27 kDa

Gene Summary: Ephrin receptors and their ligands, the ephrins, mediate numerous developmental processes, particularly in the nervous system. Based on their structures and sequence relationships, ephrins are divided into the ephrin-A (EFNA) class, which are anchored to the membrane by a glycosylphosphatidylinositol linkage, and the ephrin-B (EFNB) class, which are transmembrane proteins. The Eph family of receptors are divided into 2 groups based on the similarity of their extracellular domain sequences and their affinities for binding ephrin-A and ephrin-B ligands. Ephrin receptors make up the largest subgroup of the receptor tyrosine kinase (RTK) family. The protein encoded by this gene binds to ephrin-B2 and plays an essential role in vascular development. [provided by RefSeq, Jul 2008]

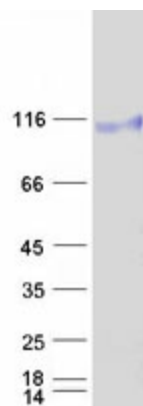
Product images:



Circular map for RC208559



Western blot validation of overexpression lysate (Cat# [LY417981]) using anti-DDK antibody (Cat# [TA50011-100]). Left: Cell lysates from untransfected HEK293T cells; Right: Cell lysates from HEK293T cells transfected with RC208559 using transfection reagent MegaTran 2.0 (Cat# [TT210002]).



Coomassie blue staining of purified EPHB4 protein (Cat# [TP308559]). The protein was produced from HEK293T cells transfected with EPHB4 cDNA clone (Cat# RC208559) using MegaTran 2.0 (Cat# [TT210002]).