

Product datasheet for **RC208553**

Naked1 (NKD1) (NM_033119) Human Tagged ORF Clone

Product data:

Product Type:	Expression Plasmids
Product Name:	Naked1 (NKD1) (NM_033119) Human Tagged ORF Clone
Tag:	Myc-DDK
Symbol:	Naked1
Synonyms:	Naked1
Mammalian Cell Selection:	Neomycin
Vector:	pCMV6-Entry (PS100001)
E. coli Selection:	Kanamycin (25 ug/mL)



[View online »](#)

ORF Nucleotide Sequence:

>RC208553 representing NM_033119
 Red=Cloning site Blue=ORF Green=Tags(s)

TTTTGTAATACGACTCACTATAGGGCGGCCGGAATTCGTCGACTGGATCCGGTACCGAGGAGATCTGCC
 GCC**CGGATCGCC**

ATGGGAAACTTCACTCCAAGCCGGCCCGTGTGCAAGCGCAGGGAGAGCCCGAAGGTGACAGCTTCG
 CCGTGAGCGCTGCTGGCTCGGAAGGGCATCGAGGAGTGGATCGGGAGACAGCGCTGCCGGCGGTGT
 CTCGGGACCCCGACAGCTGCGGTTGGCGGGACCATAGGCCGAAGCACCCGGGAGCTCGTGGCGACGTG
 TTGAGAGACAGCTCAGCGAGGAAGAGGAGGACGACTTTCGGCTGGAAGTGGCCCTGCCTCTGAGAAGA
 CTGACGGGCTGGGACGGAGATGAGAAGAAGTGGAGAGAGTGAAGCAACCTGCCAGGCTCCAAGAA
 GCAGCTGAAGTTGAAGAGCTCCAGTGCAGCTGTCCATGGAGGAGGACAGCCGGCAGGAGTGGACCTC
 ACCCTGTATGACTTTGACAACAACGGCAAGGTACCCGAGAGGACATCACCAGCTTGCTGCACACCATCT
 ATGAGGTGGTGGACTCCTCTGTCAACCACTCCCAACATCCAGCAAGATGCTGCGGGTAAAGCTCACCGT
 GGCCCCGATGGCAGCCAGAGCAAGAGGAGCGTCTTGTCAATCAGGCTGACCTGCAGAGCGCAAGGCC
 CGAGCAGAGACCAAGCCCACTGAGGACCTGCGGAGCTGGGAGAAGAAGCAGCGAGCCCGCTCAGGTTCC
 AGGGTGACAGCCGCTGGAGCAGTCTGGTGTACCACATTGCGTAGATGAGAATCGAGAGGAGAAA
 CCACTACTTAGATCTCGCCGGGATAGAAAACCTACACGTCCCAATTTGGGCTGGCTCCCCTTCCGTGGCC
 CAGAAGTCAGAAGTGCACCCCGCACCTCCAATCCCACTCGATCTCGCTCCCATGAGCCGGAAGCCATCC
 ACATCCCACACCGAAAGCCCAAGGCGTGGACCCGGCCTCCTTCCACTTCTTGACACCCCAATCGCAA
 GGTCTCAGAGTCCAGCAACGGCTCCGGGGCACCCAGGACGGGAGCAAGCACTTTGTGAGGTCCCCAAG
 GCCCAGGGCAAGAGTGTGGGTGTGGGCCACGTGGCCAGAGGGGCAAGAAACAAGCCCCCTCTGGGACCCG
 CCATCCCTGCGGTGTCCCCCTCCGCCACCTGGTGGCCAGCCCGGCCCTCCTCCCCTAGCCCCCT
 CGGGCACAAGAAGCACAAAGCACCGAGCCAAGGAGAGCCAGCAGGGCTGCCGGGGCCTGCAGGCACCATG
 GCCTCAGGTGGCCCTGTCTGGGCGGGAGCACCTGCGGGAGCTGCCCGCCTTGGTGGTGTATGAGAGCC
 AGGCCGGGACCGGTCAGAGACATGAGCACCACCACCACATGAACATCACCACCATTACCACCACTT
 CTACCAGACA

ACGCGTACGCGGGCCGCTCGAGCAGAAACTCATCTCAGAAGAGGATCTGGCAGCAATGATATCCTGGATT
 ACAAGGATGACGACGATAAGGTTTAA

Protein Sequence:

>RC208553 representing NM_033119
 Red=Cloning site Green=Tags(s)

MGKLHSPAAVCKRRESPEGDSFAVSAAWARKGIEEWIGRQRCPPGVSGPRQLRLAGTIGRSTRELVGDV
 LRDTLSEEEEDDFRLEVALPPEKTDGLGSGDEKKMERSVSEPCPGSKKQLKFEELQCDVSMEEDSRQEWTF
 TLYDFDNNQKVTREDITSLHTIYEVVDSVNHSPSSKMLRVKLTVPDGSQSKRSVLVNQADLQSARP
 RAETKPTEDLRSWEKKQRAPLRFQGDSRLEQSGCYHHCVDENIERRNHYLDLAGIENYTSQFGPGSPVA
 QKSELPPRTSNPTRSRSEPEAIHIPHRKPQGVDPASFHFLDTPIAKVSELQQRLRGTQDGSKHFVRSKP
 AQKSVGVGHVARGARNKPLGPAIPAVSPSAHLAASPALLPSLAPLGHKKHKHRAKESQQGCRGLQAPL
 ASGGPVLGREHLRELPAVVYVESQAGQPVRHEHHHHHEHHHHYHHFYQT

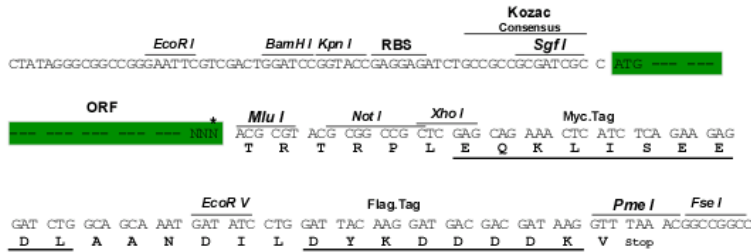
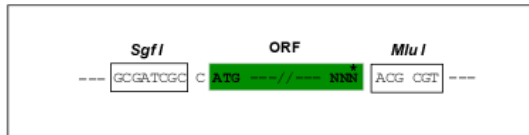
TRTRPLEQ**KL**ISEEDLAANDILDYKDDDDKV

Restriction Sites:

Sgfl-MluI

Cloning Scheme:

Cloning sites used for ORF Shuttling:



* The last codon before the Stop codon of the ORF

ACCN: NM_033119

ORF Size: 1410 bp

OTI Disclaimer: The molecular sequence of this clone aligns with the gene accession number as a point of reference only. However, individual transcript sequences of the same gene can differ through naturally occurring variations (e.g. polymorphisms), each with its own valid existence. This clone is substantially in agreement with the reference, but a complete review of all prevailing variants is recommended prior to use. [More info](#)

OTI Annotation: This clone was engineered to express the complete ORF with an expression tag. Expression varies depending on the nature of the gene.

Components: The ORF clone is ion-exchange column purified and shipped in a 2D barcoded Matrix tube containing 10ug of transfection-ready, dried plasmid DNA (reconstitute with 100 ul of water).

Reconstitution Method:

1. Centrifuge at 5,000xg for 5min.
2. Carefully open the tube and add 100ul of sterile water to dissolve the DNA.
3. Close the tube and incubate for 10 minutes at room temperature.
4. Briefly vortex the tube and then do a quick spin (less than 5000xg) to concentrate the liquid at the bottom.
5. Store the suspended plasmid at -20°C. The DNA is stable for at least one year from date of shipping when stored at -20°C.

RefSeq: [NM_033119.5](#)

RefSeq Size: 2604 bp

RefSeq ORF: 1413 bp

Locus ID: 85407

UniProt ID: [Q969G9](#)

Cytogenetics: 16q12.1

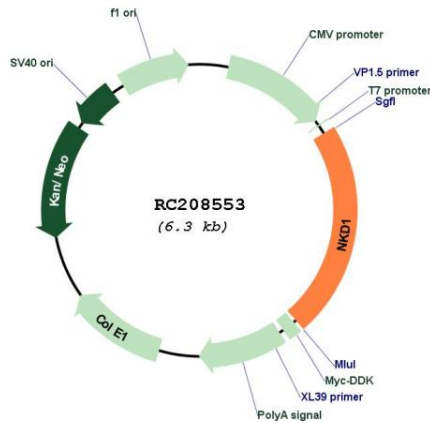
Protein Families: Druggable Genome

Protein Pathways: Wnt signaling pathway

MW: 52.1 kDa

Gene Summary: In the mouse, Nkd is a Dishevelled (see DVL1; MIM 601365)-binding protein that functions as a negative regulator of the Wnt (see WNT1; MIM 164820)-beta-catenin (see MIM 116806)-Tcf (see MIM 602272) signaling pathway.[supplied by OMIM, Jun 2003]

Product images:



Circular map for RC208553