

## Product datasheet for **RC208548**

### PPP1R16A (NM\_032902) Human Tagged ORF Clone

#### Product data:

Product Type:	Expression Plasmids
Product Name:	PPP1R16A (NM_032902) Human Tagged ORF Clone
Tag:	Myc-DDK
Symbol:	PPP1R16A
Synonyms:	MYPT3
Mammalian Cell Selection:	Neomycin
Vector:	pCMV6-Entry (PS100001)
E. coli Selection:	Kanamycin (25 ug/mL)



[View online »](#)

**ORF Nucleotide Sequence:**

>RC208548 representing NM\_032902  
 Red=Cloning site Blue=ORF Green=Tags(s)

TTTTGTAATACGACTCACTATAGGGCGGCCGGAATTCGTCGACTGGATCCGGTACCGAGGAGATCTGCC  
 GCC**CGCATCGCC**

ATGGCCGAGCACCTGGAGCTGCTGGCAGAGATGCCCATGGTGGCAGGATGAGCACACAGGAGCGGCTGA  
 AGCATGCCAGAAAGCGGGCGGCCAGCAGGTGAAGATGTGGGCCAGGCTGAGAAGGAGGCCAGGGCAA  
 GAAGGGTCTGGGAGCGTCCCCGGAAGGAGGCAGCCAGCCAAGGGCTCCTGAAGCAGGTCTCTCCCT  
 CCCAGTGTTCCTTCTGGAGGCCGCTGCCGAAATGACCTGGAAGAAGTCCGCCAGTTCCTTGGGAGTG  
 GGGTCAGCCCTGACTTGGCCAACGAGGACGGCCTGACGGCCCTGCACCAGTGCTGCATTGATGATTTCCG  
 AGAGATGGTGCAGCAGCTCCTGGAGGCTGGGGCCAACATCAATGCCTGTGACAGTGAGTGTGGACGCCCT  
 CTGCATGCTGCGGCCACCTGCGGCCACCTGCACCTGGTGGAGTGCTCATCGCCAGTGGCCCAATCTCC  
 TGGCGGTCAACACCGACGGGAACATGCCCTATGACCTGTGTGATGATGAGCAGACGCTGGACTGCCTGGA  
 GACTGCCATGGCCGACCTGGCATCACCCAGGACAGCATCGAGGCCGCCGGGCCGTGCCAGAACTGCGC  
 ATGCTGGACGACATCCGGAGCCGGCTGCAGGCCGGGCAGACCTCCATGCCCCCTGGACCACGGGGCCA  
 CGCTGCTGCACGTGCGAGCCGCCAACGGGTTACGCGAGGCGGCTGCCCTGCTGCTGGAACACCGAGCCAG  
 CCTGAGCGCTAAGGACCAAGACGGCTGGGAGCCGCTGCACGCCGCGGCTACTGGGGCCAGGTGCCCTG  
 GTGGAGCTGCTCGTGGCGCACGGGGCCGACCTGAACGCAAAGTCCCTGATGGACGAGACGCCCTTGATG  
 TGTGCGGGGACGAGGAGGTGCGGGCCAAGTGTGGAGCTGAAGCACAAGCACGACGCCCTCTGCGCGC  
 CCAGAGCCGCCAGCGTCTTGTGCGCCGCGCACCTCCAGCGCCGGCAGCCGCGGAAGTGGTGAGG  
 CGGGTGAACCTAACCCAGCGCACCGACCTGTACCGCAAGCAGCACGCCAGGAGGCCATCGTGTGGCAAC  
 AGCCGCGCCACCAGCCGGAGCCGCCGAGGACAACGATGACCGCCAGACAGGCGCAGAGCTCAGGCC  
 GCCGCCCCGGAGGAGGACAACCCGAAGTGGTACAGGCCGACAATGGCCGAGTAGGGGGCTCCCCAGTG  
 CGGCATCTATACTCCAAGCGACTAGACCGAGTGTCTCCTACCAGCTGAGCCCCCTGGACAGCACCCCC  
 CCCACACCCTGGTCCACGACAAGGCCACCACACCCTGGCTGACCTGAAGCGCCAGCGAGCTGCTGCCAA  
 GCTGCAGCGACCCACCTGAGGGGCCGAGAGCCCTGAGACAGCTGAGCCTGGCCTGCCTGGTGACAGG  
 GTGACCCCCAGCCTGACTGTGGCTTACGGGCAGGCGGGACCCACCCCTGCTCAAGCTCACAGCCCGG  
 CGGTGGAGGCTCCCGTGGAGAGGAGGCCGTGCTGCCTGCTCATG

**ACGCGT**ACGCGGCCGCTCGAGCAGAAACTCATCTCAGAAGAGGATCTGGCAGCAAATGATATCTGGATT  
 ACAAGGATGACGACGATAAGGTTTAA

**Protein Sequence:**

>RC208548 representing NM\_032902  
 Red=Cloning site Green=Tags(s)

MAEHELLEAEMPMVGRMSTQERLKHAKRRAQVQKMWQAQAEKEAQGKKGPERPRKEAASQGLLKQVLF  
 PSVLLLEAAARNDL EEVRQFLGSGVSPDL ANEDGLTALHQCCIDDFREMVQQLLEAGANINACDSECWTP  
 LHAAATCGHLHLVELLIASGANLLAVNTDGNMPYDLCDDEQTLDCLETAMADRGITQDSIEAARAVPELR  
 MLDDIRSRLQAGADLHAPLDHGATLLHVAANGFSEAAALLLEHRASLSAKDQDGWEPLHAAAYWQVPL  
 VELLVAHGADLNAKSLMDETPLDVCGDEEVRAKLELKHKHDALLRAQSRQRSLRRRTSSAGSRGKVVR  
 RVSLTQRDLYRQHAQEAIWVQQPPPTSPEPPEDNDRQTGAELRPPPEEDNPEVVRPHNGRVGGSPV  
 RHLYSKRLDRSVSYQLSPLDSTTPHTLVHDKAHTLADLKRQRAAAKLQRPPEGPESPETAEPGLPGDT  
 VTPQPCGFRAGGDPPLKLTAPAVEAPVERRPCLLM

**TR**TRPLEQKLISEEDLAANDILDYKDDDDKV

**Chromatograms:**

[https://cdn.origene.com/chromatograms/mg4684\\_a05.zip](https://cdn.origene.com/chromatograms/mg4684_a05.zip)

**Restriction Sites:**

Sgfl-MluI



UniProt ID: [Q96I34](#)

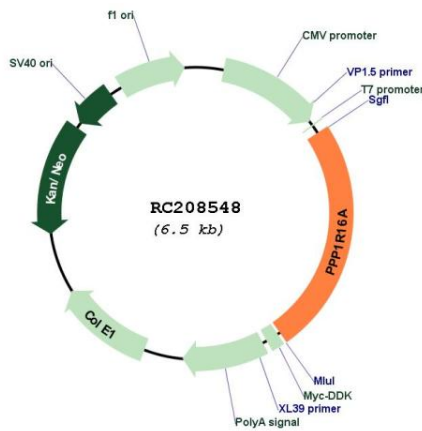
Cytogenetics: 8q24.3

Domains: ANK

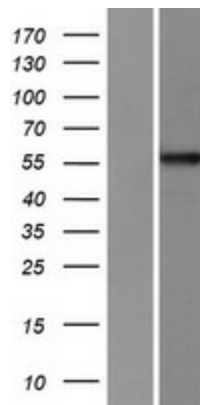
MW: 57.6 kDa

**Gene Summary:** Myosin light chain kinase and phosphatase (MLCP) complexes control the phosphorylation states of regulatory myosin light chains, which is crucial for muscle and intracellular movement. MLCPs typically contain a catalytic protein phosphatase 1 (PP1c) subunit, a myosin phosphatase targeting (MYPT) subunit, and another smaller subunit. The protein encoded by this gene represents an MYPT subunit, which is responsible for directing PP1c to its intended targets. However, while the phosphorylation of other MYPT members results in PP1c inactivation, phosphorylation of the encoded protein by protein kinase A results in PP1c activation. [provided by RefSeq, Jan 2020]

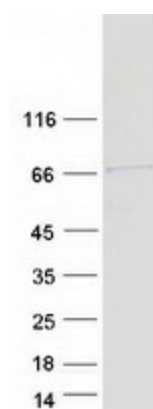
**Product images:**



Circular map for RC208548



Western blot validation of overexpression lysate (Cat# [LY409864]) using anti-DDK antibody (Cat# [TA50011-100]). Left: Cell lysates from untransfected HEK293T cells; Right: Cell lysates from HEK293T cells transfected with RC208548 using transfection reagent MegaTran 2.0 (Cat# [TT210002]).



Coomassie blue staining of purified PPP1R16A protein (Cat# [TP308548]). The protein was produced from HEK293T cells transfected with PPP1R16A cDNA clone (Cat# RC208548) using MegaTran 2.0 (Cat# [TT210002]).