

## Product datasheet for **RC208529**

### **RAB5B (NM\_002868) Human Tagged ORF Clone**

#### Product data:

**Product Type:** Expression Plasmids  
**Product Name:** RAB5B (NM\_002868) Human Tagged ORF Clone  
**Tag:** Myc-DDK  
**Symbol:** RAB5B  
**Mammalian Cell Selection:** Neomycin  
**Vector:** pCMV6-Entry (PS100001)  
**E. coli Selection:** Kanamycin (25 ug/mL)  
**ORF Nucleotide Sequence:** >RC208529 representing NM\_002868  
 Red=Cloning site Blue=ORF Green=Tags(s)

TTTTGTAATACGACTCACTATAGGGCGGCCGGAATTCGTCGACTGGATCCGGTACCGAGGAGATCTGCC  
 GCC**CGATCGCC**

ATGACTAGCAGAAGCACAGCTAGGCCAATGGGCAACCCAGGCCAGCAAAATTTGCCAGTTCAAATTGG  
 TCCTGCTGGGAGAATCTGCAGTGGGAAAGTCAAGCCTGGTATTACGTTTTGTCAAAGGCCAGTTCATGA  
 GTACCAGGAGAGCACCATTGGAGCGCCTTCCTCACCCAGTCCGTTTGTCTAGATGACACAACAGTGAAG  
 TTTGAGATCTGGGACACAGCTGGGACAGGAGCGATATCACAGCTTAGCCCCATGTACTACAGGGGTGCC  
 AAGCTGCAATCGTGGTTTACGACATTACTAATCAGGAAACCTTTGCCCGAGCAAAGACATGGGTGAAGGA  
 ACTACAGCGACAGGCCAGTCTAGCATCGTTATTGCCCTGGCAGGGAACAAGCTGACCTGGCCAACAAA  
 CGTATGGTGGAGTATGAAGAGGCCAGGCATATGCAGATGACAACAGCTTATTGTTTCATGGAGACTTCAG  
 CCAAGACAGCTATGAACGTGAATGATCTCTTCTGGCAATAGCTAAGAAGTTGCCAAAGAGTGAACCCCA  
 GAATCTGGGAGGTGCAGCAGGCCGAAGCCGGGTGTGGATCTCCATGAACAGTCCAGCAGAAACAAGAGC  
 CAGTGTGTAGCAAC

**ACGCGT**ACGCGGCCGCTCGAGCAGAAACTCATCTCAGAAGAGGATCTGGCAGCAATGATATCTGGATT  
 ACAAGGATGACGACGATAAGGTTTAA

**Protein Sequence:** >RC208529 representing NM\_002868  
 Red=Cloning site Green=Tags(s)

MTSRSTARPNQPQASKICQFKLVLLGESAVGKSSLVLRVKGQFHEYQESTIGAAFLTQSVCLDDTTVK  
 FEIWDTAGQERYHSLAPMYRGAQAAIVVYDITNQETFARAKTWVKELQRQASPSIVIALAGNKADLANK  
 RMVEYEEAQAYADDNSLLFMETSAKTAMNVNDLFLAIKPKSEPQNLGGAAGRSRGVDLHEQSQQNKS  
 QCCSN

**TR**TRPLEQKLISEEDLAANDILDYKDDDDKV

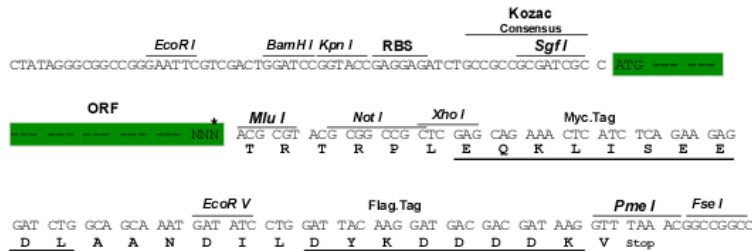
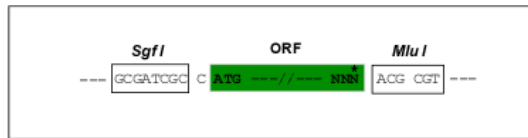


Chromatograms: [https://cdn.origene.com/chromatograms/ja1468\\_e07.zip](https://cdn.origene.com/chromatograms/ja1468_e07.zip)

Restriction Sites: SgfI-MluI

Cloning Scheme:

Cloning sites used for ORF Shuttling:



\* The last codon before the Stop codon of the ORF

ACCN: NM\_002868

ORF Size: 645 bp

OTI Disclaimer: The molecular sequence of this clone aligns with the gene accession number as a point of reference only. However, individual transcript sequences of the same gene can differ through naturally occurring variations (e.g. polymorphisms), each with its own valid existence. This clone is substantially in agreement with the reference, but a complete review of all prevailing variants is recommended prior to use. [More info](#)

OTI Annotation: This clone was engineered to express the complete ORF with an expression tag. Expression varies depending on the nature of the gene.

Components: The ORF clone is ion-exchange column purified and shipped in a 2D barcoded Matrix tube containing 10ug of transfection-ready, dried plasmid DNA (reconstitute with 100 ul of water).

Reconstitution Method:

1. Centrifuge at 5,000xg for 5min.
2. Carefully open the tube and add 100ul of sterile water to dissolve the DNA.
3. Close the tube and incubate for 10 minutes at room temperature.
4. Briefly vortex the tube and then do a quick spin (less than 5000xg) to concentrate the liquid at the bottom.
5. Store the suspended plasmid at -20°C. The DNA is stable for at least one year from date of shipping when stored at -20°C.

RefSeq: [NM\\_002868.4](#)

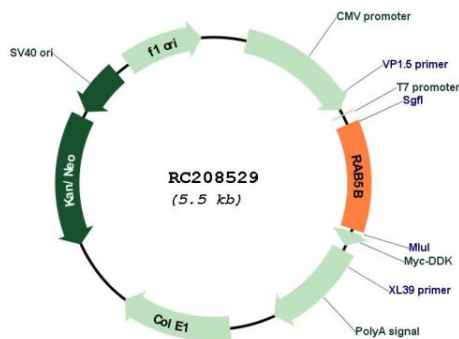
RefSeq Size: 3336 bp

RefSeq ORF: 648 bp

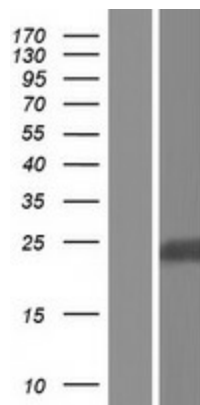
Locus ID: 5869

**UniProt ID:** [P61020](#)  
**Cytogenetics:** 12q13.2  
**Domains:** ras, RAN, RAS, RHO, RAB  
**Protein Families:** Druggable Genome  
**Protein Pathways:** Endocytosis  
**MW:** 23.5 kDa  
**Gene Summary:** Protein transport. Probably involved in vesicular traffic (By similarity).[UniProtKB/Swiss-Prot Function]

### Product images:



Circular map for RC208529



Western blot validation of overexpression lysate (Cat# [LY419061]) using anti-DDK antibody (Cat# [TA50011-100]). Left: Cell lysates from untransfected HEK293T cells; Right: Cell lysates from HEK293T cells transfected with RC208529 using transfection reagent MegaTran 2.0 (Cat# [TT210002]).