

Product datasheet for RC208527

TIMELESS (NM_003920) Human Tagged ORF Clone

Product data:

Product Type:	Expression Plasmids
Product Name:	TIMELESS (NM_003920) Human Tagged ORF Clone
Tag:	Myc-DDK
Symbol:	TIMELESS
Synonyms:	hTIM; TIM; TIM1
Vector:	pCMV6-Entry (PS100001)
E. coli Selection:	Kanamycin (25 ug/mL)
Cell Selection:	Neomycin
ORF Nucleotide Sequence:	>RC208527 ORF sequence Red=Cloning site Blue=ORF Green=Tags(s)

TTTTGTAATACGACTCACTATAGGGCGCCGGAATTCGTCGACTGGATCCGGTACCGAGGAGATCTGCC
GCC**CGATCGCC**

ATGGACTGCACATGATGAACTGTGAACTTCTAGCCACATGTAGTGCCCTTGGTACTTGGAGGGAGACA
CTTACCATAAGGAACCAGATTGCTTAGAGAGCGTGAAGGATCTCATCCGCTATTTGAGGCATGAGGATGA
GACACGAGATGTGCGGCAGCAGCTGGGGCAGCCAGATCCTACAGAGCGACCTTCTGCCATCCTCACC
CAGCACCACCAGGACAAGCCTCTTTTGATGCTGTTATCAGACTGATGGTGAACCTTGACACAACCCAGCCT
TGCTCTGTTTTGGCAATCTGCCTAAGGAGCCAGCTTTCGGCACCATTTTTGCAGGTGCTAACTTATTT
GCAGGCCCTACAAAGAGGCCTTTGCCAGTGAGAAGGCTTTTGGAGTCTCAGTGAAACCTTGATGAGCTG
CTGCAGCTGGGCTGGGAGGAACGGCAGGAGGAAGACAACCTTGCTGATTGAACGGATCCTACTGCTGGTCA
GAAATATTTCTCCATGTCCAGCTGACCTTGATCAGGAGAAGAAGATTGATGATGACGCCAGTGCCCATGA
CCAGCTCCTCTGGGCGATTACCTCAGCGGCCTGGATGACCTGCTCCTTTCTGGCCAGCTCGTCTGCT
GAGGAGCAATGGAGCCTACATGTGCTAGAGATTGCTCCCTTATGTTTCGTGACCAGAACCCCGAGCAGC
TGGCGGGAGTAGGGCAGGAGCCTTAGCTCAGGAGCGGAGTGCAGATTTGCAGAACTGGAGGTGTTGCG
CCAGCGAGAGATGGCAGAAAAGAAGACTCGAGCCCTCCAGCGAGGCAACAGGCATTCTCGATTTGGGGGC
TCCTATATTGTCCAGGGTTGAAATCCATTGGGGAGAGGGACCTCATCTTTCACAAAGGCCTTCACAACC
TACGAACTACAGTTCAGATTTGGGAAAGCAGCCGAAAAAGGTGCCTAAACGTGCGCCAGGCCGCCGAGA
GCTGTCCATTAGCGCCGTTCTGCCCTCAATGTGAGGCTCTTCTCAGAGACTTCTGCTCTGAGTTCCTG
GAGAACTGTTACAACCGGCTCATGGGATCAGTAAAGGATCACCTGCTTCGGGAGAAAGCTCAGCAGCATG
ATGAGACCTATTATATGTGGCCTTGGCTTCTCATGGCCTTCAACCGAGCTGCCTCCTCCGGCCAGG
CCTGGTTTCTGAGACCCTCAGTGTCCGTACCTTCACTTCATTGAGCAGAACCTCACCACTACTATGAG
ATGATGCTGACTGACCGCAAGGAAGCTGCCTCCTGGGCACGCCGATGCATTGGCTCTGAAGGCCTATC
AGGAGCTGCTGGCAACAGTGAATGAGATGGACATATCTCCAGATGAGGCTGTGAGGGAGAGCAGCCGCAT
CATCAAGAACAATATTTCTATGTGATGGAGTACCGAGAATTTCTGGCACTTTTTCGAAAGTTTGAT
GAGAGATGCCAGCCCGCTTTTCTTCGTGACCTGGTGGAGACCACCCACCTTCTCTCAAATGTTGG



[View online >](#)

AGCGATTCTGTCGGAGCCGTGGGAACCTGGTGGTGCAGAACAACAAAAGAAGAGAAGGAAGAAGAAGAA
GAAGGTCCTAGACCAGGCCATTGTTTCTGGTAATGTCCCATCTAGCCCAGAAGAAGTGGAGGCTGTGTGG
CCAGCCCTGGCTGAGCAGCTACAGTGTGTGCCAGAATTCTGAGCTCAGCATGGACTCCGTGGTCCCT
TTGATGCGGCCTCAGAGGTGCCAGTGGAGGAGCAGCGGGCAGAAGCTATGGTACGGATCCAAGACTGTCT
CCTGGCTGGCCAGGCCACAGGCCCTGACTCTCTGAGGTCTGCTCGGGAGGTGTGGCCTGAAGGAGAT
GTGTTTGGCTCTCAAGACATTTCTCCAGAGGAAGAGATCCAGTTGCTGAAACAAATCCTCTCTGCTCCAC
TTCCCCGGCAGCAGGGCCAGAGGAACGTGGGGCAGAGGAAGAAGAAGAGGAGGAGGAGGAAGAGGA
GGAGTTGCAAGTGGTCCAGGTGTCGGAGAAAGAAATTTAATTTTCTGGACTACCTGAAACGCTTTGCATGT
TCAACTGTCGTTTCGAGCCTATGTGCTGCTACTAAGGAGCTACCAGCAGAATAGTGCCACACTAACCATT
GCATTGTGAAGATGCTGCACCGCTGGCCCATGACCTCAAAATGGAAGCCCTACTTTTTCTAGCTGTGAGT
CTTCTGCCTCTTCAATCGTCTGCTTAGTGACCCTGCTGCTGGAGCCTACAAAGAGCTAGTGACTTTTGCC
AAATACATCCTGGGCAAATTTTTGCACTGGCTGCAGTCAACAAAAAGCCTTTGTGGAGCTGTTGTTCT
GGAAGAACACAGCTGTGGTTCGAGAGATGACTGAGGGCTATGGCTCCCTGGATGACAGGTCTTCCAGTCG
CAGAGCACCTACATGGAGCCCCGAAGAAGAGGCTCATCTTCGGGAGCTGTACCTCGCCAATAAGGACGTG
GAAGGGCAGGATGTGGTGAAGCCATCTTGGCCACCTGAATACTGTTCCCTCGAACCGCAAGCAGATCA
TCACCATCTGGTACAGATGGGACTGGCTGACAGTGTCAAGGACTTCAAAGGAAAGGAACCCATATTGT
ACTGTGGACGGGGATCAGGAGTTGGAGCTGCAGCGGCTTTTTGAGGAATTCGGGACTCAGATGATGTC
CTGGGTCAATATGAAGAATATCACAGCCAAACGCTCACGGGCCGAATAGTGGATAAACTCTTGGCTC
TGGGGCTGGTGGCTGAGCGGGGAGCTGTACAAGAACGGCAGAAAAAGTTGGCATCCTCCATCTTGCC
AAATGGAGCGGAGTCCCTGAAAGATTTTTGCCAGGAAGATCTGGAAGAAGAGGAAAACCTGCCTGAGGAA
GACAGCGAAGAGGAAGAAGAAGGGGGCTCAGAAGCAGAACAAGTCCAGGGTAGCTTAGTCCTTTCAAATG
AAAACCTTGGTCAAAGCCTGCATCAGGAAGGCTTTTCTATCCTGCTCCTATGGCTCCAGAAGTGCCTGAT
CCGAGCAGCTGATGATCGGGAAGAGGATGGCTGCTCCAGGCCGTTCCATTGGTGCCACTCACAGAGGAA
AATGAGGAAGCCATGAAAACGAACAGTTTCAGCAGCTGTTGCGCAAGCTAGGGGTTTCGGCCCCCTGCCT
CTGGGCAGGAAACCTTCTGGCGAATTCAGCAGCTGAGTCCTACCCAGCTCCGGAGGGCAGCAGCTTC
TTTGAGTCAACCAGAGGAGGAACAGAAGCTGCAGCCAGAGCTGCAGCCTAAAGTCCCTGGAGAGCAAGGC
TCTGATGAGGAGCACTGTAAAGAGCACCGAGCACAAGCCCTGAGGGCCCTCTTGCTAGCCACAAGAAGA
AAGCGGGCTGGCATCCCAGAGGAGGAAGACGCTGTTGGTAAAGAGCCGCTGAAGGCAGCACCCAAGAA
ACGACAATTGCTGGACAGCGACGAGGAACAGGAAGAAGATGAGGGCAGGAACAGAGCACCCAGAGTTGGGA
GCTCCAGGAATCCAAAAGAAGAAACGATACCAGATTGAGGATGATGAGGATGAC

ACGCGTACGCGGCCGCTCGAGCAGAACTCATCTCAGAAGAGGATCTGGCAGCAAATGATATCCTGGATT
ACAAGGATGACGACGATAAGGTTTAA

Protein Sequence: >RC208527 protein sequence
 Red=Cloning site Green=Tags(s)

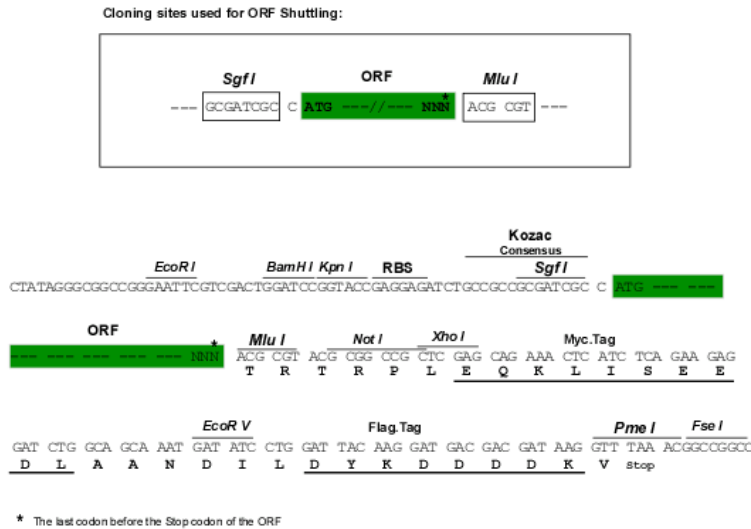
```
MDLHMMNCELLATCSALGYLEGDTYHKEPDCLESVKDLIRYL RHEDETRDVRQQLGAAQILQSDLLPILT
QHHQDKPLFDAVIRLMVNLTQPALLCFGNLPKEPSFRHHFLQVLTYLQAYKEAFASEKAFGVLSETLYEL
LQLGWEERQEEDNLLIERILLVRNILHVPADLDQEKKIDDDASAHQQLLWAIHLSGLDDLLFLASSSA
EEQWSLHVLEIVSLMFRDQNPQLAGVGGRLAQERSADFAELVLRQREMAEKKTRALQRGNRHSRFGG
SYIVQGLKSIGERDLIFHKGLHNL RNYSSDLGKQPKKVPKRRQAARELSIQRRSALNVRLFLRDFCSEFL
ENCYNRLMGSVKDHLREKAQQHDETYMWAFFMAFNRAASFRPGLVSETLSVRTFHFIEQNLNYYE
MMLTDRKEAASWARRMHLAL KAYQELLATVNEMDISPDEAVRESSRIKNNIFYVMEYRELFALFRKFD
ERCQPRSFLRDLVETTHLFLKMLERFCRSRGNLVVQNKQKRRRKKKKVLDQAI VSGNVPSSPEEVEAVW
PALAEQLQCCAQNSELSMDSVVPFDAASEVPVEEQRAEAMVRIQDCLLAGQAPQALTLRSAREVWPEGD
VFGSQDISPEEEIQLLKQILSAPLPRQQPEERGAEEEEEEEEEEEEELQVVQVSEKFNFLDYLRKFC
STVVRAYVLLRSYQNSAHTNHCIVKMLHRLAHDLMKMEALLFQLSVFCLFNRLSDPAAGAYKELVTF
KYILGKFFALAAVNQAFVELLFWKNTAVVREMTEGYGSLDDRSSRRAPTWSPEEEAHLRELYLANKDV
EGQDVVEAILAHLNTPRTRKQIIHHLVQMG LADSVKDFQRKGTHIVLWTGDQELQLRLEEFDRSDDV
LGHIMKNITAKRSRARI VDKLLALGLVAERRELYKKRQKKLASSILPNGAESLKDFCQEDLEEEENLPEE
DSEEEEEGGSEAEQVQGSVL SNENLQSLHQEGFSILLWLQNLIRAADDREEDGCSQAVPLVPLTEE
NEEAMENEQFQQLLRKLGVRPPASGQETFWRIPAKLSPTQLRRAAASLSQPEEQKLQPELQPKVPGEQG
SDEEHCKEHRAQALRALLAHKKKAGLASPEEEDAVGKEPLKAAPKKRQLLDSDEEQEEDGRNRAPELG
APGIQKKKRYQIEDDED
```

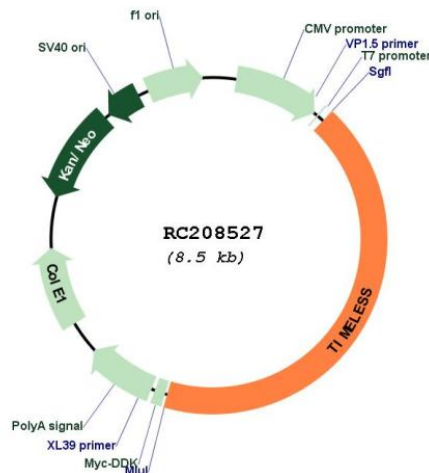
TRTRPLEQKLISEEDLAANDILDYKDDDDKV

Chromatograms: https://cdn.origene.com/chromatograms/mk6262_e09.zip

Restriction Sites: SgfI-MluI

Cloning Scheme:



Plasmid Map:


ACCN: NM_003920

ORF Size: 3624 bp

OTI Disclaimer: The molecular sequence of this clone aligns with the gene accession number as a point of reference only. However, individual transcript sequences of the same gene can differ through naturally occurring variations (e.g. polymorphisms), each with its own valid existence. This clone is substantially in agreement with the reference, but a complete review of all prevailing variants is recommended prior to use. [More info](#)

OTI Annotation: This clone was engineered to express the complete ORF with an expression tag. Expression varies depending on the nature of the gene.

Components: The ORF clone is ion-exchange column purified and shipped in a 2D barcoded Matrix tube containing 10ug of transfection-ready, dried plasmid DNA (reconstitute with 100 ul of water).

Reconstitution Method:

1. Centrifuge at 5,000xg for 5min.
2. Carefully open the tube and add 100ul of sterile water to dissolve the DNA.
3. Close the tube and incubate for 10 minutes at room temperature.
4. Briefly vortex the tube and then do a quick spin (less than 5000xg) to concentrate the liquid at the bottom.
5. Store the suspended plasmid at -20°C. The DNA is stable for at least one year from date of shipping when stored at -20°C.

RefSeq: [NM_003920.5](#)

RefSeq Size: 5154 bp

RefSeq ORF: 3627 bp

Locus ID: 8914

UniProt ID: [Q9UNS1](#)

Cytogenetics: 12q13.3

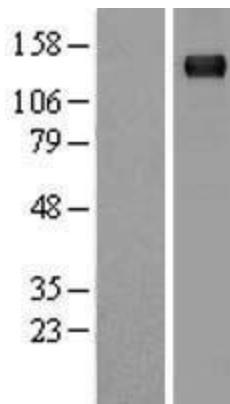
Domains: TIMELESS, TIMELESS_C

Protein Families: Transcription Factors

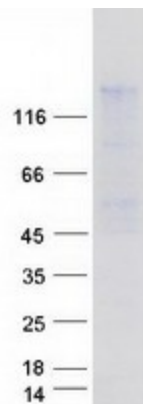
MW: 138.7 kDa

Gene Summary: The protein encoded by this gene is highly conserved and is involved in cell survival after damage or stress, increase in DNA polymerase epsilon activity, maintenance of telomere length, and epithelial cell morphogenesis. The encoded protein also plays a role in the circadian rhythm autoregulatory loop, interacting with the PERIOD genes (PER1, PER2, and PER3) and others to downregulate activation of PER1 by CLOCK/ARNTL. Changes in this gene or its expression may promote prostate cancer, lung cancer, breast cancer, and mental disorders. [provided by RefSeq, Feb 2014]

Product images:



Western blot validation of overexpression lysate (Cat# [LY418350]) using anti-DDK antibody (Cat# [TA50011-100]). Left: Cell lysates from untransfected HEK293T cells; Right: Cell lysates from HEK293T cells transfected with RC208527 using transfection reagent MegaTran 2.0 (Cat# [TT210002]).



Coomassie blue staining of purified TIMELESS protein (Cat# [TP308527]). The protein was produced from HEK293T cells transfected with TIMELESS cDNA clone (Cat# RC208527) using MegaTran 2.0 (Cat# [TT210002]).