

Product datasheet for **RC208526**

TCF12 (NM_207037) Human Tagged ORF Clone

Product data:

Product Type:	Expression Plasmids
Product Name:	TCF12 (NM_207037) Human Tagged ORF Clone
Tag:	Myc-DDK
Symbol:	TCF12
Synonyms:	bHLHb20; CRS3; HEB; HsT17266; HTF4; p64; TCF-12
Mammalian Cell Selection:	Neomycin
Vector:	pCMV6-Entry (PS100001)
E. coli Selection:	Kanamycin (25 ug/mL)



[View online »](#)

ORF Nucleotide Sequence:

>RC208526 ORF sequence
 Red=Cloning site Blue=ORF Green=Tags(s)

TTTTGTAATACGACTCACTATAGGGCGGCCGGGAATTCGTCGACTGGATCCGGTACCGAGGAGATCTGCC
 GCC**GCGATCGCC**

ATGAATCCCCAGCAACAACGCATGGCCGCTATAGGGACCGACAAGGAGCTGAGCGACCTACTGGACTTCA
 GTGCGATGTTTTCCACCTGTTAATAGTGGGAAAAGTAGACCAACTACACTGGGAAGCAGTCAGTTCAG
 TGGATCAGGTATTGATGAAAGAGGAGGTACAACATCTTGGGGAACAAGTGGTCAACCAAGTCCTTCTAT
 GATTCTACTAGAGGTTTTACAGACAGCCCTCATTACAGTGATCACTTGAATGACAGTCGATTAGGAGCCC
 ATGAAGGCTTGTCCCAACACCTTTTCATGAACTCAAATCTGATGGGAAAAACATCAGAGAGAGGCTCATT
 TTCCCTGTACAGCAGAGATACTGGATTACCAGGCTGTCAATCTAGTCTCCTGAGACAAGATCTGGGGCTT
 GGGAGCCCAGCACAGCTATCTTCTTCAGGAAAACCTGGGACAGCATACTATTCTTCTGCTACAAGTT
 CCAGGAGGAGACCACTCCATGACTCTGCAGCGCTTGATCCCTTGAAGCAAAAAAAGTCAGAAAGGTGCC
 TCCTGGTTTGCCCTCTTCTGTATATGCACCATCCCAAAATTCAGATGATTTCAACCGTGAATCTCCTAGT
 TATCCATCTCCTAAGCCCAACCAAGTATGTTCCGCTAGCACTTTCTTTATGCAAGATGGGACCCACAATT
 CTCTGACCTTTGGAGTTCATCAAATGGGATGAGCCAGCCTGGTTTTGGTGGAAATTCGGGGACCTCCAC
 TTCCACATGTCTCAATCCAGTAGTTATGGCAACCTTCATTACATGACCGCTTGAGTTATCCTCCACAC
 TCAGTTTCACCAACAGACATAAACACGAGTCTTCCACCAATGTCCAGCTTTCATCGCGGCAGTACCAGCA
 GTTCACCTTACGTTGCTGCCTCACACACTCCTCCCATCAATGGATCAGACAGCATTCTAGGAACCAGAGG
 GAATGCTGCTGGAAGCTCACAGACAGGTGATGCACTTGGAAAGGCTTTGGCATCTATTTATTCTCCTGAC
 CATACCAGCAGTAGTTTTCCGTCAAATCCATCAACACCAGTTGGATCACCTTACCTCTCACAGGTACCA
 GTCAGTGGCCAAGACCTGGAGGGCAAGCACCTTCATCCCAAGCTATGAAAACCTCACTCCCTGAA
 AAATCGAGTTGAGCAGCAACTTCACGAGCATTGCAAGATGCAATGTCCTTCTTAAAGGATGCTGTGAG
 CAGTCTCGAATGGAGGATCGTTTAGACAGACTGGATGATGCAATCCATGTGCTGCGGAACCATGCTGTGG
 GACCTTCCACCAGTTTGCTGCTGGTACAGTGATATACATAGTTTATTGGGACCATCCCATAATGCACC
 AATTGGAAGCCTCAATTCAAACTATGGAGGATCAAGCCTTGTGCAAGCAGTCGATCAGCTTCAATGGTT
 GGAACATCAGGGAAGACTCTGTCAGTCTCAATGGCAATCATTAGTCTGTCTAGTACAGTCACTACTT
 CAAGCACAGACCTGAACCATAAAACACAAGAAAATTATAGAGGTGGCTTGCAAAGTCAGTCTGGAAGTGT
 TGTTACAACAGAAATCAAGACTGAAAACAAAGAAAAGGATGAAAACCTTCATGAACCTCCTTCATCAGAT
 GACATGAAGTCAGATGATGAATCCTCCAAAAAGATATCAAGGTTTCATCTAGAGGCAGAACCAAGCAGTA
 CTAAATGAAGATGAGGATTTGAACCCTGAACAGAAGATAGAAAAGGAGAAGGAGAGGCGGATGGCTAACAA
 TGCCAGAGAACGCTTACGCGTGCGGGATATTAATGAAGCATTCAAAGAGCTTGGCCGAATGTGTCAGCTT
 CACTTGAAGAGTGAAAAACCCCAAAACAAAACCTTATTCTTTCATCAAGCCGTGGCAGTCATCCTTAGTC
 TAGAACAGCAAGTCAGAGAGAGGAACCTTAACCCCAAAGCAGCCTGCCTTAAGAGAAGGGGAAGAAAA
 AGTTTCTGCCGTATCGGCAGAGCCGCCAACCACTGCCAGGAACCCATCCTGGGCTTAGTGAAACTACC
 AACCTATGGGTCATATG

AGCGGACCGACGCGTACGCGGCCGCTCGAGCAGAAAACCTATCTCAGAAGAGGATCTGGCAGCAAATGATATCC
 TGGATTACAAGGATGACGACGATAAGGTTTAA

Protein Sequence: >RC208526 protein sequence
 Red=Cloning site Green=Tags(s)

MNPQQQRMAAIGTDKELSDLLDFSAMFSPVNSGKTRPTTLGSSQFSGSGIDERGGTTSWGTSQGPSPSY
 DSSRGFTDSPHYSDHLNDSRLGAHEGLSPTPFMNSNLMGKTSEKGSFSLYSRDTGLPGCQSSLLRQDLGL
 GSPAQLSSSGKPGTAYYSFATSSRRRPLHDSAALDPLQAKKVRKVPPGLPSSVYAPSPNSDDFNRES
 YPSPKPPTSMFASTFFMQDGTNNSDLWSSNGMSQPGFGGILGTSTSHMSQSSSYGNLHSHDRLSYPPH
 SVSPTDINTSLPPMSSFHRGSTSSPYVAASHTPPINGSDSILGTRGNAAGSSQTGDALGKALASIYSPD
 HTSSSFPSTVPVGSPLTGTSTQWPRPGQAPSSPYENSLHSLKNRVEQQLHEHLQDAMSFVKDVC
 QSRMEDRLDRLDDAIHVLNRHAVGPSTSLPAGHSDIHSLLGPSHNAIGSLNSNYGGSSLVASSRSAS
 MVGTHREDSVSLNGNHSVLSSTVTTSTDLNHKTQENYRGGLSQSGTVVTEIKTENKEKDENLHEPPSSD
 DMKSDDESSQDKIKVSSRGRSTSTNEDEDLNPEQKIEREKERRMANNARERLRVRDINEAFKELGRMCQ
 LHLKSEKPTKLLILHQAVALVILSLEQQVRERNLNPKAACLRREEEKVSAVSAEPPTTLPGTHPGLSETT
 NPMGHM

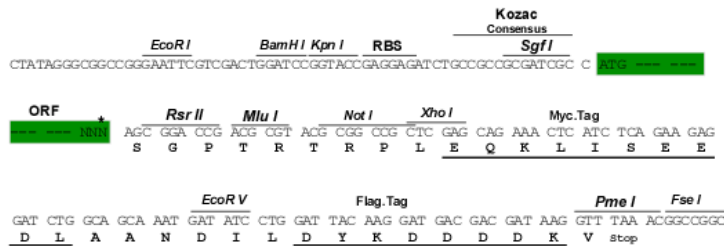
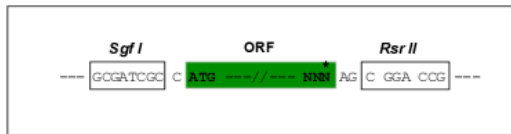
SGPTRRTRPLEQKLISEEDLAANDILDYKDDDDKV

Chromatograms: https://cdn.origene.com/chromatograms/mk6623_f05.zip

Restriction Sites: SgfI-RsrII

Cloning Scheme:

Cloning sites used for ORF Shuttling:



* The last codon before the Stop codon of the ORF

ACCN: NM_207037

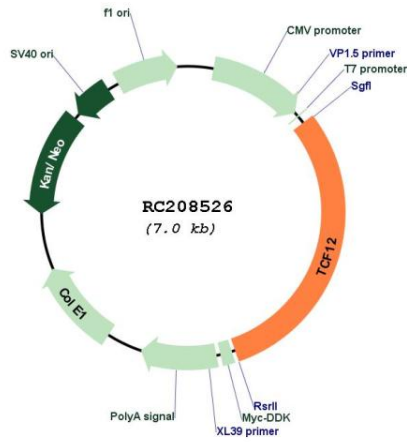
ORF Size: 2118 bp

OTI Disclaimer: The molecular sequence of this clone aligns with the gene accession number as a point of reference only. However, individual transcript sequences of the same gene can differ through naturally occurring variations (e.g. polymorphisms), each with its own valid existence. This clone is substantially in agreement with the reference, but a complete review of all prevailing variants is recommended prior to use. [More info](#)

OTI Annotation: This clone was engineered to express the complete ORF with an expression tag. Expression varies depending on the nature of the gene.

Components:	The ORF clone is ion-exchange column purified and shipped in a 2D barcoded Matrix tube containing 10ug of transfection-ready, dried plasmid DNA (reconstitute with 100 ul of water).
Reconstitution Method:	<ol style="list-style-type: none">1. Centrifuge at 5,000xg for 5min.2. Carefully open the tube and add 100ul of sterile water to dissolve the DNA.3. Close the tube and incubate for 10 minutes at room temperature.4. Briefly vortex the tube and then do a quick spin (less than 5000xg) to concentrate the liquid at the bottom.5. Store the suspended plasmid at -20°C. The DNA is stable for at least one year from date of shipping when stored at -20°C.
Note:	Plasmids are not sterile. For experiments where strict sterility is required, filtration with 0.22um filter is required.
RefSeq:	<u>NM_207037.1</u> , <u>NP_996920.1</u>
RefSeq Size:	4806 bp
RefSeq ORF:	2121 bp
Locus ID:	6938
UniProt ID:	<u>Q99081</u>
Cytogenetics:	15q21.3
Protein Families:	Druggable Genome, Transcription Factors
MW:	75.8 kDa
Gene Summary:	The protein encoded by this gene is a member of the basic helix-loop-helix (bHLH) E-protein family that recognizes the consensus binding site (E-box) CANNTG. This encoded protein is expressed in many tissues, among them skeletal muscle, thymus, B- and T-cells, and may participate in regulating lineage-specific gene expression through the formation of heterodimers with other bHLH E-proteins. Several alternatively spliced transcript variants of this gene have been described, but the full-length nature of some of these variants has not been determined. [provided by RefSeq, Jul 2008]

Product images:



Circular map for RC208526