

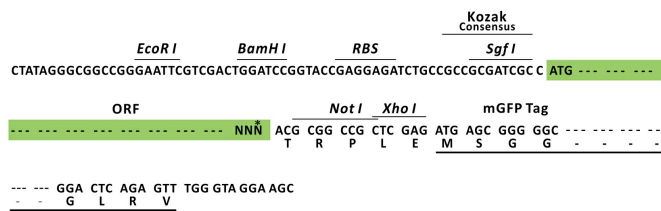
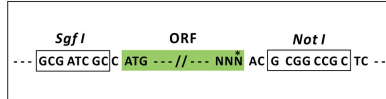
## Product datasheet for RC208524L4

### TOM1 (NM\_005488) Human Tagged Lenti ORF Clone

#### Product data:

Product Type: Expression Plasmids  
 Product Name: TOM1 (NM\_005488) Human Tagged Lenti ORF Clone  
 Tag: mGFP  
 Symbol: TOM1  
 Mammalian Cell Selection: Puromycin  
 Vector: pLenti-C-mGFP-P2A-Puro (PS100093)  
 E. coli Selection: Chloramphenicol (34 ug/mL)  
 ORF Nucleotide Sequence: The ORF insert of this clone is exactly the same as(RC208524).  
 Restriction Sites: SgfI-NotI  
 Cloning Scheme:

Cloning sites used for ORF Shuttling:



\* The last codon before the Stop codon of the ORF.

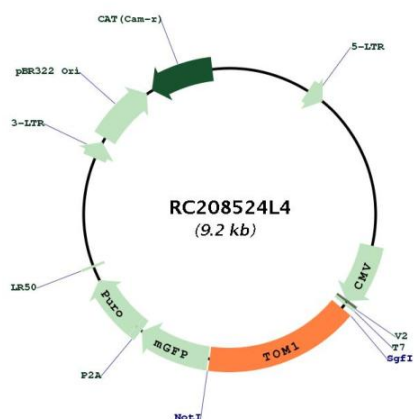
ACCN: NM\_005488  
 ORF Size: 1479 bp



[View online »](#)

<b>OTI Disclaimer:</b>	The molecular sequence of this clone aligns with the gene accession number as a point of reference only. However, individual transcript sequences of the same gene can differ through naturally occurring variations (e.g. polymorphisms), each with its own valid existence. This clone is substantially in agreement with the reference, but a complete review of all prevailing variants is recommended prior to use. <a href="#">More info</a>
<b>OTI Annotation:</b>	This clone was engineered to express the complete ORF with an expression tag. Expression varies depending on the nature of the gene.
<b>Components:</b>	The ORF clone is ion-exchange column purified and shipped in a 2D barcoded Matrix tube containing 10ug of transfection-ready, dried plasmid DNA (reconstitute with 100 ul of water).
<b>Reconstitution Method:</b>	<ol style="list-style-type: none"><li>1. Centrifuge at 5,000xg for 5min.</li><li>2. Carefully open the tube and add 100ul of sterile water to dissolve the DNA.</li><li>3. Close the tube and incubate for 10 minutes at room temperature.</li><li>4. Briefly vortex the tube and then do a quick spin (less than 5000xg) to concentrate the liquid at the bottom.</li><li>5. Store the suspended plasmid at -20°C. The DNA is stable for at least one year from date of shipping when stored at -20°C.</li></ol>
<b>RefSeq:</b>	<a href="#">NM_005488.1</a>
<b>RefSeq Size:</b>	2396 bp
<b>RefSeq ORF:</b>	1479 bp
<b>Locus ID:</b>	10043
<b>UniProt ID:</b>	<a href="#">O60784</a>
<b>Cytogenetics:</b>	22q12.3
<b>Domains:</b>	VHS, GAT
<b>Protein Families:</b>	Druggable Genome
<b>MW:</b>	53.9 kDa
<b>Gene Summary:</b>	This gene was identified as a target of the v-myb oncogene. The encoded protein shares its N-terminal domain in common with proteins associated with vesicular trafficking at the endosome. It is recruited to the endosomes by its interaction with endofin. Several alternatively spliced transcript variants encoding different isoforms have been found for this gene. [provided by RefSeq, Oct 2008]

Product images:



Circular map for RC208524L4