

Product datasheet for RC208511

FAM8A1 (NM_016255) Human Tagged ORF Clone

Product data:

Product Type:	Expression Plasmids
Product Name:	FAM8A1 (NM_016255) Human Tagged ORF Clone
Tag:	Myc-DDK
Symbol:	FAM8A1
Synonyms:	AHCP
Mammalian Cell Selection:	Neomycin
Vector:	pCMV6-Entry (PS100001)
E. coli Selection:	Kanamycin (25 ug/mL)
ORF Nucleotide Sequence:	>RC208511 representing NM_016255 Red=Cloning site Blue=ORF Green=Tags(s)

TTTTGTAATACGACTCACTATAGGGCGGCCGGAATTCGTCGACTGGATCCGGTACCGAGGAGATCTGCC
GCC**CGATCGC**C

ATGGCCGAGGGGCCGAGGAAGCCGAGGCCACCCTCCCGGCAGGACGATGGCGGAGGGGACCACGAGC
CCGTCCCTTCCCTGAGAGGCCCTCTACCACCGCCGTCATGCCCCCGGACGACCCCCAGGCCGAACC
CCAGGCCCGGGCCGCCACAGCCCCGGGCTCGCGGCTGCCGCCGAGCCGACAAATTGGAGCCGCC
CGCGAGCTCAGGAAGCGGGGAGGCGGCTCCGGCTCCGGTGCAGAGCTGCAGGAGCAGCGGGCTGCC
AGGCGCCGAAGCCGCGGCCACGAGAGAGACCAGCTCGGCTGAGCGCCGCGAGTACTCCCGCAAGT
GCACGAGTGGCTGTGGCAGTCTACTGCGGCTACCTCACCTGGCACAGCGGCTGGCCGCCTCCAGCC
TACTGCAGCCCCAGCCCTCCCCGAGAGCTTCCCTTCGGGCGGCGCTGCAGTCCCCAGCCGCGGCGC
CGCCGCCCGCAGCTGGGCTATTACAACCCCTTCTACTTCTGAGCCCCGGGGCCGCGGGGCTGACCC
GCGGACAGCTGCCGGCATCAGCACCCCTGCTCCAGTCGCGGGCTGGGACCCCGGCTCCTCACGTGCAG
GCGTCGGTCCGGGCCACTCCAGTGACGAGGGTAGGATCCGAGCCCTTCGCGAAGCCCGAGCGAGACC
GGCGACAGGCAGGCAGAGAATAATGTTATCCATCCTTGGCCACAGATTTATGGCAGAGATGGTGGATTT
CTTTATCTCTTTTATAAAAAGCAACCATTGTCTTAAGCATTATGCACCTCAGTGGGATAAAGGATATC
TCTAAGTTTGCATGCATTATATAATAGAAGAAATAGATGAAGACACATCAATGGAAGACTGCAGAAA
TGATGGTTGTGGCACTTATACAGATTATTAGTTTGTCTATGAGATAATTTGCATTTGGGGAGCAGG
TGGAGCTACCCAGGGAAGTTCTGCTGGGCTTCGAGTTGTGACATGTGATACATCAGTCTTATTGCA
CCAAGTCGGGTTTTAGTGATTCTTCTCAAATGTTAGCATTACAACGTCCACTATCCGAGCTTTGATCA
AGAATTTTCAATTGCTTCTTTTTCCCTGCTTTCATCAGCTGCTGTTTTTTCAGCATAATCGAACAGC
TTATGACATTGTAGCAGGAACCATTGTGGTAAAAAGAAATGGGGTCAGA

ACGCGTACGCGGCCGCTCGAGCAGAACTCATCTCAGAAGAGGATCTGGCAGCAAATGATATCCTGGATT
ACAAGGATGACGACGATAAGGTTTAA



Protein Sequence: >RC208511 representing NM_016255

Red=Cloning site Green=Tags(s)

MAEGPEEARHGPPGQDDGGGDHEPVPSLRGPPTTAVPCPRDDPQAEQPAPGRPTAPGLAAAAADKLEPP
 RELRKRGEAASGSGAELQEQAGCEAPEAAAPRERPARLSAREYSRQVHEWLWQSYCGYL TWHSGLAAFP
 YCSPQSPQSFPSGGAAVPQAAAPPPPQLGYYNPFYFLSPGAAGPDPRTAAGISTPAPVAGLGPRA
 ASVRATPVTRVGSAAAPSRSPSETGRQAGREYVIPS LAHRFMAEMVDFILFFIKATIVLSIMHLSG
 IKDI SKFAMHYIIEEIDEDTSMEDLQKMMVVALIYRLLVCFYEIICIWAGGATPGKFLLGLRVVTC
 DTSVLIA PSRVLVIPSSNVSITTSTIRALIKNFASIFFPAFITLLFFQHNR TAYDIVAGTIVV
 KRNGVR

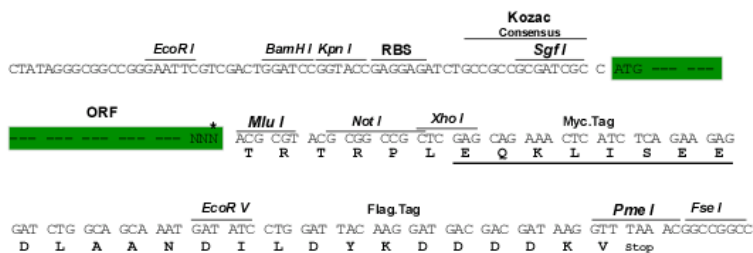
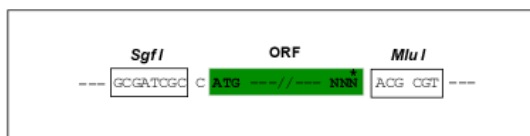
TRTRPLEQKLISEEDLAANDILDYKDDDDKV

Chromatograms: https://cdn.origene.com/chromatograms/mk8113_g09.zip

Restriction Sites: SgfI-MluI

Cloning Scheme:

Cloning sites used for ORF Shuttling:



* The last codon before the Stop codon of the ORF

ACCN: NM_016255

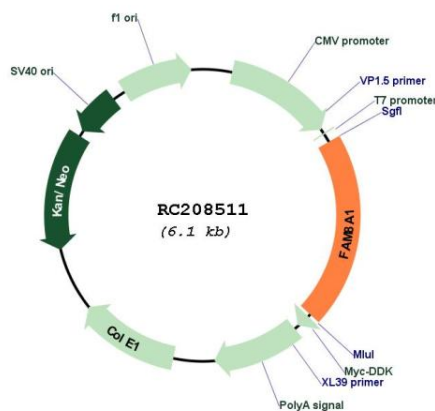
ORF Size: 1239 bp

OTI Disclaimer: Due to the inherent nature of this plasmid, standard methods to replicate additional amounts of DNA in E. coli are highly likely to result in mutations and/or rearrangements. Therefore, OriGene does not guarantee the capability to replicate this plasmid DNA. Additional amounts of DNA can be purchased from OriGene with batch-specific, full-sequence verification at a reduced cost. Please contact our customer care team at custsupport@origene.com or by calling 301.340.3188 option 3 for pricing and delivery.

The molecular sequence of this clone aligns with the gene accession number as a point of reference only. However, individual transcript sequences of the same gene can differ through naturally occurring variations (e.g. polymorphisms), each with its own valid existence. This clone is substantially in agreement with the reference, but a complete review of all prevailing variants is recommended prior to use. [More info](#)

OTI Annotation:	This clone was engineered to express the complete ORF with an expression tag. Expression varies depending on the nature of the gene.
Components:	The ORF clone is ion-exchange column purified and shipped in a 2D barcoded Matrix tube containing 10ug of transfection-ready, dried plasmid DNA (reconstitute with 100 ul of water).
Reconstitution Method:	<ol style="list-style-type: none">1. Centrifuge at 5,000xg for 5min.2. Carefully open the tube and add 100ul of sterile water to dissolve the DNA.3. Close the tube and incubate for 10 minutes at room temperature.4. Briefly vortex the tube and then do a quick spin (less than 5000xg) to concentrate the liquid at the bottom.5. Store the suspended plasmid at -20°C. The DNA is stable for at least one year from date of shipping when stored at -20°C.
RefSeq:	NM_016255.3
RefSeq Size:	4762 bp
RefSeq ORF:	1242 bp
Locus ID:	51439
UniProt ID:	Q9UBU6
Cytogenetics:	6p22.3
Protein Families:	Transmembrane
MW:	44.1 kDa
Gene Summary:	Plays a role in the assembly of the HRD1 complex, a complex involved in the ubiquitin-proteasome-dependent process of ER-associated degradation (ERAD).[UniProtKB/Swiss-Prot Function]

Product images:



Circular map for RC208511