

Product datasheet for RC208509

SLC14A1 (NM_015865) Human Tagged ORF Clone

Product data:

Product Type:	Expression Plasmids
Product Name:	SLC14A1 (NM_015865) Human Tagged ORF Clone
Tag:	Myc-DDK
Symbol:	SLC14A1
Synonyms:	HsT1341; HUT11; JK; Jk(b); RACH1; RACH2; UT-B1; UT1; UTE
Mammalian Cell Selection:	Neomycin
Vector:	pCMV6-Entry (PS100001)
E. coli Selection:	Kanamycin (25 ug/mL)
ORF Nucleotide Sequence:	>RC208509 ORF sequence Red=Cloning site Blue=ORF Green=Tags(s)

TTTTGTAATACGACTCACTATAGGGCGGCCGGAATTCGTCGACTGGATCCGGTACCGAGGAGATCTGCC
GCC**CGATCGCC**

ATGGAGGACAGCCCACTATGGTTAGAGTGACAGCCCACTATGGTTAGGGGTGAAAACCAGGTTTCGC
CATGTCAAGGGAGAAGGTGCTTCCCAAAGCTCTGGCTATGTCACCGGTGACATGAAAGAACTTGCCAA
CCAGCTTAAAGACAAACCCGTGGTGTCCAGTTCATTGACTGGATTCTCCGGGCATATCCCAAGTGGT
TTCGTCAACAACCCCGTCAGTGAATCCTGATTCTGGTAGGACTCTTGTTGAGAACCCCTGGTGGGCTC
TACTGGCTGGCTGGGAACAGTGGTCTCCACTCTGATGGCCCTCTGCTCAGCCAGGACAGGTCATTAAT
AGCATCTGGGCTCTATGGCTACAATGCCACCCTGGTGGGAGTACTCATGGCTGTCTTTTCGACAAGGGA
GACTATTTCTGGTGGCTGTTACTCCCTGTATGTGCTATGTCCATGACTTGCCCAATTTCTCAAGTGCAT
TGAATTCCTGGTCTCAGCAATGGGACCTCCCGCTTTCACCTCCCTTTCAACATGGCGTTGTCAATGTA
CCTTTCAGCCACAGGACATTACAATCCGTTCTTTCCAGCCAAACTGGTCAACCTATAACTACAGCTCCA
AATATCTCCTGGTCTGACCTCAGTGCCTGGAGTTGTTGAAATCTATACCAAGTGGGAGTTGGTCAGATCT
ATGGCTGTGATAATCCATGGACAGGGGGCATTTTCTGGGAGCCATCCTACTCTCCTCCCACTCATGTG
CCTGCATGCTGCCATAGGATCATTGCTGGGCATAGCAGCGGACTCAGTCTTTCAGCCCCATTTGAGAAC
ATCTACTTTGGACTCTGGGTTTCAACAGCTCTGACCCTGCAATGGGAGGAATGTTCAATGGGCGC
TCACCTGGCAAACCCACCTCTGGCTCTTGCTGTGCCCTGTTACGGCCTATCTTGAGTGGCATGGC
AAACTTTATGGCTGAGGTTGGATTGCCAGCTTGTACCTGGCCCTTCTGTTTGGCCACGCTATTGTTCTC
ATCATGACCACAAAAATTCCAACATCTACAAGATGCCCTCAGTAAAGTTACTTATCTGAAGAAAACC
GCATCTTACTACGCAAGCCAAGAAAAGAATGGTGGAAAGCCCTTTG

ACGCGTACGCGGCCGCTCGAGCAGAAACTCATCTCAGAAGAGGATCTGGCAGCAATGATATCTGGATT
ACAAGGATGACGACGATAAGGTTTAA



[View online >](#)

Protein Sequence: >RC208509 protein sequence
 Red=Cloning site Green=Tags(s)

MEDSPTMVRVDSPTMVRGENQVSPCQGRRCFPKALGYVTGDMKELANQLKDKPVVLQFIDWILRGISQVV
 FVNNPVSIGILILVGLLVQNPWWAL TGWLGTVVSTLMALLL SQDRSLIASGLYGYNATLVGVLMAVFSKDG
 DYFWLLLPVCAMSMTCPIFSSALNSVL SKWDLPVFTLPFNMALSMYLSATGHYNPFFPAKLVIPTTAP
 NISWSDL SALELLKSI PVGVGQI YGCDNPWTGGIFLGA ILLSSPLMCLHAAIGSLLGIAAGLSL SAFPEN
 IYFGLWGFNSSLACIAMGGMFMAL TWQTHLLALGCALFTAYLGVGMANFMAEVGLPACTWPFCLATLLFL
 IMTTKNSNIYKMPLSKVTYPEENRIFYLQAKKRMVESPL

TRTRPLEQKLISEEDLAANDILDYKDDDDKV

Chromatograms: https://cdn.origene.com/chromatograms/mk6147_e08.zip

Restriction Sites: SgfI-MluI

Cloning Scheme:



* The last codon before the Stop codon of the ORF

ACCN: NM_015865

ORF Size: 1167 bp

OTI Disclaimer: The molecular sequence of this clone aligns with the gene accession number as a point of reference only. However, individual transcript sequences of the same gene can differ through naturally occurring variations (e.g. polymorphisms), each with its own valid existence. This clone is substantially in agreement with the reference, but a complete review of all prevailing variants is recommended prior to use. [More info](#)

OTI Annotation: This clone was engineered to express the complete ORF with an expression tag. Expression varies depending on the nature of the gene.

Components: The ORF clone is ion-exchange column purified and shipped in a 2D barcoded Matrix tube containing 10ug of transfection-ready, dried plasmid DNA (reconstitute with 100 ul of water).

Reconstitution Method:

1. Centrifuge at 5,000xg for 5min.
2. Carefully open the tube and add 100ul of sterile water to dissolve the DNA.
3. Close the tube and incubate for 10 minutes at room temperature.
4. Briefly vortex the tube and then do a quick spin (less than 5000xg) to concentrate the liquid at the bottom.
5. Store the suspended plasmid at -20°C. The DNA is stable for at least one year from date of shipping when stored at -20°C.

RefSeq: [NM_015865.7](#)

RefSeq Size: 3971 bp

RefSeq ORF: 1170 bp

Locus ID: 6563

UniProt ID: [Q13336](#)

Cytogenetics: 18q12.3

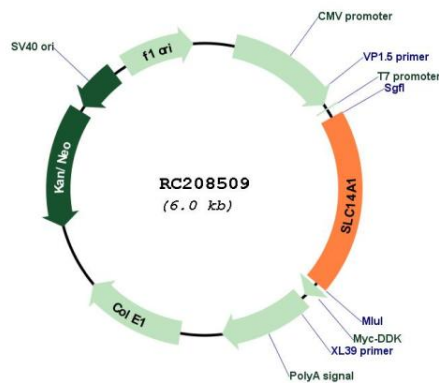
Domains: UT

Protein Families: Transmembrane

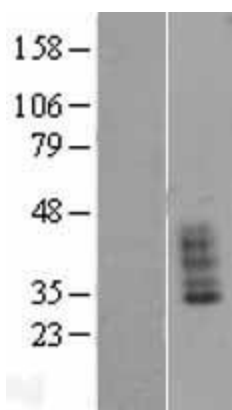
MW: 42.5 kDa

Gene Summary: The protein encoded by this gene is a membrane transporter that mediates urea transport in erythrocytes. This gene forms the basis for the Kidd blood group system. [provided by RefSeq, Mar 2009]

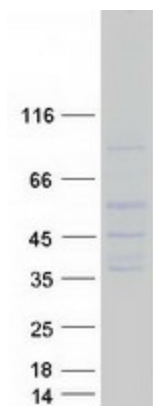
Product images:



Circular map for RC208509



Western blot validation of overexpression lysate (Cat# [LY431897]) using anti-DDK antibody (Cat# [TA50011-100]). Left: Cell lysates from untransfected HEK293T cells; Right: Cell lysates from HEK293T cells transfected with [RC228869] using transfection reagent MegaTran 2.0 (Cat# [TT210002]).



Coomassie blue staining of purified SLC14A1 protein (Cat# [TP308509]). The protein was produced from HEK293T cells transfected with SLC14A1 cDNA clone (Cat# RC208509) using MegaTran 2.0 (Cat# [TT210002]).