

Product datasheet for **RC208507**

NKRF (NM_017544) Human Tagged ORF Clone

Product data:

Product Type:	Expression Plasmids
Product Name:	NKRF (NM_017544) Human Tagged ORF Clone
Tag:	Myc-DDK
Symbol:	NKRF
Synonyms:	ITBA4; NRF
Mammalian Cell Selection:	Neomycin
Vector:	pCMV6-Entry (PS100001)
E. coli Selection:	Kanamycin (25 ug/mL)



[View online »](#)

**ORF Nucleotide
Sequence:**

>RC208507 ORF sequence
 Red=Cloning site Blue=ORF Green=Tags(s)

TTTTGTAATACGACTCACTATAGGGCGGCCGGAATTCGTCGACTGGATCCGGTACCGAGGAGATCTGCC
 GCC**CGGATCGCC**

ATGGAAAAATTCTCAAATGGCTGAAGGTATTGATATTGGGAGATGCCTTCATATGATCTGGTGTCTGT
 CCAAACCTTCAAAGGTCAAAAACGCCACTCTCAACATGTGATGGTCAAATCCTCCTAAAAAGCAAGC
 CGGTTCAAATTCATGCGAGACCTCGTTTTGAGCCTGTACATTTGTAGCTAGTAGTTCAAAAGATGAA
 AGACAGGAAGATCCTTATGGCCCTCAAACAAAAGAGGTAATGAACAAACACATTTTCCAGCATGCCAA
 GAGACATCTACCAAGATTATACTCAAGACTCTTCAGTATACAAGATGGGAATTCAGTATTGTGATTC
 ATCAGGATTCATTCTCACAAAAGACCAGCCTGTAACAGCCAACATGTATTTTACAGTGGGAACCTGCC
 CCAAGCACCACATCACAGCAGGCAAACCTCAGTCAACTCCTGAGCCTCACCATCACAGACATTTCCCG
 AGTCTGTGGTAGCCGAGAAGCAGTATTTTATTGAAAAATTAACGGCGACAATCTGGAAGAACCTTTCTAA
 TCCAGAAATGACTTCTGGATCTGATAAAATTAATTATACATATATGTTAACTCGTTGTATTCAGGCGTGT
 AAGACAAATCCTGAGTATATATGCTCCTTTAAAGGAAATTCCTCCTGCCGACATCCCCAAAAATAAAA
 AACTTCTAACTGATGGCTATGCTTGTGAAGTTAGATGCCAAAATATCTACTTAACTACAGGTTATGCTGG
 CAGCAAGAATGGGTCCAGGGATCGAGCTACAGAGCTAGCTGTAAAACCTTGCAGAAACGTATTGAAGTT
 AGAGTTGTCCGGCGGAAATTCAGCATAACATTTGGAGAGGACCTCGTGGTGTGTGAGATTGGCATGTCTCT
 CCTATGAATTTCTCCAGCTCTGAAGCCACCAGAAGACCTGGTGGTGTGGGTAAAGATGCTTCCGGGCA
 GCCAATTTTTAATGCTTCTGCCAAACACTGGACCAATTTTGTATTACAGAAAATGCAAAATGATGCAATT
 GGTATCCTTAACAATTCGCCTCATTCAACAAGATGTCAATTGAATACAAATATGAGATGATGCCAAATC
 GCACATGGCGTTGTGAGTGTTTTTACAAGATCACTGCTTAGCTGAAGGTTATGGAACCAAGAAAACAAG
 TAAACATGCAGCTGCCGACGAGGCTTTGAAAAATCTTCAAAAAACACAGCCCACTTATCCATCTGTCAAA
 AGTTCACAATGCCATACAGGCTTTCACCCAGAGGATCTGGAAAGAAGAAAGATATAAAGGATCTTGATG
 TTTATGAGAAATCTTCAAATCCCGTGTGCACGCTGAACGACACAGCTCAGTTTAAACCGAATGACAGTTGA
 GTATGTCTATGAAAGGATGACAGGCCTCCGCTGGAAATGCAAAGTGATTCTAGAGAGTGAAGTAATTGCA
 GAAGCAGTTGGGTGAAGAAAACGTCAAATATGAAGTGTGGGGAAGCTGTGAAAACCTCAAAAAGA
 CCCAGCCAACGTCAATTAACAACCTGAAGAAAGGAGCTGTTGAAGATGTGATTTCAAGAAATGAAATTCA
 GGGCCGCTCAGCAGAGGAGGCTTACAAACAGCAAATCAAAGAAGATAATATTGAAATCAGCTGCTGAGA
 AAGATGGGTTGGACTGGTGGTGGTTTAGGTAATCTGGTGAGGGCATAACGGGAGCCTATCTCAGTAAAAG
 AGCAGCATAAGCGGGAAGGGCTTGGTCTGGATGTAGAGAGGGTGAATAAAATGCCAAGAGAGATATTGA
 ACAGATCATCAGAAACTACGCCCGCTCCGAGAGCCACACAGATTTGACTTCTCTAGAGAGCTGACTAAT
 GATGAACGGAAGCAAATACATCAGATTGCCAGAAGTATGGTCTTAAGAGTAAGTCTCATGGGGTGGGCC
 ATGATAGGTACCTAGTGGTAGGTAGAAAAGACGGAAGGAAGACCTACTAGATCAGCTCAAACAGGAAGG
 CCAAGTGGGCCATTACGAGCTTGTATGCCTCAAGCAAAT

ACGCGTACGCGGCCGCTCGAGCAGAAACTCATCTCAGAAGAGGATCTGGCAGCAAATGATATCCTGGATT
 ACAAGGATGACGACGATAAGGTTTAA

Protein Sequence: >RC208507 protein sequence
 Red=Cloning site Green=Tags(s)

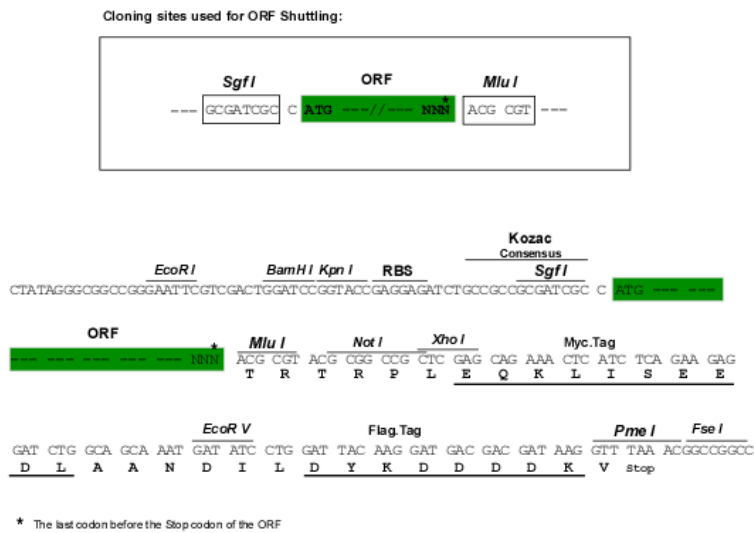
```
MEKILQMAEGIDIGEMPSYDLVLSKPSKGQKRHLSTCDGQNPCKQAGSKFHARPRFEPVHFVASSSKDE
RQEDPYGPQTKEVNEQTHFASMPRDIYQDYTDQSF SIQDGN SQYCDSSGFI LTKDQPV TANMYFDSGNPA
PSTTSQQANSQSTPEPSPSQTFPE SVVAEKQYF IEKLTATIWKNL SNPEMTSGSDKIN YTYMLTRCIQAC
KTNPEYIYAPLKEIPPADIPKNKLLTDGYACEVRCQNIYLTTGYAGSKNGSRDRATELAVKLLQKRIEV
RVVRRKFKHTFGEDLVVCQIGMSSYEFPPALKPPEDLVVLGKDASGQPIFNASAKHWTNFVITENANDAI
GILNNSASFNKMSIEYKYEMMPNRTWRCRVFLQDHCLAEGYGTKKT SKHAAADEALKILQKTQPTYPSVK
SSQCHTGS SPRSGKKKDIKDLVYENSSNPVCTLNDAQFNRM TVEYVYERMTGLRWKCKVILESEVIA
EAVGVKTKV KYEAAGEAVKTLKKTQPTVINLKKGAVEDVISRNEIQGRSAEEAYKQ QIKEDNIGNQLLR
KMGWTGGGLGKSGEGIREPISVKEQHKREGLDVERVNKIAKRDI EQIRNYARSESHTDLTFSREL TN
DERKQIHQIAQKYGLKSKSHGVGHDRYL VVGRKRRKEDLLDQLKQEGQVGHYEL VMPQAN
```

TRTRPLEQKLISEEDLAANDILDYKDDDDKV

Chromatograms: https://cdn.origene.com/chromatograms/mk6155_e08.zip

Restriction Sites: SgfI-MluI

Cloning Scheme:



ACCN: NM_017544

ORF Size: 2070 bp

OTI Disclaimer: Due to the inherent nature of this plasmid, standard methods to replicate additional amounts of DNA in E. coli are highly likely to result in mutations and/or rearrangements. Therefore, OriGene does not guarantee the capability to replicate this plasmid DNA. Additional amounts of DNA can be purchased from OriGene with batch-specific, full-sequence verification at a reduced cost. Please contact our customer care team at custsupport@origene.com or by calling 301.340.3188 option 3 for pricing and delivery.

The molecular sequence of this clone aligns with the gene accession number as a point of reference only. However, individual transcript sequences of the same gene can differ through naturally occurring variations (e.g. polymorphisms), each with its own valid existence. This clone is substantially in agreement with the reference, but a complete review of all prevailing variants is recommended prior to use. [More info](#)

OTI Annotation: This clone was engineered to express the complete ORF with an expression tag. Expression varies depending on the nature of the gene.

Components: The ORF clone is ion-exchange column purified and shipped in a 2D barcoded Matrix tube containing 10ug of transfection-ready, dried plasmid DNA (reconstitute with 100 ul of water).

Reconstitution Method:

1. Centrifuge at 5,000xg for 5min.
2. Carefully open the tube and add 100ul of sterile water to dissolve the DNA.
3. Close the tube and incubate for 10 minutes at room temperature.
4. Briefly vortex the tube and then do a quick spin (less than 5000xg) to concentrate the liquid at the bottom.
5. Store the suspended plasmid at -20°C. The DNA is stable for at least one year from date of shipping when stored at -20°C.

Note: Plasmids are not sterile. For experiments where strict sterility is required, filtration with 0.22um filter is required.

RefSeq: [NM_017544.4](#)

RefSeq Size: 3263 bp

RefSeq ORF: 2355 bp

Locus ID: 55922

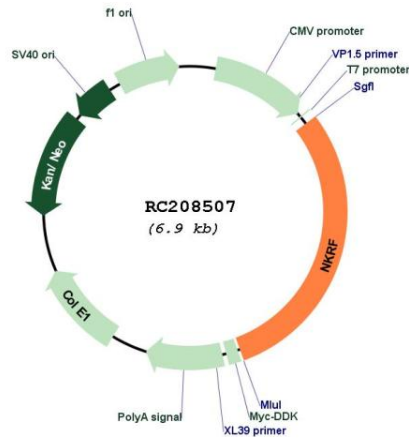
UniProt ID: [O15226](#)

Cytogenetics: Xq24

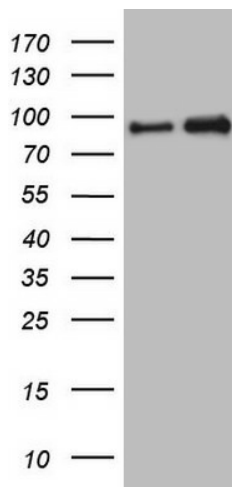
Protein Families: Transcription Factors

MW: 77.7 kDa

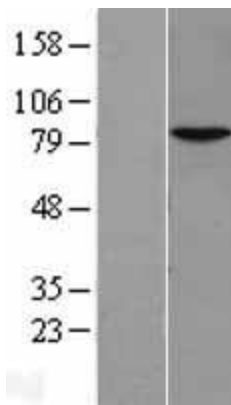
Gene Summary: This gene encodes a transcriptional repressor that interacts with specific negative regulatory elements to mediate transcriptional repression of certain nuclear factor kappa B responsive genes. The protein localizes predominantly to the nucleolus with a small fraction found in the nucleoplasm and cytoplasm. Alternate splicing results in multiple transcript variants. [provided by RefSeq, Mar 2010]

Product images:


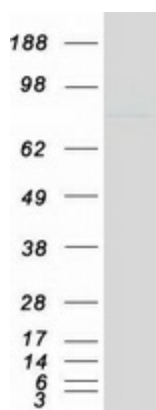
Circular map for RC208507



HEK293T cells were transfected with the pCMV6-ENTRY control (Cat# [PS100001], Left lane) or pCMV6-ENTRY NKRF (Cat# RC208507, Right lane) cDNA for 48 hrs and lysed. Equivalent amounts of cell lysates (5 ug per lane) were separated by SDS-PAGE and immunoblotted with anti-NKRF (Cat# [TA806097]). Positive lysates [LY402598] (100ug) and [LC402598] (20ug) can be purchased separately from OriGene.



Western blot validation of overexpression lysate (Cat# [LY402598]) using anti-DDK antibody (Cat# [TA50011-100]). Left: Cell lysates from untransfected HEK293T cells; Right: Cell lysates from HEK293T cells transfected with RC208507 using transfection reagent MegaTran 2.0 (Cat# [TT210002]).



Coomassie blue staining of purified NKRF protein (Cat# [TP308507]). The protein was produced from HEK293T cells transfected with NKRF cDNA clone (Cat# RC208507) using MegaTran 2.0 (Cat# [TT210002]).