

## Product datasheet for **RC208505**

### **UBOX5 (NM\_199415) Human Tagged ORF Clone**

#### **Product data:**

Product Type:	Expression Plasmids
Product Name:	UBOX5 (NM_199415) Human Tagged ORF Clone
Tag:	Myc-DDK
Symbol:	UBOX5
Synonyms:	hUIP5; RNF37; UBCE7IP5; UIP5
Vector:	pCMV6-Entry (PS100001)
E. coli Selection:	Kanamycin (25 ug/mL)
Cell Selection:	Neomycin



[View online »](#)

**ORF Nucleotide Sequence:**

>RC208505 representing NM\_199415  
 Red=Cloning site Blue=ORF Green=Tags(s)

TTTTGTAATACGACTCACTATAGGGCGGCCGGAATTCGTCGACTGGATCCGGTACCGAGGAGATCTGCC  
 GCC**CGCATCGCC**

ATGGTAATAAATCTTTGCCTCCACAGTTCAGACCAAGAATTCACTGCAACAAGATATCAGCTGATGGTT  
 ACGAAGTAGAAAATCTCATCTCTGAAGATCTCACAAAGAGAAGTCATGGTTTCAGACAGAGTATTCAT  
 TAAGCCACCAGTCTATGTGACAGTTTCATTTCCCTTTAATGTGGAAATCTGTAGGATCAACATAGACCTC  
 ACAGCTGGGGGAGGTGAGAACGTCAGTGGCCTGGAAATGTACACATCTGCCTCATCTAGCAGAGTGTCTT  
 GGAATACGCCAGTCCCGGACCCTGGGCCAGCTGAGCCATCTGTCCAGACAAGGAGGCGTTCACCTT  
 GGTAGGCAAAGTCTTACTGAAAAACCAGAGCCAAGTGGTGTAGCCACAGGGGCTTCAAGGCCAGGCC  
 CCTTTTGGCGGATGGAAGCCACTCCCTCCCTGCTGTTGTGGCCAGGAGCTCTGGAATAAAGGGG  
 CTCTTTCCCTTAGCCACGTGGCCACTTAAGGATCTGTATCACCCATGTGACAGGCGCGGTATCCCTTG  
 TATCAAGCGGTTGGAAGTGTGGGTGAGCCGCAAGACCTGCTCCAGGAAGTATAGACAGCATCCTG  
 CTGGTACCTCAGAGAACCTGCCTCAGGATGTGGCTCTGCAAGGCTCCAGCCTTGCCCATGGAAGTGACT  
 GTGACCCTGGGGACCAGCCTGAGAGCCAGCAGGCTCCCTCCAGCCTGCAGAAGCTGGCCGAGATCATTCA  
 GGATGTGCTGAGGAGTTCCTGGATCCCATCACCTGGAGATCATGCCTGTCCCATGCTGCTGCCCTCA  
 GGCAAGGTCATCGACCAGAGCAGTGGAGAAGTGAACCGCAGTGAAGCCACATGGGGCCGAGTGCCCA  
 GTGACCCTTTACGGGGTAGCTTTTACTCCGCACTCTCAGCCCTGCCTCACCCCTCCCTCAAGGCCCG  
 GATTGACATTTCTGCTCCAGCACTCCATCCCTGGCTGCCACCTGCTTGGGAGAGCACAGACGGCATTG  
 GCAGTGTCCCTTCTCCATTGTTCTGCCCTCAGAAAAGGAAGATAGAGCAGGCTGAACATGTCCCAG  
 ACAGTAACTTTGGTGTAAATGCTTCTCTGTTTTTCTGCCACAAGCCCTTTGGTCTTACCCACTACATCAGA  
 GCACACTGCTAAGAAAATGAAAGCCACCAATGAGCCAGCCTGACACATATGGACTGCTCGACAGAGCAG  
 CCTGGGAGCATCCTGGGCCCAATGTGCTCCTGCAAAAAGAGTATTTTCTCCCTACTTCAAAAAGGAGC  
 CGGTGTACCAGCTGCCCTGCGGCCACCTCCTGTGCCGACCCTGCCTGGGTGAGAAGCAACGCTCCCTGCC  
 CATGACGTGCACAGCCTGCCAGCGCGGTTGCTAGCCAAGAGCTGCTGCGGGTCCACTTC

**ACGCGT**ACGCGGCCGCTCGAGCAGAAACTCATCTCAGAAGAGGATCTGGCAGCAAATGATATCCTGGATT  
 ACAAGGATGACGACGATAAGGTTTAA

**Protein Sequence:**

>RC208505 representing NM\_199415  
 Red=Cloning site Green=Tags(s)

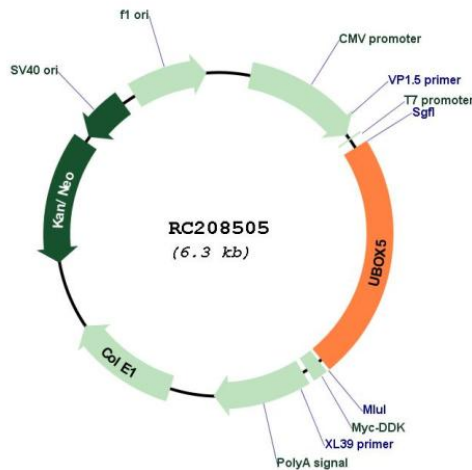
MVINLCLPQFRPRIHCNKISADGYEVENLISEDLTRKSHGFRTEYFIKPPVYVTVSFPFNVEICRINIDL  
 TAGGGQNVTLGEMYTSASSSRVSWNTPQCRTLGAPEVSPDKEAFTLVGKVLKLNQSQVVFSHRFGKARP  
 PFGAMEATLPSPAVVAQELWNKGALSLSHVAHLRITHTVTGGGIPCIKRLVWQPAKTCSEQEVIDSIL  
 LVTSENLPQDVALQAPALPMESDCDPGDQPESQQAPSSLQKLAETIQDVPEEFLDPITLIMPCLMPS  
 GKVIDQSTLEKCNRSEATWGRVPSDPFTGVAFTPHSQPLPHPSLKRIDHFLQHSIPGCHLLGRAQTAL  
 AVIPSSIVLPSQKRKIEQAEHVPDSNFGVNASCFSATSPVLVPTTSEHTAKMKATNEPSLTHMDCSTEQ  
 PGSILGPECASCKRVFSPYFKKEPVYQLPCGHLLCRPCLGEKQRLPMTCTACQRPVASQDVLRVHF

**TRTRPLEQKLI**SEEDLAANDILDYKDDDDKV

**Restriction Sites:**

SgfI-MluI

**Cloning Scheme:**

**Plasmid Map:**

**ACCN:**

NM\_199415

**ORF Size:**

1461 bp

**OTI Disclaimer:**

The molecular sequence of this clone aligns with the gene accession number as a point of reference only. However, individual transcript sequences of the same gene can differ through naturally occurring variations (e.g. polymorphisms), each with its own valid existence. This clone is substantially in agreement with the reference, but a complete review of all prevailing variants is recommended prior to use. [More info](#)

**OTI Annotation:**

This clone was engineered to express the complete ORF with an expression tag. Expression varies depending on the nature of the gene.

**Components:**

The ORF clone is ion-exchange column purified and shipped in a 2D barcoded Matrix tube containing 10ug of transfection-ready, dried plasmid DNA (reconstitute with 100 ul of water).

**Reconstitution Method:**

1. Centrifuge at 5,000xg for 5min.
2. Carefully open the tube and add 100ul of sterile water to dissolve the DNA.
3. Close the tube and incubate for 10 minutes at room temperature.
4. Briefly vortex the tube and then do a quick spin (less than 5000xg) to concentrate the liquid at the bottom.
5. Store the suspended plasmid at -20°C. The DNA is stable for at least one year from date of shipping when stored at -20°C.

**RefSeq:** [NM\\_199415.3](#)

**RefSeq Size:** 4184 bp

**RefSeq ORF:** 1464 bp

**Locus ID:** 22888

**UniProt ID:** [O94941](#)

**Cytogenetics:** 20p13

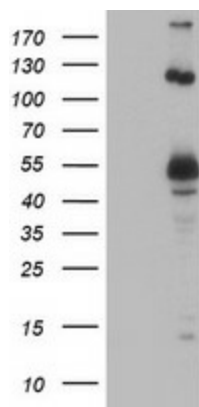
**Protein Families:** Druggable Genome

**Protein Pathways:** Ubiquitin mediated proteolysis

**MW:** 53.1 kDa

**Gene Summary:** This gene encodes a U-box domain containing protein. The encoded protein interacts with E2 enzymes and may play a role in the ubiquitination pathway. Alternate splicing results in multiple transcript variants. [provided by RefSeq, Jun 2012]

### Product images:



HEK293T cells were transfected with the pCMV6-ENTRY control (Cat# [PS100001], Left lane) or pCMV6-ENTRY UBOX5 (Cat# RC208505, Right lane) cDNA for 48 hrs and lysed. Equivalent amounts of cell lysates (5 ug per lane) were separated by SDS-PAGE and immunoblotted with anti-UBOX5(Cat# [TA503340]).