

## Product datasheet for **RC208498**

### EBI3 (NM\_005755) Human Tagged ORF Clone

#### Product data:

Product Type:	Expression Plasmids
Product Name:	EBI3 (NM_005755) Human Tagged ORF Clone
Tag:	Myc-DDK
Symbol:	EBI3
Synonyms:	IL-27B; IL27B; IL35B
Mammalian Cell Selection:	Neomycin
Vector:	pCMV6-Entry (PS100001)
E. coli Selection:	Kanamycin (25 ug/mL)
ORF Nucleotide Sequence:	>RC208498 ORF sequence Red=Cloning site Blue=ORF Green=Tags(s)

TTTTGTAATACGACTCACTATAGGGCGGCCGGAATTCGTCGACTGGATCCGGTACCGAGGAGATCTGCC  
GCC**CGATCGCC**

ATGACCCCGCAGCTTCTCCTGGCCCTTGTCTCTGGGCCAGCTGCCCGCCCTGCAGTGGAAGGAAAGGGC  
CCCCAGCAGCTCTGACACTGCCCGGGTGCAATGCCGAGCCTCTCGGTACCCGATCGCCGTGGATTGCTC  
CTGGACCCTGCCGCTGCTCCAACTCCACCAGCCCCGTGTCCTTATTGCCACGTACAGGCTCGGCATG  
GCTGCCCGGGGCCACAGCTGGCCCTGCCTGCAGCAGACGCCAACGTCCACCAGCTGCACCATCACGGATG  
TCCAGTGTTCTCCATGGCTCCCTACGTGCTCAATGTACCGCCGTCCACCCCTGGGGCTCCAGCAGCAG  
CTTCGTGCCTTTTCATAACAGAGCACATCATCAAGCCCGACCCTCCAGAAGGCGTGCGCCTAAGCCCCCTC  
GCTGAGCGCCAGCTACAGGTGCAGTGGGAGCCTCCCGGGTCTGGCCCTCCAGAGATCTTCTCACTGA  
AGTACTGGATCCGTTACAAGCGTCAGGGAGCTGCGCGCTTCCACCGGTGGGGCCATTGAAGCCACGTC  
CTTCATCCTCAGGGCTGTGCGGCCCGAGCCAGGTAACGTCCTCAAGTGGCGGCTCAGGACCTCACAGAC  
TACGGGAACTGAGTGACTGGAGTCTCCCGCCACTGCCACAATGAGCCTGGGCAAG

**ACGCGT**ACGCGGGCCGCTCGAGCAGAACTCATCTCAGAAGAGGATCTGGCAGCAAATGATATCCTGGATT  
ACAAGGATGACGACGATAAGGTTTAA



[View online »](#)

**Protein Sequence:** >RC208498 protein sequence  
Red=Cloning site Green=Tags(s)

MTPQLLLALVLWASCPPCSGRKGPPAALTLPRVQCRASRYPIAVDCSWTLPPAPNSTSPVSFIATYRLGM  
 AARGHSWPCLQQTPTSTCTITDVQLFSMAPYVLNVTAVHPWGSSSFVPFITEHIKPDPEGVRLSPL  
 AERQLQVQWEPGSPWFPEIFSLKYWIRYKRQGAARFHRVGP IEATSFILRAVRPRARYVQVAAQDLTD  
 YGELSDWSLPATATMSL GK

TRTRPLEQKLISEEDLAANDILDYKDDDDKV

**Chromatograms:** [https://cdn.origene.com/chromatograms/mk6091\\_a05.zip](https://cdn.origene.com/chromatograms/mk6091_a05.zip)

**Restriction Sites:** SgfI-MluI

**Cloning Scheme:**

Cloning sites used for ORF Shuttling:



\* The last codon before the Stop codon of the ORF

**ACCN:** NM\_005755

**ORF Size:** 687 bp

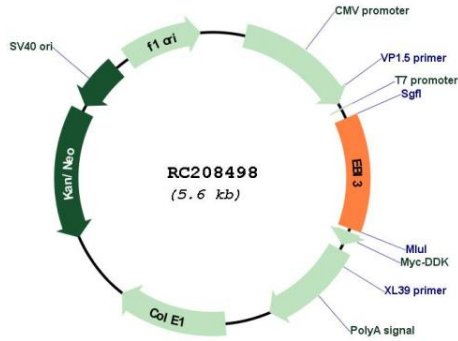
**OTI Disclaimer:** Due to the inherent nature of this plasmid, standard methods to replicate additional amounts of DNA in E. coli are highly likely to result in mutations and/or rearrangements. Therefore, OriGene does not guarantee the capability to replicate this plasmid DNA. Additional amounts of DNA can be purchased from OriGene with batch-specific, full-sequence verification at a reduced cost. Please contact our customer care team at [custsupport@origene.com](mailto:custsupport@origene.com) or by calling 301.340.3188 option 3 for pricing and delivery.

The molecular sequence of this clone aligns with the gene accession number as a point of reference only. However, individual transcript sequences of the same gene can differ through naturally occurring variations (e.g. polymorphisms), each with its own valid existence. This clone is substantially in agreement with the reference, but a complete review of all prevailing variants is recommended prior to use. [More info](#)

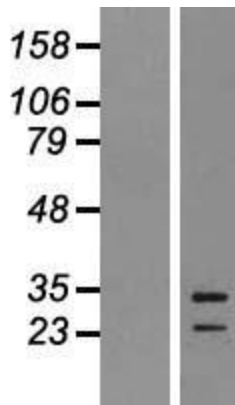
**OTI Annotation:** This clone was engineered to express the complete ORF with an expression tag. Expression varies depending on the nature of the gene.

<b>Components:</b>	The ORF clone is ion-exchange column purified and shipped in a 2D barcoded Matrix tube containing 10ug of transfection-ready, dried plasmid DNA (reconstitute with 100 ul of water).
<b>Reconstitution Method:</b>	<ol style="list-style-type: none"><li>1. Centrifuge at 5,000xg for 5min.</li><li>2. Carefully open the tube and add 100ul of sterile water to dissolve the DNA.</li><li>3. Close the tube and incubate for 10 minutes at room temperature.</li><li>4. Briefly vortex the tube and then do a quick spin (less than 5000xg) to concentrate the liquid at the bottom.</li><li>5. Store the suspended plasmid at -20°C. The DNA is stable for at least one year from date of shipping when stored at -20°C.</li></ol>
<b>Note:</b>	Plasmids are not sterile. For experiments where strict sterility is required, filtration with 0.22um filter is required.
<b>RefSeq:</b>	<a href="#">NM_005755.3</a>
<b>RefSeq Size:</b>	1149 bp
<b>RefSeq ORF:</b>	690 bp
<b>Locus ID:</b>	10148
<b>UniProt ID:</b>	<a href="#">Q14213</a>
<b>Cytogenetics:</b>	19p13.3
<b>Domains:</b>	FN3
<b>Protein Families:</b>	Druggable Genome, Secreted Protein
<b>MW:</b>	25.4 kDa
<b>Gene Summary:</b>	This gene was identified by its induced expression in B lymphocytes in response Epstein-Barr virus infection. It encodes a secreted glycoprotein belonging to the hematopoietin receptor family, and heterodimerizes with a 28 kDa protein to form interleukin 27 (IL-27). IL-27 regulates T cell and inflammatory responses, in part by activating the Jak/STAT pathway of CD4+ T cells. [provided by RefSeq, Sep 2008]

Product images:



Circular map for RC208498



Western blot validation of overexpression lysate (Cat# [LY417095]) using anti-DDK antibody (Cat# [TA50011-100]). Left: Cell lysates from untransfected HEK293T cells; Right: Cell lysates from HEK293T cells transfected with RC208498 using transfection reagent MegaTran 2.0 (Cat# [TT210002]).